

Converting Colors

`RYB(255, 177, 142)`

Have a look what the booklet for
RYB(255, 177, 142) contains.

RYB(255, 177, 142)	3
<i>Conversions</i>	4
<i>Details</i>	6
<i>Harmonies</i>	11
<i>Previews</i>	23
<i>Color Blindness Simulation</i>	26
<i>CSS Examples</i>	29

Color

R_YB(255, 177, 142)

Conversions

Conversions Part 1

Format	Color
Hex	FFA98E
RGB	255, 169, 142
RGB Percent	100%, 66%, 56%
CMY	0.0000, 0.3383, 0.4431
CMYK	0.00, 0.34, 0.44, 0.00
HSL	14°, 100%, 78%
HSV	14°, 44%, 100%
XYZ	60.2590, 51.4860, 32.3530
YIQ	191.6360, 59.9230, 9.8350

Conversions

Conversions Part 2

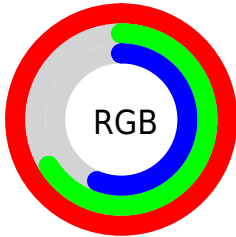
Format	Color
R _Y B	255, 177, 142
Decimal	16755086
CIE Lab	76.97, 28.79, 26.84
CIE LCh	77, 39.360, 42.990
Yxy	51.4860, 0.4182, 0.3573
Android (android.graphics.Color)	4294945166 (0xFFFFA98E)
YUV	191.6360, -24.4705, 55.5702
Hunter-Lab	71.7537, 24.3358, 23.4944

Details

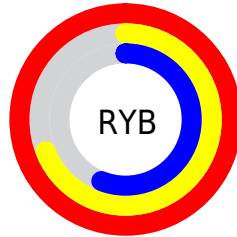
The RYB color **255, 177, 142** is a light color, and the websafe version is hex **FF9999**. A complement of this color would be **142, 191, 255**, and the grayscale version is **192, 192, 192**.

A 20% lighter version of the original color is **255, 253, 196**, and **195, 123, 92** is the 20% darker color. If you saturate the color by 10%, you get **255, 159, 117**, and if you desaturate by 10%, it is **255, 194, 168**.

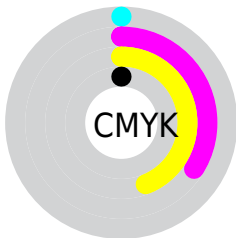
Distribution



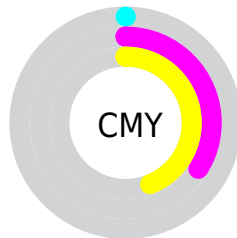
- Red (100%)
- Green (66%)
- Blue (56%)



- Red (100%)
- Yellow (69%)
- Blue (56%)



- Cyan (0%)
- Magenta (34%)
- Yellow (44%)
- Black (0%)



- Cyan (0%)
- Magenta (34%)
- Yellow (44%)

Brightness & Saturation Gradients


These gradients show how the RYB color 255, 177, 142 changes by changing the brightness by 10 percent. The first figure shows a shift by +10% for each color and the second figure -10%.

Similar to the brightness gradients but the following saturation gradients show a change of the RYB color 255, 177, 142 by changing the saturation by 10% instead.

 255, 177, 142

 255, 177, 142

255, 255, 255

 225, 150, 116

 255, 249, 196

 195, 123, 92

 226, 255, 224

 166, 98, 68

253, 255, 253

 138, 72, 45

 110, 48, 24

 83, 25, 0

 56, 0, 0

 29, 0, 1

 0, 0, 0

■ 255, 177, 142

■ 255, 177, 142

■ 255, 159, 117

■ 255, 194, 168

■ 255, 142, 91

■ 255, 213, 193

■ 255, 123, 66

■ 255, 229, 219

■ 255, 107, 40

■ 255, 248, 244

■ 255, 88, 15

255, 255, 255

■ 255, 78, 0

Harmonies

Analogous

The Analogous color harmony consists of three colors that are next to each other on the color wheel.



255, 162, 175



255, 177, 142



215, 232, 121

Triad

The Triadic color harmony groups three colors that are evenly spaced from another and form a triangle on the color wheel.



255, 177, 142



113, 173, 208



164, 183, 255

Complementary

The Complementary color scheme is a pair of colors which are on the opposite of each other on the color wheel.



255, 177, 142



142, 191, 255

Split Complementary

Split-complementary colors differ from the complementary color scheme. The scheme consists of three colors, the original color and two neighbors of the complement color.



103, 162, 255



255, 177, 142



65, 139, 210

Square

The Square scheme is like the rectangle color scheme, but the four colors are evenly spaced on the color wheel.



255, 177, 142



136, 202, 180



50, 136, 239



215, 175, 244

Rectangle

The Rectangle color scheme consists of four colors that form a rectangle on the color wheel.



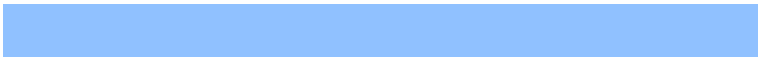
255, 177, 142



146, 211, 117



50, 136, 239



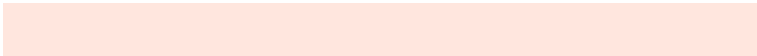
144, 178, 255

Sweetspot

The Sweet Spot groups the original color and five complimentary colors.



255, 177, 142



255, 233, 222



255, 142, 229



128, 114, 107



0, 0, 0



128, 128, 128

Same Dimension

The Same Dimension uses a secret algorithm to generate beautiful new colors.



255, 177, 142



255, 162, 120



183, 255, 142



128, 119, 115



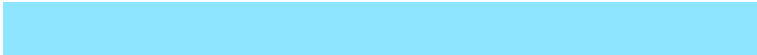
191, 59, 0



64, 20, 0

Inverse Universe

The Inverse Universe completely reimagines the original color for something new.



142, 191, 255



120, 178, 255



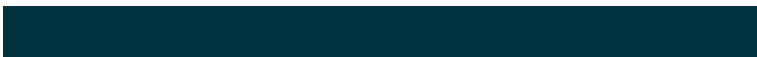
142, 166, 255



115, 120, 128



0, 83, 191



0, 28, 64

Previews

White Background



This preview shows how the RYB color 255, 177, 142 looks on a white background.

Color Contrast Check

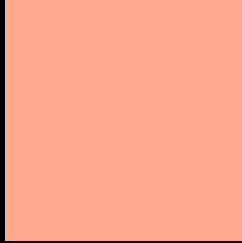
Large Text (above 18pt) WCAG AA × Fail

Any Text WCAG AA × Fail

Large Text (above 18pt) WCAG AAA × Fail

Any Text WCAG AAA × Fail

Black Background



This preview shows how the RYB color 255, 177, 142 looks on a black background.

Color Contrast Check

Large Text (above 18pt) WCAG AA ✓ Pass

Any Text WCAG AA ✓ Pass

Large Text (above 18pt) WCAG AAA ✓ Pass

Any Text WCAG AAA ✓ Pass

If you want to check with other color combinations, try the [Color Contrast Checker](#).

RYB 255, 177, 142 Background



This preview shows how black text looks on a background with the RYB color 255, 177, 142.



This preview shows how white text looks on a background with the RYB color 255, 177, 142.

Color Blindness Simulation

Color vision deficiency is a very complex topic, and I could not describe the different causes any better than Wikipedia does, so if you want to learn more, you should check out their [article about color blindness](#).


Dichromacy



Original Color
255, 177, 142

Protanopia
168, 202, 152

Deuteranopia
225, 225, 139



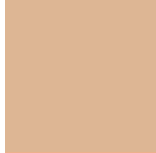
Tritanopia
255, 165, 177

Trichromacy



Original Color

255, 177, 142



Protanomaly

221, 212, 148



Deuteranomaly

236, 200, 140



Tritanomaly

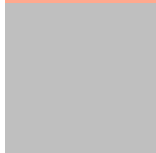
255, 166, 164

Monochromacy



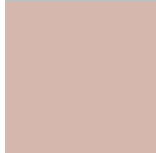
Original Color

255, 177, 142



Achromatopsia

191, 191, 191



Achromatomaly

214, 186, 173

CSS Examples

Text

The CSS property to change the color of the text to RYB 255, 177, 142 is called "color". The color property can be set on classes, ids or directly on the HTML element.

This example shows how text in the color rgb(255, 169, 142) looks like.

```
.text, #text, p{  
    color:rgb(255, 169, 142)  
}
```

If you want to add a text shadow in that color use the text-shadow property, you can generate a text shadow directly with our [CSS Text Shadow Generator](#).

Here you see how black text with a 4 pixel rgb(255, 169, 142) colored shadow looks like.

```
.shadow{ text-shadow: 4px 4px 2px rgb(255, 169, 142) }
```

Border

The CSS property to change the border of an element to RYB 255, 177, 142 is called "border". The border property can be set on classes, ids or directly on the HTML element.

This example shows the color as border, it can be applied via the CSS property "border" or "border-color".

```
.border, #border, table{ border:4px solid rgb(255, 169, 142) }
```

If only the border color should be changed use the property `border-color`.

```
.border{ border-color:rgb(255, 169, 142) }
```

If you want to add a box shadow in that color use:

Here you see how a box with a 4 pixel `rgb(255, 169, 142)` colored shadow looks like.

```
.boxshadow{ -moz-box-shadow:4px 4px 4px  
4px rgb(255, 169, 142); -webkit-box-  
shadow:4px 4px 4px 4px rgb(255, 169, 142);  
box-shadow:4px 4px 4px 4px rgb(255, 169,  
142) }
```

Background

The CSS property to change the background color of an element to RGB 255, 177, 142 is called "background". The background property can be set on classes, ids or directly on the HTML element.

```
.background, #background, body{  
background: rgb(255, 169, 142) }
```

If only the background color should be changed can be used:

```
.background{ background-color: rgb(255,  
169, 142) }
```

This example shows the color as background, it is applied via the CSS property "background".

To optimize and compress your CSS code, you can use our [online CSS compressor and optimizer](#) based on csstidy. If you want to create a linear or radial gradient as background or border, check our [CSS Gradient Generator](#).

Hey! You found this booklet interesting? Support Converting Colors with the new Membership Option!

The pro membership hides all ads, plus gives you double the colors in the color bucket, and more awesome pro features!

[Learn more, Memberships starting at \\$2.50/m!](#)

**Follow me
on Twitter!**

@ConvertingColor