

Converting Colors

`RYB(255, 191, 173)`

Have a look what the booklet for
RYB(255, 191, 173) contains.

RYB(255, 191, 173)	3
<i>Conversions</i>	4
<i>Details</i>	6
<i>Harmonies</i>	11
<i>Previews</i>	23
<i>Color Blindness Simulation</i>	26
<i>CSS Examples</i>	29

Color

`RYB(255, 191, 173)`

Conversions

Conversions Part 1

Format	Color
Hex	FFBCAD
RGB	255, 188, 173
RGB Percent	100%, 74%, 68%
CMY	0.0000, 0.2637, 0.3216
CMYK	0.00, 0.26, 0.32, 0.00
HSL	11°, 100%, 84%
HSV	11°, 32%, 100%
XYZ	66.7148, 60.1411, 47.6273
YIQ	206.3230, 44.7470, 9.5390

Conversions

Conversions Part 2

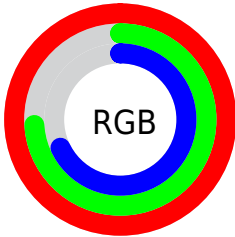
Format	Color
R _Y B	255, 191, 173
Decimal	16759981
CIE Lab	81.91, 22.31, 17.00
CIE LCh	82, 28.048, 37.306
Yxy	60.1411, 0.3824, 0.3447
Android (android.graphics.Color)	4294950061 (0xFFFFBCAD)
YUV	206.3230, -16.4282, 42.6897
Hunter-Lab	77.5507, 17.8451, 17.8729

Details

The RYB color **255, 191, 173** is a light color, and the websafe version is hex **FFCCCC**. A complement of this color would be **173, 210, 255**, and the grayscale version is **206, 206, 206**.

A 20% lighter version of the original color is **247, 255, 228**, and **197, 137, 121** is the 20% darker color. If you saturate the color by 10%, you get **255, 172, 147**, and if you desaturate by 10%, it is **255, 211, 199**.

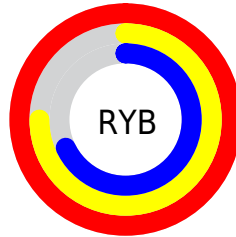
Distribution



Red (100%)

Green (74%)

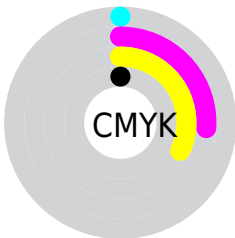
Blue (68%)



Red (100%)

Yellow (75%)

Blue (68%)

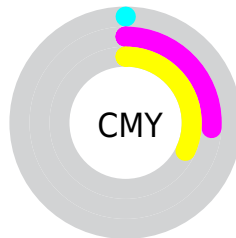


Cyan (0%)

Magenta (26%)

Yellow (32%)

Black (0%)



Cyan (0%)


Magenta (26%)

Yellow (32%)

Brightness & Saturation Gradients

These gradients show how the RYB color 255, 191, 173 changes by changing the brightness by 10 percent. The first figure shows a shift by +10% for each color and the second figure -10%.


Similar to the brightness gradients but the following saturation gradients show a change of the RYB color 255, 191, 173 by changing the saturation by 10% instead.

 255, 191, 173


255, 255, 255


 247, 255, 228

 255, 191, 173

 226, 164, 146

 197, 137, 121

 168, 112, 96

 141, 87, 72

 114, 62, 50

 88, 39, 28

 62, 18, 3

 40, 0, 0

 0, 0, 0

■ 255, 191, 173

■ 255, 191, 173

■ 255, 172, 147

■ 255, 211, 199

■ 255, 151, 122

■ 255, 231, 224

■ 255, 131, 97

■ 255, 250, 250

■ 255, 111, 71

255, 255, 255

■ 255, 91, 46

■ 255, 71, 20

■ 255, 56, 0

Harmonies

Analogous

The Analogous color harmony consists of three colors that are next to each other on the color wheel.



255, 185, 198



255, 191, 173



241, 228, 156

Triad

The Triadic color harmony groups three colors that are evenly spaced from another and form a triangle on the color wheel.



255, 191, 173



158, 199, 217



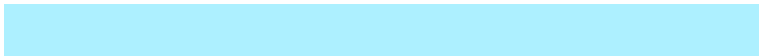
181, 199, 255

Complementary

The Complementary color scheme is a pair of colors which are on the opposite of each other on the color wheel.



255, 191, 173



173, 210, 255

Split Complementary

Split-complementary colors differ from the complementary color scheme. The scheme consists of three colors, the original color and two neighbors of the complement color.



146, 187, 251



255, 191, 173



134, 179, 219

Square

The Square scheme is like the rectangle color scheme, but the four colors are evenly spaced on the color wheel.



255, 191, 173



161, 212, 186



127, 176, 235



216, 195, 246

Rectangle

The Rectangle color scheme consists of four colors that form a rectangle on the color wheel.



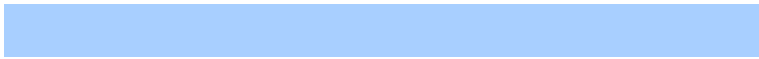
255, 191, 173



187, 225, 151



127, 176, 235



168, 195, 255

Sweetspot

The Sweet Spot groups the original color and five complimentary colors.



255, 191, 173



255, 235, 230



255, 173, 241



128, 116, 112



0, 0, 0



128, 128, 128

Same Dimension

The Same Dimension uses a secret algorithm to generate beautiful new colors.



255, 191, 173



255, 177, 156



213, 255, 173



128, 117, 115



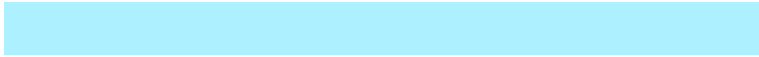
191, 41, 0



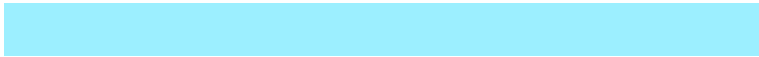
64, 13, 0

Inverse Universe

The Inverse Universe completely reimagines the original color for something new.



173, 210, 255



156, 201, 255



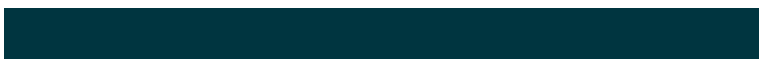
173, 193, 255



115, 121, 128



0, 86, 191



0, 29, 64

Previews

White Background



This preview shows how the RYB color 255, 191, 173 looks on a white background.

Color Contrast Check

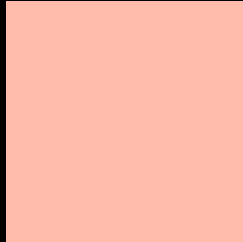
Large Text (above 18pt) WCAG AA × Fail

Any Text WCAG AA × Fail

Large Text (above 18pt) WCAG AAA × Fail

Any Text WCAG AAA × Fail

Black Background



This preview shows how the RYB color 255, 191, 173 looks on a black background.

Color Contrast Check

Large Text (above 18pt) WCAG AA ✓ Pass

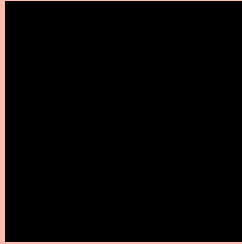
Any Text WCAG AA ✓ Pass

Large Text (above 18pt) WCAG AAA ✓ Pass

Any Text WCAG AAA ✓ Pass

If you want to check with other color combinations, try the [Color Contrast Checker](#).

RYB 255, 191, 173 Background



This preview shows how black text looks on a background with the RYB color 255, 191, 173.

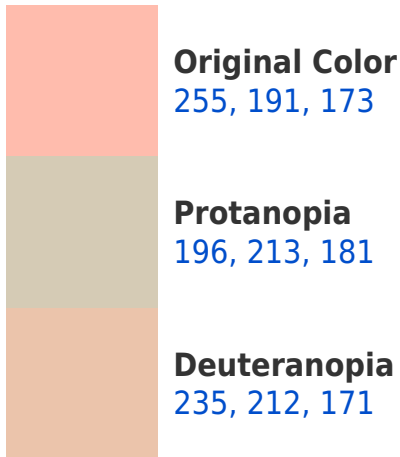



This preview shows how white text looks on a background with the RYB color 255, 191, 173.

Color Blindness Simulation

Color vision deficiency is a very complex topic, and I could not describe the different causes any better than Wikipedia does, so if you want to learn more, you should check out their [article about color blindness](#).

Dichromacy





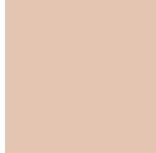
Tritanopia
255, 185, 198

Trichromacy



Original Color

255, 191, 173



Protanomaly

228, 209, 178



Deuteranomaly

242, 202, 172



Tritanomaly

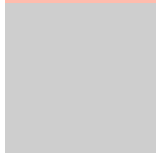
255, 186, 189

Monochromacy



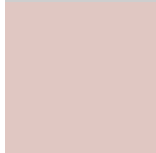
Original Color

255, 191, 173



Achromatopsia

206, 206, 206



Achromatomaly

224, 200, 194

CSS Examples

Text

The CSS property to change the color of the text to RYB 255, 191, 173 is called "color". The color property can be set on classes, ids or directly on the HTML element.

This example shows how text in the color `rgb(255, 188, 173)` looks like.

```
.text, #text, p{  
    color:rgb(255, 188, 173)  
}
```

If you want to add a text shadow in that color use the text-shadow property, you can generate a text shadow directly with our [CSS Text Shadow Generator](#).

Here you see how black text with a 4 pixel rgb(255, 188, 173) colored shadow looks like.

```
.shadow{ text-shadow: 4px 4px 2px rgb(255, 188, 173) }
```

Border

The CSS property to change the border of an element to RYB 255, 191, 173 is called "border". The border property can be set on classes, ids or directly on the HTML element.

This example shows the color as border, it can be applied via the CSS property "border" or "border-color".

```
.border, #border, table{ border:4px solid rgb(255, 188, 173) }
```

If only the border color should be changed use the property `border-color`.

```
.border{ border-color:rgb(255, 188, 173) }
```

If you want to add a box shadow in that color use:

Here you see how a box with a 4 pixel `rgb(255, 188, 173)` colored shadow looks like.

```
.boxshadow{ -moz-box-shadow:4px 4px 4px  
4px rgb(255, 188, 173); -webkit-box-  
shadow:4px 4px 4px 4px rgb(255, 188, 173);  
box-shadow:4px 4px 4px 4px rgb(255, 188,  
173) }
```

Background

The CSS property to change the background color of an element to RGB 255, 191, 173 is called "background". The background property can be set on classes, ids or directly on the HTML element.

```
.background, #background, body{  
background: rgb(255, 188, 173) }
```

If only the background color should be changed can be used:

```
.background{ background-color: rgb(255,  
188, 173) }
```

This example shows the color as background, it is applied via the CSS property "background".

To optimize and compress your CSS code, you can use our [online CSS compressor and optimizer](#) based on csstidy. If you want to create a linear or radial gradient as background or border, check our [CSS Gradient Generator](#).

Hey! You found this booklet interesting? Support Converting Colors with the new Membership Option!

The pro membership hides all ads, plus gives you double the colors in the color bucket, and more awesome pro features!

[Learn more, Memberships starting at \\$2.50/m!](#)

**Follow me
on Twitter!**

@ConvertingColor