

Converting Colors

`RYB(255, 193, 204)`

Have a look what the booklet for
RYB(255, 193, 204) contains.

RYB(255, 193, 204)	3
<i>Conversions</i>	4
<i>Details</i>	6
<i>Harmonies</i>	11
<i>Previews</i>	23
<i>Color Blindness Simulation</i>	26
<i>CSS Examples</i>	29

Color

R_YB(255, 193, 204)

Conversions

Conversions Part 1

Format	Color
Hex	FFC1CC
RGB	255, 193, 204
RGB Percent	100%, 76%, 80%
CMY	0.0000, 0.2431, 0.2000
CMYK	0.00, 0.24, 0.20, 0.00
HSL	349°, 100%, 88%
HSV	349°, 24%, 100%
XYZ	71.2090, 63.7596, 65.6804
YIQ	212.7920, 33.4210, 16.5650

Conversions

Conversions Part 2

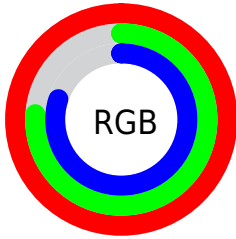
Format	Color
R _Y B	255, 193, 204
Decimal	16761292
CIE Lab	83.84, 23.77, 3.15
CIE LCh	84, 23.979, 7.550
Yxy	63.7596, 0.3549, 0.3178
Android (android.graphics.Color)	4294951372 (0xFFFFC1CC)
YUV	212.7920, -4.3345, 37.0164
Hunter-Lab	79.8496, 19.4477, 7.1256

Details

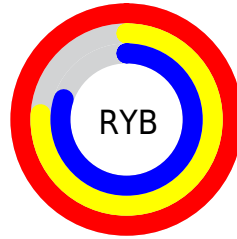
The RYB color **255, 193, 204** is a light color, and the websafe version is hex **FFCCCC**, and the color name is **bubble gum**. A complement of this color would be **193, 227, 255**, and the grayscale version is **213, 213, 213**.

A 20% lighter version of the original color is **255, 250, 255**, and **197, 139, 150** is the 20% darker color. If you saturate the color by 10%, you get **255, 168, 183**, and if you desaturate by 10%, it is **255, 219, 225**.

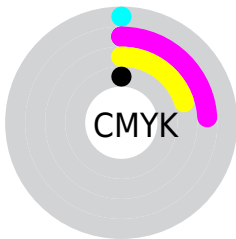
Distribution



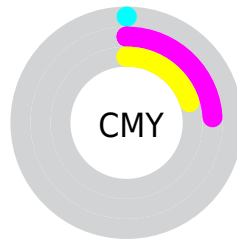
- Red (100%)
- Green (76%)
- Blue (80%)



- Red (100%)
- Yellow (76%)
- Blue (80%)



- Cyan (0%)
- Magenta (24%)
- Yellow (20%)
- Black (0%)




- Cyan (0%)
- Magenta (24%)
- Yellow (20%)

Brightness & Saturation Gradients

These gradients show how the RYB color 255, 193, 204 changes by changing the brightness by 10 percent. The first figure shows a shift by +10% for each color and the second figure -10%.


Similar to the brightness gradients but the following saturation gradients show a change of the RYB color 255, 193, 204 by changing the saturation by 10% instead.


 255, 193, 204


255, 255, 255

 255, 250, 255

 255, 193, 204


 226, 166, 177

 197, 139, 150

 170, 113, 124

 142, 88, 99

 116, 64, 75

 90, 41, 53

 65, 19, 32

 43, 0, 7

 0, 0, 0

■ 255, 193, 204

■ 255, 193, 204

■ 255, 168, 183

■ 255, 219, 225

■ 255, 142, 162

■ 255, 244, 246

■ 255, 117, 141

255, 255, 255

■ 255, 91, 120

■ 255, 66, 99

■ 255, 40, 78

■ 255, 15, 57

■ 255, 0, 45

Harmonies

Analogous

The Analogous color harmony consists of three colors that are next to each other on the color wheel.



243, 195, 227



255, 193, 204



254, 199, 183

Triad

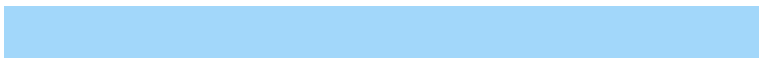
The Triadic color harmony groups three colors that are evenly spaced from another and form a triangle on the color wheel.



255, 193, 204



173, 216, 194



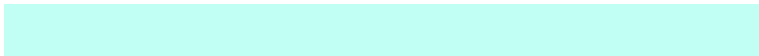
162, 195, 250

Complementary

The Complementary color scheme is a pair of colors which are on the opposite of each other on the color wheel.



255, 193, 204



193, 227, 255

Split Complementary

Split-complementary colors differ from the complementary color scheme. The scheme consists of three colors, the original color and two neighbors of the complement color.



147, 187, 236



255, 193, 204



170, 206, 221

Square

The Square scheme is like the rectangle color scheme, but the four colors are evenly spaced on the color wheel.



255, 193, 204



178, 220, 164



151, 189, 222



190, 205, 253

Rectangle

The Rectangle color scheme consists of four colors that form a rectangle on the color wheel.



255, 193, 204



247, 217, 172



151, 189, 222



155, 192, 246

Sweetspot

The Sweet Spot groups the original color and five complimentary colors.



255, 193, 204



255, 237, 240



244, 193, 255



128, 117, 119



0, 0, 0



128, 128, 128

Same Dimension

The Same Dimension uses a secret algorithm to generate beautiful new colors.



255, 193, 204



255, 181, 194



255, 223, 193



128, 115, 117



191, 0, 34



64, 0, 11

Inverse Universe

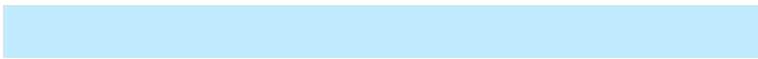
The Inverse Universe completely reimagines the original color for something new.



255, 193, 204



255, 181, 194



193, 218, 255



128, 115, 117



191, 0, 34



64, 0, 11

Previews

White Background



This preview shows how the RYB color 255, 193, 204 looks on a white background.

Color Contrast Check

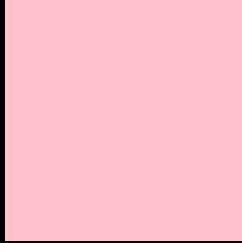
Large Text (above 18pt) WCAG AA × Fail

Any Text WCAG AA × Fail

Large Text (above 18pt) WCAG AAA × Fail

Any Text WCAG AAA × Fail

Black Background



This preview shows how the RYB color 255, 193, 204 looks on a black background.

Color Contrast Check

Large Text (above 18pt) WCAG AA ✓ Pass

Any Text WCAG AA ✓ Pass

Large Text (above 18pt) WCAG AAA ✓ Pass

Any Text WCAG AAA ✓ Pass

If you want to check with other color combinations, try the [Color Contrast Checker](#).

RYB 255, 193, 204 Background



This preview shows how black text looks on a background with the RYB color 255, 193, 204.

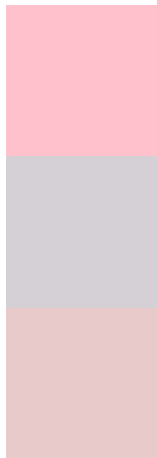


This preview shows how white text looks on a background with the RYB color 255, 193, 204.

Color Blindness Simulation

Color vision deficiency is a very complex topic, and I could not describe the different causes any better than Wikipedia does, so if you want to learn more, you should check out their [article about color blindness](#).


Dichromacy



Original Color
255, 193, 204

Protanopia
212, 208, 213

Deuteranopia
232, 202, 202



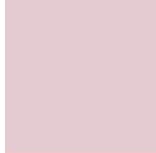
Tritanopia
255, 193, 207

Trichromacy



Original Color

255, 193, 204



Protanomaly

228, 203, 210



Deuteranomaly

240, 199, 203



Tritanomaly

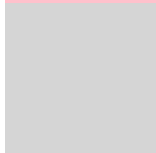
255, 193, 206

Monochromacy



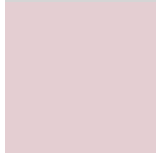
Original Color

255, 193, 204



Achromatopsia

213, 213, 213



Achromatomaly

228, 206, 210

CSS Examples

Text

The CSS property to change the color of the text to RYB 255, 193, 204 is called "color". The color property can be set on classes, ids or directly on the HTML element.

This example shows how text in the color `rgb(255, 193, 204)` looks like.

```
.text, #text, p{  
    color:rgb(255, 193, 204)  
}
```

If you want to add a text shadow in that color use the text-shadow property, you can generate a text shadow directly with our [CSS Text Shadow Generator](#).

Here you see how black text with a 4 pixel rgb(255, 193, 204) colored shadow looks like.

```
.shadow{ text-shadow: 4px 4px 2px rgb(255, 193, 204) }
```

Border

The CSS property to change the border of an element to RYB 255, 193, 204 is called "border". The border property can be set on classes, ids or directly on the HTML element.

This example shows the color as border, it can be applied via the CSS property "border" or "border-color".

```
.border, #border, table{ border:4px solid rgb(255, 193, 204) }
```

If only the border color should be changed use the property `border-color`.

```
.border{ border-color:rgb(255, 193, 204) }
```

If you want to add a box shadow in that color use:

Here you see how a box with a 4 pixel `rgb(255, 193, 204)` colored shadow looks like.

```
.boxshadow{ -moz-box-shadow:4px 4px 4px  
4px rgb(255, 193, 204); -webkit-box-  
shadow:4px 4px 4px 4px rgb(255, 193, 204);  
box-shadow:4px 4px 4px 4px rgb(255, 193,  
204) }
```

Background

The CSS property to change the background color of an element to RYB 255, 193, 204 is called "background". The background property can be set on classes, ids or directly on the HTML element.

```
.background, #background, body{  
background: rgb(255, 193, 204) }
```

If only the background color should be changed can be used:

```
.background{ background-color: rgb(255,  
193, 204) }
```

This example shows the color as background, it is applied via the CSS property "background".

To optimize and compress your CSS code, you can use our [online CSS compressor and optimizer](#) based on csstidy. If you want to create a linear or radial gradient as background or border, check our [CSS Gradient Generator](#).

Hey! You found this booklet interesting? Support Converting Colors with the new Membership Option!

The pro membership hides all ads, plus gives you double the colors in the color bucket, and more awesome pro features!

[Learn more, Memberships starting at \\$2.50/m!](#)

**Follow me
on Twitter!**

@ConvertingColor