

Converting Colors

`RYB(255, 197, 185)`

Have a look what the booklet for
RYB(255, 197, 185) contains.

RYB(255, 197, 185)	3
<i>Conversions</i>	4
<i>Details</i>	6
<i>Harmonies</i>	11
<i>Previews</i>	23
<i>Color Blindness Simulation</i>	26
<i>CSS Examples</i>	29

Color

R_YB(255, 197, 185)

Conversions

Conversions Part 1

Format	Color
Hex	FFC3B9
RGB	255, 195, 185
RGB Percent	100%, 76%, 73%
CMY	0.0000, 0.2343, 0.2745
CMYK	0.00, 0.23, 0.27, 0.00
HSL	9°, 100%, 86%
HSV	9°, 27%, 100%
XYZ	69.5668, 63.9024, 54.5668
YIQ	211.8000, 38.9700, 9.6100

Conversions

Conversions Part 2

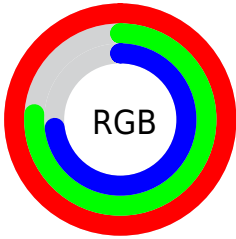
Format	Color
R _Y B	255, 197, 185
Decimal	16761785
CIE Lab	83.91, 19.93, 13.41
CIE LCh	84, 24.021, 33.923
Yxy	63.9024, 0.3700, 0.3398
Android (android.graphics.Color)	4294951865 (0xFFFFC3B9)
YUV	211.8000, -13.2124, 37.8864
Hunter-Lab	79.9390, 15.4461, 15.4856

Details

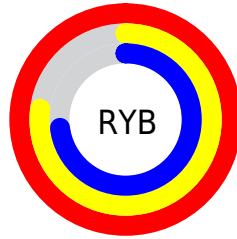
The RYB color **255, 197, 185** is a light color, and the websafe version is hex **FFCCCC**. A complement of this color would be **185, 217, 255**, and the grayscale version is **212, 212, 212**.

A 20% lighter version of the original color is **245, 255, 241**, and **197, 142, 132** is the 20% darker color. If you saturate the color by 10%, you get **255, 175, 160**, and if you desaturate by 10%, it is **255, 218, 211**.

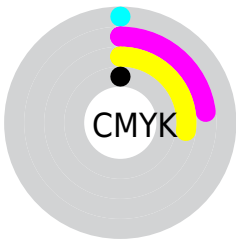
Distribution



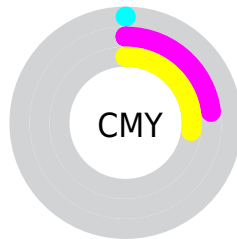
- Red (100%)
- Green (76%)
- Blue (73%)



- Red (100%)
- Yellow (77%)
- Blue (73%)



- Cyan (0%)
- Magenta (23%)
- Yellow (27%)
- Black (0%)



- Cyan (0%)
- Magenta (23%)
- Yellow (27%)

Brightness & Saturation Gradients

These gradients show how the RYB color 255, 197, 185 changes by changing the brightness by 10 percent. The first figure shows a shift by +10% for each color and the second figure -10%.

Similar to the brightness gradients but the following saturation gradients show a change of the RYB color 255, 197, 185 by changing the saturation by 10% instead.

 255, 197, 185

 255, 197, 185

255, 255, 255

 226, 170, 158

 245, 255, 241

 197, 142, 132

 169, 118, 107

 142, 92, 83

 115, 68, 59

 89, 45, 38

 64, 23, 17

 41, 0, 0

 0, 0, 0

■ 255, 197, 185

■ 255, 197, 185

■ 255, 175, 160

■ 255, 218, 211

■ 255, 155, 134

■ 255, 240, 236

■ 255, 134, 108

255, 255, 255

■ 255, 112, 83

■ 255, 91, 57

■ 255, 71, 32

■ 255, 49, 7

■ 255, 43, 0

Harmonies

Analogous

The Analogous color harmony consists of three colors that are next to each other on the color wheel.



255, 193, 207



255, 197, 185



244, 225, 169

Triad

The Triadic color harmony groups three colors that are evenly spaced from another and form a triangle on the color wheel.



255, 197, 185



173, 208, 220



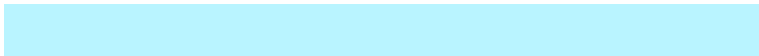
187, 204, 254

Complementary

The Complementary color scheme is a pair of colors which are on the opposite of each other on the color wheel.



255, 197, 185



185, 217, 255

Split Complementary

Split-complementary colors differ from the complementary color scheme. The scheme consists of three colors, the original color and two neighbors of the complement color.



160, 195, 249



255, 197, 185



153, 190, 222

Square

The Square scheme is like the rectangle color scheme, but the four colors are evenly spaced on the color wheel.



255, 197, 185



171, 216, 188



147, 187, 234



217, 202, 247

Rectangle

The Rectangle color scheme consists of four colors that form a rectangle on the color wheel.



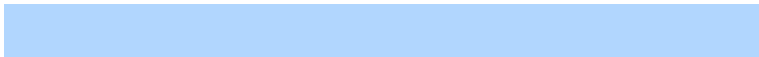
255, 197, 185



205, 231, 165



147, 187, 234



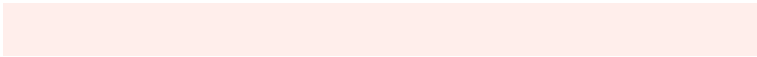
177, 202, 254

Sweetspot

The Sweet Spot groups the original color and five complimentary colors.



255, 197, 185



255, 239, 235



255, 185, 246



128, 117, 115



0, 0, 0



128, 128, 128

Same Dimension

The Same Dimension uses a secret algorithm to generate beautiful new colors.



255, 197, 185



255, 185, 171



226, 255, 185



128, 117, 115



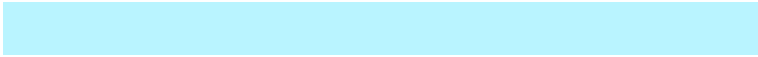
191, 33, 0



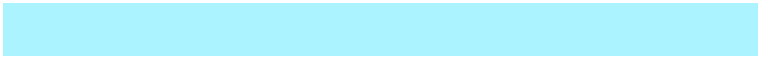
64, 10, 0

Inverse Universe

The Inverse Universe completely reimagines the original color for something new.



185, 217, 255



171, 210, 255



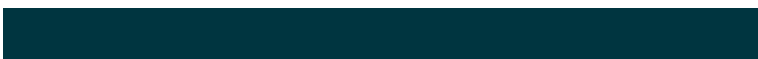
185, 204, 255



115, 121, 128



0, 88, 191



0, 29, 64

Previews

White Background



This preview shows how the RYB color 255, 197, 185 looks on a white background.

Color Contrast Check

Large Text (above 18pt) WCAG AA × Fail

Any Text WCAG AA × Fail

Large Text (above 18pt) WCAG AAA × Fail

Any Text WCAG AAA × Fail

Black Background



This preview shows how the RYB color 255, 197, 185 looks on a black background.

Color Contrast Check

Large Text (above 18pt) WCAG AA ✓ Pass

Any Text WCAG AA ✓ Pass

Large Text (above 18pt) WCAG AAA ✓ Pass

Any Text WCAG AAA ✓ Pass

If you want to check with other color combinations, try the [Color Contrast Checker](#).

RYB 255, 197, 185 Background



This preview shows how black text looks on a background with the RYB color 255, 197, 185.



This preview shows how white text looks on a background with the RYB color 255, 197, 185.

Color Blindness Simulation

Color vision deficiency is a very complex topic, and I could not describe the different causes any better than Wikipedia does, so if you want to learn more, you should check out their [article about color blindness](#).


Dichromacy



Original Color
255, 197, 185

Protanopia
204, 217, 192

Deuteranopia
239, 211, 184



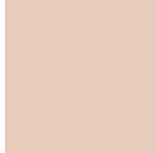
Tritanopia
255, 193, 207

Trichromacy



Original Color

255, 197, 185



Protanomaly

231, 212, 189



Deuteranomaly

245, 206, 184



Tritanomaly

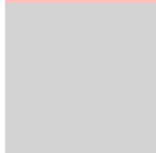
255, 194, 199

Monochromacy



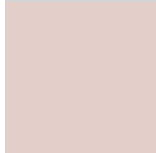
Original Color

255, 197, 185



Achromatopsia

212, 212, 212



Achromatomaly

228, 207, 202

CSS Examples

Text

The CSS property to change the color of the text to RGB 255, 197, 185 is called "color". The color property can be set on classes, ids or directly on the HTML element.

This example shows how text in the color rgb(255, 195, 185) looks like.

```
.text, #text, p{  
    color:rgb(255, 195, 185)  
}
```

If you want to add a text shadow in that color use the text-shadow property, you can generate a text shadow directly with our [CSS Text Shadow Generator](#).

Here you see how black text with a 4 pixel rgb(255, 195, 185) colored shadow looks like.

```
.shadow{ text-shadow: 4px 4px 2px rgb(255, 195, 185) }
```

Border

The CSS property to change the border of an element to RYB 255, 197, 185 is called "border". The border property can be set on classes, ids or directly on the HTML element.

This example shows the color as border, it can be applied via the CSS property "border" or "border-color".

```
.border, #border, table{ border:4px solid rgb(255, 195, 185) }
```

If only the border color should be changed use the property `border-color`.

```
.border{ border-color:rgb(255, 195, 185) }
```

If you want to add a box shadow in that color use:

Here you see how a box with a 4 pixel `rgb(255, 195, 185)` colored shadow looks like.

```
.boxshadow{ -moz-box-shadow:4px 4px 4px  
4px rgb(255, 195, 185); -webkit-box-  
shadow:4px 4px 4px 4px rgb(255, 195, 185);  
box-shadow:4px 4px 4px 4px rgb(255, 195,  
185) }
```

Background

The CSS property to change the background color of an element to RYB 255, 197, 185 is called "background". The background property can be set on classes, ids or directly on the HTML element.

```
.background, #background, body{  
background: rgb(255, 195, 185) }
```

If only the background color should be changed can be used:

```
.background{ background-color: rgb(255,  
195, 185) }
```

This example shows the color as background, it is applied via the CSS property "background".

To optimize and compress your CSS code, you can use our [online CSS compressor and optimizer](#) based on csstidy. If you want to create a linear or radial gradient as background or border, check our [CSS Gradient Generator](#).

Hey! You found this booklet interesting? Support Converting Colors with the new Membership Option!

The pro membership hides all ads, plus gives you double the colors in the color bucket, and more awesome pro features!

[Learn more, Memberships starting at \\$2.50/m!](#)

**Follow me
on Twitter!**

@ConvertingColor