

Converting Colors

`RYB(255, 199, 200)`

Have a look what the booklet for
RYB(255, 199, 200) contains.

RYB(255, 199, 200)	3
<i>Conversions</i>	4
<i>Details</i>	6
<i>Harmonies</i>	11
<i>Previews</i>	23
<i>Color Blindness Simulation</i>	26
<i>CSS Examples</i>	29

Color

R_YB(255, 199, 200)

Conversions

Conversions Part 1

Format	Color
Hex	FFC7C8
RGB	255, 199, 200
RGB Percent	100%, 78%, 78%
CMY	0.0000, 0.2196, 0.2157
CMYK	0.00, 0.22, 0.22, 0.00
HSL	359°, 100%, 89%
HSV	359°, 22%, 100%
XYZ	72.0888, 66.2770, 63.6368
YIQ	215.8580, 33.0550, 12.1830

Conversions

Conversions Part 2

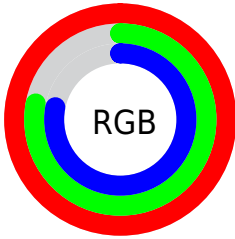
Format	Color
R _Y B	255, 199, 200
Decimal	16762824
CIE Lab	85.14, 20.04, 7.16
CIE LCh	85, 21.283, 19.654
Yxy	66.2770, 0.3569, 0.3281
Android (android.graphics.Color)	4294952904 (0xFFFFC7C8)
YUV	215.8580, -7.8180, 34.3275
Hunter-Lab	81.4107, 15.5922, 10.6419

Details

The RYB color **255, 199, 200** is a light color, and the websafe version is hex **FFCCCC**. A complement of this color would be **199, 227, 255**, and the grayscale version is **216, 216, 216**.

A 20% lighter version of the original color is **255, 255, 255**, and **197, 145, 146** is the 20% darker color. If you saturate the color by 10%, you get **255, 174, 175**, and if you desaturate by 10%, it is **255, 225, 225**.

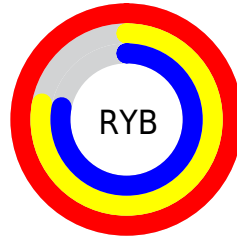
Distribution



Red (100%)

Green (78%)

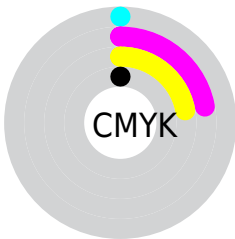
Blue (78%)



Red (100%)

Yellow (78%)

Blue (78%)

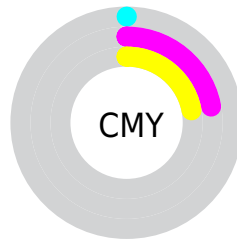


Cyan (0%)

Magenta (22%)

Yellow (22%)

Black (0%)



Cyan (0%)

Magenta (22%)

Yellow (22%)

Brightness & Saturation Gradients


These gradients show how the RYB color 255, 199, 200 changes by changing the brightness by 10 percent. The first figure shows a shift by +10% for each color and the second figure -10%.

Similar to the brightness gradients but the following saturation gradients show a change of the RYB color 255, 199, 200 by changing the saturation by 10% instead.


 255, 199, 200

255, 255, 255

 255, 199, 200


 226, 172, 173

 197, 145, 146

 170, 119, 120

 142, 94, 96

 116, 70, 72

 90, 47, 50


 66, 25, 29

 43, 2, 2

 0, 0, 0

 255, 199, 200

 255, 199, 200

 255, 174, 175

 255, 225, 225

 255, 148, 150

 255, 250, 250

 255, 122, 125

255, 255, 255

 255, 97, 100

 255, 71, 75

 255, 46, 50

 255, 20, 25

 255, 0, 5

Harmonies

Analogous

The Analogous color harmony consists of three colors that are next to each other on the color wheel.



249, 199, 220



255, 199, 200



250, 212, 183

Triad

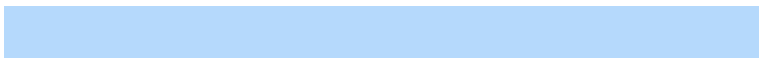
The Triadic color harmony groups three colors that are evenly spaced from another and form a triangle on the color wheel.



255, 199, 200



186, 221, 216



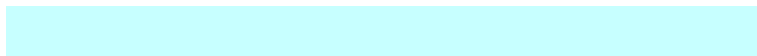
181, 205, 252

Complementary

The Complementary color scheme is a pair of colors which are on the opposite of each other on the color wheel.



255, 199, 200



199, 227, 255

Split Complementary

Split-complementary colors differ from the complementary color scheme. The scheme consists of three colors, the original color and two neighbors of the complement color.



163, 197, 243



255, 199, 200



171, 203, 224

Square

The Square scheme is like the rectangle color scheme, but the four colors are evenly spaced on the color wheel.



255, 199, 200



175, 216, 177



159, 192, 225



207, 210, 250

Rectangle

The Rectangle color scheme consists of four colors that form a rectangle on the color wheel.



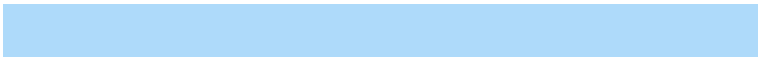
255, 199, 200



241, 235, 176



159, 192, 225



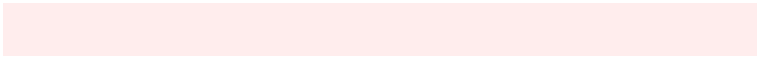
174, 202, 250

Sweetspot

The Sweet Spot groups the original color and five complimentary colors.



255, 199, 200



255, 237, 237



253, 199, 255



128, 117, 117



0, 0, 0



128, 128, 128

Same Dimension

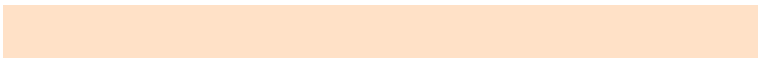
The Same Dimension uses a secret algorithm to generate beautiful new colors.



255, 199, 200



255, 189, 190



255, 248, 199



128, 115, 115



191, 0, 3



64, 0, 1

Inverse Universe

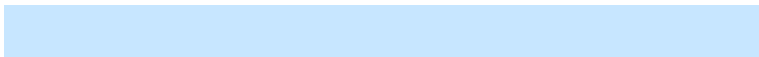
The Inverse Universe completely reimagines the original color for something new.



255, 199, 200



255, 189, 190



199, 219, 255



128, 115, 115



191, 0, 3



64, 0, 1

Previews

White Background



This preview shows how the RYB color 255, 199, 200 looks on a white background.

Color Contrast Check

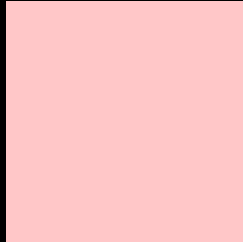
Large Text (above 18pt) WCAG AA × Fail

Any Text WCAG AA × Fail

Large Text (above 18pt) WCAG AAA × Fail

Any Text WCAG AAA × Fail

Black Background



This preview shows how the RYB color 255, 199, 200 looks on a black background.

Color Contrast Check

Large Text (above 18pt) WCAG AA ✓ Pass

Any Text WCAG AA ✓ Pass

Large Text (above 18pt) WCAG AAA ✓ Pass

Any Text WCAG AAA ✓ Pass

If you want to check with other color combinations, try the [Color Contrast Checker](#).

RYB 255, 199, 200 Background



This preview shows how black text looks on a background with the RYB color 255, 199, 200.

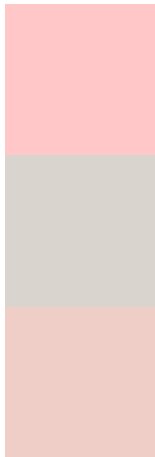


This preview shows how white text looks on a background with the RYB color 255, 199, 200.

Color Blindness Simulation

Color vision deficiency is a very complex topic, and I could not describe the different causes any better than Wikipedia does, so if you want to learn more, you should check out their [article about color blindness](#).


Dichromacy



Original Color
255, 199, 200

Protanopia
218, 216, 207

Deuteranopia
239, 207, 199



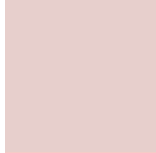
Tritanopia
255, 198, 212

Trichromacy



Original Color

255, 199, 200



Protanomaly

231, 207, 204



Deuteranomaly

245, 203, 199



Tritanomaly

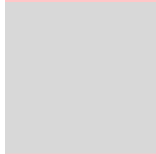
255, 198, 208

Monochromacy



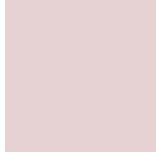
Original Color

255, 199, 200



Achromatopsia

216, 216, 216



Achromatomaly

230, 210, 210

CSS Examples

Text

The CSS property to change the color of the text to RYB 255, 199, 200 is called "color". The color property can be set on classes, ids or directly on the HTML element.

This example shows how text in the color `rgb(255, 199, 200)` looks like.

```
.text, #text, p{  
    color:rgb(255, 199, 200)  
}
```

If you want to add a text shadow in that color use the text-shadow property, you can generate a text shadow directly with our [CSS Text Shadow Generator](#).

Here you see how black text with a 4 pixel rgb(255, 199, 200) colored shadow looks like.

```
.shadow{ text-shadow: 4px 4px 2px rgb(255, 199, 200) }
```

Border

The CSS property to change the border of an element to RYB 255, 199, 200 is called "border". The border property can be set on classes, ids or directly on the HTML element.

This example shows the color as border, it can be applied via the CSS property "border" or "border-color".

```
.border, #border, table{ border:4px solid rgb(255, 199, 200) }
```

If only the border color should be changed use the property `border-color`.

```
.border{ border-color:rgb(255, 199, 200) }
```

If you want to add a box shadow in that color use:

Here you see how a box with a 4 pixel `rgb(255, 199, 200)` colored shadow looks like.

```
.boxshadow{ -moz-box-shadow:4px 4px 4px  
4px rgb(255, 199, 200); -webkit-box-  
shadow:4px 4px 4px 4px rgb(255, 199, 200);  
box-shadow:4px 4px 4px 4px rgb(255, 199,  
200) }
```

Background

The CSS property to change the background color of an element to RYB 255, 199, 200 is called "background". The background property can be set on classes, ids or directly on the HTML element.

```
.background, #background, body{  
background: rgb(255, 199, 200) }
```

If only the background color should be changed can be used:

```
.background{ background-color: rgb(255,  
199, 200) }
```

This example shows the color as background, it is applied via the CSS property "background".

To optimize and compress your CSS code, you can use our [online CSS compressor and optimizer](#) based on csstidy. If you want to create a linear or radial gradient as background or border, check our [CSS Gradient Generator](#).

Hey! You found this booklet interesting? Support Converting Colors with the new Membership Option!

The pro membership hides all ads, plus gives you double the colors in the color bucket, and more awesome pro features!

[Learn more, Memberships starting at \\$2.50/m!](#)

**Follow me
on Twitter!**

@ConvertingColor