

Converting Colors

`RYB(255, 204, 206)`

Have a look what the booklet for
RYB(255, 204, 206) contains.

RYB(255, 204, 206)	3
<i>Conversions</i>	4
<i>Details</i>	6
<i>Harmonies</i>	11
<i>Previews</i>	23
<i>Color Blindness Simulation</i>	26
<i>CSS Examples</i>	29

Color

R_YB(255, 204, 206)

Conversions

Conversions Part 1

Format	Color
Hex	FFCCCE
RGB	255, 204, 206
RGB Percent	100%, 80%, 81%
CMY	0.0000, 0.2000, 0.1922
CMYK	0.00, 0.20, 0.19, 0.00
HSL	358°, 100%, 90%
HSV	358°, 20%, 100%
XYZ	73.9734, 68.9020, 67.7931
YIQ	219.4770, 29.7540, 11.4340

Conversions

Conversions Part 2

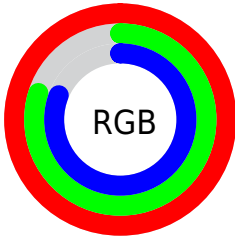
Format	Color
R _Y B	255, 204, 206
Decimal	16764110
CIE Lab	86.46, 18.30, 5.87
CIE LCh	86, 19.219, 17.774
Yxy	68.9020, 0.3511, 0.3271
Android (android.graphics.Color)	4294954190 (0xFFFFCCCE)
YUV	219.4770, -6.6442, 31.1537
Hunter-Lab	83.0072, 13.8110, 9.6821

Details

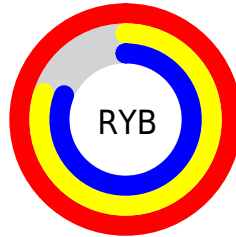
The RYB color **255, 204, 206** is a light color, and the websafe version is hex **FFCCCC**. A complement of this color would be **204, 230, 255**, and the grayscale version is **220, 220, 220**.

A 20% lighter version of the original color is **255, 255, 255**, and **198, 150, 152** is the 20% darker color. If you saturate the color by 10%, you get **255, 179, 182**, and if you desaturate by 10%, it is **255, 230, 231**.

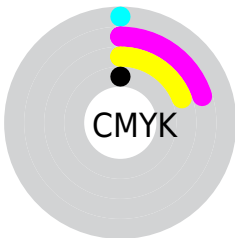
Distribution



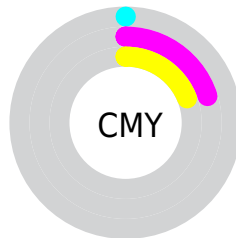
- Red (100%)
- Green (80%)
- Blue (81%)



- Red (100%)
- Yellow (80%)
- Blue (81%)



- Cyan (0%)
- Magenta (20%)
- Yellow (19%)
- Black (0%)



- Cyan (0%)
- Magenta (20%)
- Yellow (19%)

Brightness & Saturation Gradients

These gradients show how the RYB color 255, 204, 206 changes by changing the brightness by 10 percent. The first figure shows a shift by +10% for each color and the second figure -10%.

Similar to the brightness gradients but the following saturation gradients show a change of the RYB color 255, 204, 206 by changing the saturation by 10% instead.


 255, 204, 206

255, 255, 255

 255, 204, 206


 226, 176, 179

 198, 150, 152

 170, 124, 126

 143, 99, 101

 117, 74, 77

 91, 51, 54

 67, 29, 33

 44, 8, 10

 8, 0, 0

■ 255, 204, 206

■ 255, 204, 206

■ 255, 179, 182

■ 255, 230, 231

■ 255, 153, 157

255, 255, 255

■ 255, 128, 133

■ 255, 102, 108

■ 255, 77, 84

■ 255, 51, 59

■ 255, 25, 35

■ 255, 0, 10

Harmonies

Analogous

The Analogous color harmony consists of three colors that are next to each other on the color wheel.



249, 204, 225



255, 204, 206



251, 214, 190

Triad

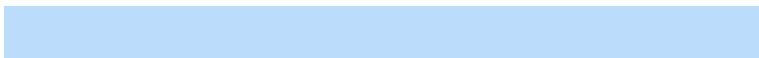
The Triadic color harmony groups three colors that are evenly spaced from another and form a triangle on the color wheel.



255, 204, 206



191, 224, 217



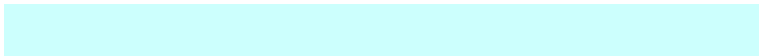
187, 209, 251

Complementary

The Complementary color scheme is a pair of colors which are on the opposite of each other on the color wheel.



255, 204, 206



204, 230, 255

Split Complementary

Split-complementary colors differ from the complementary color scheme. The scheme consists of three colors, the original color and two neighbors of the complement color.



172, 202, 243



255, 204, 206



180, 209, 227

Square

The Square scheme is like the rectangle color scheme, but the four colors are evenly spaced on the color wheel.



255, 204, 206



182, 219, 182



169, 198, 227



210, 214, 251

Rectangle

The Rectangle color scheme consists of four colors that form a rectangle on the color wheel.



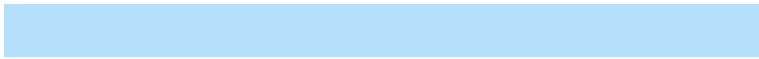
255, 204, 206



243, 236, 183



169, 198, 227



181, 207, 250

Sweetspot

The Sweet Spot groups the original color and five complimentary colors.



255, 204, 206



255, 240, 240



252, 204, 255



128, 119, 119



0, 0, 0



128, 128, 128

Same Dimension

The Same Dimension uses a secret algorithm to generate beautiful new colors.



255, 204, 206



255, 194, 196



255, 246, 204



128, 115, 115



191, 0, 8



64, 0, 3

Inverse Universe

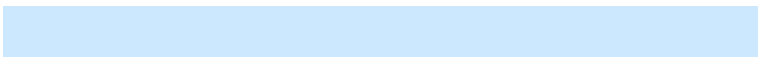
The Inverse Universe completely reimagines the original color for something new.



255, 204, 206



255, 194, 196



204, 222, 255



128, 115, 115



191, 0, 7



64, 0, 2

Previews

White Background



This preview shows how the RYB color 255, 204, 206 looks on a white background.

Color Contrast Check

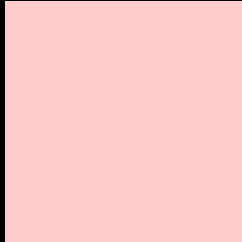
Large Text (above 18pt) WCAG AA × Fail

Any Text WCAG AA × Fail

Large Text (above 18pt) WCAG AAA × Fail

Any Text WCAG AAA × Fail

Black Background



This preview shows how the RYB color 255, 204, 206 looks on a black background.

Color Contrast Check

Large Text (above 18pt) WCAG AA ✓ Pass

Any Text WCAG AA ✓ Pass

Large Text (above 18pt) WCAG AAA ✓ Pass

Any Text WCAG AAA ✓ Pass

If you want to check with other color combinations, try the [Color Contrast Checker](#).

RYB 255, 204, 206 Background



This preview shows how black text looks on a background with the RYB color 255, 204, 206.



This preview shows how white text looks on a background with the RYB color 255, 204, 206.

Color Blindness Simulation

Color vision deficiency is a very complex topic, and I could not describe the different causes any better than Wikipedia does, so if you want to learn more, you should check out their [article about color blindness](#).

Dichromacy



Original Color
255, 204, 206

Protanopia
221, 219, 212

Deuteranopia
242, 209, 205



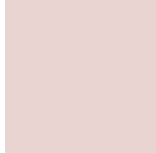
Tritanopia
255, 203, 218

Trichromacy



Original Color

255, 204, 206



Protanomaly

233, 212, 210



Deuteranomaly

247, 207, 205



Tritanomaly

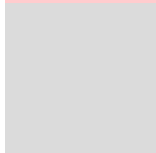
255, 203, 214

Monochromacy



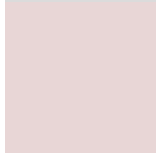
Original Color

255, 204, 206



Achromatopsia

219, 219, 219



Achromatomaly

232, 214, 214

CSS Examples

Text

The CSS property to change the color of the text to RYB 255, 204, 206 is called "color". The color property can be set on classes, ids or directly on the HTML element.

This example shows how text in the color `rgb(255, 204, 206)` looks like.

```
.text, #text, p{  
    color:rgb(255, 204, 206)  
}
```

If you want to add a text shadow in that color use the text-shadow property, you can generate a text shadow directly with our [CSS Text Shadow Generator](#).

Here you see how black text with a 4 pixel rgb(255, 204, 206) colored shadow looks like.

```
.shadow{ text-shadow: 4px 4px 2px rgb(255, 204, 206) }
```

Border

The CSS property to change the border of an element to RYB 255, 204, 206 is called "border". The border property can be set on classes, ids or directly on the HTML element.

This example shows the color as border, it can be applied via the CSS property "border" or "border-color".

```
.border, #border, table{ border:4px solid rgb(255, 204, 206) }
```

If only the border color should be changed use the property `border-color`.

```
.border{ border-color:rgb(255, 204, 206) }
```

If you want to add a box shadow in that color use:

Here you see how a box with a 4 pixel `rgb(255, 204, 206)` colored shadow looks like.

```
.boxshadow{ -moz-box-shadow:4px 4px 4px  
4px rgb(255, 204, 206); -webkit-box-  
shadow:4px 4px 4px 4px rgb(255, 204, 206);  
box-shadow:4px 4px 4px 4px rgb(255, 204,  
206) }
```

Background

The CSS property to change the background color of an element to RYB 255, 204, 206 is called "background". The background property can be set on classes, ids or directly on the HTML element.

```
.background, #background, body{  
background: rgb(255, 204, 206) }
```

If only the background color should be changed can be used:

```
.background{ background-color: rgb(255,  
204, 206) }
```

This example shows the color as background, it is applied via the CSS property "background".

To optimize and compress your CSS code, you can use our [online CSS compressor and optimizer](#) based on csstidy. If you want to create a linear or radial gradient as background or border, check our [CSS Gradient Generator](#).

Hey! You found this booklet interesting? Support Converting Colors with the new Membership Option!

The pro membership hides all ads, plus gives you double the colors in the color bucket, and more awesome pro features!

[Learn more, Memberships starting at \\$2.50/m!](#)

**Follow me
on Twitter!**

@ConvertingColor