

Converting Colors

`RYB(255, 60, 136)`

Have a look what the booklet for
RYB(255, 60, 136) contains.

RYB(255, 60, 136)	3
<i>Conversions</i>	4
<i>Details</i>	6
<i>Harmonies</i>	11
<i>Previews</i>	23
<i>Color Blindness Simulation</i>	26
<i>CSS Examples</i>	29

Color

`RYB(255, 60, 136)`

Conversions

Conversions Part 1

Format	Color
Hex	FF3C88
RGB	255, 60, 136
RGB Percent	100%, 24%, 53%
CMY	0.0000, 0.7647, 0.4667
CMYK	0.00, 0.76, 0.47, 0.00
HSL	337°, 100%, 62%
HSV	337°, 76%, 100%
XYZ	47.2998, 26.2693, 25.8701
YIQ	126.9690, 91.8240, 64.9760

Conversions

Conversions Part 2

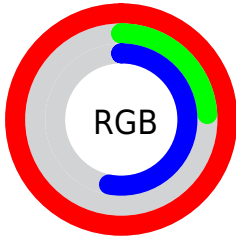
Format	Color
RYB	255, 60, 136
Decimal	16727176
CIELab	58.29, 76.00, 4.22
CIELCh	58, 76.120, 3.175
Yxy	26.2693, 0.4757, 0.2642
Android (android.graphics.Color)	4294917256 (0xFFFF3C88)
YUV	126.9690, 4.4523, 112.2832
Hunter-Lab	51.2536, 75.0365, 5.9511

Details

The RYB color **255, 60, 136** is a dark color, and the websafe version is hex **FF3399**. The color can be described as middle washed rose. A complement of this color would be **60, 181, 255**, and the grayscale version is **127, 127, 127**.

A 20% lighter version of the original color is **255, 124, 189**, and **192, 0, 87** is the 20% darker color. If you saturate the color by 10%, you get **255, 34, 120**, and if you desaturate by 10%, it is **255, 86, 152**.

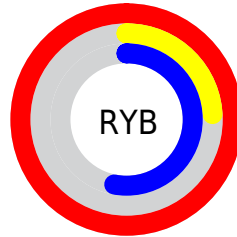
Distribution



Red (100%)

Green (24%)

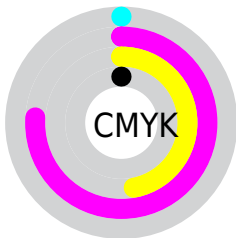
Blue (53%)



Red (100%)

Yellow (24%)

Blue (53%)

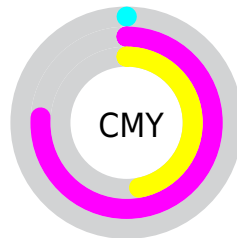


Cyan (0%)

Magenta (76%)

Yellow (47%)

Black (0%)



Cyan (0%)


Magenta (76%)

Yellow (47%)

Brightness & Saturation Gradients

These gradients show how the RYB color 255, 60, 136 changes by changing the brightness by 10 percent. The first figure shows a shift by +10% for each color and the second figure -10%.

Similar to the brightness gradients but the following saturation gradients show a change of the RYB color 255, 60, 136 by changing the saturation by 10% instead.

 255, 60, 136

 255, 60, 136

255, 255, 255

 223, 6, 111

 255, 124, 189

 192, 0, 87

 255, 154, 217

 161, 0, 64

 255, 184, 245

 131, 0, 42

 255, 214, 255

 100, 0, 22

 255, 244, 255

 72, 0, 4

 39, 0, 1

 0, 0, 0

 255, 60, 136

 255, 60, 136

■ 255, 34, 120

■ 255, 86, 152

■ 255, 9, 105

■ 255, 111, 167

■ 255, 0, 99

■ 255, 137, 183

■ 255, 162, 198

■ 255, 188, 214

■ 255, 213, 229

■ 255, 239, 245

255, 255, 255

Harmonies

Analogous

The Analogous color harmony consists of three colors that are next to each other on the color wheel.



224, 83, 202



255, 60, 136



249, 80, 71

Triad

The Triadic color harmony groups three colors that are evenly spaced from another and form a triangle on the color wheel.



255, 60, 136



0, 157, 63



0, 99, 255

Complementary

The Complementary color scheme is a pair of colors which are on the opposite of each other on the color wheel.



255, 60, 136



60, 181, 255

Split Complementary

Split-complementary colors differ from the complementary color scheme. The scheme consists of three colors, the original color and two neighbors of the complement color.



0, 94, 212



255, 60, 136



0, 114, 166

Square

The Square scheme is like the rectangle color scheme, but the four colors are evenly spaced on the color wheel.



255, 60, 136



27, 163, 0



0, 91, 169



0, 93, 255

Rectangle

The Rectangle color scheme consists of four colors that form a rectangle on the color wheel.



255, 60, 136



229, 146, 27



0, 91, 169



0, 99, 247

Sweetspot

The Sweet Spot groups the original color and five complimentary colors.



255, 60, 136



255, 196, 219



177, 60, 255



128, 92, 106



0, 0, 0



128, 128, 128

Same Dimension

The Same Dimension uses a secret algorithm to generate beautiful new colors.



255, 60, 136



255, 20, 112



255, 82, 60



128, 115, 120



191, 0, 75



64, 0, 25

Inverse Universe

The Inverse Universe completely reimagines the original color for something new.



255, 60, 136



255, 20, 112



60, 152, 255



128, 115, 120



191, 0, 75



64, 0, 25

Previews

White Background



This preview shows how the RYB color 255, 60, 136 looks on a white background.

Color Contrast Check

Large Text (above 18pt) WCAG AA ✓ Pass

Any Text WCAG AA ✗ Fail

Large Text (above 18pt) WCAG AAA ✗ Fail

Any Text WCAG AAA ✗ Fail

Black Background



This preview shows how the RYB color 255, 60, 136 looks on a black background.

Color Contrast Check

Large Text (above 18pt) WCAG AA ✓ Pass

Any Text WCAG AA ✓ Pass

Large Text (above 18pt) WCAG AAA ✓ Pass

Any Text WCAG AAA × Fail

If you want to check with other color combinations, try the [Color Contrast Checker](#).

RYB 255, 60, 136 Background



This preview shows how black text looks on a background with the RYB color 255, 60, 136.

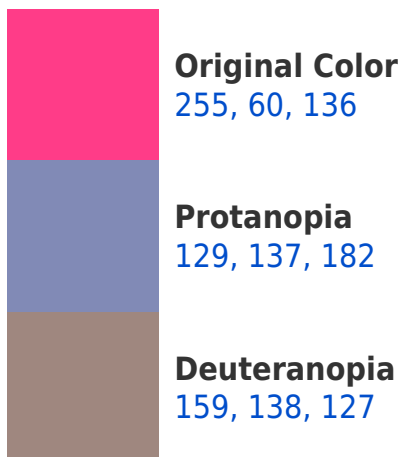


This preview shows how white text looks on a background with the RYB color 255, 60, 136.

Color Blindness Simulation

Color vision deficiency is a very complex topic, and I could not describe the different causes any better than Wikipedia does, so if you want to learn more, you should check out their [article about color blindness](#).

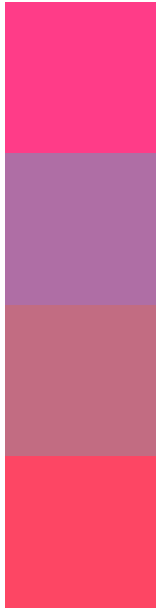
Dichromacy





Tritanopia
252, 75, 79

Trichromacy



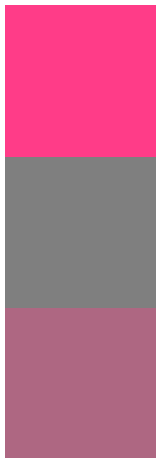
Original Color
255, 60, 136

Protanomaly
175, 110, 165

Deuteranomaly
194, 108, 130

Tritanomaly
253, 70, 100

Monochromacy



Original Color
255, 60, 136

Achromatopsia
127, 127, 127

Achromatomaly
174, 103, 130

CSS Examples

Text

The CSS property to change the color of the text to RYB 255, 60, 136 is called "color". The color property can be set on classes, ids or directly on the HTML element.

This example shows how text in the color `rgb(255, 60, 136)` looks like.

```
.text, #text, p{  
    color:rgb(255, 60, 136)  
}
```

If you want to add a text shadow in that color use the text-shadow property, you can generate a text shadow directly with our [CSS Text Shadow Generator](#).

Here you see how black text with a 4 pixel rgb(255, 60, 136) colored shadow looks like.

```
.shadow{ text-shadow: 4px 4px 2px rgb(255, 60, 136) }
```

Border

The CSS property to change the border of an element to RYB 255, 60, 136 is called "border". The border property can be set on classes, ids or directly on the HTML element.

This example shows the color as border, it can be applied via the CSS property "border" or "border-color".

```
.border, #border, table{ border:4px solid rgb(255, 60, 136) }
```

If only the border color should be changed use the property `border-color`.

```
.border{ border-color:rgb(255, 60, 136) }
```

If you want to add a box shadow in that color use:

Here you see how a box with a 4 pixel `rgb(255, 60, 136)` colored shadow looks like.

```
.boxshadow{ -moz-box-shadow:4px 4px 4px  
4px rgb(255, 60, 136); -webkit-box-  
shadow:4px 4px 4px 4px rgb(255, 60, 136);  
box-shadow:4px 4px 4px 4px rgb(255, 60,  
136) }
```

Background

The CSS property to change the background color of an element to RGB 255, 60, 136 is called "background". The background property can be set on classes, ids or directly on the HTML element.

```
.background, #background, body{  
background: rgb(255, 60, 136) }
```

If only the background color should be changed can be used:

```
.background{ background-color: rgb(255, 60,  
136) }
```

This example shows the color as background, it is applied via the CSS property "background".

To optimize and compress your CSS code, you can use our [online CSS compressor and optimizer](#) based on csstidy. If you want to create a linear or radial gradient as background or border, check our [CSS Gradient Generator](#).

Hey! You found this booklet interesting? Support Converting Colors with the new Membership Option!

The pro membership hides all ads, plus gives you double the colors in the color bucket, and more awesome pro features!

[Learn more, Memberships starting at \\$2.50/m!](#)

**Follow me
on Twitter!**

@ConvertingColor