

Converting Colors

`RYB(255, 67, 122)`

Have a look what the booklet for
RYB(255, 67, 122) contains.

RYB(255, 67, 122)	3
<i>Conversions</i>	4
<i>Details</i>	6
<i>Harmonies</i>	11
<i>Previews</i>	23
<i>Color Blindness Simulation</i>	26
<i>CSS Examples</i>	29

Color

`RYB(255, 67, 122)`

Conversions

Conversions Part 1

Format	Color
Hex	FF437A
RGB	255, 67, 122
RGB Percent	100%, 26%, 48%
CMY	0.0000, 0.7373, 0.5216
CMYK	0.00, 0.74, 0.52, 0.00
HSL	342°, 100%, 63%
HSV	342°, 74%, 100%
XYZ	46.7600, 26.6795, 21.0975
YIQ	129.4820, 94.3930, 56.9610

Conversions

Conversions Part 2

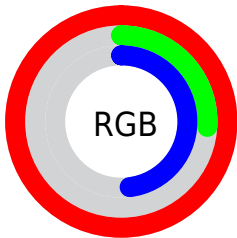
Format	Color
R_{YB}	255, 67, 122
Decimal	16728954
CIE _{Lab}	58.68, 72.83, 13.02
CIE _{LCh}	59, 73.987, 10.136
Yxy	26.6795, 0.4946, 0.2822
Android (android.graphics.Color)	4294919034 (0xFFFF437A)
YUV	129.4820, -3.6886, 110.0793
Hunter-Lab	51.6522, 71.2024, 11.9393

Details

The RYB color **255, 67, 122** is a dark color, and the websafe version is hex **FF3366**. The color can be described as middle washed rose. A complement of this color would be **67, 177, 255**, and the grayscale version is **129, 129, 129**.

A 20% lighter version of the original color is **255, 129, 174**, and **192, 0, 74** is the 20% darker color. If you saturate the color by 10%, you get **255, 41, 104**, and if you desaturate by 10%, it is **255, 92, 140**.

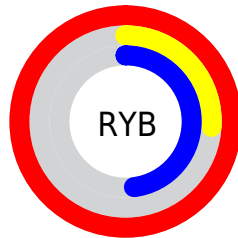
Distribution



Red (100%)

Green (26%)

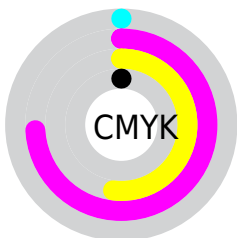
Blue (48%)



Red (100%)

Yellow (26%)

Blue (48%)

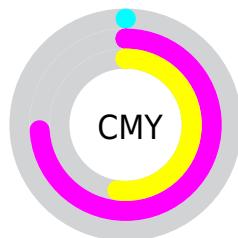


Cyan (0%)

Magenta (74%)

Yellow (52%)

Black (0%)



Cyan (0%)

Magenta (74%)

Yellow (52%)

Brightness & Saturation Gradients

These gradients show how the RYB color 255, 67, 122 changes by changing the brightness by 10 percent. The first figure shows a shift by +10% for each color and the second figure -10%.

Similar to the brightness gradients but the following saturation gradients show a change of the RYB color 255, 67, 122 by changing the saturation by 10% instead.



255, 67, 122



255, 67, 122

255, 255, 255



223, 26, 97



255, 129, 174



192, 0, 74



255, 159, 201



161, 0, 52



255, 188, 229



130, 0, 31



255, 218, 255



100, 0, 6



255, 248, 255



70, 0, 4



38, 0, 1



0, 0, 0



255, 67, 122



255, 67, 122

■ 255, 41, 104

■ 255, 92, 140

■ 255, 16, 86

■ 255, 118, 158

■ 255, 0, 75

■ 255, 144, 176

■ 255, 169, 194

■ 255, 195, 212

■ 255, 220, 230

■ 255, 245, 248

255, 255, 255

Harmonies

Analogous

The Analogous color harmony consists of three colors that are next to each other on the color wheel.



234, 79, 187



255, 67, 122



242, 97, 60

Triad

The Triadic color harmony groups three colors that are evenly spaced from another and form a triangle on the color wheel.



255, 67, 122



23, 160, 107



0, 98, 255

Complementary

The Complementary color scheme is a pair of colors which are on the opposite of each other on the color wheel.



255, 67, 122



67, 177, 255

Split Complementary

Split-complementary colors differ from the complementary color scheme. The scheme consists of three colors, the original color and two neighbors of the complement color.



0, 96, 224



255, 67, 122



0, 107, 167

Square

The Square scheme is like the rectangle color scheme, but the four colors are evenly spaced on the color wheel.



255, 67, 122



5, 150, 0



0, 87, 170



0, 91, 255

Rectangle

The Rectangle color scheme consists of four colors that form a rectangle on the color wheel.



255, 67, 122



219, 204, 13



0, 87, 170



0, 100, 254

Sweetspot

The Sweet Spot groups the original color and five complimentary colors.



255, 67, 122



255, 199, 215



199, 67, 255



128, 94, 104



0, 0, 0



128, 128, 128

Same Dimension

The Same Dimension uses a secret algorithm to generate beautiful new colors.



255, 67, 122



255, 31, 96



255, 115, 67



128, 115, 118



191, 0, 56



64, 0, 19

Inverse Universe

The Inverse Universe completely reimagines the original color for something new.



255, 67, 122



255, 31, 96



67, 150, 255



128, 115, 118



191, 0, 56



64, 0, 19

Previews

White Background



This preview shows how the RYB color 255, 67, 122 looks on a white background.

Color Contrast Check

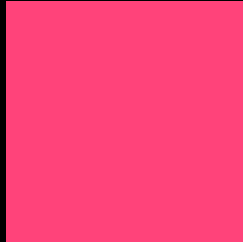
Large Text (above 18pt) WCAG AA ✓ Pass

Any Text WCAG AA ✗ Fail

Large Text (above 18pt) WCAG AAA ✗ Fail

Any Text WCAG AAA ✗ Fail

Black Background



This preview shows how the RYB color 255, 67, 122 looks on a black background.

Color Contrast Check

Large Text (above 18pt) WCAG AA ✓ Pass

Any Text WCAG AA ✓ Pass

Large Text (above 18pt) WCAG AAA ✓ Pass

Any Text WCAG AAA × Fail

If you want to check with other color combinations, try the [Color Contrast Checker](#).

RGB 255, 67, 122 Background



This preview shows how black text looks on a background with the RGB color 255, 67, 122.

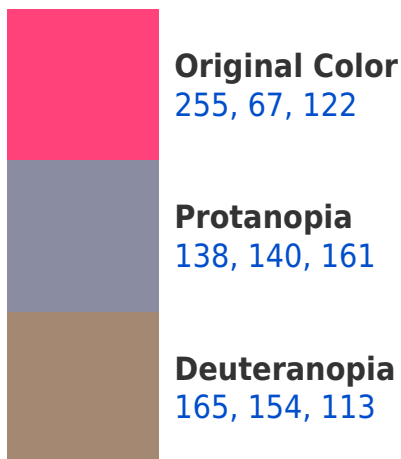


This preview shows how white text looks on a background with the RGB color 255, 67, 122.

Color Blindness Simulation

Color vision deficiency is a very complex topic, and I could not describe the different causes any better than Wikipedia does, so if you want to learn more, you should check out their [article about color blindness](#).

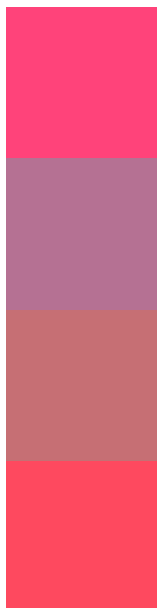
Dichromacy





Tritanopia
253, 77, 80

Trichromacy



Original Color

255, 67, 122

Protanomaly

181, 113, 147

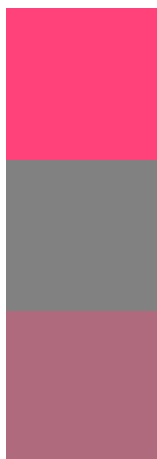
Deuteranomaly

198, 111, 116

Tritanomaly

254, 73, 95

Monochromacy



Original Color

255, 67, 122

Achromatopsia

129, 129, 129

Achromatomaly

175, 106, 126

CSS Examples

Text

The CSS property to change the color of the text to RYB 255, 67, 122 is called "color". The color property can be set on classes, ids or directly on the HTML element.

This example shows how text in the color rgb(255, 67, 122) looks like.

```
.text, #text, p{  
    color:rgb(255, 67, 122)  
}
```

If you want to add a text shadow in that color use the text-shadow property, you can generate a text shadow directly with our [CSS Text Shadow Generator](#).

Here you see how black text with a 4 pixel rgb(255, 67, 122) colored shadow looks like.

```
.shadow{ text-shadow: 4px 4px 2px rgb(255, 67, 122) }
```

Border

The CSS property to change the border of an element to RYB 255, 67, 122 is called "border". The border property can be set on classes, ids or directly on the HTML element.

This example shows the color as border, it can be applied via the CSS property "border" or "border-color".

```
.border, #border, table{ border:4px solid rgb(255, 67, 122) }
```

If only the border color should be changed use the property border-color.

```
.border{ border-color:rgb(255, 67, 122) }
```

If you want to add a box shadow in that color use:

Here you see how a box with a 4 pixel rgb(255, 67, 122) colored shadow looks like.

```
.boxshadow{ -moz-box-shadow:4px 4px 4px  
4px rgb(255, 67, 122); -webkit-box-  
shadow:4px 4px 4px 4px rgb(255, 67, 122);  
box-shadow:4px 4px 4px 4px rgb(255, 67,  
122) }
```

Background

The CSS property to change the background color of an element to RGB 255, 67, 122 is called "background". The background property can be set on classes, ids or directly on the HTML element.

```
.background, #background, body{  
background: rgb(255, 67, 122) }
```

If only the background color should be changed can be used:

```
.background{ background-color: rgb(255, 67,  
122) }
```

This example shows the color as background, it is applied via the CSS property "background".

To optimize and compress your CSS code, you can use our [online CSS compressor and optimizer](#) based on csstidy. If you want to create a linear or radial gradient as background or border, check our [CSS Gradient Generator](#).

Hey! You found this booklet interesting? Support Converting Colors with the new Membership Option!

The pro membership hides all ads, plus gives you double the colors in the color bucket, and more awesome pro features!

[Learn more, Memberships starting at \\$2.50/m!](#)

**Follow me
on Twitter!**

@ConvertingColor