

Converting Colors

`RYB(255, 86, 135)`

Have a look what the booklet for
RYB(255, 86, 135) contains.

RYB(255, 86, 135)	3
<i>Conversions</i>	4
<i>Details</i>	6
<i>Harmonies</i>	11
<i>Previews</i>	23
<i>Color Blindness Simulation</i>	26
<i>CSS Examples</i>	29

Color

R_YB(255, 86, 135)

Conversions

Conversions Part 1

Format	Color
Hex	FF5687
RGB	255, 86, 135
RGB Percent	100%, 34%, 53%
CMY	0.0000, 0.6627, 0.4706
CMYK	0.00, 0.66, 0.47, 0.00
HSL	343°, 100%, 67%
HSV	343°, 66%, 100%
XYZ	48.9410, 29.6648, 26.0681
YIQ	142.1170, 84.9950, 51.0670

Conversions

Conversions Part 2

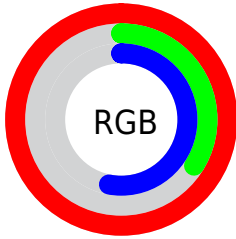
Format	Color
RYB	255, 86, 135
Decimal	16733831
CIELab	61.36, 67.29, 9.20
CIElCh	61, 67.918, 7.784
Yxy	29.6648, 0.4676, 0.2834
Android (android.graphics.Color)	4294923911 (0xFFFF5687)
YUV	142.1170, -3.5087, 98.9984
Hunter-Lab	54.4654, 65.0800, 9.7486

Details

The RYB color **255, 86, 135** is a light color, and the websafe version is hex **FF6699**. The color can be described as light muted rose. A complement of this color would be **86, 185, 255**, and the grayscale version is **142, 142, 142**.

A 20% lighter version of the original color is **255, 144, 188**, and **193, 5, 86** is the 20% darker color. If you saturate the color by 10%, you get **255, 61, 117**, and if you desaturate by 10%, it is **255, 112, 153**.

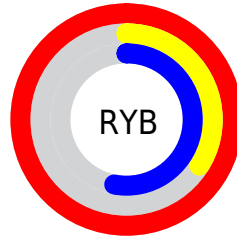
Distribution



Red (100%)

Green (34%)

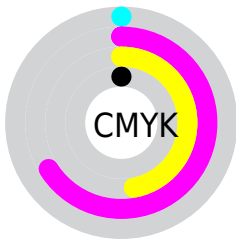
Blue (53%)



Red (100%)

Yellow (34%)

Blue (53%)

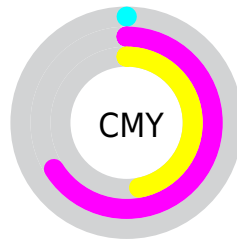


Cyan (0%)

Magenta (66%)

Yellow (47%)

Black (0%)



Cyan (0%)

Magenta (66%)

Yellow (47%)

Brightness & Saturation Gradients


These gradients show how the RYB color 255, 86, 135 changes by changing the brightness by 10 percent. The first figure shows a shift by +10% for each color and the second figure -10%.

Similar to the brightness gradients but the following saturation gradients show a change of the RYB color 255, 86, 135 by changing the saturation by 10% instead.

 255, 86, 135

 255, 86, 135

255, 255, 255

 224, 54, 110

 255, 144, 188

 193, 5, 86

 255, 174, 216

 162, 0, 63

 255, 203, 244

 132, 0, 41

 255, 233, 255

 102, 0, 21

 74, 0, 3

 43, 0, 1

 0, 0, 0

 255, 86, 135

 255, 86, 135

■ 255, 61, 117

■ 255, 112, 153

■ 255, 35, 99

■ 255, 137, 171

■ 255, 10, 81

■ 255, 163, 189

■ 255, 0, 74

■ 255, 188, 207

■ 255, 214, 226

■ 255, 239, 244

255, 255, 255

Harmonies

Analogous

The Analogous color harmony consists of three colors that are next to each other on the color wheel.



232, 97, 195



255, 86, 135



246, 106, 78

Triad

The Triadic color harmony groups three colors that are evenly spaced from another and form a triangle on the color wheel.



255, 86, 135



42, 165, 109



0, 101, 255

Complementary

The Complementary color scheme is a pair of colors which are on the opposite of each other on the color wheel.



255, 86, 135



86, 185, 255

Split Complementary

Split-complementary colors differ from the complementary color scheme. The scheme consists of three colors, the original color and two neighbors of the complement color.



0, 97, 221



255, 86, 135



0, 110, 173

Square

The Square scheme is like the rectangle color scheme, but the four colors are evenly spaced on the color wheel.



255, 86, 135



14, 163, 0



0, 91, 176



0, 94, 255

Rectangle

The Rectangle color scheme consists of four colors that form a rectangle on the color wheel.



255, 86, 135



226, 176, 43



0, 91, 176



0, 101, 249

Sweetspot

The Sweet Spot groups the original color and five complimentary colors.



255, 86, 135



255, 204, 219



204, 86, 255



128, 97, 106



0, 0, 0



128, 128, 128

Same Dimension

The Same Dimension uses a secret algorithm to generate beautiful new colors.



255, 86, 135



255, 51, 110



255, 129, 86



128, 115, 118



191, 0, 55



64, 0, 18

Inverse Universe

The Inverse Universe completely reimagines the original color for something new.



255, 86, 135



255, 51, 110



86, 161, 255



128, 115, 118



191, 0, 55



64, 0, 18

Previews

White Background



This preview shows how the RYB color 255, 86, 135 looks on a white background.

Color Contrast Check

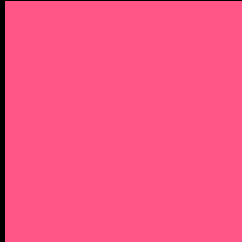
Large Text (above 18pt) WCAG AA ✓ Pass

Any Text WCAG AA ✗ Fail

Large Text (above 18pt) WCAG AAA ✗ Fail

Any Text WCAG AAA ✗ Fail

Black Background



This preview shows how the RYB color 255, 86, 135 looks on a black background.

Color Contrast Check

Large Text (above 18pt) WCAG AA ✓ Pass

Any Text WCAG AA ✓ Pass

Large Text (above 18pt) WCAG AAA ✓ Pass

Any Text WCAG AAA × Fail

If you want to check with other color combinations, try the [Color Contrast Checker](#).

RYB 255, 86, 135 Background



This preview shows how black text looks on a background with the RYB color 255, 86, 135.

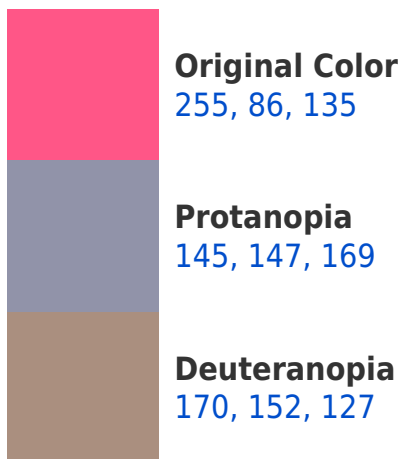


This preview shows how white text looks on a background with the RYB color 255, 86, 135.

Color Blindness Simulation

Color vision deficiency is a very complex topic, and I could not describe the different causes any better than Wikipedia does, so if you want to learn more, you should check out their [article about color blindness](#).

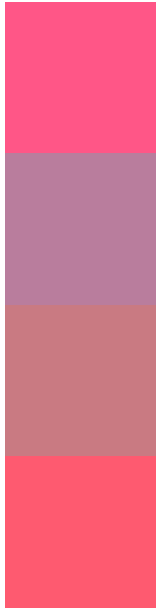
Dichromacy





Tritanopia
253, 93, 99

Trichromacy



Original Color
255, 86, 135

Protanomaly
185, 125, 157

Deuteranomaly
201, 122, 130

Tritanomaly
254, 90, 112

Monochromacy



Original Color
255, 86, 135

Achromatopsia
142, 142, 142

Achromatomaly
183, 122, 139

CSS Examples

Text

The CSS property to change the color of the text to RYB 255, 86, 135 is called "color". The color property can be set on classes, ids or directly on the HTML element.

This example shows how text in the color rgb(255, 86, 135) looks like.

```
.text, #text, p{  
    color:rgb(255, 86, 135)  
}
```

If you want to add a text shadow in that color use the text-shadow property, you can generate a text shadow directly with our [CSS Text Shadow Generator](#).

Here you see how black text with a 4 pixel rgb(255, 86, 135) colored shadow looks like.

```
.shadow{ text-shadow: 4px 4px 2px rgb(255, 86, 135) }
```

Border

The CSS property to change the border of an element to RYB 255, 86, 135 is called "border". The border property can be set on classes, ids or directly on the HTML element.

This example shows the color as border, it can be applied via the CSS property "border" or "border-color".

```
.border, #border, table{ border:4px solid rgb(255, 86, 135) }
```

If only the border color should be changed use the property `border-color`.

```
.border{ border-color:rgb(255, 86, 135) }
```

If you want to add a box shadow in that color use:

Here you see how a box with a 4 pixel `rgb(255, 86, 135)` colored shadow looks like.

```
.boxshadow{ -moz-box-shadow:4px 4px 4px  
4px rgb(255, 86, 135); -webkit-box-  
shadow:4px 4px 4px 4px rgb(255, 86, 135);  
box-shadow:4px 4px 4px 4px rgb(255, 86,  
135) }
```

Background

The CSS property to change the background color of an element to RGB 255, 86, 135 is called "background". The background property can be set on classes, ids or directly on the HTML element.

```
.background, #background, body{  
background: rgb(255, 86, 135) }
```

If only the background color should be changed can be used:

```
.background{ background-color: rgb(255, 86,  
135) }
```

This example shows the color as background, it is applied via the CSS property "background".

To optimize and compress your CSS code, you can use our [online CSS compressor and optimizer](#) based on csstidy. If you want to create a linear or radial gradient as background or border, check our [CSS Gradient Generator](#).

Hey! You found this booklet interesting? Support Converting Colors with the new Membership Option!

The pro membership hides all ads, plus gives you double the colors in the color bucket, and more awesome pro features!

[Learn more, Memberships starting at \\$2.50/m!](#)

**Follow me
on Twitter!**

@ConvertingColor