

Converting Colors

`RYB(87, 74, 66)`

Have a look what the booklet for
RYB(87, 74, 66) contains.

RYB(87, 74, 66)	3
<i>Conversions</i>	4
<i>Details</i>	6
<i>Harmonies</i>	11
<i>Previews</i>	23
<i>Color Blindness Simulation</i>	26
<i>CSS Examples</i>	29

Color

`RYB(87, 74, 66)`

Conversions

Conversions Part 1	
Format	Color
Hex	574842
RGB	87, 72, 66
RGB Percent	34%, 28%, 26%
CMY	0.6588, 0.7185, 0.7412
CMYK	0.00, 0.17, 0.24, 0.66
HSL	17°, 14%, 30%
HSV	17°, 24%, 34%
XYZ	7.2179, 7.0276, 6.1303
YIQ	75.8010, 10.8660, 1.3140

Conversions

Conversions Part 2

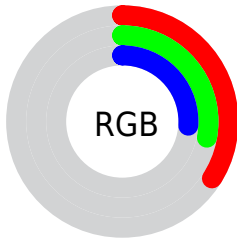
Format	Color
RYB	87, 74, 66
Decimal	5720130
CIELab	31.87, 5.40, 5.88
CIELCh	32, 7.983, 47.431
Yxy	7.0276, 0.3542, 0.3449
Android (android.graphics.Color)	4283910210 (0xFF574842)
YUV	75.8010, -4.8319, 9.8215
Hunter-Lab	26.5096, 2.2089, 4.8461

Details

The RYB color **87, 74, 66** is a dark color, and the websafe version is hex **333333**. A complement of this color would be **66, 75, 87**, and the grayscale version is **76, 76, 76**.

A 20% lighter version of the original color is **137, 122, 114**, and **41, 32, 23** is the 20% darker color. If you saturate the color by 10%, you get **87, 68, 57**, and if you desaturate by 10%, it is **87, 79, 75**.

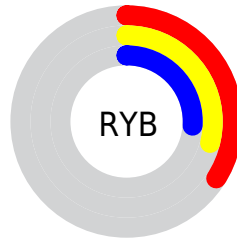
Distribution



Red (34%)

Green (28%)

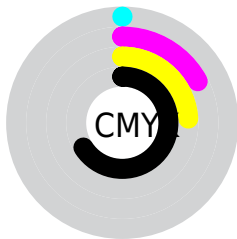
Blue (26%)



Red (34%)

Yellow (29%)

Blue (26%)

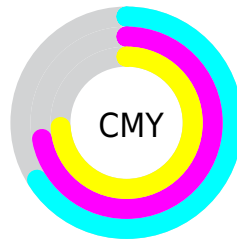


Cyan (0%)

Magenta (17%)

Yellow (24%)

Black (66%)



Cyan (66%)

Magenta (72%)

Yellow (74%)

Brightness & Saturation Gradients


These gradients show how the RYB color 87, 74, 66 changes by changing the brightness by 10 percent. The first figure shows a shift by +10% for each color and the second figure -10%.

Similar to the brightness gradients but the following saturation gradients show a change of the RYB color 87, 74, 66 by changing the saturation by 10% instead.


 87, 74, 66


 87, 74, 66

255, 255, 255

 63, 51, 44


 137, 122, 114

 41, 30, 23

 164, 149, 139

 21, 2, 0

 191, 174, 166

 0, 0, 0

 219, 203, 193

 247, 231, 221

 249, 255, 249

 87, 74, 66

 87, 74, 66

 87, 68, 57

 87, 79, 75

 87, 63, 49

 87, 84, 83

 87, 58, 40

 87, 89, 92


 87, 53, 31

 87, 93, 101


 87, 47, 22

 87, 96, 110


 87, 42, 14


 87, 100, 118

 87, 37, 5

 87, 104, 127

 87, 33, 0

 87, 107, 136

 87, 111, 144

Harmonies

Analogous

The Analogous color harmony consists of three colors that are next to each other on the color wheel.



88, 71, 71



87, 74, 66



79, 83, 63

Triad

The Triadic color harmony groups three colors that are evenly spaced from another and form a triangle on the color wheel.



87, 74, 66



63, 72, 78



73, 74, 87

Complementary

The Complementary color scheme is a pair of colors which are on the opposite of each other on the color wheel.



87, 74, 66



66, 75, 87

Split Complementary

Split-complementary colors differ from the complementary color scheme. The scheme consists of three colors, the original color and two neighbors of the complement color.



65, 72, 87



87, 74, 66



59, 69, 79

Square

The Square scheme is like the rectangle color scheme, but the four colors are evenly spaced on the color wheel.



87, 74, 66



66, 77, 74



60, 70, 84



81, 72, 83

Rectangle

The Rectangle color scheme consists of four colors that form a rectangle on the color wheel.



87, 74, 66



67, 78, 63



60, 70, 84



70, 74, 87

Sweetspot

The Sweet Spot groups the original color and five complimentary colors.



87, 74, 66



112, 109, 104



87, 66, 81



56, 53, 52



184, 184, 184



56, 56, 56

Same Dimension

The Same Dimension uses a secret algorithm to generate beautiful new colors.



87, 74, 66



112, 93, 80



73, 87, 66



43, 40, 39



107, 42, 0



235, 90, 0

Inverse Universe

The Inverse Universe completely reimagines the original color for something new.



66, 75, 87



80, 93, 112



66, 70, 87



39, 41, 43



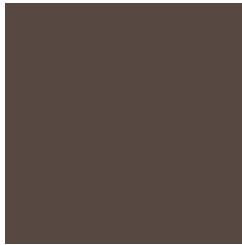
0, 45, 107



0, 99, 235

Previews

White Background



This preview shows how the RYB color 87, 74, 66 looks on a white background.

Color Contrast Check

Large Text (above 18pt) WCAG AA ✓ Pass

Any Text WCAG AA ✓ Pass

Large Text (above 18pt) WCAG AAA ✓ Pass

Any Text WCAG AAA ✓ Pass

Black Background



This preview shows how the RYB color 87, 74, 66 looks on a black background.

Color Contrast Check

Large Text (above 18pt) WCAG AA × Fail

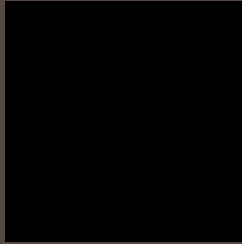
Any Text WCAG AA × Fail

Large Text (above 18pt) WCAG AAA × Fail

Any Text WCAG AAA × Fail

If you want to check with other color combinations, try the [Color Contrast Checker](#).

RYB 87, 74, 66 Background



This preview shows how black text looks on a background with the RYB color 87, 74, 66.

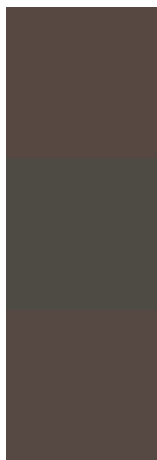


This preview shows how white text looks on a background with the RYB color 87, 74, 66.

Color Blindness Simulation

Color vision deficiency is a very complex topic, and I could not describe the different causes any better than Wikipedia does, so if you want to learn more, you should check out their [article about color blindness](#).

Dichromacy



Original Color

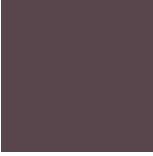
[87](#), [74](#), [66](#)

Protanopia

[72](#), [78](#), [68](#)

Deuteranopia

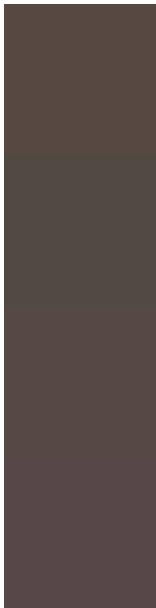
[86](#), [75](#), [66](#)



Tritanopia

88, 70, 76

Trichromacy



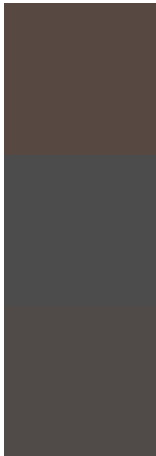
Original Color
87, 74, 66

Protanomaly
81, 81, 67

Deuteranomaly
86, 75, 66

Tritanomaly
88, 71, 72

Monochromacy



Original Color
87, 74, 66

Achromatopsia
76, 76, 76

Achromatomaly
80, 75, 72

CSS Examples

Text

The CSS property to change the color of the text to RGB 87, 74, 66 is called "color". The color property can be set on classes, ids or directly on the HTML element.

This example shows how text in the color rgb(87, 72, 66) looks like.

```
.text, #text, p{  
    color:rgb(87, 72, 66)  
}
```

If you want to add a text shadow in that color use the text-shadow property, you can generate a text shadow directly with our [CSS Text Shadow Generator](#).

Here you see how black text with a 4 pixel rgb(87, 72, 66) colored shadow looks like.

```
.shadow{ text-shadow: 4px 4px 2px rgb(87, 72, 66) }
```

Border

The CSS property to change the border of an element to RYB 87, 74, 66 is called "border". The border property can be set on classes, ids or directly on the HTML element.

This example shows the color as border, it can be applied via the CSS property "border" or "border-color".

```
.border, #border, table{ border:4px solid rgb(87, 72, 66) }
```

If only the border color should be changed use the property `border-color`.

```
.border{ border-color:rgb(87, 72, 66) }
```

If you want to add a box shadow in that color use:

Here you see how a box with a 4 pixel `rgb(87, 72, 66)` colored shadow looks like.

```
.boxshadow{ -moz-box-shadow:4px 4px 4px  
4px rgb(87, 72, 66); -webkit-box-  
shadow:4px 4px 4px 4px rgb(87, 72, 66);  
box-shadow:4px 4px 4px 4px rgb(87, 72, 66)  
}
```

Background

The CSS property to change the background color of an element to RGB 87, 74, 66 is called "background". The background property can be set on classes, ids or directly on the HTML element.

```
.background, #background, body{  
background: rgb(87, 72, 66) }
```

If only the background color should be changed can be used:

```
.background{ background-color: rgb(87, 72,  
66) }
```

This example shows the color as background, it is applied via the CSS property "background".

To optimize and compress your CSS code, you can use our [online CSS compressor and optimizer](#) based on csstidy. If you want to create a linear or radial gradient as background or border, check our [CSS Gradient Generator](#).

Hey! You found this booklet
interesting? Support Converting
Colors with the new Membership
Option!

The pro membership hides all ads, plus gives you
double the colors in the color bucket, and more
awesome pro features!

[Learn more, Memberships starting at \\$2.50/m!](#)

**Follow me
on Twitter!**

@ConvertingColor