

Converting Colors

XYZ(10.3316, 9.4081, 10.1723)

Have a look what the booklet for
XYZ(10.3316, 9.4081, 10.1723)
contains.

XYZ(10.2573, 9.3523, 10.0686)	3
<i>Conversions</i>	4
<i>Details</i>	6
<i>Harmonies</i>	12
<i>Previews</i>	24
<i>Color Blindness Simulation</i>	28
<i>CSS Examples</i>	31

Color

**XYZ(10.2573, 9.3523,
10.0686)**

Conversions

Conversions Part 1

Format	Color
Hex	685056
RGB	104, 80, 86
RGB Percent	41%, 31%, 34%
CMY	0.5922, 0.6863, 0.6627
CMYK	0.00, 0.23, 0.17, 0.59
HSL	345°, 13%, 36%
HSV	345°, 23%, 41%
XYZ	10.2573, 9.3523, 10.0686
YIQ	87.8600, 12.3780, 6.9540

Conversions

Conversions Part 2

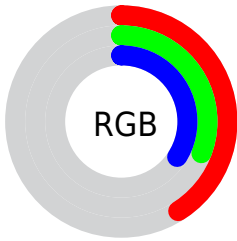
Format	Color
R_{YB}	104, 80, 86
Decimal	6836310
CIE Lab	36.65, 11.09, 0.34
CIE LCh	37, 11.099, 1.763
Yxy	9.3523, 0.3456, 0.3151
Android (android.graphics.Color)	4285026390 (0xFF685056)
YUV	87.8600, -0.9170, 14.1548
Hunter-Lab	30.5815, 6.3527, 1.8866

Details

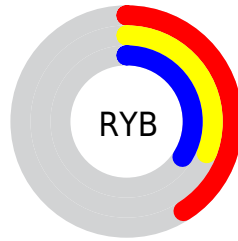
The XYZ color **10.2573, 9.3523, 10.0686** is a dark color, and the websafe version is hex **666666**. A complement of this color would be **10.4636, 12.4882, 13.4150**, and the grayscale version is **9.2456, 9.7271, 10.5928**.

A 20% lighter version of the original color is **25.8118, 24.4466, 26.6508**, and **2.6322, 2.2029, 2.3843** is the 20% darker color. If you saturate the color by 10%, you get **9.2567, 7.8268, 8.2681**, and if you desaturate by 10%, it is **11.4107, 11.1282, 12.0895**.

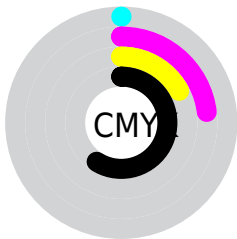
Distribution



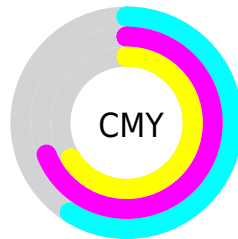
- Red (41%)
- Green (31%)
- Blue (34%)



- Red (41%)
- Yellow (31%)
- Blue (34%)



- Cyan (0%)
- Magenta (23%)
- Yellow (17%)
- Black (59%)



- Cyan (59%)
- Magenta (69%)
- Yellow (66%)

Brightness & Saturation Gradients

These gradients show how the XYZ color 10.2573, 9.3523, 10.0686 changes by changing the brightness by 10 percent. The first figure shows a shift by +10% for each color and the second figure -10%.

Similar to the brightness gradients but the following saturation gradients show a change of the XYZ color 10.2573, 9.3523, 10.0686 by changing the saturation by 10% instead.

■ 10.2573, 9.3523,
10.0686

■ 10.2573, 9.3523,
10.0686

186.5142,
185.9847, 201.6636

■ 5.6335, 4.9717,
5.3383

■ 25.9236, 24.5699,
26.5343

■ 2.6620, 2.2307,
2.3849

■ 37.6969, 36.1757,
39.1067

■ 0.9777, 0.7366,
0.7782

■ 52.5839, 50.9586,
55.1303

■ 0.0000, 0.0000,
0.0000

■ 70.9502, 69.3031,
75.0234

■ 93.1610, 91.5936,
99.2048

119.5817,

118.2144, 128.0930

150.5776,
149.5500, 162.1063

■ 10.2573, 9.3523,
10.0686

■ 10.2573, 9.3523,
10.0686

■ 9.2567, 7.8268,
8.2681

■ 11.4107, 11.1282,
12.0895

■ 8.4015, 6.5392,
6.6799

■ 12.7221, 13.1637,
14.3375

■ 7.6850, 5.4776,
5.2961

■ 14.1976, 15.4691,
16.8195

■ 7.0997, 4.6291,
4.1083

■ 15.8427, 18.0540,
19.5423

■ 6.6373, 3.9789,
3.1071

■ 17.6626, 20.9272,
22.5121

■ 6.2883, 3.5107,
2.2826

■ 19.6623, 24.0974,
25.7349

■ 6.0397, 3.2005,
1.6232

■ 21.8465, 27.5726,
29.2167

■ 5.8953, 3.0176,
1.2485

■ 24.2199, 31.3607,
32.9630

■ 26.7869, 35.4695,
36.9795

Harmonies

Analogous

The Analogous color harmony consists of three colors that are next to each other on the color wheel.



10.0882, 9.3523, 12.0543



10.2573, 9.3523, 10.0686



10.0446, 9.3523, 8.3409

Triad

The Triadic color harmony groups three colors that are evenly spaced from another and form a triangle on the color wheel.



10.2573, 9.3523, 10.0686



8.2201, 9.3523, 7.3262



8.2863, 9.3523, 13.8405

Complementary

The Complementary color scheme is a pair of colors which are on the opposite of each other on the color wheel.



10.2573, 9.3523, 10.0686



10.4636, 12.4882, 13.4150

Split Complementary

Split-complementary colors differ from the complementary color scheme. The scheme consists of three colors, the original color and two neighbors of the complement color.



7.8258, 9.3523, 12.2783



10.2573, 9.3523, 10.0686



7.7890, 9.3523, 8.5163

Square

The Square scheme is like the rectangle color scheme, but the four colors are evenly spaced on the color wheel.



10.2573, 9.3523, 10.0686



8.8490, 9.3523, 6.8876



7.6483, 9.3523, 10.2984



8.9293, 9.3523, 14.3909

Rectangle

The Rectangle color scheme consists of four colors that form a rectangle on the color wheel.



10.2573, 9.3523, 10.0686



9.7209, 9.3523, 7.5222



7.6483, 9.3523, 10.2984



8.1061, 9.3523, 13.4073

Sweetspot

The Sweet Spot groups the original color and five complimentary colors.



10.2576, 9.3527, 10.0688



21.3369, 21.5657, 23.4787



10.4047, 9.3340, 14.3500



5.1861, 5.2311, 5.6948



52.6788, 55.4222, 60.3547



5.6320, 5.9254, 6.4527

Same Dimension

The Same Dimension uses a secret algorithm to generate beautiful new colors.



10.2576, 9.3527, 10.0688



16.9605, 14.8264, 15.8131



10.4850, 10.1783, 9.0020



2.8550, 2.8566, 3.1087



7.2552, 3.7150, 1.4763



37.5339, 19.2535, 6.0886

Inverse Universe

The Inverse Universe completely reimagines the original color for something new.



10.2576, 9.3527, 10.0688



16.9605, 14.8264, 15.8131



10.1750, 11.4406, 14.7688



2.8550, 2.8566, 3.1087



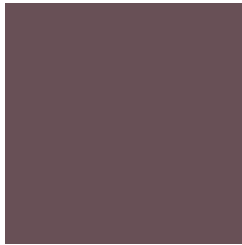
7.2552, 3.7150, 1.4763



37.5339, 19.2535, 6.0886

Previews

White Background



This preview shows how the XYZ color 10.2573, 9.3523, 10.0686 looks on a white background.

Color Contrast Check

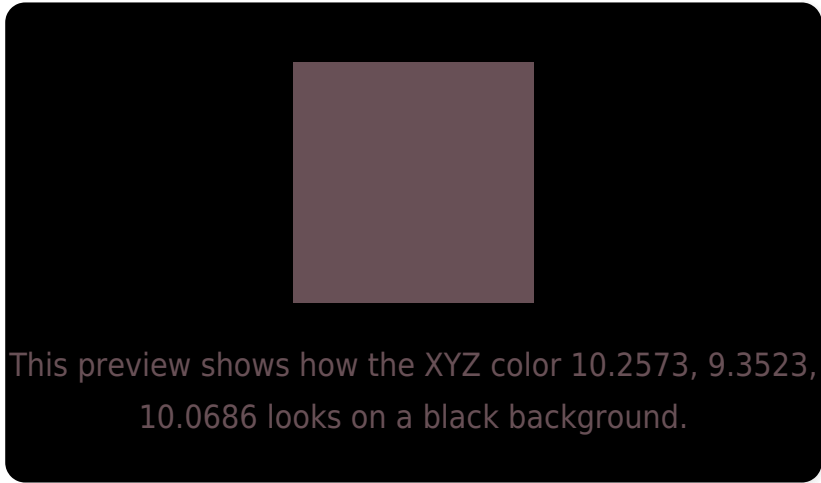
Large Text (above 18pt) WCAG AA ✓ Pass

Any Text WCAG AA ✓ Pass

Large Text (above 18pt) WCAG AAA ✓ Pass

Any Text WCAG AAA ✓ Pass

Black Background



Color Contrast Check

Large Text (above 18pt) WCAG AA × Fail

Any Text WCAG AA × Fail

Large Text (above 18pt) WCAG AAA × Fail

Any Text WCAG AAA × Fail

If you want to check with other color combinations, try the [Color Contrast Checker](#).

XYZ 10.2573, 9.3523, 10.0686

Background



This preview shows how black text looks on a background with the XYZ color 10.2573, 9.3523, 10.0686.



This preview shows how white text looks on a background with the XYZ color 10.2573, 9.3523,

Color Blindness Simulation

Color vision deficiency is a very complex topic, and I could not describe the different causes any better than Wikipedia does, so if you want to learn more, you should check out their [article about color blindness](#).

Dichromacy



Original Color

10.2573, 9.3523, 10.0686

Protanopia

9.0614, 9.4031, 10.7886

Deuteranopia

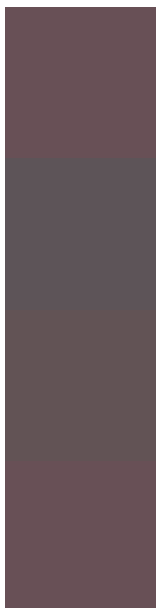
9.5293, 9.4294, 9.9121



Tritanopia

10.2573, 9.3523, 10.0686

Trichromacy



Original Color

10.2573, 9.3523, 10.0686

Protanomaly

9.4460, 9.3724, 10.5437

Deuteranomaly

9.7700, 9.4391, 9.9013

Tritanomaly

10.2573, 9.3523, 10.0686

Monochromacy



Original Color

10.2573, 9.3523, 10.0686

Achromatopsia

9.2757, 9.7587, 10.6273

Achromatomaly

9.5849, 9.5648, 10.3578

CSS Examples

Text

The CSS property to change the color of the text to XYZ 10.2573, 9.3523, 10.0686 is called "color". The color property can be set on classes, ids or directly on the HTML element.

This example shows how text in the color `rgb(104, 80, 86)` looks like.

```
.text, #text, p{  
    color:rgb(104, 80, 86)  
}
```

If you want to add a text shadow in that color use the text-shadow property, you can generate a text shadow directly with our [CSS Text Shadow Generator](#).

Here you see how black text with a 4 pixel rgb(104, 80, 86) colored shadow looks like.

```
.shadow{ text-shadow: 4px 4px 2px rgb(104, 80, 86) }
```

Border

The CSS property to change the border of an element to XYZ 10.2573, 9.3523, 10.0686 is called "border". The border property can be set on classes, ids or directly on the HTML element.

This example shows the color as border, it can be applied via the CSS property "border" or "border-color".

```
.border, #border, table{ border:4px solid rgb(104, 80, 86) }
```


If only the border color should be changed use the property border-color.

```
.border{ border-color:rgb(104, 80, 86) }
```

If you want to add a box shadow in that color use:

Here you see how a box with a 4 pixel rgb(104, 80, 86) colored shadow looks like.

```
.boxshadow{ -moz-box-shadow:4px 4px 4px  
4px rgb(104, 80, 86); -webkit-box-  
shadow:4px 4px 4px 4px rgb(104, 80, 86);  
box-shadow:4px 4px 4px 4px rgb(104, 80,  
86) }
```

Background

The CSS property to change the background color of an element to XYZ 10.2573, 9.3523, 10.0686 is called "background". The background property can be set on classes, ids or directly on the HTML element.

```
.background, #background, body{  
background: rgb(104, 80, 86) }
```

If only the background color should be changed can be used:

```
.background{ background-color: rgb(104, 80,  
86) }
```

This example shows the color as background, it is applied via the CSS property "background".

To optimize and compress your CSS code, you can use our [online CSS compressor and optimizer](#) based on csstidy. If you want to create a linear or radial gradient as background or border, check our [CSS Gradient Generator](#).

Hey! You found this booklet interesting? Support Converting Colors with the new Membership Option!

The pro membership hides all ads, plus gives you double the colors in the color bucket, and more awesome pro features!

[Learn more, Memberships starting at \\$2.50/m!](#)

**Follow me
on Twitter!**

@ConvertingColor