

Converting Colors

XYZ(10.5083, 9.2629, 10.2510)

Have a look what the booklet for
XYZ(10.5083, 9.2629, 10.2510)
contains.

XYZ(10.5081, 9.2627, 10.2509)	3
<i>Conversions</i>	4
<i>Details</i>	6
<i>Harmonies</i>	12
<i>Previews</i>	24
<i>Color Blindness Simulation</i>	28
<i>CSS Examples</i>	31

Color

**XYZ(10.5081, 9.2627,
10.2509)**

Conversions

Conversions Part 1

Format	Color
Hex	6B4E57
RGB	107, 78, 87
RGB Percent	42%, 31%, 34%
CMY	0.5804, 0.6941, 0.6588
CMYK	0.00, 0.27, 0.19, 0.58
HSL	341°, 16%, 36%
HSV	341°, 27%, 42%
XYZ	10.5081, 9.2627, 10.2509
YIQ	87.6970, 14.3950, 8.9470

Conversions

Conversions Part 2

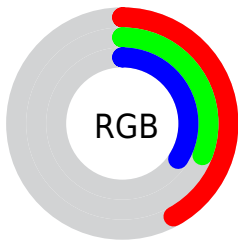
Format	Color
R_{YB}	107, 78, 87
Decimal	7032407
CIE _{Lab}	36.49, 13.75, -0.49
CIE _{LCh}	36, 13.754, 357.950
Yxy	9.2627, 0.3500, 0.3085
Android (android.graphics.Color)	4285222487 (0xFF6B4E57)
YUV	87.6970, -0.3436, 16.9287
Hunter-Lab	30.4347, 8.3695, 1.3344

Details

The XYZ color **10.5081, 9.2627, 10.2509** is a dark color, and the websafe version is hex **666666**. A complement of this color would be **10.6046, 13.0172, 13.5095**, and the grayscale version is **9.2086, 9.6881, 10.5504**.

A 20% lighter version of the original color is **26.4028, 24.3558, 26.9765**, and **2.7654, 2.1847, 2.4664** is the 20% darker color. If you saturate the color by 10%, you get **9.5226, 7.7498, 8.5102**, and if you desaturate by 10%, it is **11.6486, 11.0362, 12.1957**.

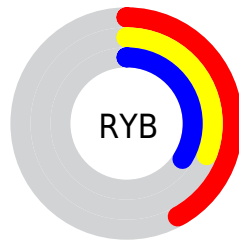
Distribution



Red (42%)

Green (31%)

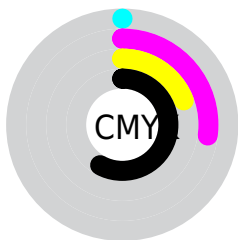
Blue (34%)



Red (42%)

Yellow (31%)

Blue (34%)

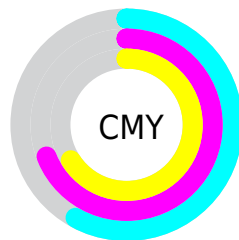


Cyan (0%)

Magenta (27%)

Yellow (19%)

Black (58%)



Cyan (58%)

Magenta (69%)

Yellow (66%)

Brightness & Saturation Gradients

These gradients show how the XYZ color 10.5081, 9.2627, 10.2509 changes by changing the brightness by 10 percent. The first figure shows a shift by +10% for each color and the second figure -10%.

Similar to the brightness gradients but the following saturation gradients show a change of the XYZ color 10.5081, 9.2627, 10.2509 by changing the saturation by 10% instead.

■ 10.5081, 9.2627,
10.2509

■ 10.5081, 9.2627,
10.2509

188.2398,
185.3257, 203.0030

■ 5.8020, 4.9129,
5.4579

■ 26.3880, 24.3992,
26.8815

■ 2.7645, 2.1963,
2.4549

■ 38.2925, 35.9546,
39.5562

■ 1.0305, 0.7180,
0.8161

■ 53.3271, 50.6808,
55.6951

■ 0.0000, 0.0000,
0.0000

■ 71.8572, 68.9620,
75.7169

■ 94.2482, 91.1827,
100.0400

120.8654,

117.7273, 129.0830

152.0741,
148.9802, 163.2645

■ 10.5081, 9.2627,
10.2509

■ 10.5081, 9.2627,
10.2509

■ 9.5226, 7.7498,
8.5102

■ 11.6486, 11.0362,
12.1957

■ 8.6846, 6.4840,
6.9660

■ 12.9499, 13.0806,
14.3504

■ 7.9868, 5.4523,
5.6114

■ 14.4184, 15.4070,
16.7215

■ 7.4210, 4.6401,
4.4387

■ 16.0596, 18.0258,
19.3149

■ 6.9785, 4.0312,
3.4394

■ 17.8792, 20.9466,
22.1363

■ 6.6488, 3.6070,
2.6046

■ 19.8824, 24.1786,
25.1912

■ 6.4056, 3.3166,
1.9194

■ 22.0742, 27.7307,
28.4849

■ 6.3408, 3.2368,
1.7443

■ 24.4593, 31.6114,
32.0226

■ 27.0426, 35.8289,
35.8091

Harmonies

Analogous

The Analogous color harmony consists of three colors that are next to each other on the color wheel.



10.2363, 9.2627, 12.7280



10.5081, 9.2627, 10.2509



10.2999, 9.2627, 8.0800

Triad

The Triadic color harmony groups three colors that are evenly spaced from another and form a triangle on the color wheel.



10.5081, 9.2627, 10.2509



8.0725, 9.2627, 6.5442



7.9790, 9.2627, 14.5070

Complementary

The Complementary color scheme is a pair of colors which are on the opposite of each other on the color wheel.



10.5081, 9.2627, 10.2509



10.6046, 13.0172, 13.5095

Split Complementary

Split-complementary colors differ from the complementary color scheme. The scheme consists of three colors, the original color and two neighbors of the complement color.



7.4603, 9.2627, 12.3981



10.5081, 9.2627, 10.2509



7.5118, 9.2627, 7.8367

Square

The Square scheme is like the rectangle color scheme, but the four colors are evenly spaced on the color wheel.



10.5081, 9.2627, 10.2509



8.8615, 9.2627, 6.1525



7.2947, 9.2627, 9.9219



8.7466, 9.2627, 15.4147

Rectangle

The Rectangle color scheme consists of four colors that form a rectangle on the color wheel.



10.5081, 9.2627, 10.2509



9.9238, 9.2627, 7.0416



7.2947, 9.2627, 9.9219



7.7716, 9.2627, 13.9002

Sweetspot

The Sweet Spot groups the original color and five complimentary colors.



10.5084, 9.2631, 10.2511



22.9116, 22.9856, 25.2429



10.3958, 9.0973, 15.1180



5.4735, 5.4499, 5.9915



54.2243, 57.0482, 62.1254



6.0569, 6.3724, 6.9395

Same Dimension

The Same Dimension uses a secret algorithm to generate beautiful new colors.



10.5084, 9.2631, 10.2511



17.5815, 14.6865, 16.1875



10.5564, 9.9114, 8.5649



3.1349, 3.1308, 3.4405



7.7011, 3.9325, 2.0543



38.8896, 19.8978, 8.6214

Inverse Universe

The Inverse Universe completely reimagines the original color for something new.



10.5084, 9.2631, 10.2511



17.5815, 14.6865, 16.1875



10.5164, 12.1221, 15.6955



3.1349, 3.1308, 3.4405



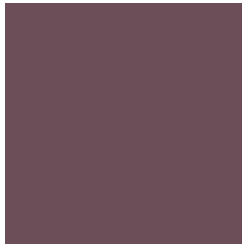
7.7011, 3.9325, 2.0543



38.8896, 19.8978, 8.6214

Previews

White Background



This preview shows how the XYZ color 10.5081, 9.2627, 10.2509 looks on a white background.

Color Contrast Check

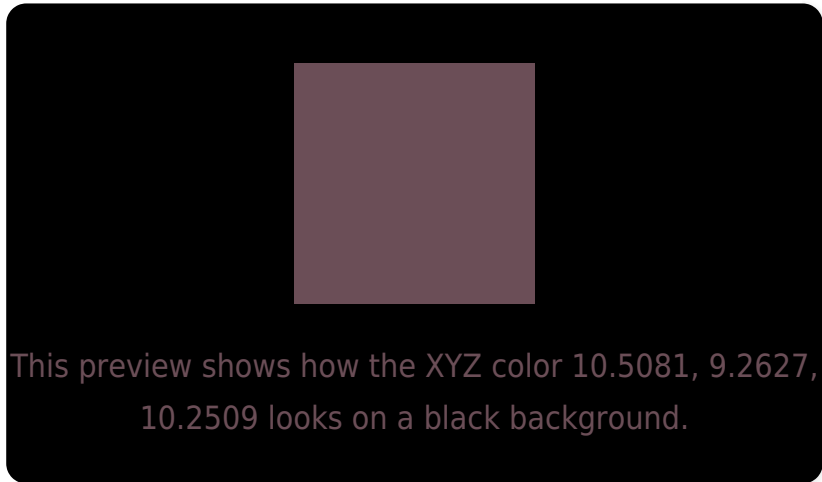
Large Text (above 18pt) WCAG AA ✓ Pass

Any Text WCAG AA ✓ Pass

Large Text (above 18pt) WCAG AAA ✓ Pass

Any Text WCAG AAA ✓ Pass

Black Background



Color Contrast Check

Large Text (above 18pt) WCAG AA × Fail

Any Text WCAG AA × Fail

Large Text (above 18pt) WCAG AAA × Fail

Any Text WCAG AAA × Fail

If you want to check with other color combinations, try the [Color Contrast Checker](#).

XYZ 10.5081, 9.2627, 10.2509

Background



This preview shows how black text looks on a background with the XYZ color 10.5081, 9.2627, 10.2509.



This preview shows how white text looks on a background with the XYZ color 10.5081, 9.2627,

Color Blindness Simulation

Color vision deficiency is a very complex topic, and I could not describe the different causes any better than Wikipedia does, so if you want to learn more, you should check out their [article about color blindness](#).

Dichromacy



Original Color

10.5081, 9.2627, 10.2509

Protanopia

9.0539, 9.3893, 11.2327

Deuteranopia

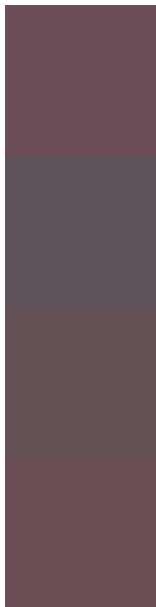
9.3891, 9.2381, 10.0924



Tritanopia

10.3880, 9.2147, 9.6186

Trichromacy



Original Color

10.5081, 9.2627, 10.2509

Protanomaly

9.5548, 9.3044, 10.9652

Deuteranomaly

9.7677, 9.2094, 10.0669

Tritanomaly

10.4275, 9.2305, 9.8264

Monochromacy



Original Color

10.5081, 9.2627, 10.2509

Achromatopsia

9.2757, 9.7587, 10.6273

Achromatomaly

9.6511, 9.4781, 10.5533

CSS Examples

Text

The CSS property to change the color of the text to XYZ 10.5081, 9.2627, 10.2509 is called "color". The color property can be set on classes, ids or directly on the HTML element.

This example shows how text in the color `rgb(107, 78, 87)` looks like.

```
.text, #text, p{  
    color:rgb(107, 78, 87)  
}
```

If you want to add a text shadow in that color use the text-shadow property, you can generate a text shadow directly with our [CSS Text Shadow Generator](#).

Here you see how black text with a 4 pixel rgb(107, 78, 87) colored shadow looks like.

```
.shadow{ text-shadow: 4px 4px 2px rgb(107, 78, 87) }
```

Border

The CSS property to change the border of an element to XYZ 10.5081, 9.2627, 10.2509 is called "border". The border property can be set on classes, ids or directly on the HTML element.

This example shows the color as border, it can be applied via the CSS property "border" or "border-color".

```
.border, #border, table{ border:4px solid rgb(107, 78, 87) }
```


If only the border color should be changed use the property border-color.

```
.border{ border-color:rgb(107, 78, 87) }
```

If you want to add a box shadow in that color use:

Here you see how a box with a 4 pixel rgb(107, 78, 87) colored shadow looks like.

```
.boxshadow{ -moz-box-shadow:4px 4px 4px  
4px rgb(107, 78, 87); -webkit-box-  
shadow:4px 4px 4px 4px rgb(107, 78, 87);  
box-shadow:4px 4px 4px 4px rgb(107, 78,  
87) }
```

Background

The CSS property to change the background color of an element to XYZ 10.5081, 9.2627, 10.2509 is called "background". The background property can be set on classes, ids or directly on the HTML element.

```
.background, #background, body{  
background: rgb(107, 78, 87) }
```

If only the background color should be changed can be used:

```
.background{ background-color: rgb(107, 78,  
87) }
```

This example shows the color as background, it is applied via the CSS property "background".

To optimize and compress your CSS code, you can use our [online CSS compressor and optimizer](#) based on csstidy. If you want to create a linear or radial gradient as background or border, check our [CSS Gradient Generator](#).

Hey! You found this booklet interesting? Support Converting Colors with the new Membership Option!

The pro membership hides all ads, plus gives you double the colors in the color bucket, and more awesome pro features!

[Learn more, Memberships starting at \\$2.50/m!](#)

**Follow me
on Twitter!**

@ConvertingColor