

Converting Colors

XYZ(10.7705, 10.3701, 7.7276)

Have a look what the booklet for
XYZ(10.7705, 10.3701, 7.7276)
contains.

XYZ(10.7147, 10.3248, 7.7315)	3
<i>Conversions</i>	4
<i>Details</i>	6
<i>Harmonies</i>	12
<i>Previews</i>	24
<i>Color Blindness Simulation</i>	28
<i>CSS Examples</i>	31

Color

**XYZ(10.7147, 10.3248,
7.7315)**

Conversions

Conversions Part 1

Format	Color
Hex	6C5649
RGB	108, 86, 73
RGB Percent	42%, 34%, 29%
CMY	0.5765, 0.6627, 0.7137
CMYK	0.00, 0.20, 0.32, 0.58
HSL	22°, 19%, 35%
HSV	22°, 32%, 42%
XYZ	10.7147, 10.3248, 7.7315
YIQ	91.0960, 17.2850, 0.6210

Conversions

Conversions Part 2

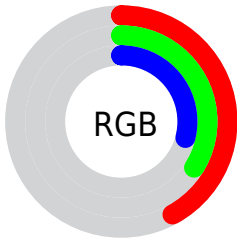
Format	Color
R_{YB}	108, 94, 73
Decimal	7099977
CIE Lab	38.42, 6.97, 11.01
CIE LCh	38, 13.029, 57.650
Yxy	10.3248, 0.3724, 0.3589
Android (android.graphics.Color)	4285290057 (0xFF6C5649)
YUV	91.0960, -8.9213, 14.8248
Hunter-Lab	32.1322, 3.2906, 8.2265

Details

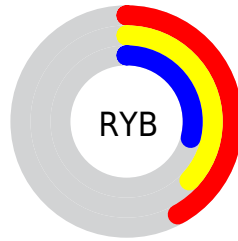
The XYZ color **10.7147, 10.3248, 7.7315** is a dark color, and the websafe version is hex **666666**. A complement of this color would be **9.5464, 10.6831, 15.7461**, and the grayscale version is **9.9829, 10.5028, 11.4375**.

A 20% lighter version of the original color is **26.8142, 26.4870, 22.1116**, and **2.8782, 2.6352, 1.5194** is the 20% darker color. If you saturate the color by 10%, you get **9.8709, 9.1613, 5.8344**, and if you desaturate by 10%, it is **11.6728, 11.6171, 9.9738**.

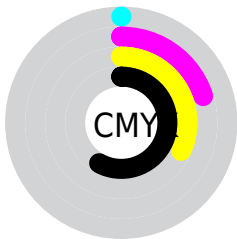
Distribution



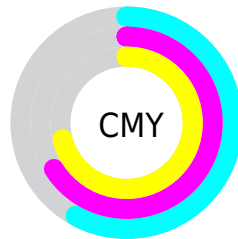
- Red (42%)
- Green (34%)
- Blue (29%)



- Red (42%)
- Yellow (37%)
- Blue (29%)



- Cyan (0%)
- Magenta (20%)
- Yellow (32%)
- Black (58%)



- Cyan (58%)
- Magenta (66%)
- Yellow (71%)

Brightness & Saturation Gradients

These gradients show how the XYZ color 10.7147, 10.3248, 7.7315 changes by changing the brightness by 10 percent. The first figure shows a shift by +10% for each color and the second figure -10%.

Similar to the brightness gradients but the following saturation gradients show a change of the XYZ color 10.7147, 10.3248, 7.7315 by changing the saturation by 10% instead.

■ 10.7147, 10.3248,
7.7315

■ 10.7147, 10.3248,
7.7315

189.6486,
192.9748, 183.4659

■ 5.9412, 5.6148,
3.8383

■ 26.7690, 26.4046,
21.9678

■ 2.8497, 2.6123,
1.5371

■ 38.7806, 38.5433,
33.1480

■ 1.0748, 0.9329,
0.2453

■ 53.9355, 53.9270,
47.5943

■ 0.0039, 0.0000,
0.0000

■ 72.5992, 72.9402,
65.7252

■ 0.0000, 0.0000,
0.0000

■ 95.1370, 95.9671,
87.9592

121.9143,

123.3922, 114.7150

153.2964,
155.6000, 146.4110

■ 10.7147, 10.3248,
7.7315

■ 10.7147, 10.3248,
7.7315

■ 9.8709, 9.1613,
5.8344

■ 11.6728, 11.6171,
9.9738

■ 9.1358, 8.1210,
4.2645

■ 12.7486, 13.0408,
12.5768

■ 8.5049, 7.2000,
3.0030

■ 13.9466, 14.6000,
15.5559

■ 7.9725, 6.3937,
2.0289

■ 15.2707, 16.2984,
18.9253

■ 7.5327, 5.6970,
1.3187

■ 16.7245, 18.1393,
22.6986

■ 7.1782, 5.1041,
0.8424

■ 18.3117, 20.1262,
26.8887

■ 6.9472, 4.7140,
0.5437

■ 20.0357, 22.2622,
31.5079

■ 21.8997, 24.5505,
36.5679

■ 23.9070, 26.9940,
42.0800

Harmonies

Analogous

The Analogous color harmony consists of three colors that are next to each other on the color wheel.



11.3344, 10.3248, 9.2056



10.7147, 10.3248, 7.7315



9.8806, 10.3248, 7.1818

Triad

The Triadic color harmony groups three colors that are evenly spaced from another and form a triangle on the color wheel.



10.7147, 10.3248, 7.7315



8.2685, 10.3248, 11.0510



10.5920, 10.3248, 15.9216

Complementary

The Complementary color scheme is a pair of colors which are on the opposite of each other on the color wheel.



10.7147, 10.3248, 7.7315



9.5464, 10.6831, 15.7461

Split Complementary

Split-complementary colors differ from the complementary color scheme. The scheme consists of three colors, the original color and two neighbors of the complement color.



9.7465, 10.3248, 16.6006



10.7147, 10.3248, 7.7315



8.4350, 10.3248, 13.5584

Square

The Square scheme is like the rectangle color scheme, but the four colors are evenly spaced on the color wheel.



10.7147, 10.3248, 7.7315



8.4957, 10.3248, 8.9175



8.9641, 10.3248, 15.6807



11.2607, 10.3248, 13.9388

Rectangle

The Rectangle color scheme consists of four colors that form a rectangle on the color wheel.



10.7147, 10.3248, 7.7315



9.3259, 10.3248, 7.3436



8.9641, 10.3248, 15.6807



10.3176, 10.3248, 16.3214

Sweetspot

The Sweet Spot groups the original color and five complimentary colors.



10.7150, 10.3253, 7.7317



22.8127, 23.4592, 23.1406



10.6400, 8.7826, 12.0007



5.4696, 5.6100, 5.4726



54.2243, 57.0482, 62.1254



6.0569, 6.3724, 6.9395

Same Dimension

The Same Dimension uses a secret algorithm to generate beautiful new colors.



10.7150, 10.3253, 7.7317



17.6601, 16.5439, 10.9724



12.2704, 13.4361, 8.2502



3.1833, 3.2839, 3.2835



8.2616, 5.5729, 0.6402



41.3230, 26.8496, 3.0045

Inverse Universe

The Inverse Universe completely reimagines the original color for something new.



9.5464, 10.6831, 15.7461



15.2567, 17.2740, 27.4378



8.1553, 7.9008, 15.2824



3.0919, 3.3122, 3.9112



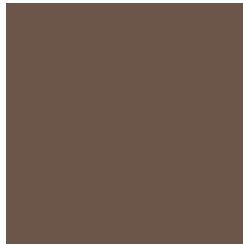
5.6588, 6.1519, 17.8114



27.9823, 29.6432, 90.4731

Previews

White Background



This preview shows how the XYZ color 10.7147, 10.3248, 7.7315 looks on a white background.

Color Contrast Check

Large Text (above 18pt) WCAG AA ✓ Pass

Any Text WCAG AA ✓ Pass

Large Text (above 18pt) WCAG AAA ✓ Pass

Any Text WCAG AAA × Fail

Black Background



This preview shows how the XYZ color 10.7147, 10.3248, 7.7315 looks on a black background.

Color Contrast Check

Large Text (above 18pt) WCAG AA ✓ Pass

Any Text WCAG AA × Fail

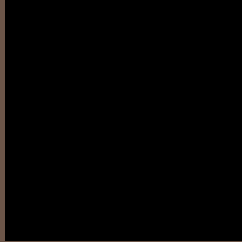
Large Text (above 18pt) WCAG AAA × Fail

Any Text WCAG AAA × Fail

If you want to check with other color combinations, try the [Color Contrast Checker](#).

XYZ 10.7147, 10.3248, 7.7315

Background



This preview shows how black text looks on a background with the XYZ color 10.7147, 10.3248, 7.7315.

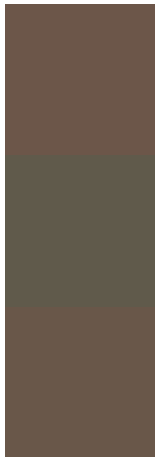


This preview shows how white text looks on a background with the XYZ color 10.7147, 10.3248,

Color Blindness Simulation

Color vision deficiency is a very complex topic, and I could not describe the different causes any better than Wikipedia does, so if you want to learn more, you should check out their [article about color blindness](#).

Dichromacy



Original Color

10.7147, 10.3248, 7.7315

Protanopia

9.7500, 10.3071, 8.1322

Deuteranopia

10.4365, 10.3007, 7.7415



Tritanopia

11.4462, 10.3938, 11.0758

Trichromacy



Original Color

10.7147, 10.3248, 7.7315

Protanomaly

10.0639, 10.3485, 7.9456

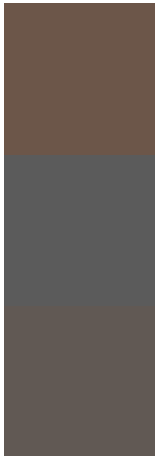
Deuteranomaly

10.5547, 10.3616, 7.7470

Tritanomaly

11.1554, 10.3883, 9.8047

Monochromacy



Original Color

10.7147, 10.3248, 7.7315

Achromatopsia

9.9438, 10.4616, 11.3927

Achromatomaly

10.1024, 10.3262, 9.8482

CSS Examples

Text

The CSS property to change the color of the text to XYZ 10.7147, 10.3248, 7.7315 is called "color". The color property can be set on classes, ids or directly on the HTML element.

This example shows how text in the color `rgb(108, 86, 73)` looks like.

```
.text, #text, p{  
    color:rgb(108, 86, 73)  
}
```

If you want to add a text shadow in that color use the text-shadow property, you can generate a text shadow directly with our [CSS Text Shadow Generator](#).

Here you see how black text with a 4 pixel rgb(108, 86, 73) colored shadow looks like.

```
.shadow{ text-shadow: 4px 4px 2px rgb(108, 86, 73) }
```

Border

The CSS property to change the border of an element to XYZ 10.7147, 10.3248, 7.7315 is called "border". The border property can be set on classes, ids or directly on the HTML element.

This example shows the color as border, it can be applied via the CSS property "border" or "border-color".

```
.border, #border, table{ border:4px solid rgb(108, 86, 73) }
```


If only the border color should be changed use the property border-color.

```
.border{ border-color:rgb(108, 86, 73) }
```

If you want to add a box shadow in that color use:

Here you see how a box with a 4 pixel rgb(108, 86, 73) colored shadow looks like.

```
.boxshadow{ -moz-box-shadow:4px 4px 4px  
4px rgb(108, 86, 73); -webkit-box-  
shadow:4px 4px 4px 4px rgb(108, 86, 73);  
box-shadow:4px 4px 4px 4px rgb(108, 86,  
73) }
```

Background

The CSS property to change the background color of an element to XYZ 10.7147, 10.3248, 7.7315 is called "background". The background property can be set on classes, ids or directly on the HTML element.

```
.background, #background, body{  
background: rgb(108, 86, 73) }
```

If only the background color should be changed can be used:

```
.background{ background-color: rgb(108, 86,  
73) }
```

This example shows the color as background, it is applied via the CSS property "background".

To optimize and compress your CSS code, you can use our [online CSS compressor and optimizer](#) based on csstidy. If you want to create a linear or radial gradient as background or border, check our [CSS Gradient Generator](#).

Hey! You found this booklet interesting? Support Converting Colors with the new Membership Option!

The pro membership hides all ads, plus gives you double the colors in the color bucket, and more awesome pro features!

[Learn more, Memberships starting at \\$2.50/m!](#)

**Follow me
on Twitter!**

@ConvertingColor