

Converting Colors

XYZ(10.9147, 10.9301, 7.1647)

Have a look what the booklet for
XYZ(10.9147, 10.9301, 7.1647)
contains.

XYZ(10.9147, 10.9301, 7.1647)	3
<i>Conversions</i>	4
<i>Details</i>	6
<i>Harmonies</i>	12
<i>Previews</i>	24
<i>Color Blindness Simulation</i>	28
<i>CSS Examples</i>	31

Color

**XYZ(10.9147, 10.9301,
7.1647)**

Conversions

Conversions Part 1

Format	Color
Hex	6C5A45
RGB	108, 90, 69
RGB Percent	42%, 35%, 27%
CMY	0.5765, 0.6470, 0.7294
CMYK	0.00, 0.17, 0.36, 0.58
HSL	32°, 22%, 35%
HSV	32°, 36%, 42%
XYZ	10.9147, 10.9301, 7.1647
YIQ	92.9880, 17.4690, -2.7150

Conversions

Conversions Part 2

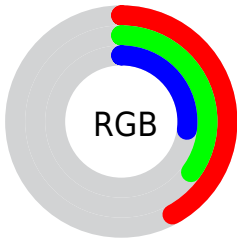
Format	Color
R_{YB}	102, 108, 69
Decimal	7100997
CIE _{Lab}	39.46, 3.97, 14.88
CIE _{LCh}	39, 15.401, 75.069
Yxy	10.9301, 0.3762, 0.3768
Android (android.graphics.Color)	4285291077 (0xFF6C5A45)
YUV	92.9880, -11.8261, 13.1655
Hunter-Lab	33.0607, 1.0740, 10.2935

Details

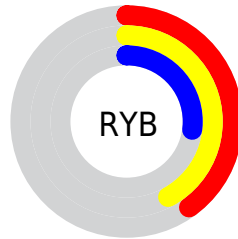
The XYZ color **10.9147, 10.9301, 7.1647** is a dark color, and the websafe version is hex **666666**. A complement of this color would be **8.5692, 9.1642, 15.5047**, and the grayscale version is **10.4257, 10.9687, 11.9449**.

A 20% lighter version of the original color is **27.0862, 27.5141, 20.7128**, and **2.9285, 2.8812, 1.3791** is the 20% darker color. If you saturate the color by 10%, you get **10.2032, 9.9956, 5.4214**, and if you desaturate by 10%, it is **11.7160, 11.9464, 9.2393**.

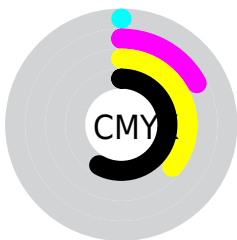
Distribution



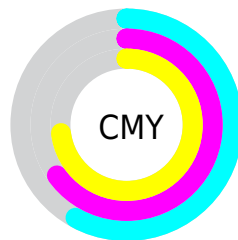
- Red (42%)
- Green (35%)
- Blue (27%)



- Red (40%)
- Yellow (42%)
- Blue (27%)



- Cyan (0%)
- Magenta (17%)
- Yellow (36%)
- Black (58%)



- Cyan (58%)
- Magenta (65%)
- Yellow (73%)

Brightness & Saturation Gradients

These gradients show how the XYZ color 10.9147, 10.9301, 7.1647 changes by changing the brightness by 10 percent. The first figure shows a shift by +10% for each color and the second figure -10%.

Similar to the brightness gradients but the following saturation gradients show a change of the XYZ color 10.9147, 10.9301, 7.1647 by changing the saturation by 10% instead.

■ 10.9147, 10.9301,
7.1647

■ 10.9147, 10.9301,
7.1647

191.0018,
197.1874, 178.7078

■ 6.0764, 6.0199,
3.4853

■ 27.1367, 27.5308,
20.8223

■ 2.9327, 2.8572,
1.3475

■ 39.2510, 39.9901,
31.6375

■ 1.1183, 1.0576,
0.1002

■ 54.5215, 55.7345,
45.6685

■ 0.0403, 0.0000,
0.0000

■ 73.3133, 75.1485,
63.3337

■ 0.0000, 0.0000,
0.0000

■ 95.9919, 98.6163,
85.0517

122.9226,

126.5225, 111.2410

154.4708,
159.2514, 142.3202

■ 10.9147, 10.9301,
7.1647

■ 10.9147, 10.9301,
7.1647

■ 10.2032, 9.9956,
5.4214

■ 11.7160, 11.9464,
9.2393

■ 9.5768, 9.1390,
3.9912

■ 12.6099, 13.0454,
11.6609

■ 9.0316, 8.3582,
2.8549

■ 13.6000, 14.2296,
14.4450

■ 8.5629, 7.6504,
1.9910

■ 14.6896, 15.5012,
17.6058

■ 8.1656, 7.0127,
1.3752

■ 15.8816, 16.8622,
21.1570

■ 7.8284, 6.4393,
0.9509

■ 17.1789, 18.3145,
25.1113

■ 7.7055, 6.2304,
0.7965

■ 18.5844, 19.8600,
29.4810

■ 20.1007, 21.5004,
34.2779

■ 21.7302, 23.2376,
39.5133

Harmonies

Analogous

The Analogous color harmony consists of three colors that are next to each other on the color wheel.



11.8723, 10.9301, 8.2766



10.9147, 10.9301, 7.1647



9.8754, 10.9301, 7.1673

Triad

The Triadic color harmony groups three colors that are evenly spaced from another and form a triangle on the color wheel.



10.9147, 10.9301, 7.1647



8.5681, 10.9301, 13.4594



11.8760, 10.9301, 16.4416

Complementary

The Complementary color scheme is a pair of colors which are on the opposite of each other on the color wheel.



10.9147, 10.9301, 7.1647



8.5692, 9.1642, 15.5047

Split Complementary

Split-complementary colors differ from the complementary color scheme. The scheme consists of three colors, the original color and two neighbors of the complement color.



10.9195, 10.9301, 18.3619



10.9147, 10.9301, 7.1647



9.0342, 10.9301, 16.4538

Square

The Square scheme is like the rectangle color scheme, but the four colors are evenly spaced on the color wheel.



10.9147, 10.9301, 7.1647



8.5670, 10.9301, 10.4801



9.8799, 10.9301, 18.3666



12.4520, 10.9301, 13.4450

Rectangle

The Rectangle color scheme consists of four colors that form a rectangle on the color wheel.



10.9147, 10.9301, 7.1647



9.2773, 10.9301, 7.7878



9.8799, 10.9301, 18.3666



11.5856, 10.9301, 17.2550

Sweetspot

The Sweet Spot groups the original color and five complimentary colors.



10.9150, 10.9306, 7.1649



22.9531, 23.8841, 22.7430



10.0411, 8.1359, 10.1011



5.5148, 5.7320, 5.3902



54.2243, 57.0482, 62.1254



6.0569, 6.3724, 6.9395

Same Dimension

The Same Dimension uses a secret algorithm to generate beautiful new colors.



10.9150, 10.9306, 7.1649



18.1437, 17.8565, 10.0686



12.4643, 14.2622, 7.7263



3.2221, 3.3614, 3.2964



9.1633, 7.3763, 0.9408



45.8142, 35.8321, 4.5016

Inverse Universe

The Inverse Universe completely reimagines the original color for something new.



8.5692, 9.1642, 15.5047



13.3942, 14.2813, 26.9583



7.3825, 6.6524, 15.0824



3.0528, 3.2339, 3.8982



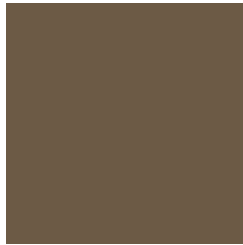
4.5539, 3.9422, 17.4431



22.3531, 18.3847, 88.5967

Previews

White Background



This preview shows how the XYZ color 10.9147, 10.9301, 7.1647 looks on a white background.

Color Contrast Check

Large Text (above 18pt) WCAG AA ✓ Pass

Any Text WCAG AA ✓ Pass

Large Text (above 18pt) WCAG AAA ✓ Pass

Any Text WCAG AAA × Fail

Black Background



This preview shows how the XYZ color 10.9147, 10.9301, 7.1647 looks on a black background.

Color Contrast Check

Large Text (above 18pt) WCAG AA ✓ Pass

Any Text WCAG AA × Fail

Large Text (above 18pt) WCAG AAA × Fail

Any Text WCAG AAA × Fail

If you want to check with other color combinations, try the [Color Contrast Checker](#).

XYZ 10.9147, 10.9301, 7.1647

Background



This preview shows how black text looks on a background with the XYZ color 10.9147, 10.9301, 7.1647.

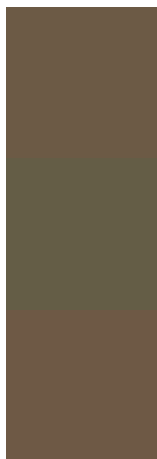


This preview shows how white text looks on a background with the XYZ color 10.9147, 10.9301,

Color Blindness Simulation

Color vision deficiency is a very complex topic, and I could not describe the different causes any better than Wikipedia does, so if you want to learn more, you should check out their [article about color blindness](#).

Dichromacy



Original Color

10.9147, 10.9301, 7.1647

Protanopia

10.2754, 10.9802, 7.3722

Deuteranopia

11.0770, 10.8894, 7.1483



Tritanopia

11.9395, 10.9862, 11.8472

Trichromacy



Original Color

10.9147, 10.9301, 7.1647

Protanomaly

10.5262, 10.9801, 7.3589

Deuteranomaly

10.9532, 10.8256, 7.1425

Tritanomaly

11.5204, 10.9345, 9.8909

Monochromacy



Original Color

10.9147, 10.9301, 7.1647

Achromatopsia

10.4043, 10.9462, 11.9204

Achromatomaly

10.4644, 10.8911, 9.9382

CSS Examples

Text

The CSS property to change the color of the text to XYZ 10.9147, 10.9301, 7.1647 is called "color". The color property can be set on classes, ids or directly on the HTML element.

This example shows how text in the color rgb(108, 90, 69) looks like.

```
.text, #text, p{  
    color:rgb(108, 90, 69)  
}
```

If you want to add a text shadow in that color use the text-shadow property, you can generate a text shadow directly with our [CSS Text Shadow Generator](#).

Here you see how black text with a 4 pixel rgb(108, 90, 69) colored shadow looks like.

```
.shadow{ text-shadow: 4px 4px 2px rgb(108, 90, 69) }
```

Border

The CSS property to change the border of an element to XYZ 10.9147, 10.9301, 7.1647 is called "border". The border property can be set on classes, ids or directly on the HTML element.

This example shows the color as border, it can be applied via the CSS property "border" or "border-color".

```
.border, #border, table{ border:4px solid rgb(108, 90, 69) }
```


If only the border color should be changed use the property `border-color`.

```
.border{ border-color:rgb(108, 90, 69) }
```

If you want to add a box shadow in that color use:

Here you see how a box with a 4 pixel `rgb(108, 90, 69)` colored shadow looks like.

```
.boxshadow{ -moz-box-shadow:4px 4px 4px  
4px rgb(108, 90, 69); -webkit-box-  
shadow:4px 4px 4px 4px rgb(108, 90, 69);  
box-shadow:4px 4px 4px 4px rgb(108, 90,  
69) }
```

Background

The CSS property to change the background color of an element to XYZ 10.9147, 10.9301, 7.1647 is called "background". The background property can be set on classes, ids or directly on the HTML element.

```
.background, #background, body{  
background: rgb(108, 90, 69) }
```

If only the background color should be changed can be used:

```
.background{ background-color: rgb(108, 90,  
69) }
```

This example shows the color as background, it is applied via the CSS property "background".

To optimize and compress your CSS code, you can use our [online CSS compressor and optimizer](#) based on csstidy. If you want to create a linear or radial gradient as background or border, check our [CSS Gradient Generator](#).

Hey! You found this booklet interesting? Support Converting Colors with the new Membership Option!

The pro membership hides all ads, plus gives you double the colors in the color bucket, and more awesome pro features!

[Learn more, Memberships starting at \\$2.50/m!](#)

**Follow me
on Twitter!**

@ConvertingColor