

# Converting Colors

XYZ(101.1962, 82.7110,  
117.0725)

Have a look what the booklet for  
XYZ(101.1962, 82.7110, 117.0725)  
contains.

<b>XYZ(81.3613, 72.6226, 104.3371)</b> .....	3
<b><i>Conversions</i></b> .....	4
<b><i>Details</i></b> .....	6
<b><i>Harmonies</i></b> .....	12
<b><i>Previews</i></b> .....	24
<b><i>Color Blindness Simulation</i></b> .....	28
<b><i>CSS Examples</i></b> .....	31

# Color

**XYZ(81.3613, 72.6226,  
104.3371)**

# Conversions

## Conversions Part 1

Format	Color
Hex	FFCEFF
RGB	255, 206, 255
RGB Percent	100%, 81%, 100%
CMY	0.0000, 0.1921, 0.0000
CMYK	0.00, 0.19, 0.00, 0.00
HSL	300°, 100%, 90%
HSV	300°, 19%, 100%
XYZ	81.3613, 72.6226, 104.3371
YIQ	226.2370, 13.4750, 25.6270

# Conversions

## Conversions Part 2

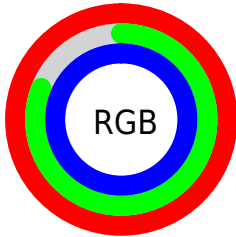
<b>Format</b>	<b>Color</b>
R <sub>Y</sub> B	255, 206, 255
Decimal	16764671
CIE Lab	88.27, 25.32, -17.41
CIE LCh	88, 30.725, 325.494
Yxy	72.6226, 0.3150, 0.2811
Android (android.graphics.Color)	4294954751 (0xFFFFCEFF)
YUV	226.2370, 14.1802, 25.2252
Hunter-Lab	85.2189, 21.2868, -12.9380

# Details

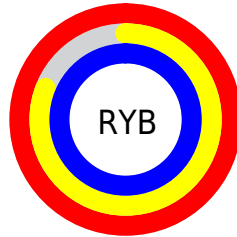
The XYZ color **81.3613, 72.6226, 104.3371** is a light color, and the websafe version is hex **FFCCFF**. A complement of this color would be **72.3565, 89.0991, 71.7804**, and the grayscale version is **72.3554, 76.1235, 82.8985**.

A 20% lighter version of the original color is **95.0500, 100.0000, 108.9000**, and **44.5484, 38.2162, 58.4546** is the 20% darker color. If you saturate the color by 10%, you get **75.7135, 61.3271, 102.4545**, and if you desaturate by 10%, it is **88.0077, 85.9153, 106.5526**.

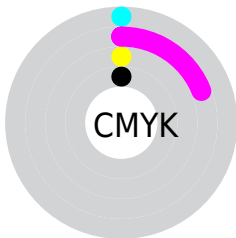
# Distribution



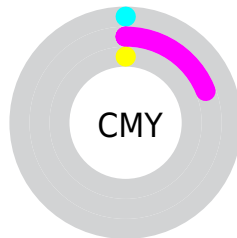
- Red (100%)
- Green (81%)
- Blue (100%)



- Red (100%)
- Yellow (81%)
- Blue (100%)



- Cyan (0%)
- Magenta (19%)
- Yellow (0%)
- Black (0%)



- Cyan (0%)
- Magenta (19%)
- Yellow (0%)

# Brightness & Saturation Gradients

These gradients show how the XYZ color 81.3613, 72.6226, 104.3371 changes by changing the brightness by 10 percent. The first figure shows a shift by +10% for each color and the second figure -10%.

Similar to the brightness gradients but the following saturation gradients show a change of the XYZ color 81.3613, 72.6226, 104.3371 by changing the saturation by 10% instead.



81.3613, 72.6226,  
104.3371

81.3613, 72.6226,  
104.3371

488.1757,  
469.7058, 595.3751

61.1515, 53.6674,  
79.2905

134.2185,  
122.9413, 169.2084

44.6005, 38.3358,  
58.6120

167.5966,  
155.0736, 209.8701

31.3428, 26.2434,  
41.8829

206.0948,  
192.3671, 256.5741

21.0131, 17.0059,  
28.6847

250.0786,  
235.2061, 309.7387

13.2461, 10.2387,  
18.5989

299.9132,  
283.9751, 369.7826

7.6764, 5.5575,  
11.2070

355.9640,

3.9386, 2.5779,

339.0584, 437.1243

6.0903

418.5964,  
400.8405, 512.1823

■ 1.6675, 0.9156,  
2.8304

■ 0.4358, 0.0000,  
1.0087

■ 81.3613, 72.6226,  
104.3371

■ 81.3613, 72.6226,  
104.3371

■ 75.7135, 61.3271,  
102.4545

■ 88.0077, 85.9153,  
106.5526

■ 71.0123, 51.9246,  
100.8874

95.0500, 100.0000,  
108.9000

■ 67.2070, 44.3141,  
99.6190

■ 64.2409, 38.3818,  
98.6303

■ 62.0505, 34.0009,  
97.9002

■ 60.5634, 31.0267,  
97.4045

■ 59.6936, 29.2873,  
97.1145

■ 59.3118, 28.5235,  
96.9873

■ 59.2900, 28.4800,  
96.9800

# Harmonies

## Analogous

The Analogous color harmony consists of three colors that are next to each other on the color wheel.



75.3000, 72.6226, 121.6059



81.3613, 72.6226, 104.3371



84.1223, 72.6226, 82.3020

# Triad

The Triadic color harmony groups three colors that are evenly spaced from another and form a triangle on the color wheel.



81.3613, 72.6226, 104.3371



70.1438, 72.6226, 45.1506



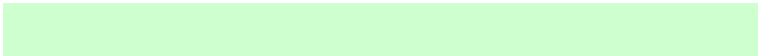
57.0196, 72.6226, 97.8396

# Complementary

The Complementary color scheme is a pair of colors which are on the opposite of each other on the color wheel.



81.3613, 72.6226, 104.3371



72.3565, 89.0991, 71.7804

# Split Complementary

Split-complementary colors differ from the complementary color scheme. The scheme consists of three colors, the original color and two neighbors of the complement color.



55.8526, 72.6226, 75.9309



81.3613, 72.6226, 104.3371



63.1098, 72.6226, 47.8328

# Square

The Square scheme is like the rectangle color scheme, but the four colors are evenly spaced on the color wheel.



81.3613, 72.6226, 104.3371



77.3599, 72.6226, 50.1475



58.0044, 72.6226, 58.2578



61.3125, 72.6226, 117.4112



# Rectangle

The Rectangle color scheme consists of four colors that form a rectangle on the color wheel.



81.3613, 72.6226, 104.3371



83.5864, 72.6226, 68.7299



58.0044, 72.6226, 58.2578



56.2623, 72.6226, 90.4064

# Sweetspot

The Sweet Spot groups the original color and five complimentary colors.



81.3627, 72.6254, 104.3376



90.3618, 90.6237, 107.3373



65.5779, 64.4880, 103.5988



19.2369, 19.1886, 22.9398



0.0000, 0.0000, 0.0000



20.3446, 21.4041, 23.3091



# Same Dimension

The Same Dimension uses a secret algorithm to generate beautiful new colors.



81.3627, 72.6254, 104.3376



79.1090, 68.1179, 103.5863



77.6663, 71.1468, 84.8729



18.7928, 18.3004, 22.7918



30.9803, 14.8814, 50.6741



3.0164, 1.4490, 4.9340



# Inverse Universe

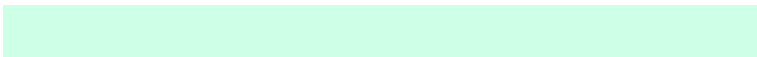
The Inverse Universe completely reimagines the original color for something new.



81.3627, 72.6254, 104.3376



79.1090, 68.1179, 103.5863



75.5689, 90.3841, 88.6967



18.7928, 18.3004, 22.7918



30.9803, 14.8814, 50.6741



3.0164, 1.4490, 4.9340



# Previews

## White Background



This preview shows how the XYZ color 81.3613, 72.6226, 104.3371 looks on a white background.

## Color Contrast Check

Large Text (above 18pt) WCAG AA × Fail

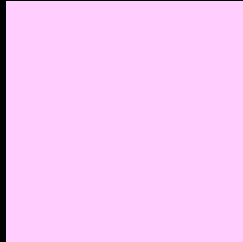
Any Text WCAG AA × Fail

Large Text (above 18pt) WCAG AAA × Fail

Any Text WCAG AAA × Fail



# Black Background



This preview shows how the XYZ color 81.3613, 72.6226, 104.3371 looks on a black background.

## Color Contrast Check

Large Text (above 18pt) WCAG AA ✓ Pass

Any Text WCAG AA ✓ Pass

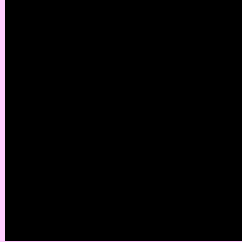
Large Text (above 18pt) WCAG AAA ✓ Pass

Any Text WCAG AAA ✓ Pass

If you want to check with other color combinations, try the [Color Contrast Checker](#).

# XYZ 81.3613, 72.6226, 104.3371

## Background



This preview shows how black text looks on a background with the XYZ color 81.3613, 72.6226, 104.3371.



This preview shows how white text looks on a background with the XYZ color 81.3613, 72.6226,

104.3371.

# Color Blindness Simulation

Color vision deficiency is a very complex topic, and I could not describe the different causes any better than Wikipedia does, so if you want to learn more, you should check out their [article about color blindness](#).

## Dichromacy



### Original Color

81.3613, 72.6226, 104.3371

### Protanopia

71.6675, 72.8535, 104.8926

### Deuteranopia

74.2804, 72.6976, 103.0455



## Tritanopia

76.9431, 72.6438, 82.6394

# Trichromacy



## Original Color

81.3613, 72.6226, 104.3371



## Protanomaly

74.9836, 72.6439, 104.6774



## Deuteranomaly

76.6928, 72.4199, 103.7022



## Tritanomaly

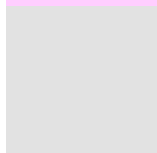
78.2314, 72.4108, 89.9742

# Monochromacy



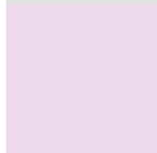
## Original Color

81.3613, 72.6226, 104.3371



## Achromatopsia

72.2879, 76.0525, 82.8211



## Achromatomaly

75.5426, 74.7820, 90.5736

# CSS Examples

## Text

The CSS property to change the color of the text to XYZ 81.3613, 72.6226, 104.3371 is called "color". The color property can be set on classes, ids or directly on the HTML element.

This example shows how text in the color `rgb(255, 206, 255)` looks like.

```
.text, #text, p{  
    color:rgb(255, 206, 255)  
}
```

If you want to add a text shadow in that color use the text-shadow property, you can generate a text shadow directly with our [CSS Text Shadow Generator](#).

Here you see how black text with a 4 pixel rgb(255, 206, 255) colored shadow looks like.

```
.shadow{ text-shadow: 4px 4px 2px rgb(255, 206, 255) }
```

## Border

The CSS property to change the border of an element to XYZ 81.3613, 72.6226, 104.3371 is called "border". The border property can be set on classes, ids or directly on the HTML element.

This example shows the color as border, it can be applied via the CSS property "border" or "border-color".

```
.border, #border, table{ border:4px solid rgb(255, 206, 255) }
```



If only the border color should be changed use the property border-color.

```
.border{ border-color:rgb(255, 206, 255) }
```

If you want to add a box shadow in that color use:

Here you see how a box with a 4 pixel rgb(255, 206, 255) colored shadow looks like.

```
.boxshadow{ -moz-box-shadow:4px 4px 4px  
4px rgb(255, 206, 255); -webkit-box-  
shadow:4px 4px 4px 4px rgb(255, 206, 255);  
box-shadow:4px 4px 4px 4px rgb(255, 206,  
255) }
```

# Background

The CSS property to change the background color of an element to XYZ 81.3613, 72.6226, 104.3371 is called "background". The background property can be set on classes, ids or directly on the HTML element.

```
.background, #background, body{  
background: rgb(255, 206, 255) }
```

If only the background color should be changed can be used:

```
.background{ background-color: rgb(255,  
206, 255) }
```

This example shows the color as background, it is applied via the CSS property "background".

To optimize and compress your CSS code, you can use our [online CSS compressor and optimizer](#) based on csstidy. If you want to create a linear or radial gradient as background or border, check our [CSS Gradient Generator](#).

Hey! You found this booklet interesting? Support Converting Colors with the new Membership Option!

The pro membership hides all ads, plus gives you double the colors in the color bucket, and more awesome pro features!

**[Learn more, Memberships starting at \\$2.50/m!](#)**

**Follow me  
on Twitter!**

@ConvertingColor