

Converting Colors

XYZ(11.0740, 10.3274, 10.6414)

Have a look what the booklet for
XYZ(11.0740, 10.3274, 10.6414)
contains.

XYZ(11.0734, 10.3274, 10.6423)	3
<i>Conversions</i>	4
<i>Details</i>	6
<i>Harmonies</i>	12
<i>Previews</i>	24
<i>Color Blindness Simulation</i>	28
<i>CSS Examples</i>	31

Color

**XYZ(11.0734, 10.3274,
10.6423)**

Conversions

Conversions Part 1

Format	Color
Hex	6B5558
RGB	107, 85, 88
RGB Percent	42%, 33%, 35%
CMY	0.5804, 0.6667, 0.6549
CMYK	0.00, 0.21, 0.18, 0.58
HSL	352°, 11%, 38%
HSV	352°, 21%, 42%
XYZ	11.0734, 10.3274, 10.6423
YIQ	91.9200, 12.1490, 5.5970

Conversions

Conversions Part 2

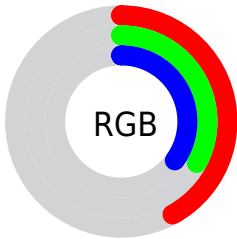
Format	Color
R _Y B	107, 85, 88
Decimal	7034200
CIE Lab	38.42, 9.62, 1.71
CIE LCh	38, 9.768, 10.062
Yxy	10.3274, 0.3456, 0.3223
Android (android.graphics.Color)	4285224280 (0xFF6B5558)
YUV	91.9200, -1.9326, 13.2252
Hunter-Lab	32.1363, 5.2684, 2.8608

Details

The XYZ color **11.0734, 10.3274, 10.6423** is a dark color, and the websafe version is hex **666666**. A complement of this color would be **11.5032, 13.4465, 15.0866**, and the grayscale version is **10.1569, 10.6858, 11.6369**.

A 20% lighter version of the original color is **27.5495, 26.5339, 27.7143**, and **2.9985, 2.6218, 2.6335** is the 20% darker color. If you saturate the color by 10%, you get **9.9350, 8.6249, 8.4924**, and if you desaturate by 10%, it is **12.3883, 12.3051, 13.0908**.

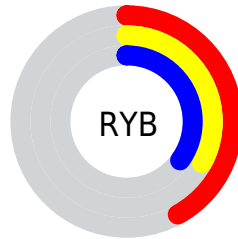
Distribution



Red (42%)

Green (33%)

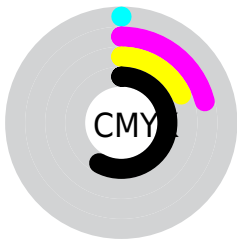
Blue (35%)



Red (42%)

Yellow (33%)

Blue (35%)

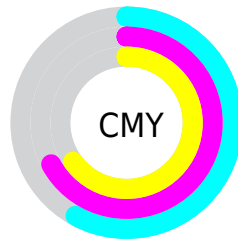


Cyan (0%)

Magenta (21%)

Yellow (18%)

Black (58%)



Cyan (58%)

Magenta (67%)

Yellow (65%)

Brightness & Saturation Gradients

These gradients show how the XYZ color 11.0734, 10.3274, 10.6423 changes by changing the brightness by 10 percent. The first figure shows a shift by +10% for each color and the second figure -10%.

Similar to the brightness gradients but the following saturation gradients show a change of the XYZ color 11.0734, 10.3274, 10.6423 by changing the saturation by 10% instead.

■ 11.0734, 10.3274,
10.6423

■ 11.0734, 10.3274,
10.6423

192.0683,
192.9931, 205.8454

■ 6.1839, 5.6166,
5.7157

■ 27.4276, 26.4095,
27.6233

■ 2.9989, 2.6134,
2.6070

■ 39.6229, 38.5496,
40.5147

■ 1.1532, 0.9334,
0.8961

■ 54.9843, 53.9349,
56.8982

■ 0.0689, 0.0000,
0.0000

■ 73.8770, 72.9497,
77.1923

■ 0.0000, 0.0000,
0.0000

■ 96.6664, 95.9786,
101.8156

123.7178,

123.4058, 131.1864

155.3967,
155.6159, 165.7235

■ 11.0734, 10.3274,
10.6423

■ 11.0734, 10.3274,
10.6423

■ 9.9350, 8.6249,
8.4924

■ 12.3883, 12.3051,
13.0908

■ 8.9649, 7.1841,
6.6289

■ 13.8859, 14.5679,
15.8481

■ 8.1551, 5.9923,
5.0400

■ 15.5733, 17.1270,
18.9246

■ 7.4969, 5.0355,
3.7127

■ 17.4566, 19.9927,
22.3302

■ 6.9809, 4.2979,
2.6327

■ 19.5420, 23.1746,
26.0742

■ 6.5963, 3.7622,
1.7845

■ 21.8353, 26.6820,
30.1656

■ 6.3309, 3.4083,
1.1511

■ 24.3420, 30.5237,
34.6131

■ 6.1468, 3.1592,
0.7223

■ 27.0674, 34.7083,
39.4250

■ 30.0167, 39.2441,
44.6094

Harmonies

Analogous

The Analogous color harmony consists of three colors that are next to each other on the color wheel.



11.0143, 10.3274, 12.4853



11.0734, 10.3274, 10.6423



10.7846, 10.3274, 9.1326

Triad

The Triadic color harmony groups three colors that are evenly spaced from another and form a triangle on the color wheel.



11.0734, 10.3274, 10.6423



9.0476, 10.3274, 8.7655



9.4037, 10.3274, 14.8797

Complementary

The Complementary color scheme is a pair of colors which are on the opposite of each other on the color wheel.



11.0734, 10.3274, 10.6423



11.5032, 13.4465, 15.0866

Split Complementary

Split-complementary colors differ from the complementary color scheme. The scheme consists of three colors, the original color and two neighbors of the complement color.



8.9070, 10.3274, 13.6598



11.0734, 10.3274, 10.6423



8.7077, 10.3274, 10.0893

Square

The Square scheme is like the rectangle color scheme, but the four colors are evenly spaced on the color wheel.



11.0734, 10.3274, 10.6423



9.6032, 10.3274, 8.1294



8.6574, 10.3274, 11.8696



10.0317, 10.3274, 15.0690

Rectangle

The Rectangle color scheme consists of four colors that form a rectangle on the color wheel.



11.0734, 10.3274, 10.6423



10.4406, 10.3274, 8.4679



8.6574, 10.3274, 11.8696



9.2166, 10.3274, 14.5707

Sweetspot

The Sweet Spot groups the original color and five complimentary colors.



11.0737, 10.3279, 10.6425



23.3187, 23.7480, 25.5385



11.5769, 10.4842, 15.3236



5.6154, 5.7046, 6.1284



54.2243, 57.0482, 62.1254



6.0569, 6.3724, 6.9395

Same Dimension

The Same Dimension uses a secret algorithm to generate beautiful new colors.



11.0737, 10.3279, 10.6425



18.7407, 16.8636, 17.0094



11.5915, 11.5583, 10.2149



3.1150, 3.1229, 3.3360



7.4699, 3.8401, 0.8372



37.8661, 19.4884, 3.2315

Inverse Universe

The Inverse Universe completely reimagines the original color for something new.



11.0737, 10.3279, 10.6425



18.7407, 16.8636, 17.0094



10.8909, 11.9739, 15.6473



3.1150, 3.1229, 3.3360



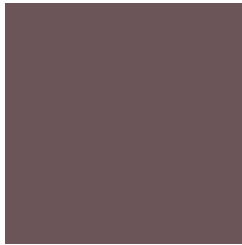
7.4699, 3.8401, 0.8372



37.8661, 19.4884, 3.2315

Previews

White Background



This preview shows how the XYZ color 11.0734, 10.3274, 10.6423 looks on a white background.

Color Contrast Check

Large Text (above 18pt) WCAG AA ✓ Pass

Any Text WCAG AA ✓ Pass

Large Text (above 18pt) WCAG AAA ✓ Pass

Any Text WCAG AAA × Fail

Black Background



This preview shows how the XYZ color 11.0734, 10.3274, 10.6423 looks on a black background.

Color Contrast Check

Large Text (above 18pt) WCAG AA ✓ Pass

Any Text WCAG AA × Fail

Large Text (above 18pt) WCAG AAA × Fail

Any Text WCAG AAA × Fail

If you want to check with other color combinations, try the [Color Contrast Checker](#).

XYZ 11.0734, 10.3274, 10.6423

Background



This preview shows how black text looks on a background with the XYZ color 11.0734, 10.3274, 10.6423.



This preview shows how white text looks on a background with the XYZ color 11.0734, 10.3274,

Color Blindness Simulation

Color vision deficiency is a very complex topic, and I could not describe the different causes any better than Wikipedia does, so if you want to learn more, you should check out their [article about color blindness](#).

Dichromacy



Original Color

11.0734, 10.3274, 10.6423

Protanopia

9.9581, 10.3430, 11.3691

Deuteranopia

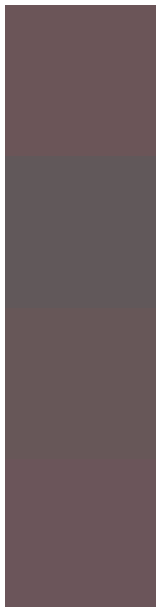
10.6180, 10.4507, 10.6901



Tritanopia

11.2002, 10.3781, 11.3104

Trichromacy



Original Color

11.0734, 10.3274, 10.6423

Protanomaly

10.2650, 10.2590, 11.1120

Deuteranomaly

10.7632, 10.4045, 10.6735

Tritanomaly

11.1574, 10.3610, 11.0847

Monochromacy



Original Color

11.0734, 10.3274, 10.6423

Achromatopsia

10.1725, 10.7023, 11.6548

Achromatomaly

10.3905, 10.4415, 11.3653

CSS Examples

Text

The CSS property to change the color of the text to XYZ 11.0734, 10.3274, 10.6423 is called "color". The color property can be set on classes, ids or directly on the HTML element.

This example shows how text in the color `rgb(107, 85, 88)` looks like.

```
.text, #text, p{  
    color:rgb(107, 85, 88)  
}
```

If you want to add a text shadow in that color use the text-shadow property, you can generate a text shadow directly with our [CSS Text Shadow Generator](#).

Here you see how black text with a 4 pixel rgb(107, 85, 88) colored shadow looks like.

```
.shadow{ text-shadow: 4px 4px 2px rgb(107, 85, 88) }
```

Border

The CSS property to change the border of an element to XYZ 11.0734, 10.3274, 10.6423 is called "border". The border property can be set on classes, ids or directly on the HTML element.

This example shows the color as border, it can be applied via the CSS property "border" or "border-color".

```
.border, #border, table{ border:4px solid rgb(107, 85, 88) }
```


If only the border color should be changed use the property border-color.

```
.border{ border-color:rgb(107, 85, 88) }
```

If you want to add a box shadow in that color use:

Here you see how a box with a 4 pixel rgb(107, 85, 88) colored shadow looks like.

```
.boxshadow{ -moz-box-shadow:4px 4px 4px  
4px rgb(107, 85, 88); -webkit-box-  
shadow:4px 4px 4px 4px rgb(107, 85, 88);  
box-shadow:4px 4px 4px 4px rgb(107, 85,  
88) }
```

Background

The CSS property to change the background color of an element to XYZ 11.0734, 10.3274, 10.6423 is called "background". The background property can be set on classes, ids or directly on the HTML element.

```
.background, #background, body{  
background: rgb(107, 85, 88) }
```

If only the background color should be changed can be used:

```
.background{ background-color: rgb(107, 85,  
88) }
```

This example shows the color as background, it is applied via the CSS property "background".

To optimize and compress your CSS code, you can use our [online CSS compressor and optimizer](#) based on csstidy. If you want to create a linear or radial gradient as background or border, check our [CSS Gradient Generator](#).

Hey! You found this booklet interesting? Support Converting Colors with the new Membership Option!

The pro membership hides all ads, plus gives you double the colors in the color bucket, and more awesome pro features!

[Learn more, Memberships starting at \\$2.50/m!](#)

**Follow me
on Twitter!**

@ConvertingColor