

Converting Colors

XYZ(11.2253, 11.1401, 8.3610)

Have a look what the booklet for
XYZ(11.2253, 11.1401, 8.3610)
contains.

XYZ(11.2299, 11.1921, 8.4059)	3
<i>Conversions</i>	4
<i>Details</i>	6
<i>Harmonies</i>	12
<i>Previews</i>	24
<i>Color Blindness Simulation</i>	28
<i>CSS Examples</i>	31

Color

**XYZ(11.2299, 11.1921,
8.4059)**

Conversions

Conversions Part 1

Format	Color
Hex	6C5B4C
RGB	108, 91, 76
RGB Percent	42%, 36%, 30%
CMY	0.5765, 0.6431, 0.7020
CMYK	0.00, 0.16, 0.30, 0.58
HSL	28°, 17%, 36%
HSV	28°, 30%, 42%
XYZ	11.2299, 11.1921, 8.4059
YIQ	94.3730, 14.9470, -1.0610

Conversions

Conversions Part 2

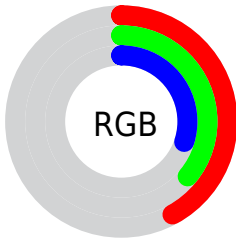
Format	Color
RYB	108, 104, 76
Decimal	7101260
CIELab	39.90, 4.39, 11.22
CIELCh	40, 12.051, 68.634
Yxy	11.1921, 0.3643, 0.3631
Android (android.graphics.Color)	4285291340 (0xFF6C5B4C)
YUV	94.3730, -9.0579, 11.9509
Hunter-Lab	33.4546, 1.3726, 8.5208

Details

The XYZ color **11.2299, 11.1921, 8.4059** is a dark color, and the websafe version is hex **666666**. A complement of this color would be **9.6015, 10.4476, 15.6978**, and the grayscale version is **10.7463, 11.3059, 12.3121**.

A 20% lighter version of the original color is **27.7238, 28.0040, 23.3462**, and **3.0626, 2.9417, 1.7729** is the 20% darker color. If you saturate the color by 10%, you get **10.4138, 10.1111, 6.4344**, and if you desaturate by 10%, it is **12.1472, 12.3743, 10.7225**.

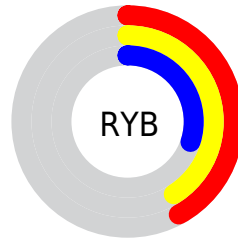
Distribution



Red (42%)

Green (36%)

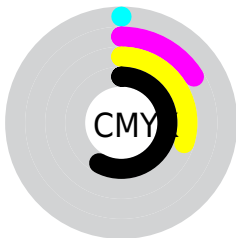
Blue (30%)



Red (42%)

Yellow (41%)

Blue (30%)

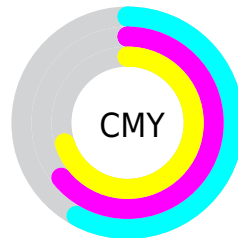


Cyan (0%)

Magenta (16%)

Yellow (30%)

Black (58%)



Cyan (58%)

Magenta (64%)

Yellow (70%)

Brightness & Saturation Gradients

These gradients show how the XYZ color 11.2299, 11.1921, 8.4059 changes by changing the brightness by 10 percent. The first figure shows a shift by +10% for each color and the second figure -10%.

Similar to the brightness gradients but the following saturation gradients show a change of the XYZ color 11.2299, 11.1921, 8.4059 by changing the saturation by 10% instead.

■ 11.2299, 11.1921,
8.4059

■ 11.2299, 11.1921,
8.4059

193.1140,
198.9808, 188.9338

■ 6.2901, 6.1962,
4.2643

■ 27.7137, 28.0148,
23.3096

■ 3.0646, 2.9647,
1.7714

■ 39.9885, 40.6105,
34.9087

■ 1.1880, 1.1134,
0.4090

■ 55.4389, 56.5081,
49.8308

■ 0.0969, 0.0000,
0.0000

■ 74.4304, 76.0922,
68.4943

■ 0.0000, 0.0000,
0.0000

■ 97.3283, 99.7472,
91.3178

124.4979,

127.8573, 118.7199

156.3047,
160.8070, 151.1190

■ 11.2299, 11.1921,
8.4059

■ 11.2299, 11.1921,
8.4059

■ 10.4138, 10.1111,
6.4344

■ 12.1472, 12.3743,
10.7225

■ 9.6940, 9.1269,
4.7903

■ 13.1684, 13.6591,
13.3991

■ 9.0665, 8.2369,
3.4558

■ 14.2975, 15.0495,
16.4507

■ 8.5266, 7.4379,
2.4105

■ 15.5378, 16.5481,
19.8912

■ 8.0692, 6.7262,
1.6321

■ 16.8924, 18.1574,
23.7338

■ 7.6885, 6.0980,
1.0945

■ 18.3645, 19.8798,
27.9909

■ 7.3636, 5.5433,
0.6934

■ 19.9569, 21.7175,
32.6747

■ 7.3522, 5.5239,
0.6787

■ 21.6725, 23.6728,
37.7965

■ 23.5140, 25.7479,
43.3676

Harmonies

Analogous

The Analogous color harmony consists of three colors that are next to each other on the color wheel.



11.9339, 11.1921, 9.5494



11.2299, 11.1921, 8.4059



10.4000, 11.1921, 8.2027

Triad

The Triadic color harmony groups three colors that are evenly spaced from another and form a triangle on the color wheel.



11.2299, 11.1921, 8.4059



9.1365, 11.1921, 12.8854



11.6657, 11.1921, 16.1170

Complementary

The Complementary color scheme is a pair of colors which are on the opposite of each other on the color wheel.



11.2299, 11.1921, 8.4059



9.6015, 10.4476, 15.6978

Split Complementary

Split-complementary colors differ from the complementary color scheme. The scheme consists of three colors, the original color and two neighbors of the complement color.



10.8792, 11.1921, 17.2871



11.2299, 11.1921, 8.4059



9.4391, 11.1921, 15.2687

Square

The Square scheme is like the rectangle color scheme, but the four colors are evenly spaced on the color wheel.



11.2299, 11.1921, 8.4059



9.2196, 11.1921, 10.5957



10.0668, 11.1921, 16.9580



12.1944, 11.1921, 13.9286

Rectangle

The Rectangle color scheme consists of four colors that form a rectangle on the color wheel.



11.2299, 11.1921, 8.4059



9.8911, 11.1921, 8.5985



10.0668, 11.1921, 16.9580



11.4211, 11.1921, 16.6546

Sweetspot

The Sweet Spot groups the original color and five complimentary colors.



11.2302, 11.1926, 8.4061



23.1916, 24.0707, 23.7175



10.7476, 9.1486, 11.5709



5.5613, 5.7613, 5.6020



54.2243, 57.0482, 62.1254



6.0569, 6.3724, 6.9395

Same Dimension

The Same Dimension uses a secret algorithm to generate beautiful new colors.



11.2302, 11.1926, 8.4061



18.6460, 18.2380, 12.1569



12.7396, 14.2114, 8.9093



3.2058, 3.3289, 3.2910



8.7424, 6.5345, 0.8005



43.6909, 31.5854, 3.7938

Inverse Universe

The Inverse Universe completely reimagines the original color for something new.



9.6015, 10.4476, 15.6978



15.2576, 16.6871, 27.3245



8.3459, 7.9364, 15.2793



3.0690, 3.2664, 3.9036



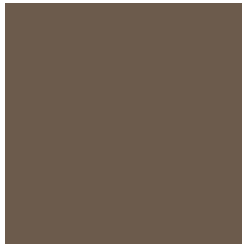
4.9679, 4.7701, 17.5811



24.4377, 22.5539, 89.2915

Previews

White Background



This preview shows how the XYZ color 11.2299, 11.1921, 8.4059 looks on a white background.

Color Contrast Check

Large Text (above 18pt) WCAG AA ✓ Pass

Any Text WCAG AA ✓ Pass

Large Text (above 18pt) WCAG AAA ✓ Pass

Any Text WCAG AAA × Fail

Black Background



This preview shows how the XYZ color 11.2299, 11.1921, 8.4059 looks on a black background.

Color Contrast Check

Large Text (above 18pt) WCAG AA ✓ Pass

Any Text WCAG AA × Fail

Large Text (above 18pt) WCAG AAA × Fail

Any Text WCAG AAA × Fail

If you want to check with other color combinations, try the [Color Contrast Checker](#).

XYZ 11.2299, 11.1921, 8.4059

Background



This preview shows how black text looks on a background with the XYZ color 11.2299, 11.1921, 8.4059.



This preview shows how white text looks on a background with the XYZ color 11.2299, 11.1921,

Color Blindness Simulation

Color vision deficiency is a very complex topic, and I could not describe the different causes any better than Wikipedia does, so if you want to learn more, you should check out their [article about color blindness](#).

Dichromacy



Original Color

11.2299, 11.1921, 8.4059

Protanopia

10.5978, 11.2506, 8.6342

Deuteranopia

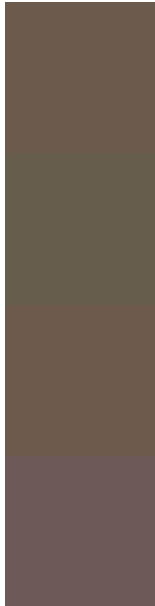
11.2673, 11.0853, 8.3833



Tritanopia

11.9857, 11.1207, 12.3413

Trichromacy



Original Color

11.2299, 11.1921, 8.4059

Protanomaly

10.8474, 11.2481, 8.6206

Deuteranomaly

11.2673, 11.0853, 8.3833

Tritanomaly

11.6405, 11.1005, 10.7616

Monochromacy



Original Color

11.2299, 11.1921, 8.4059

Achromatopsia

10.6392, 11.1932, 12.1894

Achromatomaly

10.7802, 11.1695, 10.6046

CSS Examples

Text

The CSS property to change the color of the text to XYZ 11.2299, 11.1921, 8.4059 is called "color". The color property can be set on classes, ids or directly on the HTML element.

This example shows how text in the color `rgb(108, 91, 76)` looks like.

```
.text, #text, p{  
    color:rgb(108, 91, 76)  
}
```

If you want to add a text shadow in that color use the text-shadow property, you can generate a text shadow directly with our [CSS Text Shadow Generator](#).

Here you see how black text with a 4 pixel rgb(108, 91, 76) colored shadow looks like.

```
.shadow{ text-shadow: 4px 4px 2px rgb(108, 91, 76) }
```

Border

The CSS property to change the border of an element to XYZ 11.2299, 11.1921, 8.4059 is called "border". The border property can be set on classes, ids or directly on the HTML element.

This example shows the color as border, it can be applied via the CSS property "border" or "border-color".

```
.border, #border, table{ border:4px solid rgb(108, 91, 76) }
```


If only the border color should be changed use the property `border-color`.

```
.border{ border-color:rgb(108, 91, 76) }
```

If you want to add a box shadow in that color use:

Here you see how a box with a 4 pixel `rgb(108, 91, 76)` colored shadow looks like.

```
.boxshadow{ -moz-box-shadow:4px 4px 4px  
4px rgb(108, 91, 76); -webkit-box-  
shadow:4px 4px 4px 4px rgb(108, 91, 76);  
box-shadow:4px 4px 4px 4px rgb(108, 91,  
76) }
```

Background

The CSS property to change the background color of an element to XYZ 11.2299, 11.1921, 8.4059 is called "background". The background property can be set on classes, ids or directly on the HTML element.

```
.background, #background, body{  
background: rgb(108, 91, 76) }
```

If only the background color should be changed can be used:

```
.background{ background-color: rgb(108, 91,  
76) }
```

This example shows the color as background, it is applied via the CSS property "background".

To optimize and compress your CSS code, you can use our [online CSS compressor and optimizer](#) based on csstidy. If you want to create a linear or radial gradient as background or border, check our [CSS Gradient Generator](#).

Hey! You found this booklet interesting? Support Converting Colors with the new Membership Option!

The pro membership hides all ads, plus gives you double the colors in the color bucket, and more awesome pro features!

[Learn more, Memberships starting at \\$2.50/m!](#)

**Follow me
on Twitter!**

@ConvertingColor