

Converting Colors

XYZ(11.3521, 10.1709, 9.6775)

Have a look what the booklet for
XYZ(11.3521, 10.1709, 9.6775)
contains.

XYZ(11.2996, 10.1194, 9.7452)	3
<i>Conversions</i>	4
<i>Details</i>	6
<i>Harmonies</i>	12
<i>Previews</i>	24
<i>Color Blindness Simulation</i>	28
<i>CSS Examples</i>	31

Color

**XYZ(11.2996, 10.1194,
9.7452)**

Conversions

Conversions Part 1

Format	Color
Hex	705254
RGB	112, 82, 84
RGB Percent	44%, 32%, 33%
CMY	0.5608, 0.6784, 0.6706
CMYK	0.00, 0.27, 0.25, 0.56
HSL	356°, 15%, 38%
HSV	356°, 27%, 44%
XYZ	11.2996, 10.1194, 9.7452
YIQ	91.1980, 17.2380, 6.9820

Conversions

Conversions Part 2

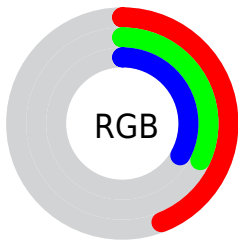
Format	Color
RYB	112, 82, 84
Decimal	7361108
CIELab	38.06, 12.86, 3.74
CIElCh	38, 13.387, 16.211
Yxy	10.1194, 0.3626, 0.3247
Android (android.graphics.Color)	4285551188 (0xFF705254)
YUV	91.1980, -3.5486, 18.2434
Hunter-Lab	31.8110, 7.7358, 4.1044

Details

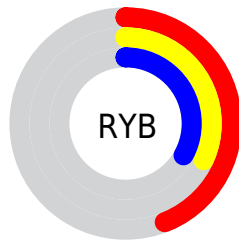
The XYZ color **11.2996, 10.1194, 9.7452** is a dark color, and the websafe version is hex **996666**. A complement of this color would be **12.0887, 14.5082, 16.9157**, and the grayscale version is **9.9943, 10.5147, 11.4506**.

A 20% lighter version of the original color is **27.7947, 26.0885, 25.7609**, and **3.0777, 2.5264, 2.2449** is the 20% darker color. If you saturate the color by 10%, you get **10.1436, 8.4145, 7.4883**, and if you desaturate by 10%, it is **12.6551, 12.1255, 12.3704**.

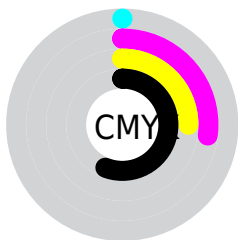
Distribution



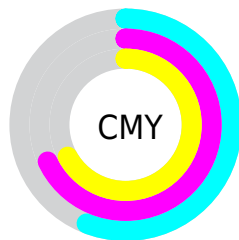
- Red (44%)
- Green (32%)
- Blue (33%)



- Red (44%)
- Yellow (32%)
- Blue (33%)



- Cyan (0%)
- Magenta (27%)
- Yellow (25%)
- Black (56%)



- Cyan (56%)
- Magenta (68%)
- Yellow (67%)

Brightness & Saturation Gradients

These gradients show how the XYZ color 11.2996, 10.1194, 9.7452 changes by changing the brightness by 10 percent. The first figure shows a shift by +10% for each color and the second figure -10%.

Similar to the brightness gradients but the following saturation gradients show a change of the XYZ color 11.2996, 10.1194, 9.7452 by changing the saturation by 10% instead.

■ 11.2996, 10.1194,
9.7452

■ 11.2996, 10.1194,
9.7452

193.5778,
191.5221, 199.2620

■ 6.3375, 5.4782,
5.1270

■ 27.8409, 26.0198,
25.9154

■ 3.0940, 2.5305,
2.2619

■ 40.1509, 38.0479,
38.3045

■ 1.2037, 0.8918,
0.7098

■ 55.6408, 53.3069,
54.1209

■ 0.1092, 0.0000,
0.0000

■ 74.6761, 72.1815,
73.7831

■ 0.0000, 0.0000,
0.0000

■ 97.6221, 95.0559,
97.7099

124.8441,

122.3145, 126.3196

156.7075,
154.3418, 160.0308

■ 11.2996, 10.1194,
9.7452

■ 11.2996, 10.1194,
9.7452

■ 10.1436, 8.4145,
7.4883

■ 12.6551, 12.1255,
12.3704

■ 9.1770, 6.9949,
5.5827

■ 14.2182, 14.4447,
15.3788

■ 8.3899, 5.8455,
4.0108

■ 15.9973, 17.0903,
18.7850

■ 7.7712, 4.9490,
2.7535

■ 18.0001, 20.0743,
22.6028

■ 7.3086, 4.2865,
1.7895

■ 20.2342, 23.4078,
26.8454

■ 6.9881, 3.8360,
1.0951

■ 22.7066, 27.1019,
31.5252

■ 6.7806, 3.5467,
0.6384

■ 25.4240, 31.1667,
36.6544

■ 6.7230, 3.4611,
0.5279

■ 28.3929, 35.6124,
42.2443

■ 31.6196, 40.4484,
48.3063

Harmonies

Analogous

The Analogous color harmony consists of three colors that are next to each other on the color wheel.



11.3198, 10.1194, 12.1892



11.2996, 10.1194, 9.7452



10.8117, 10.1194, 7.9338

Triad

The Triadic color harmony groups three colors that are evenly spaced from another and form a triangle on the color wheel.



11.2996, 10.1194, 9.7452



8.4703, 10.1194, 8.0484



9.2284, 10.1194, 16.3027

Complementary

The Complementary color scheme is a pair of colors which are on the opposite of each other on the color wheel.



11.2996, 10.1194, 9.7452



12.0887, 14.5082, 16.9157

Split Complementary

Split-complementary colors differ from the complementary color scheme. The scheme consists of three colors, the original color and two neighbors of the complement color.



8.5159, 10.1194, 14.8136



11.2996, 10.1194, 9.7452



8.0963, 10.1194, 9.9249

Square

The Square scheme is like the rectangle color scheme, but the four colors are evenly spaced on the color wheel.



11.2996, 10.1194, 9.7452



9.1627, 10.1194, 7.0590



8.1124, 10.1194, 12.3977



10.0885, 10.1194, 16.2354

Rectangle

The Rectangle color scheme consists of four colors that form a rectangle on the color wheel.



11.2996, 10.1194, 9.7452



10.3025, 10.1194, 7.2197



8.1124, 10.1194, 12.3977



8.9648, 10.1194, 15.9590

Sweetspot

The Sweet Spot groups the original color and five complimentary colors.



11.2999, 10.1199, 9.7454



24.5633, 24.7602, 26.2208



12.3726, 10.5199, 16.7077



5.8155, 5.8213, 6.1348



55.7959, 58.7016, 63.9261



6.5000, 6.8385, 7.4471

Same Dimension

The Same Dimension uses a secret algorithm to generate beautiful new colors.



11.2999, 10.1199, 9.7454



18.5804, 15.9026, 14.6439



12.2976, 12.2387, 9.6974



3.3927, 3.4048, 3.5946



7.7687, 3.9998, 0.5918



38.5784, 19.8767, 2.3123

Inverse Universe

The Inverse Universe completely reimagines the original color for something new.



11.2999, 10.1199, 9.7454



18.5804, 15.9026, 14.6439



10.8665, 11.8877, 17.0511



3.3927, 3.4048, 3.5946



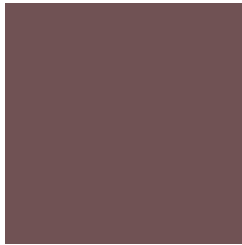
7.7687, 3.9998, 0.5918



38.5784, 19.8767, 2.3123

Previews

White Background



This preview shows how the XYZ color 11.2996, 10.1194, 9.7452 looks on a white background.

Color Contrast Check

Large Text (above 18pt) WCAG AA ✓ Pass

Any Text WCAG AA ✓ Pass

Large Text (above 18pt) WCAG AAA ✓ Pass

Any Text WCAG AAA × Fail

Black Background



This preview shows how the XYZ color 11.2996, 10.1194, 9.7452 looks on a black background.

Color Contrast Check

Large Text (above 18pt) WCAG AA ✓ Pass

Any Text WCAG AA × Fail

Large Text (above 18pt) WCAG AAA × Fail

Any Text WCAG AAA × Fail

If you want to check with other color combinations, try the [Color Contrast Checker](#).

XYZ 11.2996, 10.1194, 9.7452

Background



This preview shows how black text looks on a background with the XYZ color 11.2996, 10.1194, 9.7452.

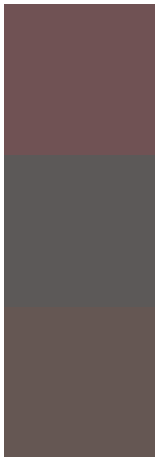


This preview shows how white text looks on a background with the XYZ color 11.2996, 10.1194,

Color Blindness Simulation

Color vision deficiency is a very complex topic, and I could not describe the different causes any better than Wikipedia does, so if you want to learn more, you should check out their [article about color blindness](#).

Dichromacy



Original Color

11.2996, 10.1194, 9.7452

Protanopia

9.7475, 10.1246, 10.6730

Deuteranopia

10.3364, 10.2076, 9.6091



Tritanopia

11.3860, 10.0342, 10.5692

Trichromacy



Original Color

11.2996, 10.1194, 9.7452

Protanomaly

10.1937, 9.9963, 10.4090

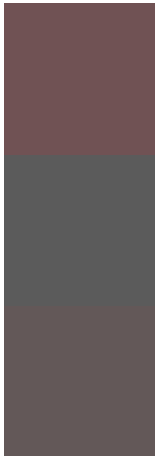
Deuteranomaly

10.6355, 10.1248, 9.5773

Tritanomaly

11.3448, 10.0177, 10.3525

Monochromacy



Original Color

11.2996, 10.1194, 9.7452

Achromatopsia

9.9438, 10.4616, 11.3927

Achromatomaly

10.3968, 10.3367, 10.6797

CSS Examples

Text

The CSS property to change the color of the text to XYZ 11.2996, 10.1194, 9.7452 is called "color". The color property can be set on classes, ids or directly on the HTML element.

This example shows how text in the color `rgb(112, 82, 84)` looks like.

```
.text, #text, p{  
    color:rgb(112, 82, 84)  
}
```

If you want to add a text shadow in that color use the text-shadow property, you can generate a text shadow directly with our [CSS Text Shadow Generator](#).

Here you see how black text with a 4 pixel rgb(112, 82, 84) colored shadow looks like.

```
.shadow{ text-shadow: 4px 4px 2px rgb(112, 82, 84) }
```

Border

The CSS property to change the border of an element to XYZ 11.2996, 10.1194, 9.7452 is called "border". The border property can be set on classes, ids or directly on the HTML element.

This example shows the color as border, it can be applied via the CSS property "border" or "border-color".

```
.border, #border, table{ border:4px solid rgb(112, 82, 84) }
```


If only the border color should be changed use the property border-color.

```
.border{ border-color:rgb(112, 82, 84) }
```

If you want to add a box shadow in that color use:

Here you see how a box with a 4 pixel rgb(112, 82, 84) colored shadow looks like.

```
.boxshadow{ -moz-box-shadow:4px 4px 4px  
4px rgb(112, 82, 84); -webkit-box-  
shadow:4px 4px 4px 4px rgb(112, 82, 84);  
box-shadow:4px 4px 4px 4px rgb(112, 82,  
84) }
```

Background

The CSS property to change the background color of an element to XYZ 11.2996, 10.1194, 9.7452 is called "background". The background property can be set on classes, ids or directly on the HTML element.

```
.background, #background, body{  
background: rgb(112, 82, 84) }
```

If only the background color should be changed can be used:

```
.background{ background-color: rgb(112, 82,  
84) }
```

This example shows the color as background, it is applied via the CSS property "background".

To optimize and compress your CSS code, you can use our [online CSS compressor and optimizer](#) based on csstidy. If you want to create a linear or radial gradient as background or border, check our [CSS Gradient Generator](#).

Hey! You found this booklet interesting? Support Converting Colors with the new Membership Option!

The pro membership hides all ads, plus gives you double the colors in the color bucket, and more awesome pro features!

[Learn more, Memberships starting at \\$2.50/m!](#)

**Follow me
on Twitter!**

@ConvertingColor