

Converting Colors

XYZ(11.6113, 10.6581, 11.5071)

Have a look what the booklet for
XYZ(11.6113, 10.6581, 11.5071)
contains.

XYZ(11.6900, 10.7433, 11.5827)	3
<i>Conversions</i>	4
<i>Details</i>	6
<i>Harmonies</i>	12
<i>Previews</i>	24
<i>Color Blindness Simulation</i>	28
<i>CSS Examples</i>	31

Color

**XYZ(11.6900, 10.7433,
11.5827)**

Conversions

Conversions Part 1

Format	Color
Hex	6E565C
RGB	110, 86, 92
RGB Percent	43%, 34%, 36%
CMY	0.5686, 0.6627, 0.6392
CMYK	0.00, 0.22, 0.16, 0.57
HSL	345°, 12%, 38%
HSV	345°, 22%, 43%
XYZ	11.6900, 10.7433, 11.5827
YIQ	93.8600, 12.3780, 6.9540

Conversions

Conversions Part 2

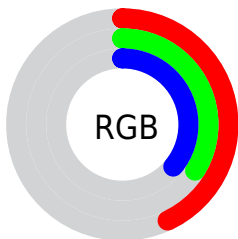
Format	Color
R _Y B	110, 86, 92
Decimal	7231068
CIE Lab	39.14, 10.96, 0.31
CIE LCh	39, 10.966, 1.633
Yxy	10.7433, 0.3437, 0.3158
Android (android.graphics.Color)	4285421148 (0xFF6E565C)
YUV	93.8600, -0.9170, 14.1548
Hunter-Lab	32.7770, 6.3028, 1.9920

Details

The XYZ color **11.6900, 10.7433, 11.5827** is a dark color, and the websafe version is hex **666666**. A complement of this color would be **11.9129, 14.1301, 15.1971**, and the grayscale version is **10.6066, 11.1589, 12.1521**.

A 20% lighter version of the original color is **28.5869, 27.2427, 29.3429**, and **3.2727, 2.8073, 2.9541** is the 20% darker color. If you saturate the color by 10%, you get **10.5372, 8.9837, 9.5148**, and if you desaturate by 10%, it is **13.0179, 12.7899, 13.9031**.

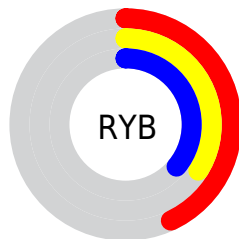
Distribution



Red (43%)

Green (34%)

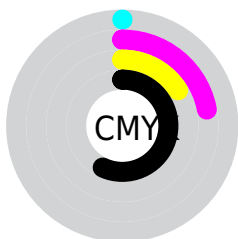
Blue (36%)



Red (43%)

Yellow (34%)

Blue (36%)

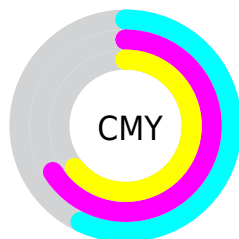


Cyan (0%)

Magenta (22%)

Yellow (16%)

Black (57%)



Cyan (57%)

Magenta (66%)

Yellow (64%)

Brightness & Saturation Gradients

These gradients show how the XYZ color 11.6900, 10.7433, 11.5827 changes by changing the brightness by 10 percent. The first figure shows a shift by +10% for each color and the second figure -10%.

Similar to the brightness gradients but the following saturation gradients show a change of the XYZ color 11.6900, 10.7433, 11.5827 by changing the saturation by 10% instead.

■ 11.6900, 10.7433,
11.5827

■ 11.6900, 10.7433,
11.5827

196.1542,
195.8979, 212.5017

■ 6.6037, 5.8945,
6.3411

■ 28.5510, 27.1845,
29.3857

■ 3.2596, 2.7810,
2.9815

■ 41.0564, 39.5457,
42.7842

■ 1.2925, 1.0185,
1.0852

■ 56.7655, 55.1798,
59.7388

■ 0.1776, 0.0000,
0.0000

■ 76.0437, 74.4712,
80.6680

■ 0.0000, 0.0000,
0.0000

■ 99.2563, 97.8043,
105.9903

126.7686,

125.5635, 136.1244

158.9462,
158.1333, 171.4886

■ 11.6900, 10.7433,
11.5827

■ 11.6900, 10.7433,
11.5827

■ 10.5372, 8.9837,
9.5148

■ 13.0179, 12.7899,
13.9031

■ 9.5512, 7.4970,
7.6901

■ 14.5270, 15.1342,
16.4835

■ 8.7243, 6.2697,
6.0996

■ 16.2241, 17.7880,
19.3320

■ 8.0479, 5.2869,
4.7335

■ 18.1155, 20.7619,
22.4561

■ 7.5125, 4.5319,
3.5815

■ 20.2071, 24.0663,
25.8630

■ 7.1075, 3.9862,
2.6320

■ 22.5047, 27.7108,
29.5597

■ 6.8205, 3.6274,
1.8726

■ 25.0137, 31.7048,
33.5529

■ 6.6341, 3.3965,
1.3729

■ 27.7394, 36.0574,
37.8490

■ 30.6869, 40.7771,
42.4543

Harmonies

Analogous

The Analogous color harmony consists of three colors that are next to each other on the color wheel.



11.5059, 10.7433, 13.7280



11.6900, 10.7433, 11.5827



11.4623, 10.7433, 9.7007

Triad

The Triadic color harmony groups three colors that are evenly spaced from another and form a triangle on the color wheel.



11.6900, 10.7433, 11.5827



9.4878, 10.7433, 8.5789



9.5543, 10.7433, 15.6327

Complementary

The Complementary color scheme is a pair of colors which are on the opposite of each other on the color wheel.



11.6900, 10.7433, 11.5827



11.9129, 14.1301, 15.1971

Split Complementary

Split-complementary colors differ from the complementary color scheme. The scheme consists of three colors, the original color and two neighbors of the complement color.



9.0546, 10.7433, 13.9514



11.6900, 10.7433, 11.5827



9.0174, 10.7433, 9.8781

Square

The Square scheme is like the rectangle color scheme, but the four colors are evenly spaced on the color wheel.



11.6900, 10.7433, 11.5827



10.1710, 10.7433, 8.1004



8.8627, 10.7433, 11.8133



10.2515, 10.7433, 16.2278

Rectangle

The Rectangle color scheme consists of four colors that form a rectangle on the color wheel.



11.6900, 10.7433, 11.5827



11.1137, 10.7433, 8.8026



8.8627, 10.7433, 11.8133



9.3589, 10.7433, 15.1666

Sweetspot

The Sweet Spot groups the original color and five complimentary colors.



11.6903, 10.7438, 11.5829



24.0483, 24.3010, 26.4565



11.8516, 10.7250, 16.1975



5.5746, 5.6215, 6.1196



54.2243, 57.0482, 62.1254



6.0569, 6.3724, 6.9395

Same Dimension

The Same Dimension uses a secret algorithm to generate beautiful new colors.



11.6903, 10.7438, 11.5829



19.5051, 17.2991, 18.5159



11.9377, 11.6417, 10.4226



3.4156, 3.4139, 3.7150



7.9587, 4.0759, 1.5924



39.3458, 20.1837, 6.3534

Inverse Universe

The Inverse Universe completely reimagines the original color for something new.



11.6903, 10.7438, 11.5829



19.5051, 17.2991, 18.5159



11.6030, 13.0053, 16.6508



3.4156, 3.4139, 3.7150



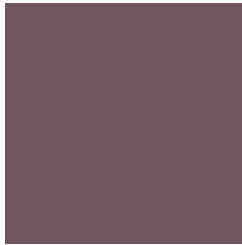
7.9587, 4.0759, 1.5924



39.3458, 20.1837, 6.3534

Previews

White Background



This preview shows how the XYZ color 11.6900, 10.7433, 11.5827 looks on a white background.

Color Contrast Check

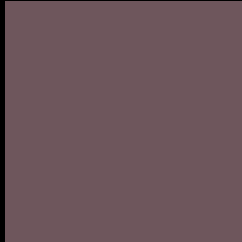
Large Text (above 18pt) WCAG AA ✓ Pass

Any Text WCAG AA ✓ Pass

Large Text (above 18pt) WCAG AAA ✓ Pass

Any Text WCAG AAA × Fail

Black Background



This preview shows how the XYZ color 11.6900, 10.7433, 11.5827 looks on a black background.

Color Contrast Check

Large Text (above 18pt) WCAG AA ✓ Pass

Any Text WCAG AA × Fail

Large Text (above 18pt) WCAG AAA × Fail

Any Text WCAG AAA × Fail

If you want to check with other color combinations, try the [Color Contrast Checker](#).

XYZ 11.6900, 10.7433, 11.5827

Background



This preview shows how black text looks on a background with the XYZ color 11.6900, 10.7433, 11.5827.



This preview shows how white text looks on a background with the XYZ color 11.6900, 10.7433,

Color Blindness Simulation

Color vision deficiency is a very complex topic, and I could not describe the different causes any better than Wikipedia does, so if you want to learn more, you should check out their [article about color blindness](#).

Dichromacy



Original Color

11.6900, 10.7433, 11.5827

Protanopia

10.4069, 10.8077, 12.3641

Deuteranopia

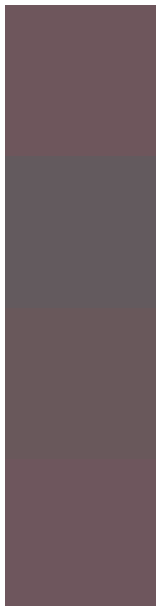
10.9402, 10.7249, 11.3910



Tritanopia

11.7340, 10.7609, 11.8145

Trichromacy



Original Color

11.6900, 10.7433, 11.5827

Protanomaly

10.8221, 10.7731, 12.0987

Deuteranomaly

11.2037, 10.7380, 11.3797

Tritanomaly

11.7340, 10.7609, 11.8145

Monochromacy



Original Color

11.6900, 10.7433, 11.5827

Achromatopsia

10.6392, 11.1932, 12.1894

Achromatomaly

10.9724, 10.9818, 11.8973

CSS Examples

Text

The CSS property to change the color of the text to XYZ 11.6900, 10.7433, 11.5827 is called "color". The color property can be set on classes, ids or directly on the HTML element.

This example shows how text in the color `rgb(110, 86, 92)` looks like.

```
.text, #text, p{  
    color:rgb(110, 86, 92)  
}
```

If you want to add a text shadow in that color use the text-shadow property, you can generate a text shadow directly with our [CSS Text Shadow Generator](#).

Here you see how black text with a 4 pixel rgb(110, 86, 92) colored shadow looks like.

```
.shadow{ text-shadow: 4px 4px 2px rgb(110, 86, 92) }
```

Border

The CSS property to change the border of an element to XYZ 11.6900, 10.7433, 11.5827 is called "border". The border property can be set on classes, ids or directly on the HTML element.

This example shows the color as border, it can be applied via the CSS property "border" or "border-color".

```
.border, #border, table{ border:4px solid rgb(110, 86, 92) }
```


If only the border color should be changed use the property border-color.

```
.border{ border-color:rgb(110, 86, 92) }
```

If you want to add a box shadow in that color use:

Here you see how a box with a 4 pixel rgb(110, 86, 92) colored shadow looks like.

```
.boxshadow{ -moz-box-shadow:4px 4px 4px  
4px rgb(110, 86, 92); -webkit-box-  
shadow:4px 4px 4px 4px rgb(110, 86, 92);  
box-shadow:4px 4px 4px 4px rgb(110, 86,  
92) }
```

Background

The CSS property to change the background color of an element to XYZ 11.6900, 10.7433, 11.5827 is called "background". The background property can be set on classes, ids or directly on the HTML element.

```
.background, #background, body{  
background: rgb(110, 86, 92) }
```

If only the background color should be changed can be used:

```
.background{ background-color: rgb(110, 86,  
92) }
```

This example shows the color as background, it is applied via the CSS property "background".

To optimize and compress your CSS code, you can use our [online CSS compressor and optimizer](#) based on csstidy. If you want to create a linear or radial gradient as background or border, check our [CSS Gradient Generator](#).

Hey! You found this booklet interesting? Support Converting Colors with the new Membership Option!

The pro membership hides all ads, plus gives you double the colors in the color bucket, and more awesome pro features!

[Learn more, Memberships starting at \\$2.50/m!](#)

**Follow me
on Twitter!**

@ConvertingColor