

Converting Colors

XYZ(113.7909, 86.1827,
96.2080)

Have a look what the booklet for
XYZ(113.7909, 86.1827, 96.2080)
contains.

XYZ(77.3091, 67.2715, 94.4980)	3
<i>Conversions</i>	4
<i>Details</i>	6
<i>Harmonies</i>	12
<i>Previews</i>	24
<i>Color Blindness Simulation</i>	28
<i>CSS Examples</i>	31

Color

**XYZ(77.3091, 67.2715,
94.4980)**

Conversions

Conversions Part 1

Format	Color
Hex	FFC4F4
RGB	255, 196, 244
RGB Percent	100%, 77%, 96%
CMY	0.0000, 0.2314, 0.0431
CMYK	0.00, 0.23, 0.04, 0.00
HSL	311°, 100%, 88%
HSV	311°, 23%, 100%
XYZ	77.3091, 67.2715, 94.4980
YIQ	219.1130, 19.7560, 27.4360

Conversions

Conversions Part 2

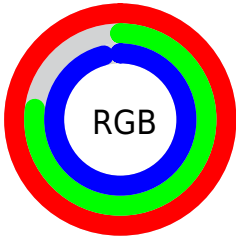
Format	Color
RYB	255, 196, 244
Decimal	16762100
CIELab	85.64, 28.62, -15.53
CIELCh	86, 32.566, 331.518
Yxy	67.2715, 0.3234, 0.2814
Android (android.graphics.Color)	4294952180 (0xFFFFC4F4)
YUV	219.1130, 12.2693, 31.4729
Hunter-Lab	82.0192, 24.7157, -10.8972

Details

The XYZ color **77.3091, 67.2715, 94.4980** is a light color, and the websafe version is hex **FFCCFF**. A complement of this color would be **69.7895, 87.7617, 72.2958**, and the grayscale version is **67.3197, 70.8256, 77.1290**.

A 20% lighter version of the original color is **94.4153, 98.7306, 108.6884**, and **42.0388, 34.9826, 52.1136** is the 20% darker color. If you saturate the color by 10%, you get **71.3262, 56.4460, 88.9887**, and if you desaturate by 10%, it is **84.2909, 80.0647, 100.4340**.

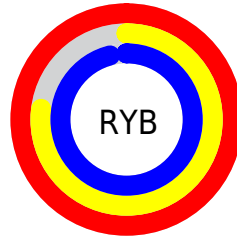
Distribution



Red (100%)

Green (77%)

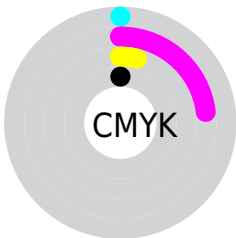
Blue (96%)



Red (100%)

Yellow (77%)

Blue (96%)

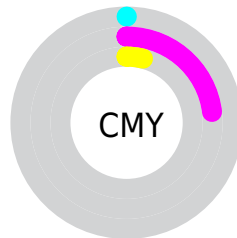


Cyan (0%)

Magenta (23%)

Yellow (4%)

Black (0%)



Cyan (0%)

Magenta (23%)

Yellow (4%)

Brightness & Saturation Gradients

These gradients show how the XYZ color 77.3091, 67.2715, 94.4980 changes by changing the brightness by 10 percent. The first figure shows a shift by +10% for each color and the second figure -10%.

Similar to the brightness gradients but the following saturation gradients show a change of the XYZ color 77.3091, 67.2715, 94.4980 by changing the saturation by 10% instead.

77.3091, 67.2715,
94.4980

77.3091, 67.2715,
94.4980

474.6931,
450.9106, 563.4999

57.8074, 49.3053,
71.1227

128.5462,
115.3094, 155.5605

41.8965, 34.8617,
51.9598

161.0124,
146.1498, 194.0847

29.2110, 23.5564,
36.5911

198.5308,
182.0505, 238.4957

19.3856, 15.0049,
24.5977

241.4667,
223.3957, 289.2118

12.0549, 8.8228,
15.5613

290.1855,
270.5699, 346.6518

6.8535, 4.6258,
9.0633

345.0526,

3.4162, 2.0294,

323.9576, 411.2341

4.6851

406.4334,
383.9430, 483.3773

■ 1.3775, 0.6245,
2.0082

■ 0.2401, 0.0000,
0.5603

■ 77.3091, 67.2715,
94.4980

■ 77.3091, 67.2715,
94.4980

■ 71.3262, 56.4460,
88.9887

■ 84.2909, 80.0647,
100.4340

■ 66.2885, 47.4814,
83.8847

■ 92.3134, 94.9094,
106.8086

■ 62.1434, 40.2729,
79.1687

95.0500, 100.0000,
108.9000

■ 58.8317, 34.7018,
74.8204

■ 56.2866, 30.6352,
70.8167

■ 54.4311, 27.9190,
67.1312

■ 53.1714, 26.3660,
63.7321

■ 52.5586, 25.7874,
61.5329

Harmonies

Analogous

The Analogous color harmony consists of three colors that are next to each other on the color wheel.



71.6869, 67.2715, 113.8648



77.3091, 67.2715, 94.4980



79.2786, 67.2715, 72.1709

Triad

The Triadic color harmony groups three colors that are evenly spaced from another and form a triangle on the color wheel.



77.3091, 67.2715, 94.4980



63.5626, 67.2715, 39.5396



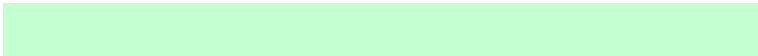
52.5383, 67.2715, 96.7357

Complementary

The Complementary color scheme is a pair of colors which are on the opposite of each other on the color wheel.



77.3091, 67.2715, 94.4980



69.7895, 87.7617, 72.2958

Split Complementary

Split-complementary colors differ from the complementary color scheme. The scheme consists of three colors, the original color and two neighbors of the complement color.



50.7188, 67.2715, 74.3342



77.3091, 67.2715, 94.4980



56.7715, 67.2715, 43.6593

Square

The Square scheme is like the rectangle color scheme, but the four colors are evenly spaced on the color wheel.



77.3091, 67.2715, 94.4980



70.9832, 67.2715, 42.8977



52.2077, 67.2715, 55.4481



57.3780, 67.2715, 115.3225

Rectangle

The Rectangle color scheme consists of four colors that form a rectangle on the color wheel.



77.3091, 67.2715, 94.4980



78.1429, 67.2715, 59.2668



52.2077, 67.2715, 55.4481



51.5708, 67.2715, 89.2695

Sweetspot

The Sweet Spot groups the original color and five complimentary colors.



77.3105, 67.2742, 94.4994



89.0864, 88.9228, 104.2917



63.4735, 59.9421, 102.8323



18.9634, 18.8391, 22.2399



0.0000, 0.0000, 0.0000



20.3446, 21.4041, 23.3091

Same Dimension

The Same Dimension uses a secret algorithm to generate beautiful new colors.



77.3105, 67.2742, 94.4994



74.2777, 61.7671, 91.7665



73.2068, 65.6327, 72.8894



18.6388, 18.2389, 21.9813



27.5152, 13.4954, 32.4270



2.7149, 1.3283, 3.3461

Inverse Universe

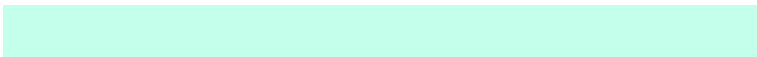
The Inverse Universe completely reimagines the original color for something new.



77.3105, 67.2742, 94.4994



74.2777, 61.7671, 91.7665



73.7131, 89.3312, 92.9573



18.6388, 18.2389, 21.9813



27.5152, 13.4954, 32.4270



2.7149, 1.3283, 3.3461

Previews

White Background



This preview shows how the XYZ color 77.3091, 67.2715, 94.4980 looks on a white background.

Color Contrast Check

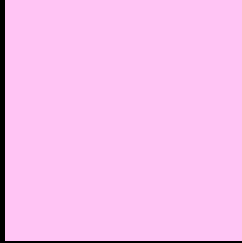
Large Text (above 18pt) WCAG AA × Fail

Any Text WCAG AA × Fail

Large Text (above 18pt) WCAG AAA × Fail

Any Text WCAG AAA × Fail

Black Background



This preview shows how the XYZ color 77.3091, 67.2715, 94.4980 looks on a black background.

Color Contrast Check

Large Text (above 18pt) WCAG AA ✓ Pass

Any Text WCAG AA ✓ Pass

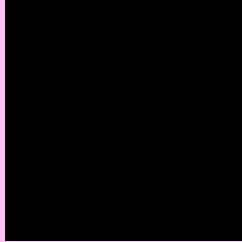
Large Text (above 18pt) WCAG AAA ✓ Pass

Any Text WCAG AAA ✓ Pass

If you want to check with other color combinations, try the [Color Contrast Checker](#).

XYZ 77.3091, 67.2715, 94.4980

Background



This preview shows how black text looks on a background with the XYZ color 77.3091, 67.2715, 94.4980.



This preview shows how white text looks on a background with the XYZ color 77.3091, 67.2715,

Color Blindness Simulation

Color vision deficiency is a very complex topic, and I could not describe the different causes any better than Wikipedia does, so if you want to learn more, you should check out their [article about color blindness](#).

Dichromacy



Original Color

77.3091, 67.2715, 94.4980

Protanopia

67.2978, 67.9303, 104.1726

Deuteranopia

68.9517, 67.5413, 93.4070



Tritanopia

73.0650, 67.2404, 74.0935

Trichromacy



Original Color

77.3091, 67.2715, 94.4980



Protanomaly

70.4659, 67.4380, 100.5697



Deuteranomaly

71.7022, 67.1492, 93.9760



Tritanomaly

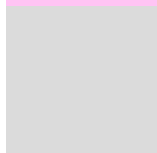
74.2958, 67.0333, 80.9744

Monochromacy



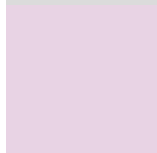
Original Color

77.3091, 67.2715, 94.4980



Achromatopsia

67.3311, 70.8376, 77.1421



Achromatomaly

70.5766, 69.3458, 83.0641

CSS Examples

Text

The CSS property to change the color of the text to XYZ 77.3091, 67.2715, 94.4980 is called "color". The color property can be set on classes, ids or directly on the HTML element.

This example shows how text in the color `rgb(255, 196, 244)` looks like.

```
.text, #text, p{  
    color:rgb(255, 196, 244)  
}
```

If you want to add a text shadow in that color use the text-shadow property, you can generate a text shadow directly with our [CSS Text Shadow Generator](#).

Here you see how black text with a 4 pixel rgb(255, 196, 244) colored shadow looks like.

```
.shadow{ text-shadow: 4px 4px 2px rgb(255, 196, 244) }
```

Border

The CSS property to change the border of an element to XYZ 77.3091, 67.2715, 94.4980 is called "border". The border property can be set on classes, ids or directly on the HTML element.

This example shows the color as border, it can be applied via the CSS property "border" or "border-color".

```
.border, #border, table{ border:4px solid rgb(255, 196, 244) }
```


If only the border color should be changed use the property `border-color`.

```
.border{ border-color:rgb(255, 196, 244) }
```

If you want to add a box shadow in that color use:

Here you see how a box with a 4 pixel `rgb(255, 196, 244)` colored shadow looks like.

```
.boxshadow{ -moz-box-shadow:4px 4px 4px 4px rgb(255, 196, 244); -webkit-box-shadow:4px 4px 4px 4px rgb(255, 196, 244); box-shadow:4px 4px 4px 4px rgb(255, 196, 244) }
```

Background

The CSS property to change the background color of an element to XYZ 77.3091, 67.2715, 94.4980 is called "background". The background property can be set on classes, ids or directly on the HTML element.

```
.background, #background, body{  
background: rgb(255, 196, 244) }
```

If only the background color should be changed can be used:

```
.background{ background-color: rgb(255,  
196, 244) }
```

This example shows the color as background, it is applied via the CSS property "background".

To optimize and compress your CSS code, you can use our [online CSS compressor and optimizer](#) based on csstidy. If you want to create a linear or radial gradient as background or border, check our [CSS Gradient Generator](#).

Hey! You found this booklet interesting? Support Converting Colors with the new Membership Option!

The pro membership hides all ads, plus gives you double the colors in the color bucket, and more awesome pro features!

[Learn more, Memberships starting at \\$2.50/m!](#)

**Follow me
on Twitter!**

@ConvertingColor