

# Converting Colors

XYZ(114.0547, 89.2079,  
152.8764)

Have a look what the booklet for  
XYZ(114.0547, 89.2079, 152.8764)  
contains.

<b>XYZ(81.8459, 73.5918, 104.4986)</b> .....	3
<b><i>Conversions</i></b> .....	4
<b><i>Details</i></b> .....	6
<b><i>Harmonies</i></b> .....	12
<b><i>Previews</i></b> .....	24
<b><i>Color Blindness Simulation</i></b> .....	28
<b><i>CSS Examples</i></b> .....	31

# Color

**XYZ(81.8459, 73.5918,  
104.4986)**

# Conversions

## Conversions Part 1

Format	Color
Hex	FFD0FF
RGB	255, 208, 255
RGB Percent	100%, 82%, 100%
CMY	0.0000, 0.1843, 0.0000
CMYK	0.00, 0.18, 0.00, 0.00
HSL	300°, 100%, 91%
HSV	300°, 18%, 100%
XYZ	81.8459, 73.5918, 104.4986
YIQ	227.4110, 12.9250, 24.5810

# Conversions

## Conversions Part 2

<b>Format</b>	<b>Color</b>
<a href="#">RYB</a>	255, 208, 255
Decimal	16765183
CIELab	88.73, 24.27, -16.71
CIELCh	89, 29.467, 325.450
Yxy	73.5918, 0.3149, 0.2831
Android (android.graphics.Color)	4294955263 (0xFFFFD0FF)
YUV	227.4110, 13.6014, 24.1956
Hunter-Lab	85.7857, 20.1774, -12.1733

# Details

The XYZ color **81.8459, 73.5918, 104.4986** is a light color, and the websafe version is hex **FFCCFF**. A complement of this color would be **73.1600, 89.4851, 73.0947**, and the grayscale version is **73.2117, 77.0244, 83.8796**.

A 20% lighter version of the original color is **95.0500, 100.0000, 108.9000**, and **44.8730, 38.8654, 58.5628** is the 20% darker color. If you saturate the color by 10%, you get **76.1217, 62.1435, 102.5906**, and if you desaturate by 10%, it is **88.5723, 87.0446, 106.7408**.

# Distribution



- Red (100%)
- Green (82%)
- Blue (100%)



- Red (100%)
- Yellow (82%)
- Blue (100%)



- Cyan (0%)
- Magenta (18%)
- Yellow (0%)
- Black (0%)



- Cyan (0%)
- Magenta (18%)
- Yellow (0%)

# Brightness & Saturation Gradients

These gradients show how the XYZ color 81.8459, 73.5918, 104.4986 changes by changing the brightness by 10 percent. The first figure shows a shift by +10% for each color and the second figure -10%.

Similar to the brightness gradients but the following saturation gradients show a change of the XYZ color 81.8459, 73.5918, 104.4986 by changing the saturation by 10% instead.



81.8459, 73.5918,  
104.4986

81.8459, 73.5918,  
104.4986

489.7744,  
473.0633, 595.8907

61.5522, 54.4600,  
79.4250

134.8948,  
124.3170, 169.4313

44.9252, 38.9696,  
58.7220

168.3808,  
156.6792, 210.1275

31.5995, 26.7360,  
41.9708

206.9948,  
194.2203, 256.8683

21.2099, 17.3751,  
28.7530

251.1024,  
237.3247, 310.0723

13.3908, 10.5023,  
18.6501

301.0687,  
286.3768, 370.1580

7.7771, 5.7332,  
11.2435

357.2593,

4.0032, 2.6836,

341.7610, 437.5439

6.1146

420.0394,  
403.8617, 512.6487

■ 1.7040, 0.9688,  
2.8450

■ 0.4587, 0.0000,  
1.0160

■ 81.8459, 73.5918,  
104.4986

■ 81.8459, 73.5918,  
104.4986

■ 76.1217, 62.1435,  
102.5906

■ 88.5723, 87.0446,  
106.7408

■ 71.3480, 52.5959,  
100.9993

95.0500, 100.0000,  
108.9000

■ 67.4744, 44.8488,  
99.7081

■ 64.4446, 38.7893,  
98.6982

■ 62.1958, 34.2917,  
97.9486

■ 60.6565, 31.2129,  
97.4355

■ 59.7419, 29.3837,  
97.1306

■ 59.3335, 28.5670,  
96.9945

■ 59.2900, 28.4800,  
96.9800

# Harmonies

## Analogous

The Analogous color harmony consists of three colors that are next to each other on the color wheel.



75.9996, 73.5918, 121.0264



81.8459, 73.5918, 104.4986



84.5088, 73.5918, 83.2811

# Triad

The Triadic color harmony groups three colors that are evenly spaced from another and form a triangle on the color wheel.



81.8459, 73.5918, 104.4986



71.0389, 73.5918, 47.0406



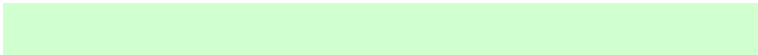
58.2933, 73.5918, 98.1964

# Complementary

The Complementary color scheme is a pair of colors which are on the opposite of each other on the color wheel.



81.8459, 73.5918, 104.4986



73.1600, 89.4851, 73.0947

# Split Complementary

Split-complementary colors differ from the complementary color scheme. The scheme consists of three colors, the original color and two neighbors of the complement color.



57.1617, 73.5918, 77.0574



81.8459, 73.5918, 104.4986



64.2242, 73.5918, 49.6705

# Square

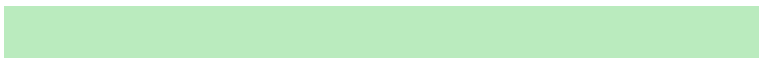
The Square scheme is like the rectangle color scheme, but the four colors are evenly spaced on the color wheel.



81.8459, 73.5918, 104.4986



78.0060, 73.5918, 51.9672



59.2608, 73.5918, 59.8772



62.4627, 73.5918, 116.9762



# Rectangle

The Rectangle color scheme consists of four colors that form a rectangle on the color wheel.



81.8459, 73.5918, 104.4986



83.9973, 73.5918, 70.1261



59.2608, 73.5918, 59.8772



57.5576, 73.5918, 91.0405

# Sweetspot

The Sweet Spot groups the original color and five complimentary colors.



81.8473, 73.5946, 104.4991



90.3618, 90.6237, 107.3373



66.6214, 65.7453, 103.7865



19.2369, 19.1886, 22.9398



0.0000, 0.0000, 0.0000



20.3446, 21.4041, 23.3091



# Same Dimension

The Same Dimension uses a secret algorithm to generate beautiful new colors.



81.8473, 73.5946, 104.4991



79.6904, 69.2808, 103.7801



78.2923, 72.1726, 85.7785



18.7928, 18.3004, 22.7918



30.9803, 14.8814, 50.6741



3.0164, 1.4490, 4.9340



# Inverse Universe

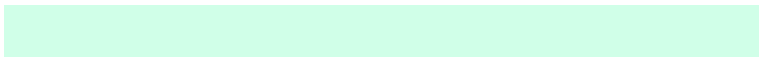
The Inverse Universe completely reimagines the original color for something new.



81.8473, 73.5946, 104.4991



79.6904, 69.2808, 103.7801



76.2690, 90.7287, 89.4668



18.7928, 18.3004, 22.7918



30.9803, 14.8814, 50.6741



3.0164, 1.4490, 4.9340



# Previews

## White Background



This preview shows how the XYZ color 81.8459, 73.5918, 104.4986 looks on a white background.

## Color Contrast Check

Large Text (above 18pt) WCAG AA × Fail

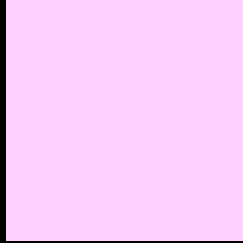
Any Text WCAG AA × Fail

Large Text (above 18pt) WCAG AAA × Fail

Any Text WCAG AAA × Fail



# Black Background



This preview shows how the XYZ color 81.8459, 73.5918, 104.4986 looks on a black background.

## Color Contrast Check

Large Text (above 18pt) WCAG AA ✓ Pass

Any Text WCAG AA ✓ Pass

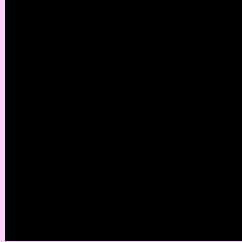
Large Text (above 18pt) WCAG AAA ✓ Pass

Any Text WCAG AAA ✓ Pass

If you want to check with other color combinations, try the [Color Contrast Checker](#).

# XYZ 81.8459, 73.5918, 104.4986

## Background



This preview shows how black text looks on a background with the XYZ color 81.8459, 73.5918, 104.4986.



This preview shows how white text looks on a background with the XYZ color 81.8459, 73.5918,



# Color Blindness Simulation

Color vision deficiency is a very complex topic, and I could not describe the different causes any better than Wikipedia does, so if you want to learn more, you should check out their [article about color blindness](#).

## Dichromacy



### Original Color

81.8459, 73.5918, 104.4986

### Protanopia

72.4902, 74.0615, 105.0824

### Deuteranopia

75.1756, 73.5406, 103.1611



## **Tritanopia**

77.7208, 73.7549, 84.2685

# Trichromacy



## Original Color

81.8459, 73.5918, 104.4986



## Protanomaly

75.4960, 73.6687, 104.8482



## Deuteranomaly

77.5326, 73.5996, 103.8857



## Tritanomaly

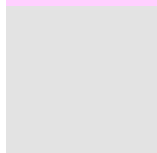
78.8718, 73.4570, 90.9106

# Monochromacy



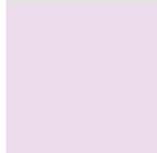
## Original Color

81.8459, 73.5918, 104.4986



## Achromatopsia

73.0128, 76.8151, 83.6517



## Achromatomaly

75.8043, 75.3053, 90.6608

# CSS Examples

## Text

The CSS property to change the color of the text to XYZ 81.8459, 73.5918, 104.4986 is called "color". The color property can be set on classes, ids or directly on the HTML element.

This example shows how text in the color `rgb(255, 208, 255)` looks like.

```
.text, #text, p{  
    color:rgb(255, 208, 255)  
}
```

If you want to add a text shadow in that color use the text-shadow property, you can generate a text shadow directly with our [CSS Text Shadow Generator](#).

Here you see how black text with a 4 pixel rgb(255, 208, 255) colored shadow looks like.

```
.shadow{ text-shadow: 4px 4px 2px rgb(255, 208, 255) }
```

## Border

The CSS property to change the border of an element to XYZ 81.8459, 73.5918, 104.4986 is called "border". The border property can be set on classes, ids or directly on the HTML element.

This example shows the color as border, it can be applied via the CSS property "border" or "border-color".

```
.border, #border, table{ border:4px solid rgb(255, 208, 255) }
```



If only the border color should be changed use the property border-color.

```
.border{ border-color:rgb(255, 208, 255) }
```

If you want to add a box shadow in that color use:

Here you see how a box with a 4 pixel rgb(255, 208, 255) colored shadow looks like.

```
.boxshadow{ -moz-box-shadow:4px 4px 4px  
4px rgb(255, 208, 255); -webkit-box-  
shadow:4px 4px 4px 4px rgb(255, 208, 255);  
box-shadow:4px 4px 4px 4px rgb(255, 208,  
255) }
```

# Background

The CSS property to change the background color of an element to XYZ 81.8459, 73.5918, 104.4986 is called "background". The background property can be set on classes, ids or directly on the HTML element.

```
.background, #background, body{  
background: rgb(255, 208, 255) }
```

If only the background color should be changed can be used:

```
.background{ background-color: rgb(255,  
208, 255) }
```

This example shows the color as background, it is applied via the CSS property "background".

To optimize and compress your CSS code, you can use our [online CSS compressor and optimizer](#) based on csstidy. If you want to create a linear or radial gradient as background or border, check our [CSS Gradient Generator](#).

Hey! You found this booklet interesting? Support Converting Colors with the new Membership Option!

The pro membership hides all ads, plus gives you double the colors in the color bucket, and more awesome pro features!

**[Learn more, Memberships starting at \\$2.50/m!](#)**

**Follow me  
on Twitter!**

@ConvertingColor