

Converting Colors

XYZ(114.9756, 79.4331,
313.3001)

Have a look what the booklet for
XYZ(114.9756, 79.4331, 313.3001)
contains.

XYZ(74.9590, 63.5717, 102.9275)	3
<i>Conversions</i>	4
<i>Details</i>	6
<i>Harmonies</i>	12
<i>Previews</i>	24
<i>Color Blindness Simulation</i>	28
<i>CSS Examples</i>	31

Color

**XYZ(74.9590, 63.5717,
102.9275)**

Conversions

Conversions Part 1

Format	Color
Hex	F8BDFF
RGB	248, 189, 255
RGB Percent	97%, 74%, 100%
CMY	0.0274, 0.2588, 0.0000
CMYK	0.03, 0.26, 0.00, 0.00
HSL	294°, 100%, 87%
HSV	294°, 26%, 100%
XYZ	74.9590, 63.5717, 102.9275
YIQ	214.1650, 13.9780, 33.0340

Conversions

Conversions Part 2

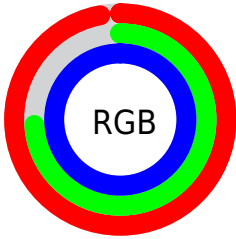
Format	Color
R _Y B	248, 189, 255
Decimal	16301567
CIE Lab	83.74, 32.03, -24.32
CIE LCh	84, 40.214, 322.796
Yxy	63.5717, 0.3104, 0.2633
Android (android.graphics.Color)	4294491647 (0xFFF8BDFE)
YUV	214.1650, 20.1317, 29.6733
Hunter-Lab	79.7319, 28.2840, -20.7264

Details

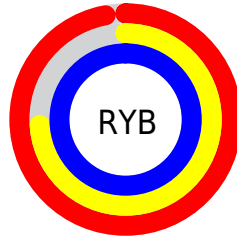
The XYZ color **74.9590, 63.5717, 102.9275** is a light color, and the websafe version is hex **FFCCFF**. A complement of this color would be **67.7119, 86.9306, 61.3578**, and the grayscale version is **63.8914, 67.2187, 73.2012**.

A 20% lighter version of the original color is **92.2458, 94.3915, 107.9653**, and **40.3429, 32.4815, 57.5693** is the 20% darker color. If you saturate the color by 10%, you get **68.9973, 53.0604, 101.2129**, and if you desaturate by 10%, it is **81.9025, 76.0241, 104.9651**.

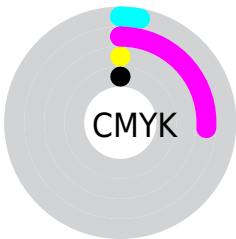
Distribution



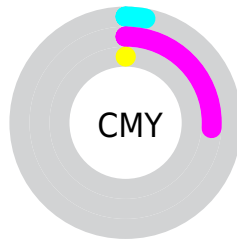
- Red (97%)
- Green (74%)
- Blue (100%)



- Red (97%)
- Yellow (74%)
- Blue (100%)



- Cyan (3%)
- Magenta (26%)
- Yellow (0%)
- Black (0%)



- Cyan (3%)
- Magenta (26%)
- Yellow (0%)

Brightness & Saturation Gradients

These gradients show how the XYZ color 74.9590, 63.5717, 102.9275 changes by changing the brightness by 10 percent. The first figure shows a shift by +10% for each color and the second figure -10%.

Similar to the brightness gradients but the following saturation gradients show a change of the XYZ color 74.9590, 63.5717, 102.9275 by changing the saturation by 10% instead.

74.9590, 63.5717,
102.9275

74.9590, 63.5717,
102.9275

466.7760,
437.6413, 590.8649

55.8734, 46.3039,
78.1172

125.2425,
109.9939, 167.2613

40.3380, 32.4857,
57.6532

157.1712,
139.9170, 207.6219

27.9876, 21.7327,
41.1171

194.1115,
174.8274, 254.0030

18.4567, 13.6606,
28.0902

236.4288,
215.1094, 306.8231

11.3800, 7.8850,
18.1540

284.4886,
261.1473, 366.5008

6.3922, 4.0215,
10.8900

338.6562,

3.1279, 1.6856,

313.3257, 433.4547

5.8797

399.2968,
372.0289, 508.1032

■ 1.2218, 0.4143,
2.7045

■ 0.1235, 0.0000,
0.9457

■ 74.9590, 63.5717,
102.9275

■ 74.9590, 63.5717,
102.9275

■ 68.9973, 53.0604,
101.2129

■ 81.9025, 76.0241,
104.9651

■ 63.9613, 44.3810,
99.8030

■ 89.8692, 90.5032,
107.3400

■ 59.7978, 37.4262,
98.6800

95.0500, 100.0000,
108.9000

■ 56.4456, 32.0737,
97.8236

■ 53.8358, 28.1857,
97.2107

■ 51.8874, 25.6006,
96.8144

■ 50.5005, 24.1182,
96.6013

■ 50.0319, 23.7073,
96.5467

Harmonies

Analogous

The Analogous color harmony consists of three colors that are next to each other on the color wheel.



67.2334, 63.5717, 124.3292



74.9590, 63.5717, 102.9275



78.8540, 63.5717, 75.4884

Triad

The Triadic color harmony groups three colors that are evenly spaced from another and form a triangle on the color wheel.



74.9590, 63.5717, 102.9275



62.5742, 63.5717, 31.3552



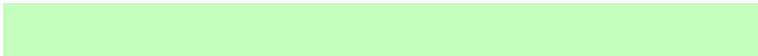
46.1010, 63.5717, 89.7894

Complementary

The Complementary color scheme is a pair of colors which are on the opposite of each other on the color wheel.



74.9590, 63.5717, 102.9275



67.7119, 86.9306, 61.3578

Split Complementary

Split-complementary colors differ from the complementary color scheme. The scheme consists of three colors, the original color and two neighbors of the complement color.



45.1141, 63.5717, 63.3063



74.9590, 63.5717, 102.9275



54.0887, 63.5717, 33.4097

Square

The Square scheme is like the rectangle color scheme, but the four colors are evenly spaced on the color wheel.



74.9590, 63.5717, 102.9275



71.2660, 63.5717, 37.2983



47.8993, 63.5717, 43.8132



50.7397, 63.5717, 115.5468

Rectangle

The Rectangle color scheme consists of four colors that form a rectangle on the color wheel.



74.9590, 63.5717, 102.9275



78.5114, 63.5717, 59.0111



47.8993, 63.5717, 43.8132



45.3509, 63.5717, 80.5405

Sweetspot

The Sweet Spot groups the original color and five complimentary colors.



74.9608, 63.5744, 102.9280



88.0925, 87.2599, 106.8076



58.9370, 57.8382, 102.6653



18.5917, 18.1968, 22.7824



0.0000, 0.0000, 0.0000



20.3446, 21.4041, 23.3091

Same Dimension

The Same Dimension uses a secret algorithm to generate beautiful new colors.



74.9608, 63.5744, 102.9280



71.7885, 57.9557, 102.0106



73.6799, 63.3541, 82.9890



18.5917, 18.1968, 22.7824



26.2194, 12.4271, 50.4513



2.6051, 1.2369, 4.9147

Inverse Universe

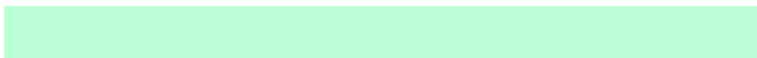
The Inverse Universe completely reimagines the original color for something new.



69.4031, 61.6433, 60.4673



65.4422, 55.7657, 52.8452



68.9241, 87.2101, 77.0223



18.0876, 18.0184, 19.0787



21.6776, 11.1603, 1.6866



2.1352, 1.0964, 0.2932

Previews

White Background



This preview shows how the XYZ color 74.9590, 63.5717, 102.9275 looks on a white background.

Color Contrast Check

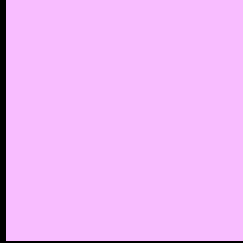
Large Text (above 18pt) WCAG AA × Fail

Any Text WCAG AA × Fail

Large Text (above 18pt) WCAG AAA × Fail

Any Text WCAG AAA × Fail

Black Background



This preview shows how the XYZ color 74.9590, 63.5717, 102.9275 looks on a black background.

Color Contrast Check

Large Text (above 18pt) WCAG AA ✓ Pass

Any Text WCAG AA ✓ Pass

Large Text (above 18pt) WCAG AAA ✓ Pass

Any Text WCAG AAA ✓ Pass

If you want to check with other color combinations, try the [Color Contrast Checker](#).

XYZ 74.9590, 63.5717, 102.9275

Background



This preview shows how black text looks on a background with the XYZ color 74.9590, 63.5717, 102.9275.



This preview shows how white text looks on a background with the XYZ color 74.9590, 63.5717,

Color Blindness Simulation

Color vision deficiency is a very complex topic, and I could not describe the different causes any better than Wikipedia does, so if you want to learn more, you should check out their [article about color blindness](#).

Dichromacy



Original Color

74.9590, 63.5717, 102.9275

Protanopia

63.3888, 63.7160, 103.5652

Deuteranopia

65.1760, 63.6239, 100.9410



Tritanopia

68.4679, 63.5632, 70.9476

Trichromacy



Original Color

74.9590, 63.5717, 102.9275



Protanomaly

67.0232, 63.1275, 103.2601



Deuteranomaly

68.5845, 63.6267, 101.5949



Tritanomaly

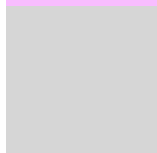
70.6036, 63.4181, 81.9185

Monochromacy



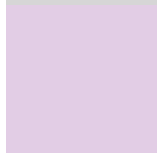
Original Color

74.9590, 63.5717, 102.9275



Achromatopsia

63.9157, 67.2443, 73.2291



Achromatomaly

67.3382, 65.4885, 83.2202

CSS Examples

Text

The CSS property to change the color of the text to XYZ 74.9590, 63.5717, 102.9275 is called "color". The color property can be set on classes, ids or directly on the HTML element.

This example shows how text in the color `rgb(248, 189, 255)` looks like.

```
.text, #text, p{  
    color:rgb(248, 189, 255)  
}
```

If you want to add a text shadow in that color use the text-shadow property, you can generate a text shadow directly with our [CSS Text Shadow Generator](#).

Here you see how black text with a 4 pixel rgb(248, 189, 255) colored shadow looks like.

```
.shadow{ text-shadow: 4px 4px 2px rgb(248, 189, 255) }
```

Border

The CSS property to change the border of an element to XYZ 74.9590, 63.5717, 102.9275 is called "border". The border property can be set on classes, ids or directly on the HTML element.

This example shows the color as border, it can be applied via the CSS property "border" or "border-color".

```
.border, #border, table{ border:4px solid rgb(248, 189, 255) }
```


If only the border color should be changed use the property `border-color`.

```
.border{ border-color:rgb(248, 189, 255) }
```

If you want to add a box shadow in that color use:

Here you see how a box with a 4 pixel `rgb(248, 189, 255)` colored shadow looks like.

```
.boxshadow{ -moz-box-shadow:4px 4px 4px  
4px rgb(248, 189, 255); -webkit-box-  
shadow:4px 4px 4px 4px rgb(248, 189, 255);  
box-shadow:4px 4px 4px 4px rgb(248, 189,  
255) }
```

Background

The CSS property to change the background color of an element to XYZ 74.9590, 63.5717, 102.9275 is called "background". The background property can be set on classes, ids or directly on the HTML element.

```
.background, #background, body{  
background: rgb(248, 189, 255) }
```

If only the background color should be changed can be used:

```
.background{ background-color: rgb(248,  
189, 255) }
```

This example shows the color as background, it is applied via the CSS property "background".

To optimize and compress your CSS code, you can use our [online CSS compressor and optimizer](#) based on csstidy. If you want to create a linear or radial gradient as background or border, check our [CSS Gradient Generator](#).

Hey! You found this booklet interesting? Support Converting Colors with the new Membership Option!

The pro membership hides all ads, plus gives you double the colors in the color bucket, and more awesome pro features!

[Learn more, Memberships starting at \\$2.50/m!](#)

**Follow me
on Twitter!**

@ConvertingColor