

Converting Colors

XYZ(12.2190, 11.3627, 7.9853)

Have a look what the booklet for
XYZ(12.2190, 11.3627, 7.9853)
contains.

XYZ(12.1970, 11.3254, 8.0217)	3
<i>Conversions</i>	4
<i>Details</i>	6
<i>Harmonies</i>	12
<i>Previews</i>	24
<i>Color Blindness Simulation</i>	28
<i>CSS Examples</i>	31

Color

**XYZ(12.1970, 11.3254,
8.0217)**

Conversions

Conversions Part 1

Format	Color
Hex	76584A
RGB	118, 88, 74
RGB Percent	46%, 35%, 29%
CMY	0.5373, 0.6549, 0.7098
CMYK	0.00, 0.25, 0.37, 0.54
HSL	19°, 23%, 38%
HSV	19°, 37%, 46%
XYZ	12.1970, 11.3254, 8.0217
YIQ	95.3740, 22.3740, 2.0060

Conversions

Conversions Part 2

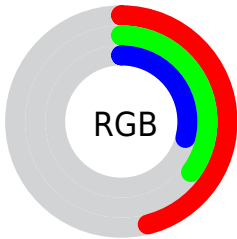
Format	Color
R_{YB}	118, 95, 74
Decimal	7755850
CIE Lab	40.12, 10.29, 12.92
CIE LCh	40, 16.517, 51.475
Yxy	11.3254, 0.3867, 0.3590
Android (android.graphics.Color)	4285945930 (0xFF76584A)
YUV	95.3740, -10.5374, 19.8430
Hunter-Lab	33.6532, 5.8009, 9.4247

Details

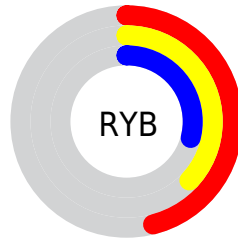
The XYZ color **12.1970, 11.3254, 8.0217** is a dark color, and the websafe version is hex **996666**. A complement of this color would be **11.0443, 12.6641, 19.0020**, and the grayscale version is **10.9880, 11.5603, 12.5891**.

A 20% lighter version of the original color is **29.4582, 28.2649, 22.6420**, and **3.4462, 2.9786, 1.6216** is the 20% darker color. If you saturate the color by 10%, you get **11.2119, 9.9328, 5.9126**, and if you desaturate by 10%, it is **13.3302, 12.8947, 10.5484**.

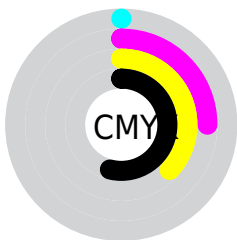
Distribution



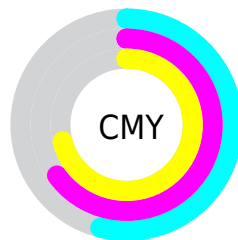
- Red (46%)
- Green (35%)
- Blue (29%)



- Red (46%)
- Yellow (37%)
- Blue (29%)



- Cyan (0%)
- Magenta (25%)
- Yellow (37%)
- Black (54%)



- Cyan (54%)
- Magenta (65%)
- Yellow (71%)

Brightness & Saturation Gradients

These gradients show how the XYZ color 12.1970, 11.3254, 8.0217 changes by changing the brightness by 10 percent. The first figure shows a shift by +10% for each color and the second figure -10%.

Similar to the brightness gradients but the following saturation gradients show a change of the XYZ color 12.1970, 11.3254, 8.0217 by changing the saturation by 10% instead.

■ 12.1970, 11.3254,
8.0217

■ 12.1970, 11.3254,
8.0217

199.4485,
199.8866, 185.8431

■ 6.9511, 6.2861,
4.0209

■ 29.4671, 28.2603,
22.5478

■ 3.4776, 3.0198,
1.6368

■ 42.2221, 40.9248,
33.9102

■ 1.4111, 1.1421,
0.3169

■ 58.2109, 56.8998,
48.5636

■ 0.2641, 0.0136,
0.0000

■ 77.7988, 76.5697,
66.9264

■ 0.0000, 0.0000,
0.0000

■ 101.3511,
100.3190, 89.4172

129.2333,

128.5319, 116.4545

161.8107,
161.5930, 148.4570

■ 12.1970, 11.3254,
8.0217

■ 12.1970, 11.3254,
8.0217

■ 11.2119, 9.9328,
5.9126

■ 13.3302, 12.8947,
10.5484

■ 10.3674, 8.7089,
4.1977

■ 14.6167, 14.6452,
13.5131

■ 9.6569, 7.6474,
2.8520

■ 16.0626, 16.5831,
16.9356

■ 9.0724, 6.7411,
1.8478

■ 17.6732, 18.7138,
20.8344

■ 8.6054, 5.9819,
1.1530

■ 19.4538, 21.0427,
25.2269

■ 8.2387, 5.3583,
0.6919

■ 21.4093, 23.5748,
30.1296

■ 8.1502, 5.2093,
0.5759

■ 23.5444, 26.3149,
35.5583

■ 25.8636, 29.2678,
41.5280

■ 28.3714, 32.4379,
48.0533

Harmonies

Analogous

The Analogous color harmony consists of three colors that are next to each other on the color wheel.



12.9494, 11.3254, 10.1612



12.1970, 11.3254, 8.0217



11.0946, 11.3254, 7.0815

Triad

The Triadic color harmony groups three colors that are evenly spaced from another and form a triangle on the color wheel.



12.1970, 11.3254, 8.0217



8.7279, 11.3254, 11.4188



11.5920, 11.3254, 19.1904

Complementary

The Complementary color scheme is a pair of colors which are on the opposite of each other on the color wheel.



12.1970, 11.3254, 8.0217



11.0443, 12.6641, 19.0020

Split Complementary

Split-complementary colors differ from the complementary color scheme. The scheme consists of three colors, the original color and two neighbors of the complement color.



10.4409, 11.3254, 19.6896



12.1970, 11.3254, 8.0217



8.8403, 11.3254, 14.7906

Square

The Square scheme is like the rectangle color scheme, but the four colors are evenly spaced on the color wheel.



12.1970, 11.3254, 8.0217



9.1300, 11.3254, 8.8017



9.4487, 11.3254, 17.9605



12.5831, 11.3254, 16.6975

Rectangle

The Rectangle color scheme consists of four colors that form a rectangle on the color wheel.



12.1970, 11.3254, 8.0217



10.3318, 11.3254, 7.1206



9.4487, 11.3254, 17.9605



11.2091, 11.3254, 19.6126

Sweetspot

The Sweet Spot groups the original color and five complimentary colors.



12.1973, 11.3259, 8.0219



27.1955, 27.7599, 27.2808



12.4222, 9.7501, 14.3418



6.1929, 6.3023, 6.1305



57.3938, 60.3827, 65.7568



6.9614, 7.3239, 7.9757

Same Dimension

The Same Dimension uses a secret algorithm to generate beautiful new colors.



12.1973, 11.3259, 8.0219



19.9033, 17.7353, 10.7926



14.2761, 15.4836, 8.7149



3.7703, 3.8736, 3.8912



8.8067, 5.6147, 0.6196



42.2227, 25.9739, 2.7881

Inverse Universe

The Inverse Universe completely reimagines the original color for something new.



11.0443, 12.6641, 19.0020



17.5477, 20.4483, 33.1590



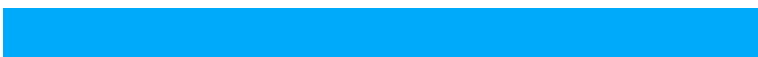
9.1165, 8.8086, 18.3594



3.6897, 3.9681, 4.6617



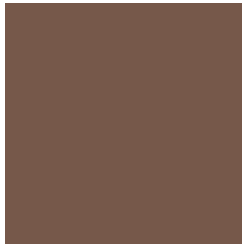
6.6653, 7.6703, 19.6718



31.6843, 35.7853, 95.5976

Previews

White Background



This preview shows how the XYZ color 12.1970, 11.3254, 8.0217 looks on a white background.

Color Contrast Check

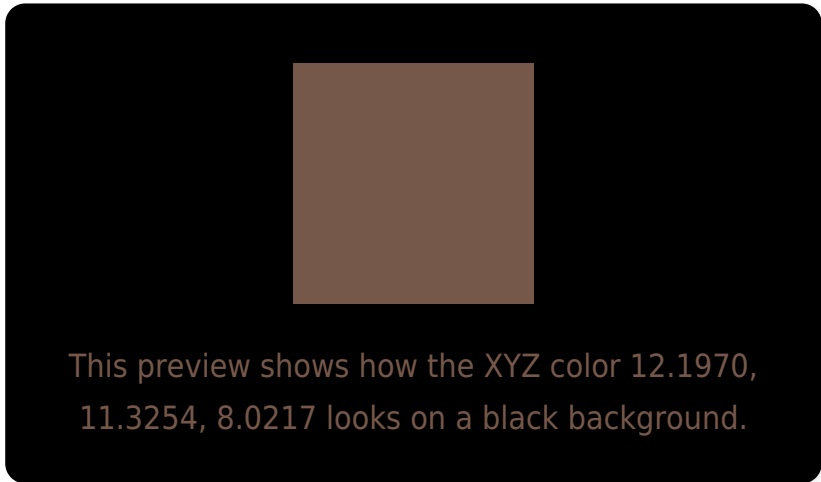
Large Text (above 18pt) WCAG AA ✓ Pass

Any Text WCAG AA ✓ Pass

Large Text (above 18pt) WCAG AAA ✓ Pass

Any Text WCAG AAA × Fail

Black Background



Color Contrast Check

Large Text (above 18pt) WCAG AA ✓ Pass

Any Text WCAG AA × Fail

Large Text (above 18pt) WCAG AAA × Fail

Any Text WCAG AAA × Fail

If you want to check with other color combinations, try the [Color Contrast Checker](#).

XYZ 12.1970, 11.3254, 8.0217

Background



This preview shows how black text looks on a background with the XYZ color 12.1970, 11.3254, 8.0217.

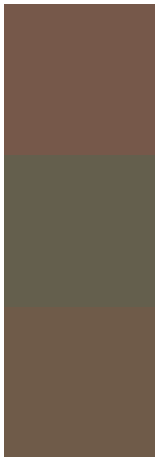


This preview shows how white text looks on a background with the XYZ color 12.1970, 11.3254,

Color Blindness Simulation

Color vision deficiency is a very complex topic, and I could not describe the different causes any better than Wikipedia does, so if you want to learn more, you should check out their [article about color blindness](#).

Dichromacy



Original Color

12.1970, 11.3254, 8.0217

Protanopia

10.6873, 11.4296, 8.6640

Deuteranopia

11.4992, 11.3427, 7.8866



Tritanopia

12.9260, 11.2628, 11.6179

Trichromacy



Original Color

12.1970, 11.3254, 8.0217

Protanomaly

11.1951, 11.3019, 8.4289

Deuteranomaly

11.7982, 11.3708, 7.8763

Tritanomaly

12.5752, 11.2334, 10.0998

Monochromacy



Original Color

12.1970, 11.3254, 8.0217

Achromatopsia

10.8771, 11.4435, 12.4620

Achromatomaly

11.1410, 11.2260, 10.5965

CSS Examples

Text

The CSS property to change the color of the text to XYZ 12.1970, 11.3254, 8.0217 is called "color". The color property can be set on classes, ids or directly on the HTML element.

This example shows how text in the color `rgb(118, 88, 74)` looks like.

```
.text, #text, p{  
    color:rgb(118, 88, 74)  
}
```

If you want to add a text shadow in that color use the text-shadow property, you can generate a text shadow directly with our [CSS Text Shadow Generator](#).

Here you see how black text with a 4 pixel rgb(118, 88, 74) colored shadow looks like.

```
.shadow{ text-shadow: 4px 4px 2px rgb(118, 88, 74) }
```

Border

The CSS property to change the border of an element to XYZ 12.1970, 11.3254, 8.0217 is called "border". The border property can be set on classes, ids or directly on the HTML element.

This example shows the color as border, it can be applied via the CSS property "border" or "border-color".

```
.border, #border, table{ border:4px solid rgb(118, 88, 74) }
```


If only the border color should be changed use the property `border-color`.

```
.border{ border-color:rgb(118, 88, 74) }
```

If you want to add a box shadow in that color use:

Here you see how a box with a 4 pixel `rgb(118, 88, 74)` colored shadow looks like.

```
.boxshadow{ -moz-box-shadow:4px 4px 4px  
4px rgb(118, 88, 74); -webkit-box-  
shadow:4px 4px 4px 4px rgb(118, 88, 74);  
box-shadow:4px 4px 4px 4px rgb(118, 88,  
74) }
```

Background

The CSS property to change the background color of an element to XYZ 12.1970, 11.3254, 8.0217 is called "background". The background property can be set on classes, ids or directly on the HTML element.

```
.background, #background, body{  
background: rgb(118, 88, 74) }
```

If only the background color should be changed can be used:

```
.background{ background-color: rgb(118, 88,  
74) }
```

This example shows the color as background, it is applied via the CSS property "background".

To optimize and compress your CSS code, you can use our [online CSS compressor and optimizer](#) based on csstidy. If you want to create a linear or radial gradient as background or border, check our [CSS Gradient Generator](#).

Hey! You found this booklet interesting? Support Converting Colors with the new Membership Option!

The pro membership hides all ads, plus gives you double the colors in the color bucket, and more awesome pro features!

[Learn more, Memberships starting at \\$2.50/m!](#)

**Follow me
on Twitter!**

@ConvertingColor