

Converting Colors

XYZ(12.2343, 11.4861, 11.4827)

Have a look what the booklet for
XYZ(12.2343, 11.4861, 11.4827)
contains.

XYZ(12.2266, 11.5124, 11.4752)	3
<i>Conversions</i>	4
<i>Details</i>	6
<i>Harmonies</i>	12
<i>Previews</i>	24
<i>Color Blindness Simulation</i>	28
<i>CSS Examples</i>	31

Color

**XYZ(12.2266, 11.5124,
11.4752)**

Conversions

Conversions Part 1

Format	Color
Hex	705A5B
RGB	112, 90, 91
RGB Percent	44%, 35%, 36%
CMY	0.5608, 0.6470, 0.6431
CMYK	0.00, 0.20, 0.19, 0.56
HSL	357°, 11%, 40%
HSV	357°, 20%, 44%
XYZ	12.2266, 11.5124, 11.4752
YIQ	96.6920, 12.7910, 4.9750

Conversions

Conversions Part 2

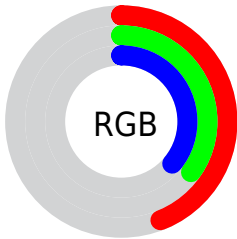
Format	Color
R_{YB}	112, 90, 91
Decimal	7363163
CIE Lab	40.43, 9.17, 2.82
CIE LCh	40, 9.592, 17.117
Yxy	11.5124, 0.3472, 0.3269
Android (android.graphics.Color)	4285553243 (0xFF705A5B)
YUV	96.6920, -2.8062, 13.4251
Hunter-Lab	33.9299, 4.9448, 3.6989

Details

The XYZ color **12.2266, 11.5124, 11.4752** is a dark color, and the websafe version is hex **666666**. A complement of this color would be **12.8804, 14.9100, 17.2388**, and the grayscale version is **11.2915, 11.8795, 12.9368**.

A 20% lighter version of the original color is **29.4956, 28.5718, 29.1596**, and **3.4887, 3.0808, 2.8934** is the 20% darker color. If you saturate the color by 10%, you get **10.9233, 9.5921, 8.9251**, and if you desaturate by 10%, it is **13.7386, 13.7448, 14.4195**.

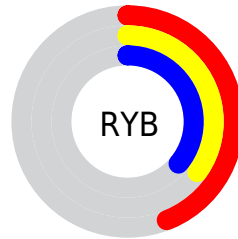
Distribution



Red (44%)

Green (35%)

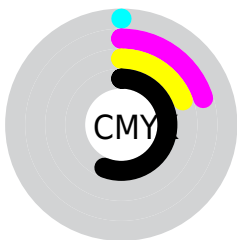
Blue (36%)



Red (44%)

Yellow (35%)

Blue (36%)

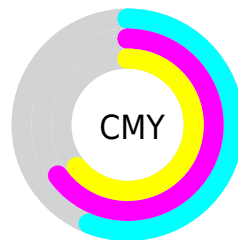


Cyan (0%)

Magenta (20%)

Yellow (19%)

Black (56%)



Cyan (56%)

Magenta (65%)

Yellow (64%)

Brightness & Saturation Gradients

These gradients show how the XYZ color 12.2266, 11.5124, 11.4752 changes by changing the brightness by 10 percent. The first figure shows a shift by +10% for each color and the second figure -10%.

Similar to the brightness gradients but the following saturation gradients show a change of the XYZ color 12.2266, 11.5124, 11.4752 by changing the saturation by 10% instead.

■ 12.2266, 11.5124,
11.4752

■ 12.2266, 11.5124,
11.4752

199.6391,
201.1500, 211.7524

■ 6.9715, 6.4126,
6.2692

■ 29.5204, 28.6039,
29.1856

■ 3.4905, 3.0976,
2.9381

■ 42.2899, 41.3643,
42.5271

■ 1.4181, 1.1829,
1.0631

■ 58.2948, 57.4471,
59.4175

■ 0.2691, 0.0477,
0.0000

■ 77.9006, 77.2366,
80.2754

■ 0.0000, 0.0000,
0.0000

■ 101.4725,
101.1173, 105.5193

129.3760,

129.4735, 135.5677

161.9765,
162.6896, 170.8393

■ 12.2266, 11.5124,
11.4752

■ 12.2266, 11.5124,
11.4752

■ 10.9233, 9.5921,
8.9251

■ 13.7386, 13.7448,
14.4195

■ 9.8188, 7.9685,
6.7516

■ 15.4670, 16.3007,
17.7729

■ 8.9034, 6.6273,
4.9373

■ 17.4201, 19.1927,
21.5505

■ 8.1666, 5.5524,
3.4628

■ 19.6056, 22.4326,
25.7664

■ 7.5967, 4.7260,
2.3069

■ 22.0309, 26.0312,
30.4340

■ 7.1807, 4.1282,
1.4461

■ 24.7028, 29.9992,
35.5661

■ 6.9036, 3.7361,
0.8536

■ 27.6281, 34.3466,
41.1753

■ 6.7165, 3.4655,
0.4718

■ 30.8132, 39.0832,
47.2732

■ 6.7100, 3.4559,
0.4593

■ 34.2643, 44.2183,
53.8714

Harmonies

Analogous

The Analogous color harmony consists of three colors that are next to each other on the color wheel.



12.2533, 11.5124, 13.3800



12.2266, 11.5124, 11.4752



11.8470, 11.5124, 10.0099

Triad

The Triadic color harmony groups three colors that are evenly spaced from another and form a triangle on the color wheel.



12.2266, 11.5124, 11.4752



10.0208, 11.5124, 10.1776



10.6561, 11.5124, 16.5077

Complementary

The Complementary color scheme is a pair of colors which are on the opposite of each other on the color wheel.



12.2266, 11.5124, 11.4752



12.8804, 14.9100, 17.2388

Split Complementary

Split-complementary colors differ from the complementary color scheme. The scheme consists of three colors, the original color and two neighbors of the complement color.



10.0847, 11.5124, 15.4527



12.2266, 11.5124, 11.4752



9.7281, 11.5124, 11.7265

Square

The Square scheme is like the rectangle color scheme, but the four colors are evenly spaced on the color wheel.



12.2266, 11.5124, 11.4752



10.5656, 11.5124, 9.3152



9.7510, 11.5124, 13.6582



11.3276, 11.5124, 16.4226

Rectangle

The Rectangle color scheme consists of four colors that form a rectangle on the color wheel.



12.2266, 11.5124, 11.4752



11.4533, 11.5124, 9.4202



9.7510, 11.5124, 13.6582



10.4465, 11.5124, 16.2704

Sweetspot

The Sweet Spot groups the original color and five complimentary colors.



12.2269, 11.5129, 11.4754



25.1490, 25.6445, 27.3005



13.1241, 11.8557, 16.9261



6.0088, 6.1121, 6.4946



55.7959, 58.7016, 63.9261



6.5000, 6.8385, 7.4471

Same Dimension

The Same Dimension uses a secret algorithm to generate beautiful new colors.



12.2269, 11.5129, 11.4754



20.2925, 18.4752, 17.8399



13.0755, 13.2785, 11.5473



3.3901, 3.4037, 3.5808



7.7547, 3.9943, 0.5184



38.5430, 19.8625, 2.1257

Inverse Universe

The Inverse Universe completely reimagines the original color for something new.



12.2269, 11.5129, 11.4754



20.2925, 18.4752, 17.8399



11.9027, 12.8664, 17.1855



3.3901, 3.4037, 3.5808



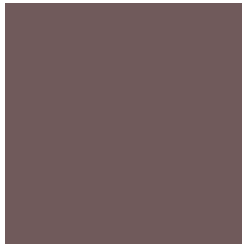
7.7547, 3.9943, 0.5184



38.5430, 19.8625, 2.1257

Previews

White Background



This preview shows how the XYZ color 12.2266, 11.5124, 11.4752 looks on a white background.

Color Contrast Check

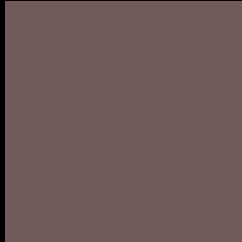
Large Text (above 18pt) WCAG AA ✓ Pass

Any Text WCAG AA ✓ Pass

Large Text (above 18pt) WCAG AAA ✓ Pass

Any Text WCAG AAA × Fail

Black Background



This preview shows how the XYZ color 12.2266, 11.5124, 11.4752 looks on a black background.

Color Contrast Check

Large Text (above 18pt) WCAG AA ✓ Pass

Any Text WCAG AA × Fail

Large Text (above 18pt) WCAG AAA × Fail

Any Text WCAG AAA × Fail

If you want to check with other color combinations, try the [Color Contrast Checker](#).

XYZ 12.2266, 11.5124, 11.4752

Background



This preview shows how black text looks on a background with the XYZ color 12.2266, 11.5124, 11.4752.

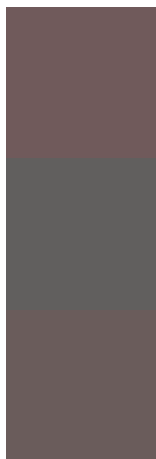


This preview shows how white text looks on a background with the XYZ color 12.2266, 11.5124,

Color Blindness Simulation

Color vision deficiency is a very complex topic, and I could not describe the different causes any better than Wikipedia does, so if you want to learn more, you should check out their [article about color blindness](#).

Dichromacy



Original Color

12.2266, 11.5124, 11.4752

Protanopia

11.0424, 11.5340, 12.2340

Deuteranopia

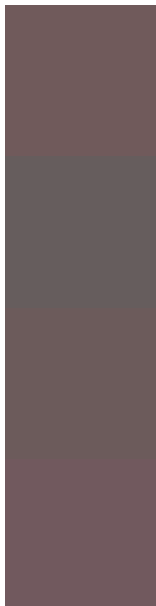
11.6593, 11.4738, 11.4977



Tritanopia

12.4938, 11.5000, 12.6276

Trichromacy



Original Color

12.2266, 11.5124, 11.4752

Protanomaly

11.3696, 11.4438, 11.9656

Deuteranomaly

11.8138, 11.4256, 11.4802

Tritanomaly

12.4028, 11.4636, 12.1487

Monochromacy



Original Color

12.2266, 11.5124, 11.4752

Achromatopsia

11.3621, 11.9538, 13.0177

Achromatomaly

11.5478, 11.6564, 12.4678

CSS Examples

Text

The CSS property to change the color of the text to XYZ 12.2266, 11.5124, 11.4752 is called "color". The color property can be set on classes, ids or directly on the HTML element.

This example shows how text in the color `rgb(112, 90, 91)` looks like.

```
.text, #text, p{  
    color:rgb(112, 90, 91)  
}
```

If you want to add a text shadow in that color use the text-shadow property, you can generate a text shadow directly with our [CSS Text Shadow Generator](#).

Here you see how black text with a 4 pixel rgb(112, 90, 91) colored shadow looks like.

```
.shadow{ text-shadow: 4px 4px 2px rgb(112, 90, 91) }
```

Border

The CSS property to change the border of an element to XYZ 12.2266, 11.5124, 11.4752 is called "border". The border property can be set on classes, ids or directly on the HTML element.

This example shows the color as border, it can be applied via the CSS property "border" or "border-color".

```
.border, #border, table{ border:4px solid rgb(112, 90, 91) }
```


If only the border color should be changed use the property `border-color`.

```
.border{ border-color:rgb(112, 90, 91) }
```

If you want to add a box shadow in that color use:

Here you see how a box with a 4 pixel `rgb(112, 90, 91)` colored shadow looks like.

```
.boxshadow{ -moz-box-shadow:4px 4px 4px  
4px rgb(112, 90, 91); -webkit-box-  
shadow:4px 4px 4px 4px rgb(112, 90, 91);  
box-shadow:4px 4px 4px 4px rgb(112, 90,  
91) }
```

Background

The CSS property to change the background color of an element to XYZ 12.2266, 11.5124, 11.4752 is called "background". The background property can be set on classes, ids or directly on the HTML element.

```
.background, #background, body{  
background: rgb(112, 90, 91) }
```

If only the background color should be changed can be used:

```
.background{ background-color: rgb(112, 90,  
91) }
```

This example shows the color as background, it is applied via the CSS property "background".

To optimize and compress your CSS code, you can use our [online CSS compressor and optimizer](#) based on csstidy. If you want to create a linear or radial gradient as background or border, check our [CSS Gradient Generator](#).

Hey! You found this booklet interesting? Support Converting Colors with the new Membership Option!

The pro membership hides all ads, plus gives you double the colors in the color bucket, and more awesome pro features!

[Learn more, Memberships starting at \\$2.50/m!](#)

**Follow me
on Twitter!**

@ConvertingColor