

Converting Colors

XYZ(12.3572, 10.9295, 10.2597)

Have a look what the booklet for
XYZ(12.3572, 10.9295, 10.2597)
contains.

XYZ(12.3213, 10.8641, 10.2517)	3
<i>Conversions</i>	4
<i>Details</i>	6
<i>Harmonies</i>	12
<i>Previews</i>	24
<i>Color Blindness Simulation</i>	28
<i>CSS Examples</i>	31

Color

**XYZ(12.3213, 10.8641,
10.2517)**

Conversions

Conversions Part 1

Format	Color
Hex	765456
RGB	118, 84, 86
RGB Percent	46%, 33%, 34%
CMY	0.5373, 0.6706, 0.6627
CMYK	0.00, 0.29, 0.27, 0.54
HSL	356°, 17%, 40%
HSV	356°, 29%, 46%
XYZ	12.3213, 10.8641, 10.2517
YIQ	94.3940, 19.6220, 7.8300

Conversions

Conversions Part 2

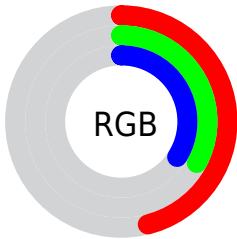
Format	Color
R_{YB}	118, 84, 86
Decimal	7754838
CIE _{Lab}	39.35, 14.47, 4.45
CIE _{LCh}	39, 15.139, 17.078
Yxy	10.8641, 0.3685, 0.3249
Android (android.graphics.Color)	4285944918 (0xFF765456)
YUV	94.3940, -4.1382, 20.7025
Hunter-Lab	32.9607, 9.0451, 4.6317

Details

The XYZ color **12.3213, 10.8641, 10.2517** is a dark color, and the websafe version is hex **996666**. A complement of this color would be **13.2875, 16.1030, 18.9317**, and the grayscale version is **10.7392, 11.2985, 12.3040**.

A 20% lighter version of the original color is **29.7636, 27.4857, 27.0291**, and **3.5800, 2.8763, 2.4643** is the 20% darker color. If you saturate the color by 10%, you get **11.0682, 9.0192, 7.7951**, and if you desaturate by 10%, it is **13.7989, 13.0465, 13.1265**.

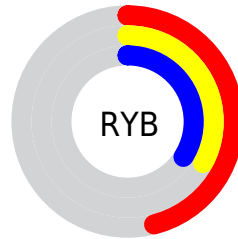
Distribution



Red (46%)

Green (33%)

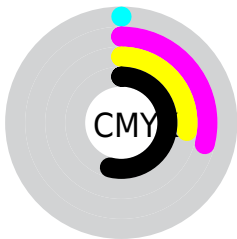
Blue (34%)



Red (46%)

Yellow (33%)

Blue (34%)

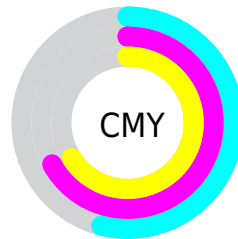


Cyan (0%)

Magenta (29%)

Yellow (27%)

Black (54%)



Cyan (54%)

Magenta (67%)

Yellow (66%)

Brightness & Saturation Gradients

These gradients show how the XYZ color 12.3213, 10.8641, 10.2517 changes by changing the brightness by 10 percent. The first figure shows a shift by +10% for each color and the second figure -10%.

Similar to the brightness gradients but the following saturation gradients show a change of the XYZ color 12.3213, 10.8641, 10.2517 by changing the saturation by 10% instead.

■ 12.3213, 10.8641,
10.2517

■ 12.3213, 10.8641,
10.2517

200.2477,
196.7328, 203.0088

■ 7.0366, 5.9755,
5.4584

■ 29.6908, 27.4086,
26.8830

■ 3.5316, 2.8302,
2.4552

■ 42.5063, 39.8333,
39.5581

■ 1.4407, 1.0437,
0.8163

■ 58.5628, 55.5388,
55.6976

■ 0.2849, 0.0000,
0.0000

■ 78.2256, 74.9096,
75.7199

■ 0.0000, 0.0000,
0.0000

■ 101.8602, 98.3300,
100.0437

129.8318,

126.1844, 129.0874

162.5059,
158.8572, 163.2696

■ 12.3213, 10.8641,
10.2517

■ 12.3213, 10.8641,
10.2517

■ 11.0682, 9.0192,
7.7951

■ 13.7989, 13.0465,
13.1265

■ 10.0277, 7.4934,
5.7367

■ 15.5103, 15.5805,
16.4370

■ 9.1883, 6.2693,
4.0556

■ 17.4653, 18.4811,
20.2006

■ 8.5371, 5.3266,
2.7289

■ 19.6729, 21.7621,
24.4335

■ 8.0593, 4.6431,
1.7313

■ 22.1418, 25.4365,
29.1509

■ 7.7385, 4.1929,
1.0338

■ 24.8801, 29.5169,
34.3677

■ 7.5317, 3.9001,
0.5929

■ 27.8955, 34.0152,
40.0978

■ 7.5093, 3.8668,
0.5497

■ 31.1956, 38.9426,
46.3549

■ 34.7876, 44.3102,
53.1518

Harmonies

Analogous

The Analogous color harmony consists of three colors that are next to each other on the color wheel.



12.3629, 10.8641, 13.1332



12.3213, 10.8641, 10.2517



11.7233, 10.8641, 8.1670

Triad

The Triadic color harmony groups three colors that are evenly spaced from another and form a triangle on the color wheel.



12.3213, 10.8641, 10.2517



8.9524, 10.8641, 8.3946



9.8926, 10.8641, 18.2083

Complementary

The Complementary color scheme is a pair of colors which are on the opposite of each other on the color wheel.



12.3213, 10.8641, 10.2517



13.2875, 16.1030, 18.9317

Split Complementary

Split-complementary colors differ from the complementary color scheme. The scheme consists of three colors, the original color and two neighbors of the complement color.



9.0444, 10.8641, 16.4491



12.3213, 10.8641, 10.2517



8.5261, 10.8641, 10.6144

Square

The Square scheme is like the rectangle color scheme, but the four colors are evenly spaced on the color wheel.



12.3213, 10.8641, 10.2517



9.7594, 10.8641, 7.2226



8.5587, 10.8641, 13.5607



10.9141, 10.8641, 18.0678

Rectangle

The Rectangle color scheme consists of four colors that form a rectangle on the color wheel.



12.3213, 10.8641, 10.2517



11.1107, 10.8641, 7.3648



8.5587, 10.8641, 13.5607



9.5792, 10.8641, 17.8087

Sweetspot

The Sweet Spot groups the original color and five complimentary colors.



12.3216, 10.8646, 10.2519



27.1393, 27.1988, 28.6456



13.6078, 11.3439, 18.6121



6.1538, 6.1261, 6.4201



57.3938, 60.3827, 65.7568



6.9614, 7.3239, 7.9757

Same Dimension

The Same Dimension uses a secret algorithm to generate beautiful new colors.



12.3216, 10.8646, 10.2519



20.0694, 16.7527, 14.9019



13.5084, 13.3653, 10.2559



3.6919, 3.7040, 3.9042



8.1222, 4.1826, 0.5858



39.4725, 20.3391, 2.2856

Inverse Universe

The Inverse Universe completely reimagines the original color for something new.



12.3216, 10.8646, 10.2519



20.0694, 16.7527, 14.9019



11.8035, 12.9469, 19.0166



3.6919, 3.7040, 3.9042



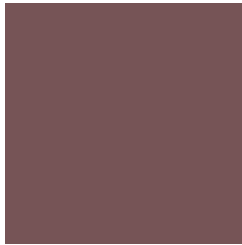
8.1222, 4.1826, 0.5858



39.4725, 20.3391, 2.2856

Previews

White Background



This preview shows how the XYZ color 12.3213, 10.8641, 10.2517 looks on a white background.

Color Contrast Check

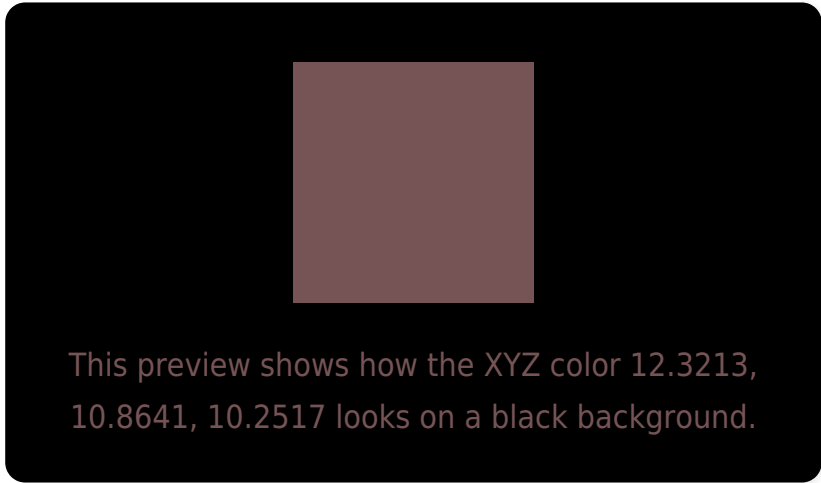
Large Text (above 18pt) WCAG AA ✓ Pass

Any Text WCAG AA ✓ Pass

Large Text (above 18pt) WCAG AAA ✓ Pass

Any Text WCAG AAA × Fail

Black Background



Color Contrast Check

Large Text (above 18pt) WCAG AA ✓ Pass

Any Text WCAG AA × Fail

Large Text (above 18pt) WCAG AAA × Fail

Any Text WCAG AAA × Fail

If you want to check with other color combinations, try the [Color Contrast Checker](#).

XYZ 12.3213, 10.8641, 10.2517

Background



This preview shows how black text looks on a background with the XYZ color 12.3213, 10.8641, 10.2517.



This preview shows how white text looks on a background with the XYZ color 12.3213, 10.8641,

Color Blindness Simulation

Color vision deficiency is a very complex topic, and I could not describe the different causes any better than Wikipedia does, so if you want to learn more, you should check out their [article about color blindness](#).

Dichromacy



Original Color

12.3213, 10.8641, 10.2517

Protanopia

10.5220, 11.0169, 11.4694

Deuteranopia

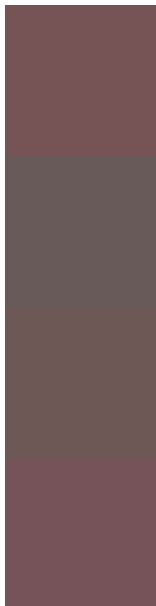
11.1216, 10.9715, 10.1259



Tritanopia

12.4099, 10.7763, 11.0988

Trichromacy



Original Color

12.3213, 10.8641, 10.2517

Protanomaly

11.0529, 10.9172, 10.9759

Deuteranomaly

11.5598, 10.9503, 10.0987

Tritanomaly

12.3676, 10.7593, 10.8761

Monochromacy



Original Color

12.3213, 10.8641, 10.2517

Achromatopsia

10.6392, 11.1932, 12.1894

Achromatomaly

11.1380, 10.9512, 11.4243

CSS Examples

Text

The CSS property to change the color of the text to XYZ 12.3213, 10.8641, 10.2517 is called "color". The color property can be set on classes, ids or directly on the HTML element.

This example shows how text in the color `rgb(118, 84, 86)` looks like.

```
.text, #text, p{  
    color:rgb(118, 84, 86)  
}
```

If you want to add a text shadow in that color use the text-shadow property, you can generate a text shadow directly with our [CSS Text Shadow Generator](#).

Here you see how black text with a 4 pixel rgb(118, 84, 86) colored shadow looks like.

```
.shadow{ text-shadow: 4px 4px 2px rgb(118, 84, 86) }
```

Border

The CSS property to change the border of an element to XYZ 12.3213, 10.8641, 10.2517 is called "border". The border property can be set on classes, ids or directly on the HTML element.

This example shows the color as border, it can be applied via the CSS property "border" or "border-color".

```
.border, #border, table{ border:4px solid rgb(118, 84, 86) }
```


If only the border color should be changed use the property `border-color`.

```
.border{ border-color:rgb(118, 84, 86) }
```

If you want to add a box shadow in that color use:

Here you see how a box with a 4 pixel `rgb(118, 84, 86)` colored shadow looks like.

```
.boxshadow{ -moz-box-shadow:4px 4px 4px  
4px rgb(118, 84, 86); -webkit-box-  
shadow:4px 4px 4px 4px rgb(118, 84, 86);  
box-shadow:4px 4px 4px 4px rgb(118, 84,  
86) }
```

Background

The CSS property to change the background color of an element to XYZ 12.3213, 10.8641, 10.2517 is called "background". The background property can be set on classes, ids or directly on the HTML element.

```
.background, #background, body{  
background: rgb(118, 84, 86) }
```

If only the background color should be changed can be used:

```
.background{ background-color: rgb(118, 84,  
86) }
```

This example shows the color as background, it is applied via the CSS property "background".

To optimize and compress your CSS code, you can use our [online CSS compressor and optimizer](#) based on csstidy. If you want to create a linear or radial gradient as background or border, check our [CSS Gradient Generator](#).

Hey! You found this booklet interesting? Support Converting Colors with the new Membership Option!

The pro membership hides all ads, plus gives you double the colors in the color bucket, and more awesome pro features!

[Learn more, Memberships starting at \\$2.50/m!](#)

**Follow me
on Twitter!**

@ConvertingColor