

Converting Colors

XYZ(12.5358, 11.5006, 11.3814)

Have a look what the booklet for
XYZ(12.5358, 11.5006, 11.3814)
contains.

XYZ(12.5309, 11.5449, 11.4655)	3
<i>Conversions</i>	4
<i>Details</i>	6
<i>Harmonies</i>	12
<i>Previews</i>	24
<i>Color Blindness Simulation</i>	28
<i>CSS Examples</i>	31

Color

**XYZ(12.5309, 11.5449,
11.4655)**

Conversions

Conversions Part 1

Format	Color
Hex	73595B
RGB	115, 89, 91
RGB Percent	45%, 35%, 36%
CMY	0.5490, 0.6510, 0.6431
CMYK	0.00, 0.23, 0.21, 0.55
HSL	355°, 13%, 40%
HSV	355°, 23%, 45%
XYZ	12.5309, 11.5449, 11.4655
YIQ	97.0020, 14.8540, 6.1340

Conversions

Conversions Part 2

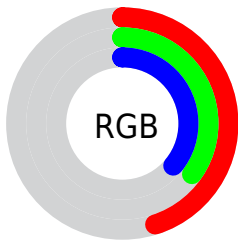
Format	Color
R _Y B	115, 89, 91
Decimal	7559515
CIE Lab	40.48, 11.02, 2.94
CIE LCh	40, 11.401, 14.950
Yxy	11.5449, 0.3526, 0.3248
Android (android.graphics.Color)	4285749595 (0xFF73595B)
YUV	97.0020, -2.9590, 15.7842
Hunter-Lab	33.9778, 6.3691, 3.7776

Details

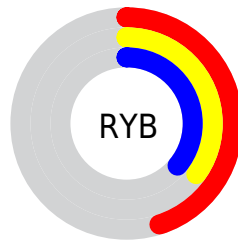
The XYZ color **12.5309, 11.5449, 11.4655** is a dark color, and the websafe version is hex **666666**. A complement of this color would be **13.2316, 15.5778, 17.9328**, and the grayscale version is **11.3675, 11.9595, 13.0239**.

A 20% lighter version of the original color is **29.9767, 28.6038, 29.1404**, and **3.5843, 3.0755, 2.8873** is the 20% darker color. If you saturate the color by 10%, you get **11.2217, 9.6081, 8.9272**, and if you desaturate by 10%, it is **14.0551, 13.8077, 14.3954**.

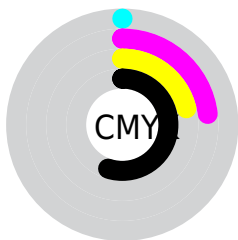
Distribution



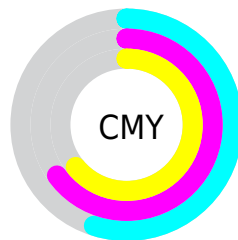
- Red (45%)
- Green (35%)
- Blue (36%)



- Red (45%)
- Yellow (35%)
- Blue (36%)



- Cyan (0%)
- Magenta (23%)
- Yellow (21%)
- Black (55%)



- Cyan (55%)
- Magenta (65%)
- Yellow (64%)

Brightness & Saturation Gradients

These gradients show how the XYZ color 12.5309, 11.5449, 11.4655 changes by changing the brightness by 10 percent. The first figure shows a shift by +10% for each color and the second figure -10%.

Similar to the brightness gradients but the following saturation gradients show a change of the XYZ color 12.5309, 11.5449, 11.4655 by changing the saturation by 10% instead.

■ 12.5309, 11.5449,
11.4655

■ 12.5309, 11.5449,
11.4655

201.5879,
201.3687, 211.6847

■ 7.1811, 6.4346,
6.2628

■ 30.0670, 28.6635,
29.1675

■ 3.6229, 3.1111,
2.9341

■ 42.9839, 41.4405,
42.5038

■ 1.4911, 1.1900,
1.0611

■ 59.1539, 57.5420,
59.3885

■ 0.3198, 0.0535,
0.0000

■ 78.9424, 77.3522,
80.2399

■ 0.0000, 0.0000,
0.0000

■ 102.7147,
101.2556, 105.4767

130.8362,

129.6365, 135.5174

163.6721,
162.8794, 170.7805

■ 12.5309, 11.5449,
11.4655

■ 12.5309, 11.5449,
11.4655

■ 11.2217, 9.6081,
8.9272

■ 14.0551, 13.8077,
14.3954

■ 10.1168, 7.9809,
6.7633

■ 15.8024, 16.4089,
17.7318

■ 9.2063, 6.6476,
4.9563

■ 17.7815, 19.3622,
21.4896

■ 8.4788, 5.5907,
3.4869

■ 20.0005, 22.6800,
25.6829

■ 7.9220, 4.7907,
2.3341

■ 22.4671, 26.3741,
30.3250

■ 7.5218, 4.2258,
1.4746

■ 25.1887, 30.4560,
35.4286

■ 7.2613, 3.8689,
0.8816

■ 28.1721, 34.9363,
41.0061

■ 7.1187, 3.6642,
0.5859

■ 31.4243, 39.8256,
47.0692

■ 34.9517, 45.1338,
53.6293

Harmonies

Analogous

The Analogous color harmony consists of three colors that are next to each other on the color wheel.



12.5301, 11.5449, 13.7520



12.5309, 11.5449, 11.4655



12.1007, 11.5449, 9.7021

Triad

The Triadic color harmony groups three colors that are evenly spaced from another and form a triangle on the color wheel.



12.5309, 11.5449, 11.4655



9.9196, 11.5449, 9.6976



10.5776, 11.5449, 17.3342

Complementary

The Complementary color scheme is a pair of colors which are on the opposite of each other on the color wheel.



12.5309, 11.5449, 11.4655



13.2316, 15.5778, 17.9328

Split Complementary

Split-complementary colors differ from the complementary color scheme. The scheme consists of three colors, the original color and two neighbors of the complement color.



9.9178, 11.5449, 15.9547



12.5309, 11.5449, 11.4655



9.5507, 11.5449, 11.4585

Square

The Square scheme is like the rectangle color scheme, but the four colors are evenly spaced on the color wheel.



12.5309, 11.5449, 11.4655



10.5802, 11.5449, 8.7692



9.5500, 11.5449, 13.7442



11.3756, 11.5449, 17.3367

Rectangle

The Rectangle color scheme consists of four colors that form a rectangle on the color wheel.



12.5309, 11.5449, 11.4655



11.6388, 11.5449, 8.9799



9.5500, 11.5449, 13.7442



10.3332, 11.5449, 17.0094

Sweetspot

The Sweet Spot groups the original color and five complimentary colors.



12.5312, 11.5454, 11.4657



26.8143, 27.1742, 28.9251



13.4558, 11.8827, 17.8041



6.3669, 6.4381, 6.8432



57.3938, 60.3827, 65.7568



6.9614, 7.3239, 7.9757

Same Dimension

The Same Dimension uses a secret algorithm to generate beautiful new colors.



12.5312, 11.5454, 11.4657



21.1959, 18.8328, 18.1261



13.4149, 13.4489, 11.3407



3.6943, 3.7050, 3.9171



8.1343, 4.1875, 0.6497



39.5078, 20.3532, 2.4716

Inverse Universe

The Inverse Universe completely reimagines the original color for something new.



12.5312, 11.5454, 11.4657



21.1959, 18.8328, 18.1261



12.1818, 13.2963, 18.1440



3.6943, 3.7050, 3.9171



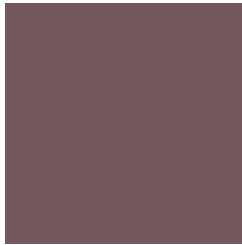
8.1343, 4.1875, 0.6497



39.5078, 20.3532, 2.4716

Previews

White Background



This preview shows how the XYZ color 12.5309, 11.5449, 11.4655 looks on a white background.

Color Contrast Check

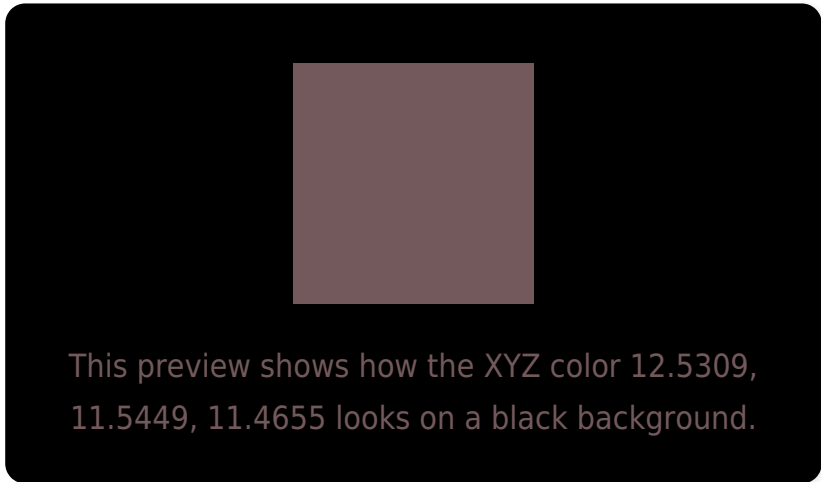
Large Text (above 18pt) WCAG AA ✓ Pass

Any Text WCAG AA ✓ Pass

Large Text (above 18pt) WCAG AAA ✓ Pass

Any Text WCAG AAA × Fail

Black Background



Color Contrast Check

Large Text (above 18pt) WCAG AA ✓ Pass

Any Text WCAG AA × Fail

Large Text (above 18pt) WCAG AAA × Fail

Any Text WCAG AAA × Fail

If you want to check with other color combinations, try the [Color Contrast Checker](#).

XYZ 12.5309, 11.5449, 11.4655

Background



This preview shows how black text looks on a background with the XYZ color 12.5309, 11.5449, 11.4655.



This preview shows how white text looks on a background with the XYZ color 12.5309, 11.5449,

Color Blindness Simulation

Color vision deficiency is a very complex topic, and I could not describe the different causes any better than Wikipedia does, so if you want to learn more, you should check out their [article about color blindness](#).

Dichromacy



Original Color

12.5309, 11.5449, 11.4655

Protanopia

11.1496, 11.5892, 12.2390

Deuteranopia

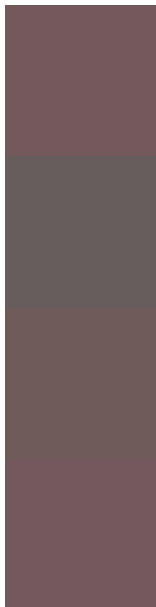
11.7360, 11.5183, 11.2776



Tritanopia

12.6255, 11.4505, 12.3712

Trichromacy



Original Color

12.5309, 11.5449, 11.4655

Protanomaly

11.5991, 11.5621, 11.9763

Deuteranomaly

12.0170, 11.5354, 11.2660

Tritanomaly

12.5803, 11.4324, 12.1333

Monochromacy



Original Color

12.5309, 11.5449, 11.4655

Achromatopsia

11.3621, 11.9538, 13.0177

Achromatomaly

11.7772, 11.7747, 12.4785

CSS Examples

Text

The CSS property to change the color of the text to XYZ 12.5309, 11.5449, 11.4655 is called "color". The color property can be set on classes, ids or directly on the HTML element.

This example shows how text in the color `rgb(115, 89, 91)` looks like.

```
.text, #text, p{  
    color:rgb(115, 89, 91)  
}
```

If you want to add a text shadow in that color use the text-shadow property, you can generate a text shadow directly with our [CSS Text Shadow Generator](#).

Here you see how black text with a 4 pixel rgb(115, 89, 91) colored shadow looks like.

```
.shadow{ text-shadow: 4px 4px 2px rgb(115, 89, 91) }
```

Border

The CSS property to change the border of an element to XYZ 12.5309, 11.5449, 11.4655 is called "border". The border property can be set on classes, ids or directly on the HTML element.

This example shows the color as border, it can be applied via the CSS property "border" or "border-color".

```
.border, #border, table{ border:4px solid rgb(115, 89, 91) }
```


If only the border color should be changed use the property `border-color`.

```
.border{ border-color:rgb(115, 89, 91) }
```

If you want to add a box shadow in that color use:

Here you see how a box with a 4 pixel `rgb(115, 89, 91)` colored shadow looks like.

```
.boxshadow{ -moz-box-shadow:4px 4px 4px  
4px rgb(115, 89, 91); -webkit-box-  
shadow:4px 4px 4px 4px rgb(115, 89, 91);  
box-shadow:4px 4px 4px 4px rgb(115, 89,  
91) }
```

Background

The CSS property to change the background color of an element to XYZ 12.5309, 11.5449, 11.4655 is called "background". The background property can be set on classes, ids or directly on the HTML element.

```
.background, #background, body{  
background: rgb(115, 89, 91) }
```

If only the background color should be changed can be used:

```
.background{ background-color: rgb(115, 89,  
91) }
```

This example shows the color as background, it is applied via the CSS property "background".

To optimize and compress your CSS code, you can use our [online CSS compressor and optimizer](#) based on csstidy. If you want to create a linear or radial gradient as background or border, check our [CSS Gradient Generator](#).

Hey! You found this booklet interesting? Support Converting Colors with the new Membership Option!

The pro membership hides all ads, plus gives you double the colors in the color bucket, and more awesome pro features!

[Learn more, Memberships starting at \\$2.50/m!](#)

**Follow me
on Twitter!**

@ConvertingColor