

Converting Colors

XYZ(12.6203, 10.9567, 10.2059)

Have a look what the booklet for
XYZ(12.6203, 10.9567, 10.2059)
contains.

XYZ(12.6581, 10.9233, 10.2454)	3
<i>Conversions</i>	4
<i>Details</i>	6
<i>Harmonies</i>	12
<i>Previews</i>	24
<i>Color Blindness Simulation</i>	28
<i>CSS Examples</i>	31

Color

**XYZ(12.6581, 10.9233,
10.2454)**

Conversions

Conversions Part 1

Format	Color
Hex	795356
RGB	121, 83, 86
RGB Percent	47%, 33%, 34%
CMY	0.5255, 0.6745, 0.6627
CMYK	0.00, 0.31, 0.29, 0.53
HSL	355°, 19%, 40%
HSV	355°, 31%, 47%
XYZ	12.6581, 10.9233, 10.2454
YIQ	94.7040, 21.6850, 8.9890

Conversions

Conversions Part 2

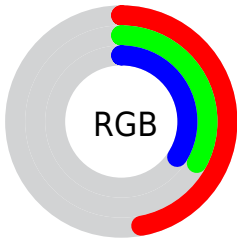
Format	Color
R _Y B	121, 83, 86
Decimal	7951190
CIE Lab	39.45, 16.32, 4.64
CIE LCh	39, 16.970, 15.860
Yxy	10.9233, 0.3742, 0.3229
Android (android.graphics.Color)	4286141270 (0xFF795356)
YUV	94.7040, -4.2911, 23.0616
Hunter-Lab	33.0504, 10.5261, 4.7558

Details

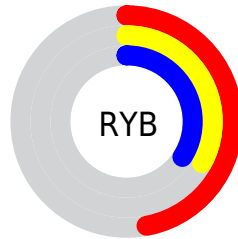
The XYZ color **12.6581, 10.9233, 10.2454** is a dark color, and the websafe version is hex **996666**. A complement of this color would be **13.6751, 16.8219, 19.6664**, and the grayscale version is **10.8130, 11.3761, 12.3886**.

A 20% lighter version of the original color is **30.2870, 27.5513, 27.0142**, and **3.6603, 2.8228, 2.4498** is the 20% darker color. If you saturate the color by 10%, you get **11.3973, 9.0651, 7.7798**, and if you desaturate by 10%, it is **14.1511, 13.1337, 13.1343**.

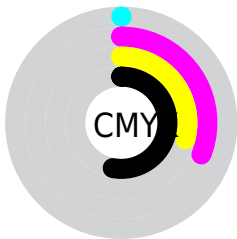
Distribution



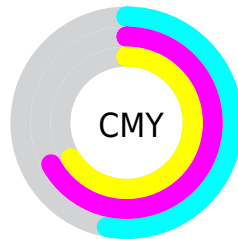
- Red (47%)
- Green (33%)
- Blue (34%)



- Red (47%)
- Yellow (33%)
- Blue (34%)



- Cyan (0%)
- Magenta (31%)
- Yellow (29%)
- Black (53%)



- Cyan (53%)
- Magenta (67%)
- Yellow (66%)

Brightness & Saturation Gradients

These gradients show how the XYZ color 12.6581, 10.9233, 10.2454 changes by changing the brightness by 10 percent. The first figure shows a shift by +10% for each color and the second figure -10%.

Similar to the brightness gradients but the following saturation gradients show a change of the XYZ color 12.6581, 10.9233, 10.2454 by changing the saturation by 10% instead.

■ 12.6581, 10.9233,
10.2454

■ 12.6581, 10.9233,
10.2454

202.3969,
197.1406, 202.9627

■ 7.2689, 6.0153,
5.4542

■ 30.2947, 27.5182,
26.8711

■ 3.6787, 2.8544,
2.4528

■ 43.2729, 39.9740,
39.5426

■ 1.5220, 1.0562,
0.8150

■ 59.5114, 55.7144,
55.6781

■ 0.3407, 0.0000,
0.0000

■ 79.3756, 75.1239,
75.6960

■ 0.0000, 0.0000,
0.0000

■ 103.2310, 98.5868,
100.0149

131.4427,

126.4877, 129.0533

164.3762,
159.2108, 163.2297

■ 12.6581, 10.9233,
10.2454

■ 12.6581, 10.9233,
10.2454

■ 11.3973, 9.0651,
7.7798

■ 14.1511, 13.1337,
13.1343

■ 10.3562, 7.5395,
5.7168

■ 15.8864, 15.7116,
16.4642

■ 9.5225, 6.3274,
4.0353

■ 17.8742, 18.6733,
20.2529

■ 8.8822, 5.4068,
2.7119

■ 20.1242, 22.0334,
24.5168

■ 8.4196, 4.7533,
1.7205

■ 22.6454, 25.8061,
29.2716

■ 8.1167, 4.3383,
1.0315

■ 25.4464, 30.0046,
34.5323

■ 7.9375, 4.0859,
0.6444

■ 28.5355, 34.6417,
40.3131

■ 31.9206, 39.7296,
46.6279

■ 35.6093, 45.2800,
53.4898

Harmonies

Analogous

The Analogous color harmony consists of three colors that are next to each other on the color wheel.



12.6777, 10.9233, 13.5089



12.6581, 10.9233, 10.2454



11.9997, 10.9233, 7.9029

Triad

The Triadic color harmony groups three colors that are evenly spaced from another and form a triangle on the color wheel.



12.6581, 10.9233, 10.2454



8.8748, 10.9233, 8.0057



9.8513, 10.9233, 19.1528

Complementary

The Complementary color scheme is a pair of colors which are on the opposite of each other on the color wheel.



12.6581, 10.9233, 10.2454



13.6751, 16.8219, 19.6664

Split Complementary

Split-complementary colors differ from the complementary color scheme. The scheme consists of three colors, the original color and two neighbors of the complement color.



8.9171, 10.9233, 17.0422



12.6581, 10.9233, 10.2454



8.3821, 10.9233, 10.4125

Square

The Square scheme is like the rectangle color scheme, but the four colors are evenly spaced on the color wheel.



12.6581, 10.9233, 10.2454



9.7896, 10.9233, 6.7824



8.3970, 10.9233, 13.7098



10.9984, 10.9233, 19.0853

Rectangle

The Rectangle color scheme consists of four colors that form a rectangle on the color wheel.



12.6581, 10.9233, 10.2454



11.3132, 10.9233, 6.9997



8.3970, 10.9233, 13.7098



9.5039, 10.9233, 18.6598

Sweetspot

The Sweet Spot groups the original color and five complimentary colors.



12.6584, 10.9238, 10.2456



29.1843, 29.2308, 30.8894



13.9933, 11.4074, 19.5535



6.5796, 6.5447, 6.8845



59.0181, 62.0916, 67.6177



7.4413, 7.8288, 8.5256

Same Dimension

The Same Dimension uses a secret algorithm to generate beautiful new colors.



12.6584, 10.9238, 10.2456



20.9262, 16.9932, 14.9465



13.8928, 13.5820, 10.0736



4.0100, 4.0197, 4.2501



8.5042, 4.3778, 0.6799



40.4336, 20.8298, 2.5475

Inverse Universe

The Inverse Universe completely reimagines the original color for something new.



12.6584, 10.9238, 10.2456



20.9262, 16.9932, 14.9465



12.0874, 13.3570, 20.0303



4.0100, 4.0197, 4.2501



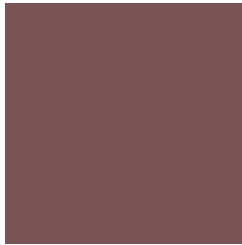
8.5042, 4.3778, 0.6799



40.4336, 20.8298, 2.5475

Previews

White Background



This preview shows how the XYZ color 12.6581, 10.9233, 10.2454 looks on a white background.

Color Contrast Check

Large Text (above 18pt) WCAG AA ✓ Pass

Any Text WCAG AA ✓ Pass

Large Text (above 18pt) WCAG AAA ✓ Pass

Any Text WCAG AAA × Fail

Black Background



This preview shows how the XYZ color 12.6581, 10.9233, 10.2454 looks on a black background.

Color Contrast Check

Large Text (above 18pt) WCAG AA ✓ Pass

Any Text WCAG AA × Fail

Large Text (above 18pt) WCAG AAA × Fail

Any Text WCAG AAA × Fail

If you want to check with other color combinations, try the [Color Contrast Checker](#).

XYZ 12.6581, 10.9233, 10.2454

Background



This preview shows how black text looks on a background with the XYZ color 12.6581, 10.9233, 10.2454.



This preview shows how white text looks on a background with the XYZ color 12.6581, 10.9233,

Color Blindness Simulation

Color vision deficiency is a very complex topic, and I could not describe the different causes any better than Wikipedia does, so if you want to learn more, you should check out their [article about color blindness](#).

Dichromacy



Original Color

12.6581, 10.9233, 10.2454

Protanopia

10.5220, 11.0169, 11.4694

Deuteranopia

11.1216, 10.9715, 10.1259



Tritanopia

12.7816, 10.9727, 10.8955

Trichromacy



Original Color

12.6581, 10.9233, 10.2454

Protanomaly

11.0845, 10.8091, 10.9533

Deuteranomaly

11.6034, 10.8518, 10.0774

Tritanomaly

12.7399, 10.9560, 10.6758

Monochromacy



Original Color

12.6581, 10.9233, 10.2454

Achromatopsia

10.8771, 11.4435, 12.4620

Achromatomaly

11.3818, 11.1979, 11.6867

CSS Examples

Text

The CSS property to change the color of the text to XYZ 12.6581, 10.9233, 10.2454 is called "color". The color property can be set on classes, ids or directly on the HTML element.

This example shows how text in the color `rgb(121, 83, 86)` looks like.

```
.text, #text, p{  
    color:rgb(121, 83, 86)  
}
```

If you want to add a text shadow in that color use the text-shadow property, you can generate a text shadow directly with our [CSS Text Shadow Generator](#).

Here you see how black text with a 4 pixel rgb(121, 83, 86) colored shadow looks like.

```
.shadow{ text-shadow: 4px 4px 2px rgb(121, 83, 86) }
```

Border

The CSS property to change the border of an element to XYZ 12.6581, 10.9233, 10.2454 is called "border". The border property can be set on classes, ids or directly on the HTML element.

This example shows the color as border, it can be applied via the CSS property "border" or "border-color".

```
.border, #border, table{ border:4px solid rgb(121, 83, 86) }
```


If only the border color should be changed use the property border-color.

```
.border{ border-color:rgb(121, 83, 86) }
```

If you want to add a box shadow in that color use:

Here you see how a box with a 4 pixel rgb(121, 83, 86) colored shadow looks like.

```
.boxshadow{ -moz-box-shadow:4px 4px 4px  
4px rgb(121, 83, 86); -webkit-box-  
shadow:4px 4px 4px 4px rgb(121, 83, 86);  
box-shadow:4px 4px 4px 4px rgb(121, 83,  
86) }
```

Background

The CSS property to change the background color of an element to XYZ 12.6581, 10.9233, 10.2454 is called "background". The background property can be set on classes, ids or directly on the HTML element.

```
.background, #background, body{  
background: rgb(121, 83, 86) }
```

If only the background color should be changed can be used:

```
.background{ background-color: rgb(121, 83,  
86) }
```

This example shows the color as background, it is applied via the CSS property "background".

To optimize and compress your CSS code, you can use our [online CSS compressor and optimizer](#) based on csstidy. If you want to create a linear or radial gradient as background or border, check our [CSS Gradient Generator](#).

Hey! You found this booklet interesting? Support Converting Colors with the new Membership Option!

The pro membership hides all ads, plus gives you double the colors in the color bucket, and more awesome pro features!

[Learn more, Memberships starting at \\$2.50/m!](#)

**Follow me
on Twitter!**

@ConvertingColor