

Converting Colors

XYZ(12.6722, 10.9442, 10.3698)

Have a look what the booklet for
XYZ(12.6722, 10.9442, 10.3698)
contains.

XYZ(12.6987, 10.9396, 10.4591)	3
<i>Conversions</i>	4
<i>Details</i>	6
<i>Harmonies</i>	12
<i>Previews</i>	24
<i>Color Blindness Simulation</i>	28
<i>CSS Examples</i>	31

Color

**XYZ(12.6987, 10.9396,
10.4591)**

Conversions

Conversions Part 1

Format	Color
Hex	795357
RGB	121, 83, 87
RGB Percent	47%, 33%, 34%
CMY	0.5255, 0.6745, 0.6588
CMYK	0.00, 0.31, 0.28, 0.53
HSL	354°, 19%, 40%
HSV	354°, 31%, 47%
XYZ	12.6987, 10.9396, 10.4591
YIQ	94.8180, 21.3640, 9.3000

Conversions

Conversions Part 2

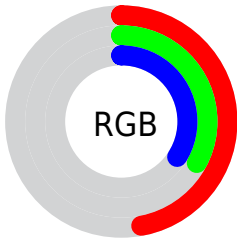
Format	Color
RYB	121, 83, 87
Decimal	7951191
CIELab	39.48, 16.48, 4.06
CIElCh	39, 16.970, 13.832
Yxy	10.9396, 0.3724, 0.3208
Android (android.graphics.Color)	4286141271 (0xFF795357)
YUV	94.8180, -3.8543, 22.9616
Hunter-Lab	33.0751, 10.6512, 4.4037

Details

The XYZ color **12.6987, 10.9396, 10.4591** is a dark color, and the websafe version is hex **996666**. A complement of this color would be **13.6160, 16.7983, 19.3552**, and the grayscale version is **10.8393, 11.4038, 12.4187**.

A 20% lighter version of the original color is **30.3584, 27.5799, 27.3903**, and **3.6780, 2.8299, 2.5429** is the 20% darker color. If you saturate the color by 10%, you get **11.4428, 9.0834, 8.0193**, and if you desaturate by 10%, it is **14.1832, 13.1466, 13.3027**.

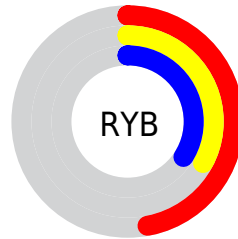
Distribution



Red (47%)

Green (33%)

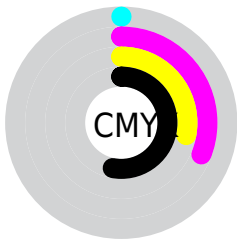
Blue (34%)



Red (47%)

Yellow (33%)

Blue (34%)

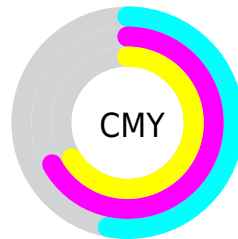


Cyan (0%)

Magenta (31%)

Yellow (28%)

Black (53%)



Cyan (53%)

Magenta (67%)

Yellow (66%)

Brightness & Saturation Gradients

These gradients show how the XYZ color 12.6987, 10.9396, 10.4591 changes by changing the brightness by 10 percent. The first figure shows a shift by +10% for each color and the second figure -10%.

Similar to the brightness gradients but the following saturation gradients show a change of the XYZ color 12.6987, 10.9396, 10.4591 by changing the saturation by 10% instead.

■ 12.6987, 10.9396,
10.4591

■ 12.6987, 10.9396,
10.4591

202.6544,
197.2527, 204.5205

■ 7.2970, 6.0262,
5.5948

■ 30.3674, 27.5484,
27.2767

■ 3.6965, 2.8610,
2.5355

■ 43.3650, 40.0127,
40.0671

■ 1.5319, 1.0596,
0.8589

■ 59.6253, 55.7627,
56.3367

■ 0.3474, 0.0000,
0.0000

■ 79.5136, 75.1828,
76.5039

■ 0.0000, 0.0000,
0.0000

■ 103.3954, 98.6575,
100.9874

131.6358,

126.5711, 130.2056

164.6004,
159.3080, 164.5771

■ 12.6987, 10.9396,
10.4591

■ 12.6987, 10.9396,
10.4591

■ 11.4428, 9.0834,
8.0193

■ 14.1832, 13.1466,
13.3027

■ 10.4032, 7.5584,
5.9644

■ 15.9058, 15.7195,
16.5666

■ 9.5680, 6.3456,
4.2749

■ 17.8769, 18.6745,
20.2672

■ 8.9234, 5.4233,
2.9292

■ 20.1058, 22.0261,
24.4198

■ 8.4544, 4.7673,
1.9036

■ 22.6012, 25.7885,
29.0389

■ 8.1433, 4.3489,
1.1712

■ 25.3716, 29.9748,
34.1384

■ 7.9561, 4.0933,
0.7424

■ 28.4252, 34.5976,
39.7317

■ 31.7694, 39.6692,
45.8315

■ 35.4120, 45.2012,
52.4502

Harmonies

Analogous

The Analogous color harmony consists of three colors that are next to each other on the color wheel.



12.6720, 10.9396, 13.7653



12.6987, 10.9396, 10.4591



12.0778, 10.9396, 8.0382

Triad

The Triadic color harmony groups three colors that are evenly spaced from another and form a triangle on the color wheel.



12.6987, 10.9396, 10.4591



8.9388, 10.9396, 7.8984



9.7935, 10.9396, 19.0967

Complementary

The Complementary color scheme is a pair of colors which are on the opposite of each other on the color wheel.



12.6987, 10.9396, 10.4591



13.6160, 16.7983, 19.3552

Split Complementary

Split-complementary colors differ from the complementary color scheme. The scheme consists of three colors, the original color and two neighbors of the complement color.



8.8813, 10.9396, 16.8634



12.6987, 10.9396, 10.4591



8.4133, 10.9396, 10.2318

Square

The Square scheme is like the rectangle color scheme, but the four colors are evenly spaced on the color wheel.



12.6987, 10.9396, 10.4591



9.8775, 10.9396, 6.7551



8.3930, 10.9396, 13.4922



10.9360, 10.9396, 19.1885

Rectangle

The Rectangle color scheme consists of four colors that form a rectangle on the color wheel.



12.6987, 10.9396, 10.4591



11.4049, 10.9396, 7.0794



8.3930, 10.9396, 13.4922



9.4518, 10.9396, 18.5553

Sweetspot

The Sweet Spot groups the original color and five complimentary colors.



12.6990, 10.9401, 10.4593



29.2132, 29.2424, 31.0417



13.8228, 11.3195, 19.5455



6.5870, 6.5476, 6.9233



59.0181, 62.0916, 67.6177



7.4413, 7.8288, 8.5256

Same Dimension

The Same Dimension uses a secret algorithm to generate beautiful new colors.



12.6990, 10.9401, 10.4593



21.0061, 17.0252, 15.3671



13.7741, 13.3444, 10.0341



4.0139, 4.0213, 4.2707



8.5237, 4.3856, 0.7829



40.5008, 20.8567, 2.9014

Inverse Universe

The Inverse Universe completely reimagines the original color for something new.



12.6990, 10.9401, 10.4593



21.0061, 17.0252, 15.3671



12.2177, 13.6175, 20.0736



4.0139, 4.0213, 4.2707



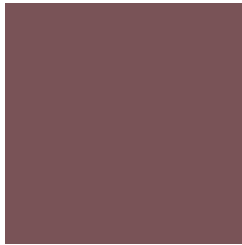
8.5237, 4.3856, 0.7829



40.5008, 20.8567, 2.9014

Previews

White Background



This preview shows how the XYZ color 12.6987, 10.9396, 10.4591 looks on a white background.

Color Contrast Check

Large Text (above 18pt) WCAG AA ✓ Pass

Any Text WCAG AA ✓ Pass

Large Text (above 18pt) WCAG AAA ✓ Pass

Any Text WCAG AAA × Fail

Black Background



This preview shows how the XYZ color 12.6987, 10.9396, 10.4591 looks on a black background.

Color Contrast Check

Large Text (above 18pt) WCAG AA ✓ Pass

Any Text WCAG AA × Fail

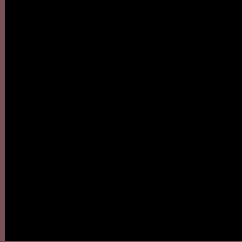
Large Text (above 18pt) WCAG AAA × Fail

Any Text WCAG AAA × Fail

If you want to check with other color combinations, try the [Color Contrast Checker](#).

XYZ 12.6987, 10.9396, 10.4591

Background



This preview shows how black text looks on a background with the XYZ color 12.6987, 10.9396, 10.4591.



This preview shows how white text looks on a background with the XYZ color 12.6987, 10.9396,

Color Blindness Simulation

Color vision deficiency is a very complex topic, and I could not describe the different causes any better than Wikipedia does, so if you want to learn more, you should check out their [article about color blindness](#).

Dichromacy



Original Color

12.6987, 10.9396, 10.4591

Protanopia

10.5654, 11.0343, 11.6982

Deuteranopia

11.1616, 10.9875, 10.3366



Tritanopia

12.7816, 10.9727, 10.8955

Trichromacy



Original Color

12.6987, 10.9396, 10.4591

Protanomaly

11.1268, 10.8260, 11.1760

Deuteranomaly

11.6435, 10.8678, 10.2881

Tritanomaly

12.7399, 10.9560, 10.6758

Monochromacy



Original Color

12.6987, 10.9396, 10.4591

Achromatopsia

10.8771, 11.4435, 12.4620

Achromatomaly

11.3818, 11.1979, 11.6867

CSS Examples

Text

The CSS property to change the color of the text to XYZ 12.6987, 10.9396, 10.4591 is called "color". The color property can be set on classes, ids or directly on the HTML element.

This example shows how text in the color `rgb(121, 83, 87)` looks like.

```
.text, #text, p{  
    color:rgb(121, 83, 87)  
}
```

If you want to add a text shadow in that color use the text-shadow property, you can generate a text shadow directly with our [CSS Text Shadow Generator](#).

Here you see how black text with a 4 pixel rgb(121, 83, 87) colored shadow looks like.

```
.shadow{ text-shadow: 4px 4px 2px rgb(121, 83, 87) }
```

Border

The CSS property to change the border of an element to XYZ 12.6987, 10.9396, 10.4591 is called "border". The border property can be set on classes, ids or directly on the HTML element.

This example shows the color as border, it can be applied via the CSS property "border" or "border-color".

```
.border, #border, table{ border:4px solid rgb(121, 83, 87) }
```


If only the border color should be changed use the property `border-color`.

```
.border{ border-color:rgb(121, 83, 87) }
```

If you want to add a box shadow in that color use:

Here you see how a box with a 4 pixel `rgb(121, 83, 87)` colored shadow looks like.

```
.boxshadow{ -moz-box-shadow:4px 4px 4px  
4px rgb(121, 83, 87); -webkit-box-  
shadow:4px 4px 4px 4px rgb(121, 83, 87);  
box-shadow:4px 4px 4px 4px rgb(121, 83,  
87) }
```

Background

The CSS property to change the background color of an element to XYZ 12.6987, 10.9396, 10.4591 is called "background". The background property can be set on classes, ids or directly on the HTML element.

```
.background, #background, body{  
background: rgb(121, 83, 87) }
```

If only the background color should be changed can be used:

```
.background{ background-color: rgb(121, 83,  
87) }
```

This example shows the color as background, it is applied via the CSS property "background".

To optimize and compress your CSS code, you can use our [online CSS compressor and optimizer](#) based on csstidy. If you want to create a linear or radial gradient as background or border, check our [CSS Gradient Generator](#).

Hey! You found this booklet interesting? Support Converting Colors with the new Membership Option!

The pro membership hides all ads, plus gives you double the colors in the color bucket, and more awesome pro features!

[Learn more, Memberships starting at \\$2.50/m!](#)

**Follow me
on Twitter!**

@ConvertingColor