

Converting Colors

XYZ(12.8276, 11.6940, 7.5932)

Have a look what the booklet for
XYZ(12.8276, 11.6940, 7.5932)
contains.

XYZ(12.7954, 11.6453, 7.5346)	3
<i>Conversions</i>	4
<i>Details</i>	6
<i>Harmonies</i>	12
<i>Previews</i>	24
<i>Color Blindness Simulation</i>	28
<i>CSS Examples</i>	31

Color

**XYZ(12.7954, 11.6453,
7.5346)**

Conversions

Conversions Part 1

Format	Color
Hex	7B5847
RGB	123, 88, 71
RGB Percent	48%, 35%, 28%
CMY	0.5176, 0.6549, 0.7216
CMYK	0.00, 0.28, 0.42, 0.52
HSL	20°, 27%, 38%
HSV	20°, 42%, 48%
XYZ	12.7954, 11.6453, 7.5346
YIQ	96.5270, 26.3170, 2.1330

Conversions

Conversions Part 2

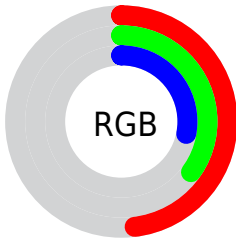
Format	Color
R_{YB}	123, 96, 71
Decimal	8083527
CIE _{Lab}	40.65, 12.09, 15.56
CIE _{LCh}	41, 19.702, 52.148
Yxy	11.6453, 0.4002, 0.3642
Android (android.graphics.Color)	4286273607 (0xFF7B5847)
YUV	96.5270, -12.5848, 23.2168
Hunter-Lab	34.1252, 7.2103, 10.7968

Details

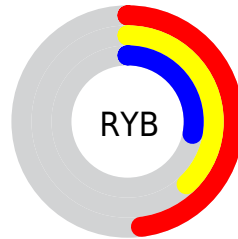
The XYZ color **12.7954, 11.6453, 7.5346** is a dark color, and the websafe version is hex **996666**. A complement of this color would be **11.3275, 13.0772, 20.6660**, and the grayscale version is **11.2719, 11.8590, 12.9144**.

A 20% lighter version of the original color is **30.6101, 28.8801, 21.7304**, and **3.6983, 3.1128, 1.4428** is the 20% darker color. If you saturate the color by 10%, you get **11.7986, 10.2208, 5.4480**, and if you desaturate by 10%, it is **13.9499, 13.2573, 10.0683**.

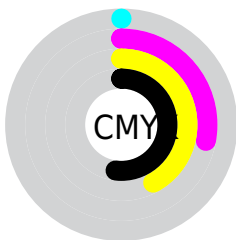
Distribution



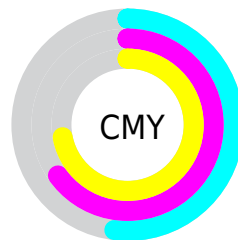
- Red (48%)
- Green (35%)
- Blue (28%)



- Red (48%)
- Yellow (38%)
- Blue (28%)



- Cyan (0%)
- Magenta (28%)
- Yellow (42%)
- Black (52%)



- Cyan (52%)
- Magenta (65%)
- Yellow (72%)

Brightness & Saturation Gradients

These gradients show how the XYZ color 12.7954, 11.6453, 7.5346 changes by changing the brightness by 10 percent. The first figure shows a shift by +10% for each color and the second figure -10%.

Similar to the brightness gradients but the following saturation gradients show a change of the XYZ color 12.7954, 11.6453, 7.5346 by changing the saturation by 10% instead.

■ 12.7954, 11.6453,
7.5346

■ 12.7954, 11.6453,
7.5346

203.2664,
202.0427, 181.8308

■ 7.3638, 6.5026,
3.7152

■ 30.5402, 28.8474,
21.5718

■ 3.7390, 3.1531,
1.4704

■ 43.5841, 41.6757,
32.6266

■ 1.5556, 1.2122,
0.1957

■ 59.8962, 57.8346,
46.9303

■ 0.3632, 0.0716,
0.0000

■ 79.8418, 77.7085,
64.9014

■ 0.0000, 0.0000,
0.0000

■ 103.7862,
101.6819, 86.9585

132.0949,

130.1392, 113.5200

165.1332,
163.4646, 145.0046

■ 12.7954, 11.6453,
7.5346

■ 12.7954, 11.6453,
7.5346

■ 11.7986, 10.2208,
5.4480

■ 13.9499, 13.2573,
10.0683

■ 10.9512, 8.9749,
3.7815

■ 15.2682, 15.0618,
13.0727

■ 10.2454, 7.9007,
2.5060

■ 16.7569, 17.0656,
16.5705

■ 9.6723, 6.9901,
1.5885

■ 18.4222, 19.2748,
20.5827

■ 9.2215, 6.2339,
0.9901

■ 20.2698, 21.6952,
25.1291

■ 8.9345, 5.7433,
0.6377

■ 22.3054, 24.3322,
30.2285

■ 24.5340, 27.1912,
35.8987

■ 26.9608, 30.2773,
42.1567

■ 29.5907, 33.5955,
49.0189

Harmonies

Analogous

The Analogous color harmony consists of three colors that are next to each other on the color wheel.



13.7403, 11.6453, 10.0013



12.7954, 11.6453, 7.5346



11.4386, 11.6453, 6.4960

Triad

The Triadic color harmony groups three colors that are evenly spaced from another and form a triangle on the color wheel.



12.7954, 11.6453, 7.5346



8.6208, 11.6453, 11.6600



12.1097, 11.6453, 21.1978

Complementary

The Complementary color scheme is a pair of colors which are on the opposite of each other on the color wheel.



12.7954, 11.6453, 7.5346



11.3275, 13.0772, 20.6660

Split Complementary

Split-complementary colors differ from the complementary color scheme. The scheme consists of three colors, the original color and two neighbors of the complement color.



10.7065, 11.6453, 21.9016



12.7954, 11.6453, 7.5346



8.7677, 11.6453, 15.7982

Square

The Square scheme is like the rectangle color scheme, but the four colors are evenly spaced on the color wheel.



12.7954, 11.6453, 7.5346



9.0848, 11.6453, 8.5299



9.5044, 11.6453, 19.7551



13.3218, 11.6453, 17.9954

Rectangle

The Rectangle color scheme consists of four colors that form a rectangle on the color wheel.



12.7954, 11.6453, 7.5346



10.5142, 11.6453, 6.5602



9.5044, 11.6453, 19.7551



11.6420, 11.6453, 21.7581

Sweetspot

The Sweet Spot groups the original color and five complimentary colors.



12.7957, 11.6459, 7.5348



29.7146, 30.1688, 28.9774



13.0510, 9.7693, 14.9794



6.8753, 6.9405, 6.5336



60.6688, 63.8283, 69.5090



7.9400, 8.3535, 9.0970

Same Dimension

The Same Dimension uses a secret algorithm to generate beautiful new colors.



12.7957, 11.6459, 7.5348



21.1321, 18.3082, 9.7636



15.2630, 16.5805, 8.3573



4.0955, 4.2093, 4.2211



9.2381, 5.9321, 0.6581



43.3666, 26.8967, 2.9059

Inverse Universe

The Inverse Universe completely reimagines the original color for something new.



11.3275, 13.0772, 20.6660



18.1091, 21.2227, 36.6986



9.0816, 8.5855, 19.9173



4.0018, 4.3020, 5.0626



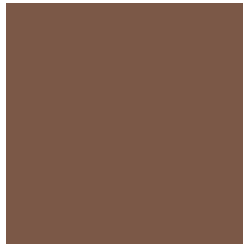
6.8761, 7.8347, 20.5351



31.9990, 35.7706, 97.6877

Previews

White Background



This preview shows how the XYZ color 12.7954, 11.6453, 7.5346 looks on a white background.

Color Contrast Check

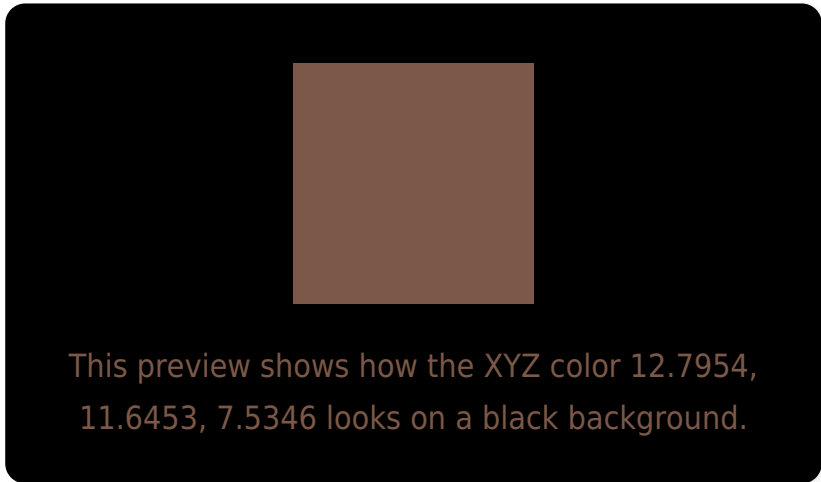
Large Text (above 18pt) WCAG AA ✓ Pass

Any Text WCAG AA ✓ Pass

Large Text (above 18pt) WCAG AAA ✓ Pass

Any Text WCAG AAA × Fail

Black Background



Color Contrast Check

Large Text (above 18pt) WCAG AA ✓ Pass

Any Text WCAG AA × Fail

Large Text (above 18pt) WCAG AAA × Fail

Any Text WCAG AAA × Fail

If you want to check with other color combinations, try the [Color Contrast Checker](#).

XYZ 12.7954, 11.6453, 7.5346

Background



This preview shows how black text looks on a background with the XYZ color 12.7954, 11.6453, 7.5346.



This preview shows how white text looks on a background with the XYZ color 12.7954, 11.6453,

Color Blindness Simulation

Color vision deficiency is a very complex topic, and I could not describe the different causes any better than Wikipedia does, so if you want to learn more, you should check out their [article about color blindness](#).

Dichromacy



Original Color

12.7954, 11.6453, 7.5346

Protanopia

10.9324, 11.6985, 8.3385

Deuteranopia

11.8721, 11.6739, 7.4219



Tritanopia

13.6377, 11.6297, 11.6512

Trichromacy



Original Color

12.7954, 11.6453, 7.5346

Protanomaly

11.5808, 11.6381, 8.1146

Deuteranomaly

12.1827, 11.7063, 7.4118

Tritanomaly

13.2402, 11.5808, 9.9250

Monochromacy



Original Color

12.7954, 11.6453, 7.5346

Achromatopsia

11.3621, 11.9538, 13.0177

Achromatomaly

11.7080, 11.7742, 10.8881

CSS Examples

Text

The CSS property to change the color of the text to XYZ 12.7954, 11.6453, 7.5346 is called "color". The color property can be set on classes, ids or directly on the HTML element.

This example shows how text in the color `rgb(123, 88, 71)` looks like.

```
.text, #text, p{  
    color:rgb(123, 88, 71)  
}
```

If you want to add a text shadow in that color use the text-shadow property, you can generate a text shadow directly with our [CSS Text Shadow Generator](#).

Here you see how black text with a 4 pixel rgb(123, 88, 71) colored shadow looks like.

```
.shadow{ text-shadow: 4px 4px 2px rgb(123, 88, 71) }
```

Border

The CSS property to change the border of an element to XYZ 12.7954, 11.6453, 7.5346 is called "border". The border property can be set on classes, ids or directly on the HTML element.

This example shows the color as border, it can be applied via the CSS property "border" or "border-color".

```
.border, #border, table{ border:4px solid rgb(123, 88, 71) }
```


If only the border color should be changed use the property border-color.

```
.border{ border-color:rgb(123, 88, 71) }
```

If you want to add a box shadow in that color use:

Here you see how a box with a 4 pixel rgb(123, 88, 71) colored shadow looks like.

```
.boxshadow{ -moz-box-shadow:4px 4px 4px  
4px rgb(123, 88, 71); -webkit-box-  
shadow:4px 4px 4px 4px rgb(123, 88, 71);  
box-shadow:4px 4px 4px 4px rgb(123, 88,  
71) }
```

Background

The CSS property to change the background color of an element to XYZ 12.7954, 11.6453, 7.5346 is called "background". The background property can be set on classes, ids or directly on the HTML element.

```
.background, #background, body{  
background: rgb(123, 88, 71) }
```

If only the background color should be changed can be used:

```
.background{ background-color: rgb(123, 88,  
71) }
```

This example shows the color as background, it is applied via the CSS property "background".

To optimize and compress your CSS code, you can use our [online CSS compressor and optimizer](#) based on csstidy. If you want to create a linear or radial gradient as background or border, check our [CSS Gradient Generator](#).

Hey! You found this booklet interesting? Support Converting Colors with the new Membership Option!

The pro membership hides all ads, plus gives you double the colors in the color bucket, and more awesome pro features!

[Learn more, Memberships starting at \\$2.50/m!](#)

**Follow me
on Twitter!**

@ConvertingColor