

# Converting Colors

XYZ(128.2987, 85.4557,  
29.4804)

Have a look what the booklet for  
XYZ(128.2987, 85.4557, 29.4804)  
contains.

<b>XYZ(58.2814, 49.3173, 26.1861)</b> .....	3
<b><i>Conversions</i></b> .....	4
<b><i>Details</i></b> .....	6
<b><i>Harmonies</i></b> .....	12
<b><i>Previews</i></b> .....	24
<b><i>Color Blindness Simulation</i></b> .....	28
<b><i>CSS Examples</i></b> .....	31

# **Color**

**XYZ(58.2814, 49.3173,  
26.1861)**

# Conversions

## Conversions Part 1

Format	Color
Hex	FFA47E
RGB	255, 164, 126
RGB Percent	100%, 64%, 49%
CMY	0.0000, 0.3568, 0.5059
CMYK	0.00, 0.36, 0.51, 0.00
HSL	18°, 100%, 75%
HSV	18°, 51%, 100%
XYZ	58.2814, 49.3173, 26.1861
YIQ	186.8770, 66.4340, 7.4740

# Conversions

## Conversions Part 2

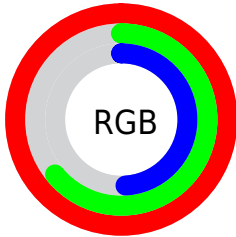
Format	Color
<a href="#">RYB</a>	<a href="#">255, 180, 126</a>
Decimal	<a href="#">16753790</a>
<a href="#">CIELab</a>	<a href="#">75.65, 29.75, 33.64</a>
<a href="#">CIElCh</a>	<a href="#">76, 44.905, 48.514</a>
<a href="#">Yxy</a>	<a href="#">49.3173, 0.4356, 0.3686</a>
<a href="#">Android (android.graphics.Color)</a>	<a href="#">4294943870 (0xFFFFA47E)</a>
<a href="#">YUV</a>	<a href="#">186.8770, -30.0124, 59.7439</a>
<a href="#">Hunter-Lab</a>	<a href="#">70.2263, 25.2427, 27.0502</a>

# Details

The XYZ color **58.2814, 49.3173, 26.1861** is a light color, and the websafe version is hex **FF9966**. A complement of this color would be **51.4658, 61.2785, 103.7229**, and the grayscale version is **47.3036, 49.7670, 54.1963**.

A 20% lighter version of the original color is **74.9699, 75.7011, 53.3083**, and **29.4946, 23.4928, 9.8175** is the 20% darker color. If you saturate the color by 10%, you get **53.8465, 42.7537, 17.5985**, and if you desaturate by 10%, it is **63.5934, 56.9642, 37.1356**.

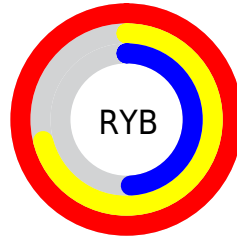
# Distribution



Red (100%)

Green (64%)

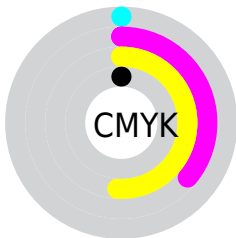
Blue (49%)



Red (100%)

Yellow (71%)

Blue (49%)

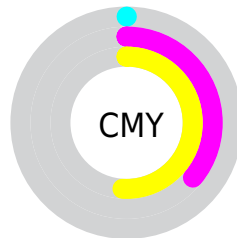


Cyan (0%)

Magenta (36%)

Yellow (51%)

Black (0%)



Cyan (0%)

Magenta (36%)


Yellow (51%)


# Brightness & Saturation Gradients

These gradients show how the XYZ color 58.2814, 49.3173, 26.1861 changes by changing the brightness by 10 percent. The first figure shows a shift by +10% for each color and the second figure -10%.


Similar to the brightness gradients but the following saturation gradients show a change of the XYZ color 58.2814, 49.3173, 26.1861 by changing the saturation by 10% instead.





 58.2814, 49.3173,  
26.1861

 58.2814, 49.3173,  
26.1861


408.1707,  
383.9901, 297.3289

 42.2791, 34.8712,  
16.7359


 101.4531, 89.1625,  
54.5628

 29.5119, 23.5637,  
9.8864


 129.3533,  
115.3305, 74.3263

 19.6146, 15.0103,  
5.2191


 161.9500,  
146.1746, 98.3648

 12.2219, 8.8266,  
2.3154

199.6087,  
182.0791, 127.0966

 6.9682, 4.6283,  
0.7398

242.6948,  
223.4286, 160.9404

 3.4884, 2.0308,  
0.0000

291.5736,

 1.4170, 0.6253,

270.6073, 200.3147

0.0000

346.6104,  
323.9997, 245.6380

■ 0.2683, 0.0000,  
0.0000

■ 0.0000, 0.0000,  
0.0000

■ 58.2814, 49.3173,  
26.1861

■ 58.2814, 49.3173,  
26.1861

■ 53.8465, 42.7537,  
17.5985

■ 63.5934, 56.9642,  
37.1356

■ 50.2334, 37.2148,  
11.1925

■ 69.8258, 65.7342,  
50.6035

■ 47.3858, 32.6476,  
6.7657

■ 77.0233, 75.6745,  
66.7360

■ 45.2370, 28.9903,  
4.0757

■ 85.2264, 86.8269,  
85.6672

■ 43.7647, 26.3095,  
2.7716

94.4732, 99.2312,  
107.5221

95.0499, 99.9999,  
108.9000

# Harmonies

## Analogous

The Analogous color harmony consists of three colors that are next to each other on the color wheel.



63.7253, 49.3173, 40.4338



58.2814, 49.3173, 26.1861



50.1305, 49.3173, 20.1688

# Triad

The Triadic color harmony groups three colors that are evenly spaced from another and form a triangle on the color wheel.



58.2814, 49.3173, 26.1861



32.8897, 49.3173, 45.0877



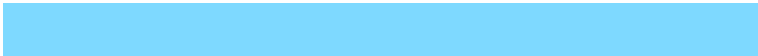
52.1358, 49.3173, 109.8590

# Complementary

The Complementary color scheme is a pair of colors which are on the opposite of each other on the color wheel.



58.2814, 49.3173, 26.1861



51.4658, 61.2785, 103.7229

# Split Complementary

Split-complementary colors differ from the complementary color scheme. The scheme consists of three colors, the original color and two neighbors of the complement color.



43.7629, 49.3173, 112.2161



58.2814, 49.3173, 26.1861



33.2918, 49.3173, 69.5860

# Square

The Square scheme is like the rectangle color scheme, but the four colors are evenly spaced on the color wheel.



58.2814, 49.3173, 26.1861



35.8906, 49.3173, 28.7220



37.0626, 49.3173, 95.8121



59.8981, 49.3173, 90.0929



# Rectangle

The Rectangle color scheme consists of four colors that form a rectangle on the color wheel.



58.2814, 49.3173, 26.1861



44.5477, 49.3173, 19.9548



37.0626, 49.3173, 95.8121



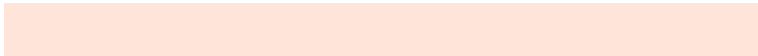
49.2812, 49.3173, 112.8917

# Sweetspot

The Sweet Spot groups the original color and five complimentary colors.



58.2826, 49.3198, 26.1870



81.4806, 81.7541, 76.9609



61.4149, 41.2676, 71.3675



17.0723, 16.9982, 15.6248



0.0000, 0.0000, 0.0000



20.3446, 21.4041, 23.3091



# Same Dimension

The Same Dimension uses a secret algorithm to generate beautiful new colors.



58.2826, 49.3198, 26.1870



53.6817, 42.5054, 17.2925



72.4887, 77.7319, 30.9224



18.4454, 18.8590, 18.8123



22.9798, 13.9708, 1.4855

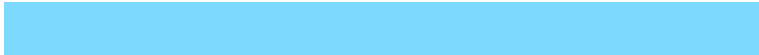


2.3273, 1.5400, 0.1746



# Inverse Universe

The Inverse Universe completely reimagines the original color for something new.



51.4658, 61.2785, 103.7229



46.0876, 55.5834, 102.9073



38.2019, 34.7508, 99.3016



18.0764, 19.5244, 23.0658



18.0821, 21.0738, 52.5492



1.8555, 2.2417, 5.1482



# Previews

## White Background



This preview shows how the XYZ color 58.2814, 49.3173, 26.1861 looks on a white background.

## Color Contrast Check

Large Text (above 18pt) WCAG AA × Fail

Any Text WCAG AA × Fail

Large Text (above 18pt) WCAG AAA × Fail

Any Text WCAG AAA × Fail



# Black Background



This preview shows how the XYZ color 58.2814, 49.3173, 26.1861 looks on a black background.

## Color Contrast Check

Large Text (above 18pt) WCAG AA ✓ Pass

Any Text WCAG AA ✓ Pass

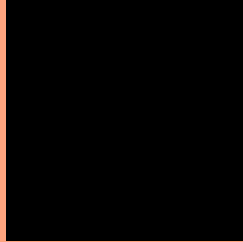
Large Text (above 18pt) WCAG AAA ✓ Pass

Any Text WCAG AAA ✓ Pass

If you want to check with other color combinations, try the [Color Contrast Checker](#).

**XYZ 58.2814, 49.3173, 26.1861**

## **Background**



This preview shows how black text looks on a background with the XYZ color 58.2814, 49.3173, 26.1861.



This preview shows how white text looks on a background with the XYZ color 58.2814, 49.3173,



# Color Blindness Simulation

Color vision deficiency is a very complex topic, and I could not describe the different causes any better than Wikipedia does, so if you want to learn more, you should check out their [article about color blindness](#).

## Dichromacy



### Original Color

58.2814, 49.3173, 26.1861

### Protanopia

46.2309, 49.7074, 30.0795

### Deuteranopia

50.4357, 49.5176, 25.6385



## Tritanopia

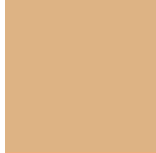
61.1615, 49.3419, 44.8285

# Trichromacy



## Original Color

58.2814, 49.3173, 26.1861



## Protanomaly

50.1038, 49.2783, 28.7007



## Deuteranomaly

53.0351, 49.3895, 25.8067



## Tritanomaly

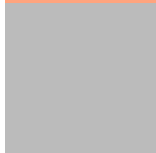
59.9013, 49.1163, 37.3336

# Monochromacy



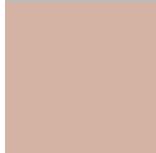
## Original Color

58.2814, 49.3173, 26.1861



## Achromatopsia

47.2335, 49.6933, 54.1160



## Achromatomaly

50.0630, 48.9539, 42.4077

# CSS Examples

## Text

The CSS property to change the color of the text to XYZ 58.2814, 49.3173, 26.1861 is called "color". The color property can be set on classes, ids or directly on the HTML element.

This example shows how text in the color `rgb(255, 164, 126)` looks like.

```
.text, #text, p{  
    color:rgb(255, 164, 126)  
}
```

If you want to add a text shadow in that color use the text-shadow property, you can generate a text shadow directly with our [CSS Text Shadow Generator](#).

Here you see how black text with a 4 pixel rgb(255, 164, 126) colored shadow looks like.

```
.shadow{ text-shadow: 4px 4px 2px rgb(255, 164, 126) }
```

## Border

The CSS property to change the border of an element to XYZ 58.2814, 49.3173, 26.1861 is called "border". The border property can be set on classes, ids or directly on the HTML element.

This example shows the color as border, it can be applied via the CSS property "border" or "border-color".

```
.border, #border, table{ border:4px solid rgb(255, 164, 126) }
```



If only the border color should be changed use the property `border-color`.

```
.border{ border-color:rgb(255, 164, 126) }
```

If you want to add a box shadow in that color use:

Here you see how a box with a 4 pixel `rgb(255, 164, 126)` colored shadow looks like.

```
.boxshadow{ -moz-box-shadow:4px 4px 4px  
4px rgb(255, 164, 126); -webkit-box-  
shadow:4px 4px 4px 4px rgb(255, 164, 126);  
box-shadow:4px 4px 4px 4px rgb(255, 164,  
126) }
```

# Background

The CSS property to change the background color of an element to XYZ 58.2814, 49.3173, 26.1861 is called "background". The background property can be set on classes, ids or directly on the HTML element.

```
.background, #background, body{  
background: rgb(255, 164, 126) }
```

If only the background color should be changed can be used:

```
.background{ background-color: rgb(255,  
164, 126) }
```

This example shows the color as background, it is applied via the CSS property "background".

To optimize and compress your CSS code, you can use our [online CSS compressor and optimizer](#) based on csstidy. If you want to create a linear or radial gradient as background or border, check our [CSS Gradient Generator](#).

Hey! You found this booklet interesting? Support Converting Colors with the new Membership Option!

The pro membership hides all ads, plus gives you double the colors in the color bucket, and more awesome pro features!

**[Learn more, Memberships starting at \\$2.50/m!](#)**

**Follow me  
on Twitter!**

@ConvertingColor