

Converting Colors

XYZ(13.2108, 12.4582, 9.1055)

Have a look what the booklet for
XYZ(13.2108, 12.4582, 9.1055)
contains.

XYZ(13.2108, 12.4582, 9.1055)	3
<i>Conversions</i>	4
<i>Details</i>	6
<i>Harmonies</i>	12
<i>Previews</i>	24
<i>Color Blindness Simulation</i>	28
<i>CSS Examples</i>	31

Color

**XYZ(13.2108, 12.4582,
9.1055)**

Conversions

Conversions Part 1

Format	Color
Hex	795D4F
RGB	121, 93, 79
RGB Percent	47%, 36%, 31%
CMY	0.5255, 0.6353, 0.6902
CMYK	0.00, 0.23, 0.35, 0.53
HSL	20°, 21%, 39%
HSV	20°, 35%, 47%
XYZ	13.2108, 12.4582, 9.1055
YIQ	99.7760, 21.1820, 1.5820

Conversions

Conversions Part 2

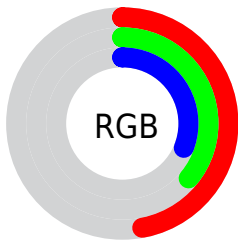
Format	Color
R_{YB}	121, 100, 79
Decimal	7953743
CIE _{Lab}	41.94, 9.28, 12.43
CIE _{LCh}	42, 15.510, 53.254
Yxy	12.4582, 0.3799, 0.3583
Android (android.graphics.Color)	4286143823 (0xFF795D4F)
YUV	99.7760, -10.2426, 18.6134
Hunter-Lab	35.2962, 5.0414, 9.4120

Details

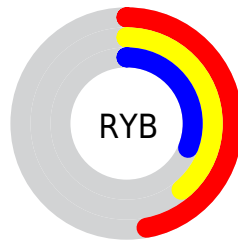
The XYZ color **13.2108, 12.4582, 9.1055** is a dark color, and the websafe version is hex **996666**. A complement of this color would be **11.9331, 13.5576, 20.0771**, and the grayscale version is **12.0778, 12.7068, 13.8377**.

A 20% lighter version of the original color is **31.1743, 30.2021, 24.6086**, and **3.9184, 3.4940, 2.0580** is the 20% darker color. If you saturate the color by 10%, you get **12.1389, 10.9562, 6.7696**, and if you desaturate by 10%, it is **14.4382, 14.1428, 11.8892**.

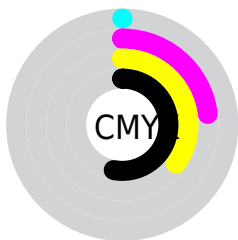
Distribution



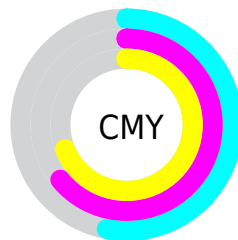
- Red (47%)
- Green (36%)
- Blue (31%)



- Red (47%)
- Yellow (39%)
- Blue (31%)



- Cyan (0%)
- Magenta (23%)
- Yellow (35%)
- Black (53%)



- Cyan (53%)
- Magenta (64%)
- Yellow (69%)

Brightness & Saturation Gradients

These gradients show how the XYZ color 13.2108, 12.4582, 9.1055 changes by changing the brightness by 10 percent. The first figure shows a shift by +10% for each color and the second figure -10%.

Similar to the brightness gradients but the following saturation gradients show a change of the XYZ color 13.2108, 12.4582, 9.1055 by changing the saturation by 10% instead.

■ 13.2108, 12.4582,
9.1055

■ 13.2108, 12.4582,
9.1055

205.8747,
207.4155, 194.4099

■ 7.6519, 7.0565,
4.7123

■ 31.2801, 30.3269,
24.6798

■ 3.9229, 3.4975,
2.0237

■ 44.5211, 43.5628,
36.6980

■ 1.6586, 1.3966,
0.5698

■ 61.0536, 60.1788,
52.0950

■ 0.4302, 0.2142,
0.0000

■ 81.2429, 80.5594,
71.2892

■ 0.0000, 0.0000,
0.0000

■ 105.4542,
105.0890, 94.6993

134.0531,

134.1519, 122.7438

167.4048,
168.1327, 155.8411

■ 13.2108, 12.4582,
9.1055

■ 13.2108, 12.4582,
9.1055

■ 12.1389, 10.9562,
6.7696

■ 14.4382, 14.1428,
11.8892

■ 11.2149, 9.6287,
4.8569

■ 15.8265, 16.0144,
15.1418

■ 10.4319, 8.4696,
3.3418

■ 17.3817, 18.0791,
18.8840

■ 9.7822, 7.4716,
2.1955

■ 19.1095, 20.3426,
23.1352

■ 9.2568, 6.6269,
1.3852

■ 21.0152, 22.8099,
27.9135

■ 8.8438, 5.9260,
0.8615

■ 23.1037, 25.4863,
33.2362

■ 8.6555, 5.6057,
0.6258

■ 25.3800, 28.3765,
39.1200

■ 27.8487, 31.4853,
45.5805

■ 30.5144, 34.8172,
52.6330

Harmonies

Analogous

The Analogous color harmony consists of three colors that are next to each other on the color wheel.



13.9861, 12.4582, 11.2200



13.2108, 12.4582, 9.1055



12.1022, 12.4582, 8.2077

Triad

The Triadic color harmony groups three colors that are evenly spaced from another and form a triangle on the color wheel.



13.2108, 12.4582, 9.1055



9.7824, 12.4582, 12.8360



12.7337, 12.4582, 20.2380

Complementary

The Complementary color scheme is a pair of colors which are on the opposite of each other on the color wheel.



13.2108, 12.4582, 9.1055



11.9331, 13.5576, 20.0771

Split Complementary

Split-complementary colors differ from the complementary color scheme. The scheme consists of three colors, the original color and two neighbors of the complement color.



11.5838, 12.4582, 20.8572



13.2108, 12.4582, 9.1055



9.9275, 12.4582, 16.2156

Square

The Square scheme is like the rectangle color scheme, but the four colors are evenly spaced on the color wheel.



13.2108, 12.4582, 9.1055



10.1597, 12.4582, 10.1248



10.5696, 12.4582, 19.2841



13.6985, 12.4582, 17.7073

Rectangle

The Rectangle color scheme consists of four colors that form a rectangle on the color wheel.



13.2108, 12.4582, 9.1055



11.3425, 12.4582, 8.2971



10.5696, 12.4582, 19.2841



12.3542, 12.4582, 20.6918

Sweetspot

The Sweet Spot groups the original color and five complimentary colors.



13.2111, 12.4588, 9.1058



29.5457, 30.2834, 29.9935



13.3350, 10.7186, 15.2760



6.6850, 6.8304, 6.6885



59.0181, 62.0916, 67.6177



7.4413, 7.8288, 8.5256

Same Dimension

The Same Dimension uses a secret algorithm to generate beautiful new colors.



13.2111, 12.4588, 9.1058



22.0377, 20.0445, 12.7636



15.3138, 16.6641, 9.8066



4.0974, 4.2132, 4.2218



9.2661, 5.9881, 0.6674



43.4914, 27.1463, 2.9475

Inverse Universe

The Inverse Universe completely reimagines the original color for something new.



11.9331, 13.5576, 20.0771



19.3624, 22.3293, 35.6824



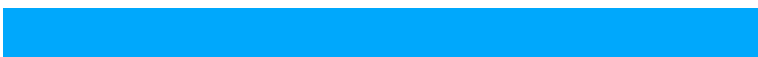
10.0035, 9.6984, 19.4339



3.9998, 4.2979, 5.0619



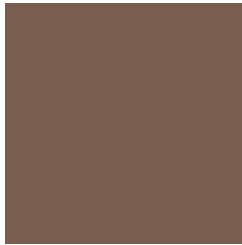
6.8140, 7.7105, 20.5144



31.6968, 35.1663, 97.5870

Previews

White Background



This preview shows how the XYZ color 13.2108, 12.4582, 9.1055 looks on a white background.

Color Contrast Check

Large Text (above 18pt) WCAG AA ✓ Pass

Any Text WCAG AA ✓ Pass

Large Text (above 18pt) WCAG AAA ✓ Pass

Any Text WCAG AAA × Fail

Black Background



This preview shows how the XYZ color 13.2108, 12.4582, 9.1055 looks on a black background.

Color Contrast Check

Large Text (above 18pt) WCAG AA ✓ Pass

Any Text WCAG AA × Fail

Large Text (above 18pt) WCAG AAA × Fail

Any Text WCAG AAA × Fail

If you want to check with other color combinations, try the [Color Contrast Checker](#).

XYZ 13.2108, 12.4582, 9.1055

Background



This preview shows how black text looks on a background with the XYZ color 13.2108, 12.4582, 9.1055.



This preview shows how white text looks on a background with the XYZ color 13.2108, 12.4582,

Color Blindness Simulation

Color vision deficiency is a very complex topic, and I could not describe the different causes any better than Wikipedia does, so if you want to learn more, you should check out their [article about color blindness](#).

Dichromacy



Original Color

13.2108, 12.4582, 9.1055

Protanopia

11.8105, 12.5361, 9.7799

Deuteranopia

12.7060, 12.4619, 9.1329



Tritanopia

13.9822, 12.3863, 12.9631

Trichromacy



Original Color

13.2108, 12.4582, 9.1055

Protanomaly

12.3154, 12.5230, 9.5527

Deuteranomaly

12.8852, 12.4215, 9.1156

Tritanomaly

13.6126, 12.3579, 11.3407

Monochromacy



Original Color

13.2108, 12.4582, 9.1055

Achromatopsia

12.1130, 12.7438, 13.8780

Achromatomaly

12.3908, 12.5102, 11.8869

CSS Examples

Text

The CSS property to change the color of the text to XYZ 13.2108, 12.4582, 9.1055 is called "color". The color property can be set on classes, ids or directly on the HTML element.

This example shows how text in the color rgb(121, 93, 79) looks like.

```
.text, #text, p{  
    color:rgb(121, 93, 79)  
}
```

If you want to add a text shadow in that color use the text-shadow property, you can generate a text shadow directly with our [CSS Text Shadow Generator](#).

Here you see how black text with a 4 pixel rgb(121, 93, 79) colored shadow looks like.

```
.shadow{ text-shadow: 4px 4px 2px rgb(121, 93, 79) }
```

Border

The CSS property to change the border of an element to XYZ 13.2108, 12.4582, 9.1055 is called "border". The border property can be set on classes, ids or directly on the HTML element.

This example shows the color as border, it can be applied via the CSS property "border" or "border-color".

```
.border, #border, table{ border:4px solid rgb(121, 93, 79) }
```


If only the border color should be changed use the property border-color.

```
.border{ border-color:rgb(121, 93, 79) }
```

If you want to add a box shadow in that color use:

Here you see how a box with a 4 pixel rgb(121, 93, 79) colored shadow looks like.

```
.boxshadow{ -moz-box-shadow:4px 4px 4px  
4px rgb(121, 93, 79); -webkit-box-  
shadow:4px 4px 4px 4px rgb(121, 93, 79);  
box-shadow:4px 4px 4px 4px rgb(121, 93,  
79) }
```

Background

The CSS property to change the background color of an element to XYZ 13.2108, 12.4582, 9.1055 is called "background". The background property can be set on classes, ids or directly on the HTML element.

```
.background, #background, body{  
background: rgb(121, 93, 79) }
```

If only the background color should be changed can be used:

```
.background{ background-color: rgb(121, 93,  
79) }
```

This example shows the color as background, it is applied via the CSS property "background".

To optimize and compress your CSS code, you can use our [online CSS compressor and optimizer](#) based on csstidy. If you want to create a linear or radial gradient as background or border, check our [CSS Gradient Generator](#).

Hey! You found this booklet interesting? Support Converting Colors with the new Membership Option!

The pro membership hides all ads, plus gives you double the colors in the color bucket, and more awesome pro features!

[Learn more, Memberships starting at \\$2.50/m!](#)

**Follow me
on Twitter!**

@ConvertingColor