

Converting Colors

XYZ(13.4613, 11.9117, 11.0409)

Have a look what the booklet for
XYZ(13.4613, 11.9117, 11.0409)
contains.

XYZ(13.4613, 11.9117, 11.0409)	3
<i>Conversions</i>	4
<i>Details</i>	6
<i>Harmonies</i>	12
<i>Previews</i>	24
<i>Color Blindness Simulation</i>	28
<i>CSS Examples</i>	31

Color

**XYZ(13.4613, 11.9117,
11.0409)**

Conversions

Conversions Part 1

Format	Color
Hex	7B5859
RGB	123, 88, 89
RGB Percent	48%, 35%, 35%
CMY	0.5176, 0.6549, 0.6510
CMYK	0.00, 0.28, 0.28, 0.52
HSL	358°, 17%, 41%
HSV	358°, 28%, 48%
XYZ	13.4613, 11.9117, 11.0409
YIQ	98.5790, 20.5390, 7.7310

Conversions

Conversions Part 2

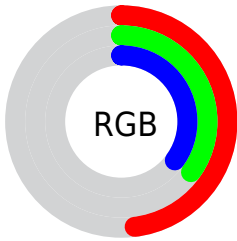
Format	Color
R_{YB}	123, 88, 89
Decimal	8083545
CIE _{Lab}	41.08, 14.61, 5.14
CIE _{LCh}	41, 15.491, 19.388
Yxy	11.9117, 0.3697, 0.3271
Android (android.graphics.Color)	4286273625 (0xFF7B5859)
YUV	98.5790, -4.7224, 21.4172
Hunter-Lab	34.5133, 9.2224, 5.1923

Details

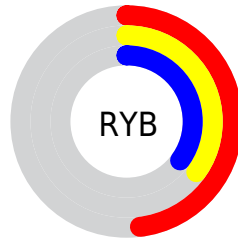
The XYZ color **13.4613, 11.9117, 11.0409** is a dark color, and the websafe version is hex **996666**. A complement of this color would be **14.6209, 17.6461, 21.0487**, and the grayscale version is **11.7621, 12.3747, 13.4760**.

A 20% lighter version of the original color is **31.6532, 29.2711, 28.4077**, and **4.0302, 3.2542, 2.7986** is the 20% darker color. If you saturate the color by 10%, you get **12.0738, 9.8756, 8.3005**, and if you desaturate by 10%, it is **15.1013, 14.3222, 14.2677**.

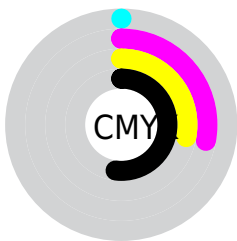
Distribution



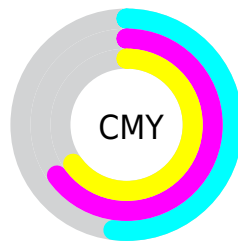
- Red (48%)
- Green (35%)
- Blue (35%)



- Red (48%)
- Yellow (35%)
- Blue (35%)



- Cyan (0%)
- Magenta (28%)
- Yellow (28%)
- Black (52%)



- Cyan (52%)
- Magenta (65%)
- Yellow (65%)

Brightness & Saturation Gradients

These gradients show how the XYZ color 13.4613, 11.9117, 11.0409 changes by changing the brightness by 10 percent. The first figure shows a shift by +10% for each color and the second figure -10%.

Similar to the brightness gradients but the following saturation gradients show a change of the XYZ color 13.4613, 11.9117, 11.0409 by changing the saturation by 10% instead.

■ 13.4613, 11.9117,
11.0409

■ 13.4613, 11.9117,
11.0409

207.4317,
203.8198, 208.6954

■ 7.8261, 6.6836,
5.9798

■ 31.7244, 29.3342,
28.3736

■ 4.0348, 3.2650,
2.7642

■ 45.0830, 42.2973,
41.4823

■ 1.7218, 1.2716,
0.9755

■ 61.7469, 58.6076,
58.1106

■ 0.4699, 0.1191,
0.0000

■ 82.0813, 78.6494,
78.6771

■ 0.0000, 0.0000,
0.0000

■ 106.4516,
102.8072, 103.6003

135.2232,

131.4652, 133.2987

168.7615,
165.0080, 168.1909

■ 13.4613, 11.9117,
11.0409

■ 13.4613, 11.9117,
11.0409

■ 12.0738, 9.8756,
8.3005

■ 15.1013, 14.3222,
14.2677

■ 10.9254, 8.1937,
6.0222

■ 17.0044, 17.1229,
18.0020

■ 10.0029, 6.8461,
4.1808

■ 19.1819, 20.3306,
22.2648

■ 9.2913, 5.8106,
2.7483

■ 21.6440, 23.9606,
27.0754

■ 8.7740, 5.0622,
1.6935

■ 24.4004, 28.0274,
32.4523

■ 8.4318, 4.5720,
0.9809

■ 27.4606, 32.5450,
38.4131

■ 8.2184, 4.2640,
0.5436

■ 30.8332, 37.5266,
44.9747

■ 8.1876, 4.2187,
0.4834

■ 34.5269, 42.9849,
52.1532

■ 38.5498, 48.9320,
59.9642

Harmonies

Analogous

The Analogous color harmony consists of three colors that are next to each other on the color wheel.



13.5566, 11.9117, 14.1307



13.4613, 11.9117, 11.0409



12.7717, 11.9117, 8.8536

Triad

The Triadic color harmony groups three colors that are evenly spaced from another and form a triangle on the color wheel.



13.4613, 11.9117, 11.0409



9.7745, 11.9117, 9.3775



10.9324, 11.9117, 19.9696

Complementary

The Complementary color scheme is a pair of colors which are on the opposite of each other on the color wheel.



13.4613, 11.9117, 11.0409



14.6209, 17.6461, 21.0487

Split Complementary

Split-complementary colors differ from the complementary color scheme. The scheme consists of three colors, the original color and two neighbors of the complement color.



9.9859, 11.9117, 18.1973



13.4613, 11.9117, 11.0409



9.3470, 11.9117, 11.8743

Square

The Square scheme is like the rectangle color scheme, but the four colors are evenly spaced on the color wheel.



13.4613, 11.9117, 11.0409



10.6265, 11.9117, 8.0076



9.4218, 11.9117, 15.1112



12.0466, 11.9117, 19.6479

Rectangle

The Rectangle color scheme consists of four colors that form a rectangle on the color wheel.



13.4613, 11.9117, 11.0409



12.0914, 11.9117, 8.0401



9.4218, 11.9117, 15.1112



10.5854, 11.9117, 19.5889

Sweetspot

The Sweet Spot groups the original color and five complimentary colors.



13.4616, 11.9123, 11.0411



30.1713, 30.2518, 31.6899



15.0677, 12.5355, 20.3644



7.0015, 6.9712, 7.2590



60.6688, 63.8283, 69.5090



7.9400, 8.3535, 9.0970

Same Dimension

The Same Dimension uses a secret algorithm to generate beautiful new colors.



13.4616, 11.9123, 11.0411



22.4693, 18.9287, 16.5413



14.9141, 14.8839, 11.3201



4.0025, 4.0167, 4.2108



8.4697, 4.3640, 0.4982



40.3475, 20.7953, 2.0939

Inverse Universe

The Inverse Universe completely reimagines the original color for something new.



13.4616, 11.9123, 11.0411



22.4693, 18.9287, 16.5413



12.8232, 13.9513, 20.7560



4.0025, 4.0167, 4.2108



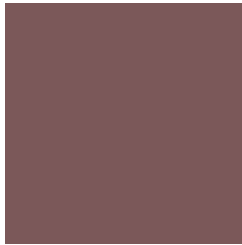
8.4697, 4.3640, 0.4982



40.3475, 20.7953, 2.0939

Previews

White Background



This preview shows how the XYZ color 13.4613, 11.9117, 11.0409 looks on a white background.

Color Contrast Check

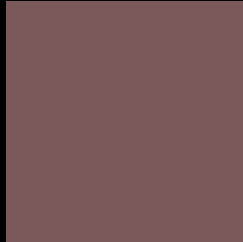
Large Text (above 18pt) WCAG AA ✓ Pass

Any Text WCAG AA ✓ Pass

Large Text (above 18pt) WCAG AAA ✓ Pass

Any Text WCAG AAA × Fail

Black Background



This preview shows how the XYZ color 13.4613, 11.9117, 11.0409 looks on a black background.

Color Contrast Check

Large Text (above 18pt) WCAG AA ✓ Pass

Any Text WCAG AA × Fail

Large Text (above 18pt) WCAG AAA × Fail

Any Text WCAG AAA × Fail

If you want to check with other color combinations, try the [Color Contrast Checker](#).

XYZ 13.4613, 11.9117, 11.0409

Background



This preview shows how black text looks on a background with the XYZ color 13.4613, 11.9117, 11.0409.



This preview shows how white text looks on a background with the XYZ color 13.4613, 11.9117,

Color Blindness Simulation

Color vision deficiency is a very complex topic, and I could not describe the different causes any better than Wikipedia does, so if you want to learn more, you should check out their [article about color blindness](#).

Dichromacy



Original Color

13.4613, 11.9117, 11.0409

Protanopia

11.5506, 12.0669, 12.3100

Deuteranopia

12.1946, 12.0250, 10.9108



Tritanopia

13.7408, 11.9096, 12.1642

Trichromacy



Original Color

13.4613, 11.9117, 11.0409

Protanomaly

12.1188, 11.9663, 11.7962

Deuteranomaly

12.6588, 12.0037, 10.8823

Tritanomaly

13.6521, 11.8742, 11.6976

Monochromacy



Original Color

13.4613, 11.9117, 11.0409

Achromatopsia

11.8596, 12.4772, 13.5877

Achromatomaly

12.3421, 12.1988, 12.5306

CSS Examples

Text

The CSS property to change the color of the text to XYZ 13.4613, 11.9117, 11.0409 is called "color". The color property can be set on classes, ids or directly on the HTML element.

This example shows how text in the color `rgb(123, 88, 89)` looks like.

```
.text, #text, p{  
    color:rgb(123, 88, 89)  
}
```

If you want to add a text shadow in that color use the text-shadow property, you can generate a text shadow directly with our [CSS Text Shadow Generator](#).

Here you see how black text with a 4 pixel rgb(123, 88, 89) colored shadow looks like.

```
.shadow{ text-shadow: 4px 4px 2px rgb(123, 88, 89) }
```

Border

The CSS property to change the border of an element to XYZ 13.4613, 11.9117, 11.0409 is called "border". The border property can be set on classes, ids or directly on the HTML element.

This example shows the color as border, it can be applied via the CSS property "border" or "border-color".

```
.border, #border, table{ border:4px solid rgb(123, 88, 89) }
```


If only the border color should be changed use the property `border-color`.

```
.border{ border-color:rgb(123, 88, 89) }
```

If you want to add a box shadow in that color use:

Here you see how a box with a 4 pixel `rgb(123, 88, 89)` colored shadow looks like.

```
.boxshadow{ -moz-box-shadow:4px 4px 4px  
4px rgb(123, 88, 89); -webkit-box-  
shadow:4px 4px 4px 4px rgb(123, 88, 89);  
box-shadow:4px 4px 4px 4px rgb(123, 88,  
89) }
```

Background

The CSS property to change the background color of an element to XYZ 13.4613, 11.9117, 11.0409 is called "background". The background property can be set on classes, ids or directly on the HTML element.

```
.background, #background, body{  
background: rgb(123, 88, 89) }
```

If only the background color should be changed can be used:

```
.background{ background-color: rgb(123, 88,  
89) }
```

This example shows the color as background, it is applied via the CSS property "background".

To optimize and compress your CSS code, you can use our [online CSS compressor and optimizer](#) based on csstidy. If you want to create a linear or radial gradient as background or border, check our [CSS Gradient Generator](#).

Hey! You found this booklet interesting? Support Converting Colors with the new Membership Option!

The pro membership hides all ads, plus gives you double the colors in the color bucket, and more awesome pro features!

[Learn more, Memberships starting at \\$2.50/m!](#)

**Follow me
on Twitter!**

@ConvertingColor