

Converting Colors

XYZ(131.7819, 91.7213,
233.5424)

Have a look what the booklet for
XYZ(131.7819, 91.7213, 233.5424)
contains.

XYZ(78.5818, 67.0636, 103.4106)	3
<i>Conversions</i>	4
<i>Details</i>	6
<i>Harmonies</i>	12
<i>Previews</i>	24
<i>Color Blindness Simulation</i>	28
<i>CSS Examples</i>	31

Color

**XYZ(78.5818, 67.0636,
103.4106)**

Conversions

Conversions Part 1

Format	Color
Hex	FFC2FF
RGB	255, 194, 255
RGB Percent	100%, 76%, 100%
CMY	0.0000, 0.2392, 0.0000
CMYK	0.00, 0.24, 0.00, 0.00
HSL	300°, 100%, 88%
HSV	300°, 24%, 100%
XYZ	78.5818, 67.0636, 103.4106
YIQ	219.1930, 16.7750, 31.9030

Conversions

Conversions Part 2

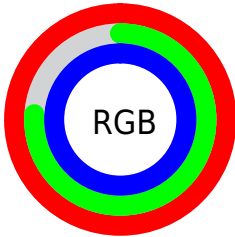
Format	Color
RYB	255, 194, 255
Decimal	16761599
CIELab	85.54, 31.62, -21.53
CIELCh	86, 38.257, 325.753
Yxy	67.0636, 0.3155, 0.2693
Android (android.graphics.Color)	4294951679 (0xFFFFC2FF)
YUV	219.1930, 17.6529, 31.4027
Hunter-Lab	81.8924, 27.9723, -17.5445

Details

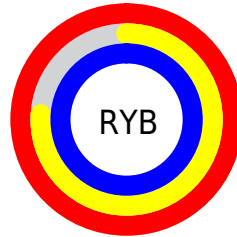
The XYZ color **78.5818, 67.0636, 103.4106** is a light color, and the websafe version is hex **FFCCFF**. A complement of this color would be **67.7479, 86.8854, 64.2422**, and the grayscale version is **67.3404, 70.8474, 77.1528**.

A 20% lighter version of the original color is **93.7872, 97.4744, 108.4791**, and **42.8598, 34.8392, 57.8917** is the 20% darker color. If you saturate the color by 10%, you get **73.3862, 56.6724, 101.6787**, and if you desaturate by 10%, it is **84.7537, 79.4073, 105.4679**.

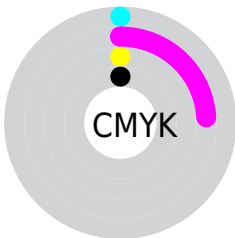
Distribution



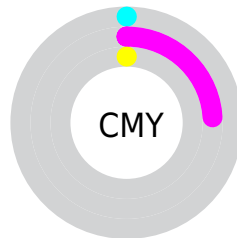
- Red (100%)
- Green (76%)
- Blue (100%)



- Red (100%)
- Yellow (76%)
- Blue (100%)



- Cyan (0%)
- Magenta (24%)
- Yellow (0%)
- Black (0%)



- Cyan (0%)
- Magenta (24%)
- Yellow (0%)

Brightness & Saturation Gradients

These gradients show how the XYZ color 78.5818, 67.0636, 103.4106 changes by changing the brightness by 10 percent. The first figure shows a shift by +10% for each color and the second figure -10%.

Similar to the brightness gradients but the following saturation gradients show a change of the XYZ color 78.5818, 67.0636, 103.4106 by changing the saturation by 10% instead.

78.5818, 67.0636,
103.4106

78.5818, 67.0636,
103.4106

478.9501,
450.1711, 592.4127

58.8565, 49.1363,
78.5192

130.3310,
115.0115, 167.9289

42.7435, 34.7276,
57.9816

163.0856,
145.8010, 208.3929

29.8776, 23.4531,
41.3793

200.9139,
181.6466, 254.8848

19.8933, 14.9285,
28.2936

244.1814,
222.9328, 307.8233

12.4253, 8.7692,
18.3061

293.2535,
270.0439, 367.6267

7.1083, 4.5909,
10.9983

348.4953,

3.5768, 2.0093,

323.3644, 434.7138

5.9515

410.2724,
383.2787, 509.5029

■ 1.4656, 0.6129,
2.7473

■ 0.3023, 0.0000,
0.9671

■ 78.5818, 67.0636,
103.4106

■ 78.5818, 67.0636,
103.4106

■ 73.3862, 56.6724,
101.6787

■ 84.7537, 79.4073,
105.4679

■ 69.1133, 48.1267,
100.2544

■ 91.9442, 93.7883,
107.8647

■ 65.7104, 41.3208,
99.1201

95.0500, 100.0000,
108.9000

■ 63.1176, 36.1353,
98.2559

■ 61.2679, 32.4358,
97.6393

■ 60.0831, 30.0663,
97.2444

■ 59.4681, 28.8361,
97.0394

■ 59.2900, 28.4800,
96.9800

Harmonies

Analogous

The Analogous color harmony consists of three colors that are next to each other on the color wheel.



71.2840, 67.0636, 125.1816



78.5818, 67.0636, 103.4106



81.9070, 67.0636, 76.6239

Triad

The Triadic color harmony groups three colors that are evenly spaced from another and form a triangle on the color wheel.



78.5818, 67.0636, 103.4106



64.9879, 67.0636, 34.9286



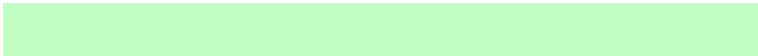
49.8408, 67.0636, 95.8584

Complementary

The Complementary color scheme is a pair of colors which are on the opposite of each other on the color wheel.



78.5818, 67.0636, 103.4106



67.7479, 86.8854, 64.2422

Split Complementary

Split-complementary colors differ from the complementary color scheme. The scheme consists of three colors, the original color and two neighbors of the complement color.



48.4832, 67.0636, 69.5326



78.5818, 67.0636, 103.4106



56.7515, 67.0636, 37.8334

Square

The Square scheme is like the rectangle color scheme, but the four colors are evenly spaced on the color wheel.



78.5818, 67.0636, 103.4106



73.6192, 67.0636, 40.1668



50.8989, 67.0636, 49.2575



54.7902, 67.0636, 120.1717

Rectangle

The Rectangle color scheme consists of four colors that form a rectangle on the color wheel.



78.5818, 67.0636, 103.4106



81.2211, 67.0636, 60.7799



50.8989, 67.0636, 49.2575



48.9697, 67.0636, 86.8040

Sweetspot

The Sweet Spot groups the original color and five complimentary colors.



78.5831, 67.0661, 103.4110



89.6176, 89.1353, 107.0892



59.5927, 57.2762, 102.5223



19.0868, 18.8885, 22.8898



0.0000, 0.0000, 0.0000



20.3446, 21.4041, 23.3091

Same Dimension

The Same Dimension uses a secret algorithm to generate beautiful new colors.



78.5831, 67.0661, 103.4110



75.8240, 61.5481, 102.4913



74.0559, 65.2553, 79.5715



18.7928, 18.3004, 22.7918



30.9803, 14.8814, 50.6741



3.0164, 1.4490, 4.9340

Inverse Universe

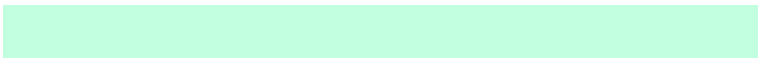
The Inverse Universe completely reimagines the original color for something new.



78.5831, 67.0661, 103.4110



75.8240, 61.5481, 102.4913



71.5325, 88.3992, 84.1717



18.7928, 18.3004, 22.7918



30.9803, 14.8814, 50.6741



3.0164, 1.4490, 4.9340

Previews

White Background



This preview shows how the XYZ color 78.5818, 67.0636, 103.4106 looks on a white background.

Color Contrast Check

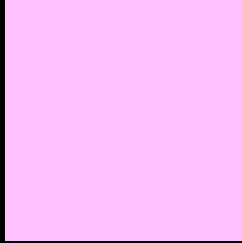
Large Text (above 18pt) WCAG AA × Fail

Any Text WCAG AA × Fail

Large Text (above 18pt) WCAG AAA × Fail

Any Text WCAG AAA × Fail

Black Background



This preview shows how the XYZ color 78.5818, 67.0636, 103.4106 looks on a black background.

Color Contrast Check

Large Text (above 18pt) WCAG AA ✓ Pass

Any Text WCAG AA ✓ Pass

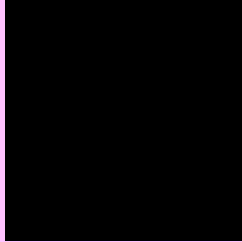
Large Text (above 18pt) WCAG AAA ✓ Pass

Any Text WCAG AAA ✓ Pass

If you want to check with other color combinations, try the [Color Contrast Checker](#).

XYZ 78.5818, 67.0636, 103.4106

Background



This preview shows how black text looks on a background with the XYZ color 78.5818, 67.0636, 103.4106.



This preview shows how white text looks on a background with the XYZ color 78.5818, 67.0636,

Color Blindness Simulation

Color vision deficiency is a very complex topic, and I could not describe the different causes any better than Wikipedia does, so if you want to learn more, you should check out their [article about color blindness](#).

Dichromacy



Original Color

78.5818, 67.0636, 103.4106

Protanopia

66.4953, 67.1443, 104.0632

Deuteranopia

68.6901, 67.2281, 101.4514



Tritanopia

72.8354, 67.1070, 74.7598

Trichromacy



Original Color

78.5818, 67.0636, 103.4106



Protanomaly

70.3127, 66.5706, 103.7513



Deuteranomaly

71.9556, 67.1006, 102.0877



Tritanomaly

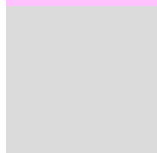
74.7628, 66.8531, 84.5648

Monochromacy



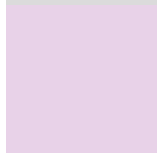
Original Color

78.5818, 67.0636, 103.4106



Achromatopsia

67.3311, 70.8376, 77.1421



Achromatomaly

70.8908, 69.0752, 85.9404

CSS Examples

Text

The CSS property to change the color of the text to XYZ 78.5818, 67.0636, 103.4106 is called "color". The color property can be set on classes, ids or directly on the HTML element.

This example shows how text in the color `rgb(255, 194, 255)` looks like.

```
.text, #text, p{  
    color:rgb(255, 194, 255)  
}
```

If you want to add a text shadow in that color use the text-shadow property, you can generate a text shadow directly with our [CSS Text Shadow Generator](#).

Here you see how black text with a 4 pixel rgb(255, 194, 255) colored shadow looks like.

```
.shadow{ text-shadow: 4px 4px 2px rgb(255, 194, 255) }
```

Border

The CSS property to change the border of an element to XYZ 78.5818, 67.0636, 103.4106 is called "border". The border property can be set on classes, ids or directly on the HTML element.

This example shows the color as border, it can be applied via the CSS property "border" or "border-color".

```
.border, #border, table{ border:4px solid rgb(255, 194, 255) }
```


If only the border color should be changed use the property `border-color`.

```
.border{ border-color:rgb(255, 194, 255) }
```

If you want to add a box shadow in that color use:

Here you see how a box with a 4 pixel `rgb(255, 194, 255)` colored shadow looks like.

```
.boxshadow{ -moz-box-shadow:4px 4px 4px  
4px rgb(255, 194, 255); -webkit-box-  
shadow:4px 4px 4px 4px rgb(255, 194, 255);  
box-shadow:4px 4px 4px 4px rgb(255, 194,  
255) }
```

Background

The CSS property to change the background color of an element to XYZ 78.5818, 67.0636, 103.4106 is called "background". The background property can be set on classes, ids or directly on the HTML element.

```
.background, #background, body{  
background: rgb(255, 194, 255) }
```

If only the background color should be changed can be used:

```
.background{ background-color: rgb(255,  
194, 255) }
```

This example shows the color as background, it is applied via the CSS property "background".

To optimize and compress your CSS code, you can use our [online CSS compressor and optimizer](#) based on csstidy. If you want to create a linear or radial gradient as background or border, check our [CSS Gradient Generator](#).

Hey! You found this booklet interesting? Support Converting Colors with the new Membership Option!

The pro membership hides all ads, plus gives you double the colors in the color bucket, and more awesome pro features!

[Learn more, Memberships starting at \\$2.50/m!](#)

**Follow me
on Twitter!**

@ConvertingColor