

Converting Colors

XYZ(138.2477, 100.0000,
109.8548)

Have a look what the booklet for
XYZ(138.2477, 100.0000, 109.8548)
contains.

XYZ(80.1766, 70.2533, 103.9422)	3
<i>Conversions</i>	4
<i>Details</i>	6
<i>Harmonies</i>	12
<i>Previews</i>	24
<i>Color Blindness Simulation</i>	28
<i>CSS Examples</i>	31

Color

**XYZ(80.1766, 70.2533,
103.9422)**

Conversions

Conversions Part 1

Format	Color
Hex	FFC9FF
RGB	255, 201, 255
RGB Percent	100%, 79%, 100%
CMY	0.0000, 0.2117, 0.0000
CMYK	0.00, 0.21, 0.00, 0.00
HSL	300°, 100%, 89%
HSV	300°, 21%, 100%
XYZ	80.1766, 70.2533, 103.9422
YIQ	223.3020, 14.8500, 28.2420

Conversions

Conversions Part 2

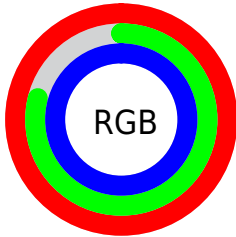
Format	Color
R_{YB}	255, 201, 255
Decimal	16763391
CIE _{Lab}	87.12, 27.95, -19.13
CIE _{LCh}	87, 33.868, 325.602
Yxy	70.2533, 0.3152, 0.2762
Android (android.graphics.Color)	4294953471 (0xFFFFC9FF)
YUV	223.3020, 15.6271, 27.7991
Hunter-Lab	83.8172, 24.0666, -14.8538

Details

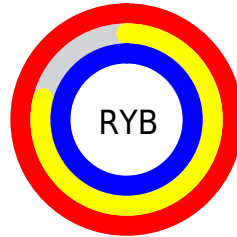
The XYZ color **80.1766, 70.2533, 103.9422** is a light color, and the websafe version is hex **FFCCFF**. A complement of this color would be **70.3923, 88.1556, 68.5676**, and the grayscale version is **70.2403, 73.8983, 80.4752**.

A 20% lighter version of the original color is **95.0500, 100.0000, 108.9000**, and **43.9155, 36.9504, 58.2436** is the 20% darker color. If you saturate the color by 10%, you get **74.7186, 59.3372, 102.1229**, and if you desaturate by 10%, it is **86.6241, 83.1482, 106.0914**.

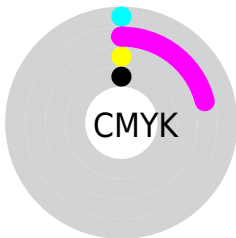
Distribution



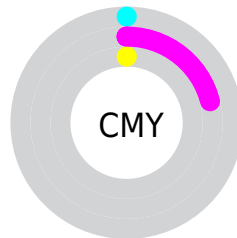
- Red (100%)
- Green (79%)
- Blue (100%)



- Red (100%)
- Yellow (79%)
- Blue (100%)



- Cyan (0%)
- Magenta (21%)
- Yellow (0%)
- Black (0%)



- Cyan (0%)
- Magenta (21%)
- Yellow (0%)

Brightness & Saturation Gradients

These gradients show how the XYZ color 80.1766, 70.2533, 103.9422 changes by changing the brightness by 10 percent. The first figure shows a shift by +10% for each color and the second figure -10%.

Similar to the brightness gradients but the following saturation gradients show a change of the XYZ color 80.1766, 70.2533, 103.9422 by changing the saturation by 10% instead.

80.1766, 70.2533,
103.9422

80.1766, 70.2533,
103.9422

484.2553,
461.4389, 594.1134

60.1727, 51.7331,
78.9617

132.5632,
119.5699, 168.6632

43.8078, 36.7923,
58.3432

165.6766,
151.1351, 209.2407

30.7167, 25.0468,
41.6681

203.8905,
187.8173, 255.8544

20.5340, 16.1119,
28.5179

247.5703,
230.0011, 308.9227

12.8943, 9.6034,
18.4740

297.0813,
278.0707, 368.8643

7.4323, 5.1368,
11.1179

352.7889,

3.7826, 2.3277,

332.4106, 436.0975

6.0310

415.0584,
393.4052, 511.0411

■ 1.5799, 0.7883,
2.7948

■ 0.3793, 0.0000,
0.9909

■ 80.1766, 70.2533,
103.9422

■ 80.1766, 70.2533,
103.9422

■ 74.7186, 59.3372,
102.1229

■ 86.6241, 83.1482,
106.0914

■ 70.1973, 50.2945,
100.6158

■ 94.1022, 98.1045,
108.5841

■ 66.5612, 43.0224,
99.4037

95.0500, 100.0000,
108.9000

■ 63.7524, 37.4048,
98.4675

■ 61.7059, 33.3118,
97.7853

■ 60.3472, 30.5944,
97.3324

■ 59.5867, 29.0733,
97.0789

■ 59.2900, 28.4800,
96.9800

Harmonies

Analogous

The Analogous color harmony consists of three colors that are next to each other on the color wheel.



73.5889, 70.2533, 123.0755



80.1766, 70.2533, 103.9422



83.1777, 70.2533, 79.8951

Triad

The Triadic color harmony groups three colors that are evenly spaced from another and form a triangle on the color wheel.



80.1766, 70.2533, 103.9422



67.9509, 70.2533, 40.6628



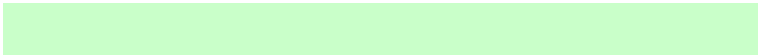
53.9329, 70.2533, 96.9811

Complementary

The Complementary color scheme is a pair of colors which are on the opposite of each other on the color wheel.



80.1766, 70.2533, 103.9422



70.3923, 88.1556, 68.5676

Split Complementary

Split-complementary colors differ from the complementary color scheme. The scheme consists of three colors, the original color and two neighbors of the complement color.



52.6819, 70.2533, 73.1906



80.1766, 70.2533, 103.9422



60.3927, 70.2533, 43.4565

Square

The Square scheme is like the rectangle color scheme, but the four colors are evenly spaced on the color wheel.



80.1766, 70.2533, 103.9422



75.7731, 70.2533, 45.7965



54.9544, 70.2533, 54.3607



58.5166, 70.2533, 118.5301

Rectangle

The Rectangle color scheme consists of four colors that form a rectangle on the color wheel.



80.1766, 70.2533, 103.9422



82.5801, 70.2533, 65.3288



54.9544, 70.2533, 54.3607



53.1250, 70.2533, 88.8637

Sweetspot

The Sweet Spot groups the original color and five complimentary colors.



80.1780, 70.2560, 103.9427



90.3618, 90.6237, 107.3373



63.0270, 61.4143, 103.1400



19.2369, 19.1886, 22.9398



0.0000, 0.0000, 0.0000



20.3446, 21.4041, 23.3091

Same Dimension

The Same Dimension uses a secret algorithm to generate beautiful new colors.



80.1780, 70.2560, 103.9427



77.9754, 65.8507, 103.2085



76.1320, 68.6376, 82.6367



18.7928, 18.3004, 22.7918



30.9803, 14.8814, 50.6741



3.0164, 1.4490, 4.9340

Inverse Universe

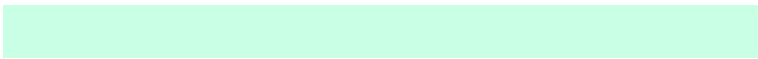
The Inverse Universe completely reimagines the original color for something new.



80.1780, 70.2560, 103.9427



77.9754, 65.8507, 103.2085



73.8530, 89.5399, 86.7914



18.7928, 18.3004, 22.7918



30.9803, 14.8814, 50.6741



3.0164, 1.4490, 4.9340

Previews

White Background



This preview shows how the XYZ color 80.1766, 70.2533, 103.9422 looks on a white background.

Color Contrast Check

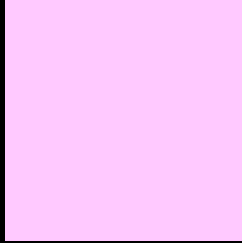
Large Text (above 18pt) WCAG AA × Fail

Any Text WCAG AA × Fail

Large Text (above 18pt) WCAG AAA × Fail

Any Text WCAG AAA × Fail

Black Background



This preview shows how the XYZ color 80.1766, 70.2533, 103.9422 looks on a black background.

Color Contrast Check

Large Text (above 18pt) WCAG AA ✓ Pass

Any Text WCAG AA ✓ Pass

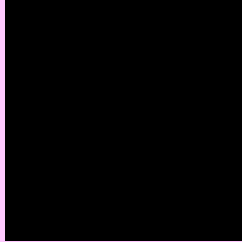
Large Text (above 18pt) WCAG AAA ✓ Pass

Any Text WCAG AAA ✓ Pass

If you want to check with other color combinations, try the [Color Contrast Checker](#).

XYZ 80.1766, 70.2533, 103.9422

Background



This preview shows how black text looks on a background with the XYZ color 80.1766, 70.2533, 103.9422.



This preview shows how white text looks on a background with the XYZ color 80.1766, 70.2533,

Color Blindness Simulation

Color vision deficiency is a very complex topic, and I could not describe the different causes any better than Wikipedia does, so if you want to learn more, you should check out their [article about color blindness](#).

Dichromacy



Original Color

80.1766, 70.2533, 103.9422

Protanopia

69.4412, 70.5473, 104.5648

Deuteranopia

71.9553, 70.3683, 102.7185



Tritanopia

75.0564, 70.2774, 79.4210

Trichromacy



Original Color

80.1766, 70.2533, 103.9422



Protanomaly

72.7083, 69.9773, 104.2826



Deuteranomaly

74.9508, 70.4189, 103.4078



Tritanomaly

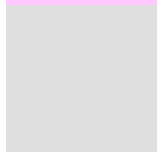
76.9716, 70.3562, 88.1205

Monochromacy



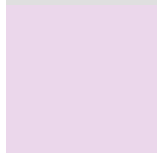
Original Color

80.1766, 70.2533, 103.9422



Achromatopsia

70.1384, 73.7910, 80.3584



Achromatomaly

73.5568, 72.2612, 88.6682

CSS Examples

Text

The CSS property to change the color of the text to XYZ 80.1766, 70.2533, 103.9422 is called "color". The color property can be set on classes, ids or directly on the HTML element.

This example shows how text in the color `rgb(255, 201, 255)` looks like.

```
.text, #text, p{  
    color:rgb(255, 201, 255)  
}
```

If you want to add a text shadow in that color use the text-shadow property, you can generate a text shadow directly with our [CSS Text Shadow Generator](#).

Here you see how black text with a 4 pixel rgb(255, 201, 255) colored shadow looks like.

```
.shadow{ text-shadow: 4px 4px 2px rgb(255, 201, 255) }
```

Border

The CSS property to change the border of an element to XYZ 80.1766, 70.2533, 103.9422 is called "border". The border property can be set on classes, ids or directly on the HTML element.

This example shows the color as border, it can be applied via the CSS property "border" or "border-color".

```
.border, #border, table{ border:4px solid rgb(255, 201, 255) }
```


If only the border color should be changed use the property border-color.

```
.border{ border-color:rgb(255, 201, 255) }
```

If you want to add a box shadow in that color use:

Here you see how a box with a 4 pixel rgb(255, 201, 255) colored shadow looks like.

```
.boxshadow{ -moz-box-shadow:4px 4px 4px  
4px rgb(255, 201, 255); -webkit-box-  
shadow:4px 4px 4px 4px rgb(255, 201, 255);  
box-shadow:4px 4px 4px 4px rgb(255, 201,  
255) }
```

Background

The CSS property to change the background color of an element to XYZ 80.1766, 70.2533, 103.9422 is called "background". The background property can be set on classes, ids or directly on the HTML element.

```
.background, #background, body{  
background: rgb(255, 201, 255) }
```

If only the background color should be changed can be used:

```
.background{ background-color: rgb(255,  
201, 255) }
```

This example shows the color as background, it is applied via the CSS property "background".

To optimize and compress your CSS code, you can use our [online CSS compressor and optimizer](#) based on csstidy. If you want to create a linear or radial gradient as background or border, check our [CSS Gradient Generator](#).

Hey! You found this booklet interesting? Support Converting Colors with the new Membership Option!

The pro membership hides all ads, plus gives you double the colors in the color bucket, and more awesome pro features!

[Learn more, Memberships starting at \\$2.50/m!](#)

**Follow me
on Twitter!**

@ConvertingColor