

Converting Colors

XYZ(14.5301, 13.1133, 19.1535)

Have a look what the booklet for
XYZ(14.5301, 13.1133, 19.1535)
contains.

| | |
|--|----|
| XYZ(14.5349, 13.0503, 19.2057) | 3 |
| <i>Conversions</i> | 4 |
| <i>Details</i> | 6 |
| <i>Harmonies</i> | 12 |
| <i>Previews</i> | 24 |
| <i>Color Blindness Simulation</i> | 28 |
| <i>CSS Examples</i> | 31 |

Color

**XYZ(14.5349, 13.0503,
19.2057)**

Conversions

Conversions Part 1

| Format | Color |
|---------------|---------------------------|
| Hex | 745E77 |
| RGB | 116, 94, 119 |
| RGB Percent | 45%, 37%, 47% |
| CMY | 0.5451, 0.6314, 0.5333 |
| CMYK | 0.03, 0.21, 0.00, 0.53 |
| HSL | 293°, 12%, 42% |
| HSV | 293°, 21%, 47% |
| XYZ | 14.5349, 13.0503, 19.2057 |
| YIQ | 103.4280, 5.0870, 12.4390 |

Conversions

Conversions Part 2

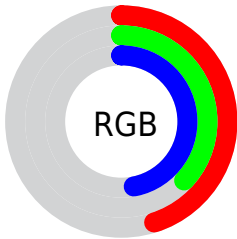
| Format | Color |
|-------------------------------------|------------------------------|
| R_{YB} | 116, 94, 119 |
| Decimal | 7626359 |
| CIE _{Lab} | 42.84, 13.76, -10.72 |
| CIE _{LCh} | 43, 17.444, 322.092 |
| Yxy | 13.0503, 0.3106, 0.2789 |
| Android (android.graphics.Color) | 4285816439 (0xFF745E77) |
| YUV | 103.4280, 7.6770, 11.0256 |
| Hunter-Lab | 36.1252, 8.6000, -6.2335 |

Details

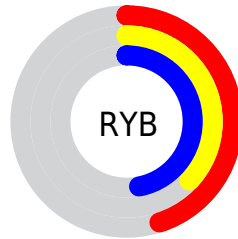
The XYZ color **14.5349, 13.0503, 19.2057** is a dark color, and the websafe version is hex **666699**. A complement of this color would be **13.5475, 16.5436, 13.0695**, and the grayscale version is **12.9852, 13.6614, 14.8773**.

A 20% lighter version of the original color is **33.6245, 31.5159, 42.8391**, and **4.5782, 3.7978, 6.4530** is the 20% darker color. If you saturate the color by 10%, you get **13.3690, 10.9979, 18.8712**, and if you desaturate by 10%, it is **15.8677, 15.4317, 19.5953**.

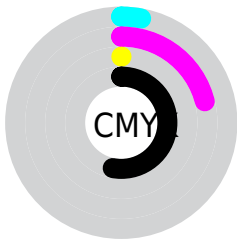
Distribution



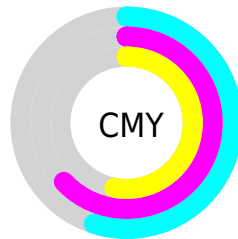
- Red (45%)
- Green (37%)
- Blue (47%)



- Red (45%)
- Yellow (37%)
- Blue (47%)



- Cyan (3%)
- Magenta (21%)
- Yellow (0%)
- Black (53%)



- Cyan (55%)
- Magenta (63%)
- Yellow (53%)

Brightness & Saturation Gradients

These gradients show how the XYZ color 14.5349, 13.0503, 19.2057 changes by changing the brightness by 10 percent. The first figure shows a shift by +10% for each color and the second figure -10%.

Similar to the brightness gradients but the following saturation gradients show a change of the XYZ color 14.5349, 13.0503, 19.2057 by changing the saturation by 10% instead.

■ 14.5349, 13.0503,
19.2057

■ 14.5349, 13.0503,
19.2057

213.9782,
211.2398, 260.0425

■ 8.5778, 7.4632,
11.6407

■ 33.6136, 31.3941,
42.9227

■ 4.5217, 3.7534,
6.3800

■ 47.4658, 44.9196,
59.9118

■ 2.0013, 1.5366,
3.0050

■ 64.6806, 61.8600,
80.8793

■ 0.6347, 0.3143,
1.0972

■ 85.6231, 82.5998,
106.2438

■ 0.0000, 0.0000,
0.0000

110.6588,
107.5232, 136.4239

140.1529,

137.0148, 171.8379

174.4710,
171.4588, 212.9046

■ 14.5349, 13.0503,
19.2057

■ 14.5349, 13.0503,
19.2057

■ 13.3690, 10.9979,
18.8712

■ 15.8677, 15.4317,
19.5953

■ 12.3613, 9.2579,
18.5885

■ 17.3732, 18.1542,
20.0415

■ 11.5042, 7.8148,
18.3551

■ 19.0584, 21.2318,
20.5467

■ 10.7889, 6.6510,
18.1681

■ 20.9294, 24.6767,
21.1130

■ 10.2057, 5.7472,
18.0244

■ 22.9922, 28.5009,
21.7424

■ 9.7437, 5.0816,
17.9203

■ 25.2526, 32.7156,
22.4368

■ 9.3903, 4.6288,
17.8515

■ 27.7159, 37.3316,
23.1980

■ 9.1225, 4.3182,
17.8057

■ 30.3872, 42.3595,
24.0276

■ 33.2718, 47.8092,
24.9275

Harmonies

Analogous

The Analogous color harmony consists of three colors that are next to each other on the color wheel.



13.3916, 13.0503, 22.1411



14.5349, 13.0503, 19.2057



15.1157, 13.0503, 15.2421

Triad

The Triadic color harmony groups three colors that are evenly spaced from another and form a triangle on the color wheel.



14.5349, 13.0503, 19.2057



12.7594, 13.0503, 8.1155



10.1803, 13.0503, 17.1485

Complementary

The Complementary color scheme is a pair of colors which are on the opposite of each other on the color wheel.



14.5349, 13.0503, 19.2057



13.5475, 16.5436, 13.0695

Split Complementary

Split-complementary colors differ from the complementary color scheme. The scheme consists of three colors, the original color and two neighbors of the complement color.



10.0376, 13.0503, 13.2247



14.5349, 13.0503, 19.2057



11.4660, 13.0503, 8.4423

Square

The Square scheme is like the rectangle color scheme, but the four colors are evenly spaced on the color wheel.



14.5349, 13.0503, 19.2057



14.0438, 13.0503, 9.1753



10.4921, 13.0503, 10.1650



10.8969, 13.0503, 20.8131

Rectangle

The Rectangle color scheme consists of four colors that form a rectangle on the color wheel.



14.5349, 13.0503, 19.2057



15.0787, 13.0503, 12.7287



10.4921, 13.0503, 10.1650



10.0658, 13.0503, 15.8010

Sweetspot

The Sweet Spot groups the original color and five complimentary colors.



14.5353, 13.0509, 19.2060



29.6835, 29.9221, 35.4641



12.2520, 12.3233, 19.1859



7.0033, 7.0345, 8.3954



59.0181, 62.0916, 67.6177



7.4413, 7.8288, 8.5256

Same Dimension

The Same Dimension uses a secret algorithm to generate beautiful new colors.



14.5353, 13.0509, 19.2060



25.0255, 21.5972, 34.1028



14.4163, 13.0501, 16.4638



3.7855, 3.7367, 4.6120



9.6868, 4.5850, 18.9170



46.7268, 22.0970, 92.1627

Inverse Universe

The Inverse Universe completely reimagines the original color for something new.



13.7686, 12.7910, 13.0532



23.4169, 21.0558, 21.0253



13.6700, 16.5563, 15.3516



3.7002, 3.7074, 3.9480



8.1668, 4.2004, 0.8208



39.6228, 20.3992, 3.0769

Previews

White Background



This preview shows how the XYZ color 14.5349, 13.0503, 19.2057 looks on a white background.

Color Contrast Check

Large Text (above 18pt) WCAG AA ✓ Pass

Any Text WCAG AA ✓ Pass

Large Text (above 18pt) WCAG AAA ✓ Pass

Any Text WCAG AAA × Fail

Black Background



This preview shows how the XYZ color 14.5349, 13.0503, 19.2057 looks on a black background.

Color Contrast Check

Large Text (above 18pt) WCAG AA ✓ Pass

Any Text WCAG AA × Fail

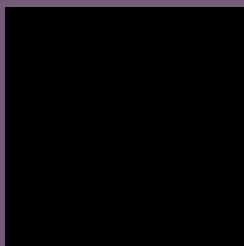
Large Text (above 18pt) WCAG AAA × Fail

Any Text WCAG AAA × Fail

If you want to check with other color combinations, try the [Color Contrast Checker](#).

XYZ 14.5349, 13.0503, 19.2057

Background



This preview shows how black text looks on a background with the XYZ color 14.5349, 13.0503, 19.2057.



This preview shows how white text looks on a background with the XYZ color 14.5349, 13.0503,

Color Blindness Simulation

Color vision deficiency is a very complex topic, and I could not describe the different causes any better than Wikipedia does, so if you want to learn more, you should check out their [article about color blindness](#).

Dichromacy



Original Color

14.5349, 13.0503, 19.2057

Protanopia

12.9562, 13.0312, 20.5713

Deuteranopia

13.3254, 13.1153, 18.9687



Tritanopia

13.7128, 13.1263, 14.9076

Trichromacy



Original Color

14.5349, 13.0503, 19.2057

Protanomaly

13.4741, 13.0241, 20.2161

Deuteranomaly

13.7291, 13.0455, 18.9340

Tritanomaly

14.0134, 13.1147, 16.2608

Monochromacy



Original Color

14.5349, 13.0503, 19.2057

Achromatopsia

12.8919, 13.5633, 14.7705

Achromatomaly

13.5018, 13.4066, 16.3441

CSS Examples

Text

The CSS property to change the color of the text to XYZ 14.5349, 13.0503, 19.2057 is called "color". The color property can be set on classes, ids or directly on the HTML element.

This example shows how text in the color `rgb(116, 94, 119)` looks like.

```
.text, #text, p{  
    color:rgb(116, 94, 119)  
}
```

If you want to add a text shadow in that color use the text-shadow property, you can generate a text shadow directly with our [CSS Text Shadow Generator](#).

Here you see how black text with a 4 pixel rgb(116, 94, 119) colored shadow looks like.

```
.shadow{ text-shadow: 4px 4px 2px rgb(116, 94, 119) }
```

Border

The CSS property to change the border of an element to XYZ 14.5349, 13.0503, 19.2057 is called "border". The border property can be set on classes, ids or directly on the HTML element.

This example shows the color as border, it can be applied via the CSS property "border" or "border-color".

```
.border, #border, table{ border:4px solid rgb(116, 94, 119) }
```


If only the border color should be changed use the property `border-color`.

```
.border{ border-color:rgb(116, 94, 119) }
```

If you want to add a box shadow in that color use:

Here you see how a box with a 4 pixel `rgb(116, 94, 119)` colored shadow looks like.

```
.boxshadow{ -moz-box-shadow:4px 4px 4px  
4px rgb(116, 94, 119); -webkit-box-  
shadow:4px 4px 4px 4px rgb(116, 94, 119);  
box-shadow:4px 4px 4px 4px rgb(116, 94,  
119) }
```

Background

The CSS property to change the background color of an element to XYZ 14.5349, 13.0503, 19.2057 is called "background". The background property can be set on classes, ids or directly on the HTML element.

```
.background, #background, body{  
background: rgb(116, 94, 119) }
```

If only the background color should be changed can be used:

```
.background{ background-color: rgb(116, 94,  
119) }
```

This example shows the color as background, it is applied via the CSS property "background".

To optimize and compress your CSS code, you can use our [online CSS compressor and optimizer](#) based on csstidy. If you want to create a linear or radial gradient as background or border, check our [CSS Gradient Generator](#).

Hey! You found this booklet interesting? Support Converting Colors with the new Membership Option!

The pro membership hides all ads, plus gives you double the colors in the color bucket, and more awesome pro features!

[Learn more, Memberships starting at \\$2.50/m!](#)

**Follow me
on Twitter!**

@ConvertingColor