

Converting Colors

XYZ(14.7320, 13.8033, 13.8838)

Have a look what the booklet for
XYZ(14.7320, 13.8033, 13.8838)
contains.

XYZ(14.6940, 13.7930, 13.9445)	3
<i>Conversions</i>	4
<i>Details</i>	6
<i>Harmonies</i>	12
<i>Previews</i>	24
<i>Color Blindness Simulation</i>	28
<i>CSS Examples</i>	31

Color

**XYZ(14.6940, 13.7930,
13.9445)**

Conversions

Conversions Part 1

Format	Color
Hex	7A6264
RGB	122, 98, 100
RGB Percent	48%, 38%, 39%
CMY	0.5216, 0.6157, 0.6078
CMYK	0.00, 0.20, 0.18, 0.52
HSL	355°, 11%, 43%
HSV	355°, 20%, 48%
XYZ	14.6940, 13.7930, 13.9445
YIQ	105.4040, 13.6620, 5.7100

Conversions

Conversions Part 2

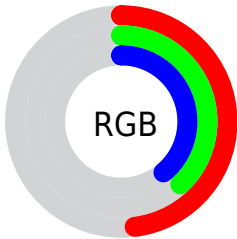
Format	Color
R_{YB}	122, 98, 100
Decimal	8020580
CIE Lab	43.93, 10.01, 2.52
CIE LCh	44, 10.326, 14.147
Yxy	13.7930, 0.3463, 0.3251
Android (android.graphics.Color)	4286210660 (0xFF7A6264)
YUV	105.4040, -2.6642, 14.5547
Hunter-Lab	37.1389, 5.6303, 3.7357

Details

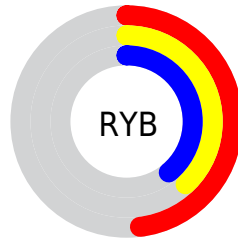
The XYZ color **14.6940, 13.7930, 13.9445** is a dark color, and the websafe version is hex **666666**. A complement of this color would be **15.3872, 17.8722, 20.4088**, and the grayscale version is **13.5416, 14.2468, 15.5148**.

A 20% lighter version of the original color is **34.0126, 32.8432, 33.8249**, and **4.5741, 4.0412, 3.9071** is the 20% darker color. If you saturate the color by 10%, you get **13.1337, 11.4799, 10.9345**, and if you desaturate by 10%, it is **16.5034, 16.4851, 17.4046**.

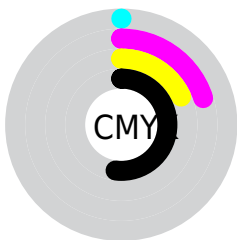
Distribution



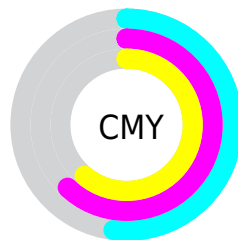
- Red (48%)
- Green (38%)
- Blue (39%)



- Red (48%)
- Yellow (38%)
- Blue (39%)



- Cyan (0%)
- Magenta (20%)
- Yellow (18%)
- Black (52%)



- Cyan (52%)
- Magenta (62%)
- Yellow (61%)

Brightness & Saturation Gradients

These gradients show how the XYZ color 14.6940, 13.7930, 13.9445 changes by changing the brightness by 10 percent. The first figure shows a shift by +10% for each color and the second figure -10%.

Similar to the brightness gradients but the following saturation gradients show a change of the XYZ color 14.6940, 13.7930, 13.9445 by changing the saturation by 10% instead.

■ 14.6940, 13.7930,
13.9445

■ 14.6940, 13.7930,
13.9445

214.9318,
215.9392, 228.3017

■ 8.6898, 7.9768,
7.9438

■ 33.8915, 32.7213,
33.7062

■ 4.5949, 4.0801,
3.9717

■ 47.8156, 46.6022,
48.3043

■ 2.0439, 1.7185,
1.6098

■ 65.1104, 63.9401,
66.6052

■ 0.6584, 0.4356,
0.2978

■ 86.1412, 85.1195,
89.0276

■ 0.0000, 0.0000,
0.0000

111.2734,
110.5247, 115.9898

140.8723,

140.5402, 147.9106

175.3033,
175.5502, 185.2084

■ 14.6940, 13.7930,
13.9445

■ 14.6940, 13.7930,
13.9445

■ 13.1337, 11.4799,
10.9345

■ 16.5034, 16.4851,
17.4046

■ 11.8105, 9.5271,
8.3553

■ 18.5710, 19.5702,
21.3312

■ 10.7131, 7.9169,
6.1873

■ 20.9068, 23.0638,
25.7412

■ 9.8289, 6.6296,
4.4093

■ 23.5199, 26.9801,
30.6503

■ 9.1439, 5.6434,
2.9981

■ 26.4190, 31.3326,
36.0733

■ 8.6426, 4.9337,
1.9280

■ 29.6124, 36.1342,
42.0246

■ 8.3071, 4.4722,
1.1699

■ 33.1080, 41.3972,
48.5181

■ 8.0882, 4.1694,
0.6809

■ 36.9137, 47.1336,
55.5669

■ 8.0818, 4.1599,
0.6687

■ 41.0367, 53.3546,
63.1839

Harmonies

Analogous

The Analogous color harmony consists of three colors that are next to each other on the color wheel.



14.6809, 13.7930, 16.2819



14.6940, 13.7930, 13.9445



14.2705, 13.7930, 12.0957

Triad

The Triadic color harmony groups three colors that are evenly spaced from another and form a triangle on the color wheel.



14.6940, 13.7930, 13.9445



12.0451, 13.7930, 12.0138



12.6851, 13.7930, 19.7787

Complementary

The Complementary color scheme is a pair of colors which are on the opposite of each other on the color wheel.



14.6940, 13.7930, 13.9445



15.3872, 17.8722, 20.4088

Split Complementary

Split-complementary colors differ from the complementary color scheme. The scheme consists of three colors, the original color and two neighbors of the complement color.



12.0139, 13.7930, 18.3773



14.6940, 13.7930, 13.9445



11.6550, 13.7930, 13.8217

Square

The Square scheme is like the rectangle color scheme, but the four colors are evenly spaced on the color wheel.



14.6940, 13.7930, 13.9445



12.7294, 13.7930, 11.0620



11.6438, 13.7930, 16.1457



13.4978, 13.7930, 19.8204

Rectangle

The Rectangle color scheme consists of four colors that form a rectangle on the color wheel.



14.6940, 13.7930, 13.9445



13.8073, 13.7930, 11.3201



11.6438, 13.7930, 16.1457



12.4362, 13.7930, 19.4450

Sweetspot

The Sweet Spot groups the original color and five complimentary colors.



14.6944, 13.7936, 13.9448



30.2638, 30.8350, 32.9598



15.6267, 14.1342, 20.3172



6.8805, 6.9918, 7.4615



59.0181, 62.0916, 67.6177



7.4413, 7.8288, 8.5256

Same Dimension

The Same Dimension uses a secret algorithm to generate beautiful new colors.



14.6944, 13.7936, 13.9448



24.4504, 22.1877, 21.8366



15.5936, 15.7451, 13.7732



4.0106, 4.0200, 4.2535



8.5072, 4.3790, 0.6957



40.4436, 20.8338, 2.6002

Inverse Universe

The Inverse Universe completely reimagines the original color for something new.



14.6944, 13.7936, 13.9448



24.4504, 22.1877, 21.8366



14.3445, 15.5907, 20.6659



4.0106, 4.0200, 4.2535



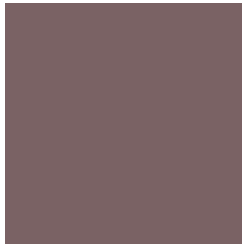
8.5072, 4.3790, 0.6957



40.4436, 20.8338, 2.6002

Previews

White Background



This preview shows how the XYZ color 14.6940, 13.7930, 13.9445 looks on a white background.

Color Contrast Check

Large Text (above 18pt) WCAG AA ✓ Pass

Any Text WCAG AA ✓ Pass

Large Text (above 18pt) WCAG AAA ✓ Pass

Any Text WCAG AAA × Fail

Black Background



This preview shows how the XYZ color 14.6940, 13.7930, 13.9445 looks on a black background.

Color Contrast Check

Large Text (above 18pt) WCAG AA ✓ Pass

Any Text WCAG AA × Fail

Large Text (above 18pt) WCAG AAA × Fail

Any Text WCAG AAA × Fail

If you want to check with other color combinations, try the [Color Contrast Checker](#).

XYZ 14.6940, 13.7930, 13.9445

Background



This preview shows how black text looks on a background with the XYZ color 14.6940, 13.7930, 13.9445.



This preview shows how white text looks on a background with the XYZ color 14.6940, 13.7930,

Color Blindness Simulation

Color vision deficiency is a very complex topic, and I could not describe the different causes any better than Wikipedia does, so if you want to learn more, you should check out their [article about color blindness](#).

Dichromacy



Original Color

14.6940, 13.7930, 13.9445

Protanopia

13.3424, 13.9441, 14.8202

Deuteranopia

14.1564, 13.9405, 14.0012



Tritanopia

14.9929, 13.7803, 15.2342

Trichromacy



Original Color

14.6940, 13.7930, 13.9445

Protanomaly

13.8317, 13.9068, 14.5256

Deuteranomaly

14.3286, 13.8860, 13.9817

Tritanomaly

14.8913, 13.7396, 14.6991

Monochromacy



Original Color

14.6940, 13.7930, 13.9445

Achromatopsia

13.4271, 14.1263, 15.3836

Achromatomaly

13.7551, 13.8615, 14.7825

CSS Examples

Text

The CSS property to change the color of the text to XYZ 14.6940, 13.7930, 13.9445 is called "color". The color property can be set on classes, ids or directly on the HTML element.

This example shows how text in the color `rgb(122, 98, 100)` looks like.

```
.text, #text, p{  
    color:rgb(122, 98, 100)  
}
```

If you want to add a text shadow in that color use the text-shadow property, you can generate a text shadow directly with our [CSS Text Shadow Generator](#).

Here you see how black text with a 4 pixel rgb(122, 98, 100) colored shadow looks like.

```
.shadow{ text-shadow: 4px 4px 2px rgb(122, 98, 100) }
```

Border

The CSS property to change the border of an element to XYZ 14.6940, 13.7930, 13.9445 is called "border". The border property can be set on classes, ids or directly on the HTML element.

This example shows the color as border, it can be applied via the CSS property "border" or "border-color".

```
.border, #border, table{ border:4px solid rgb(122, 98, 100) }
```


If only the border color should be changed use the property border-color.

```
.border{ border-color:rgb(122, 98, 100) }
```

If you want to add a box shadow in that color use:

Here you see how a box with a 4 pixel rgb(122, 98, 100) colored shadow looks like.

```
.boxshadow{ -moz-box-shadow:4px 4px 4px  
4px rgb(122, 98, 100); -webkit-box-  
shadow:4px 4px 4px 4px rgb(122, 98, 100);  
box-shadow:4px 4px 4px 4px rgb(122, 98,  
100) }
```

Background

The CSS property to change the background color of an element to XYZ 14.6940, 13.7930, 13.9445 is called "background". The background property can be set on classes, ids or directly on the HTML element.

```
.background, #background, body{  
background: rgb(122, 98, 100) }
```

If only the background color should be changed can be used:

```
.background{ background-color: rgb(122, 98,  
100) }
```

This example shows the color as background, it is applied via the CSS property "background".

To optimize and compress your CSS code, you can use our [online CSS compressor and optimizer](#) based on csstidy. If you want to create a linear or radial gradient as background or border, check our [CSS Gradient Generator](#).

Hey! You found this booklet interesting? Support Converting Colors with the new Membership Option!

The pro membership hides all ads, plus gives you double the colors in the color bucket, and more awesome pro features!

[Learn more, Memberships starting at \\$2.50/m!](#)

**Follow me
on Twitter!**

@ConvertingColor