

Converting Colors

XYZ(142.6022, 100.0000,
359.7013)

Have a look what the booklet for
XYZ(142.6022, 100.0000, 359.7013)
contains.

XYZ(82.3366, 74.5732, 104.6622)	3
<i>Conversions</i>	4
<i>Details</i>	6
<i>Harmonies</i>	12
<i>Previews</i>	24
<i>Color Blindness Simulation</i>	28
<i>CSS Examples</i>	31

Color

**XYZ(82.3366, 74.5732,
104.6622)**

Conversions

Conversions Part 1

Format	Color
Hex	FFD2FF
RGB	255, 210, 255
RGB Percent	100%, 82%, 100%
CMY	0.0000, 0.1764, 0.0000
CMYK	0.00, 0.18, 0.00, 0.00
HSL	300°, 100%, 91%
HSV	300°, 18%, 100%
XYZ	82.3366, 74.5732, 104.6622
YIQ	228.5850, 12.3750, 23.5350

Conversions

Conversions Part 2

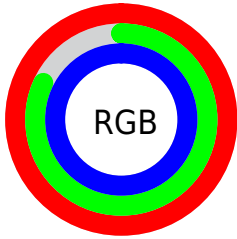
Format	Color
R_{YB}	255, 210, 255
Decimal	16765695
CIE _{Lab}	89.19, 23.22, -16.01
CIE _{LCh}	89, 28.208, 325.407
Yxy	74.5732, 0.3148, 0.2851
Android (android.graphics.Color)	4294955775 (0xFFFFD2FF)
YUV	228.5850, 13.0226, 23.1660
Hunter-Lab	86.3558, 19.0696, -11.4098

Details

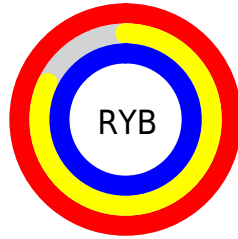
The XYZ color **82.3366, 74.5732, 104.6622** is a light color, and the websafe version is hex **FFCCFF**. A complement of this color would be **73.9736, 89.8759, 74.4255**, and the grayscale version is **74.0739, 77.9315, 84.8674**.

A 20% lighter version of the original color is **95.0500, 100.0000, 108.9000**, and **45.2031, 39.5257, 58.6728** is the 20% darker color. If you saturate the color by 10%, you get **76.5357, 62.9715, 102.7286**, and if you desaturate by 10%, it is **89.1433, 88.1867, 106.9311**.

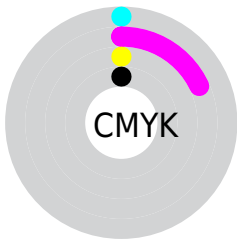
Distribution



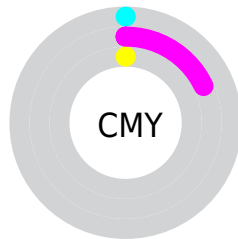
- Red (100%)
- Green (82%)
- Blue (100%)



- Red (100%)
- Yellow (82%)
- Blue (100%)



- Cyan (0%)
- Magenta (18%)
- Yellow (0%)
- Black (0%)



- Cyan (0%)
- Magenta (18%)
- Yellow (0%)

Brightness & Saturation Gradients

These gradients show how the XYZ color 82.3366, 74.5732, 104.6622 changes by changing the brightness by 10 percent. The first figure shows a shift by +10% for each color and the second figure -10%.

Similar to the brightness gradients but the following saturation gradients show a change of the XYZ color 82.3366, 74.5732, 104.6622 by changing the saturation by 10% instead.

82.3366, 74.5732,
104.6622

82.3366, 74.5732,
104.6622

491.3904,
476.4493, 596.4128

61.9581, 55.2633,
79.5613

135.5793,
125.7080, 169.6570

45.2543, 39.6126,
58.8334

169.1742,
158.3017, 210.3881

31.8599, 27.2366,
42.0599

207.9052,
196.0922, 257.1662

21.4095, 17.7510,
28.8223

252.1378,
239.4638, 310.4100

13.5379, 10.7714,
18.7020

302.2372,
288.8009, 370.5381

7.8795, 5.9133,
11.2805

358.5689,

4.0691, 2.7924,

344.4879, 437.9688

6.1393

421.4982,
406.9093, 513.1209

■ 1.7413, 1.0244,
2.8598

■ 0.4819, 0.0000,
1.0235

■ 82.3366, 74.5732,
104.6622

■ 82.3366, 74.5732,
104.6622

■ 76.5357, 62.9715,
102.7286

■ 89.1433, 88.1867,
106.9311

■ 71.6891, 53.2783,
101.1130

95.0500, 100.0000,
108.9000

■ 67.7469, 45.3939,
99.7990

■ 64.6532, 39.2063,
98.7677

■ 62.3456, 34.5912,
97.9985

■ 60.7534, 31.4068,
97.4678

■ 59.7933, 29.4866,
97.1478

■ 59.3552, 28.6104,
97.0017

■ 59.2900, 28.4800,
96.9800

Harmonies

Analogous

The Analogous color harmony consists of three colors that are next to each other on the color wheel.



76.7080, 74.5732, 120.4519



82.3366, 74.5732, 104.6622



84.9003, 74.5732, 84.2694

Triad

The Triadic color harmony groups three colors that are evenly spaced from another and form a triangle on the color wheel.



82.3366, 74.5732, 104.6622



71.9442, 74.5732, 48.9856



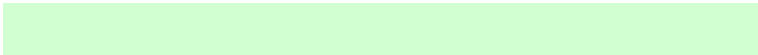
59.5893, 74.5732, 98.5608

Complementary

The Complementary color scheme is a pair of colors which are on the opposite of each other on the color wheel.



82.3366, 74.5732, 104.6622



73.9736, 89.8759, 74.4255

Split Complementary

Split-complementary colors differ from the complementary color scheme. The scheme consists of three colors, the original color and two neighbors of the complement color.



58.4943, 74.5732, 78.2012



82.3366, 74.5732, 104.6622



65.3541, 74.5732, 51.5586

Square

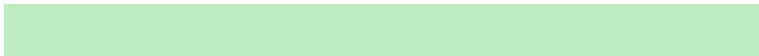
The Square scheme is like the rectangle color scheme, but the four colors are evenly spaced on the color wheel.



82.3366, 74.5732, 104.6622



78.6585, 74.5732, 53.8326



60.5380, 74.5732, 61.5315



63.6313, 74.5732, 116.5485

Rectangle

The Rectangle color scheme consists of four colors that form a rectangle on the color wheel.



82.3366, 74.5732, 104.6622



84.4130, 74.5732, 71.5426



60.5380, 74.5732, 61.5315



58.8760, 74.5732, 91.6842

Sweetspot

The Sweet Spot groups the original color and five complimentary colors.



82.3380, 74.5760, 104.6627



91.1166, 92.1332, 107.5889



67.6780, 67.0185, 103.9766



19.3889, 19.4928, 22.9905



0.0000, 0.0000, 0.0000



20.3446, 21.4041, 23.3091

Same Dimension

The Same Dimension uses a secret algorithm to generate beautiful new colors.



82.3380, 74.5760, 104.6627



80.2817, 70.4634, 103.9772



78.9251, 73.2109, 86.6903



18.7928, 18.3004, 22.7918



30.9803, 14.8814, 50.6741



3.0164, 1.4490, 4.9340

Inverse Universe

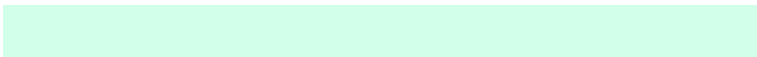
The Inverse Universe completely reimagines the original color for something new.



82.3380, 74.5760, 104.6627



80.2817, 70.4634, 103.9772



76.9770, 91.0773, 90.2415



18.7928, 18.3004, 22.7918



30.9803, 14.8814, 50.6741



3.0164, 1.4490, 4.9340

Previews

White Background



This preview shows how the XYZ color 82.3366, 74.5732, 104.6622 looks on a white background.

Color Contrast Check

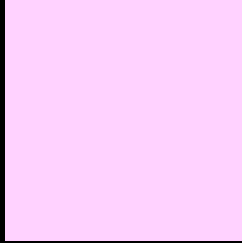
Large Text (above 18pt) WCAG AA × Fail

Any Text WCAG AA × Fail

Large Text (above 18pt) WCAG AAA × Fail

Any Text WCAG AAA × Fail

Black Background



This preview shows how the XYZ color 82.3366, 74.5732, 104.6622 looks on a black background.

Color Contrast Check

Large Text (above 18pt) WCAG AA ✓ Pass

Any Text WCAG AA ✓ Pass

Large Text (above 18pt) WCAG AAA ✓ Pass

Any Text WCAG AAA ✓ Pass

If you want to check with other color combinations, try the [Color Contrast Checker](#).

XYZ 82.3366, 74.5732, 104.6622

Background



This preview shows how black text looks on a background with the XYZ color 82.3366, 74.5732, 104.6622.



This preview shows how white text looks on a background with the XYZ color 82.3366, 74.5732,

104.6622.

Color Blindness Simulation

Color vision deficiency is a very complex topic, and I could not describe the different causes any better than Wikipedia does, so if you want to learn more, you should check out their [article about color blindness](#).

Dichromacy



Original Color

82.3366, 74.5732, 104.6622

Protanopia

73.3511, 74.9008, 105.1990

Deuteranopia

76.0797, 74.3905, 103.2775



Tritanopia

78.6153, 74.5581, 85.8490

Trichromacy



Original Color

82.3366, 74.5732, 104.6622



Protanomaly

76.0764, 74.3517, 104.9494



Deuteranomaly

78.1250, 74.2819, 103.9861



Tritanomaly

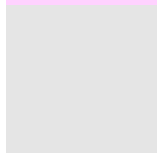
80.0304, 74.7624, 92.6506

Monochromacy



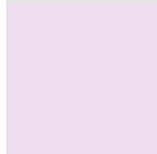
Original Color

82.3366, 74.5732, 104.6622



Achromatopsia

74.4753, 78.3538, 85.3273



Achromatomaly

76.8138, 76.5927, 91.6243

CSS Examples

Text

The CSS property to change the color of the text to XYZ 82.3366, 74.5732, 104.6622 is called "color". The color property can be set on classes, ids or directly on the HTML element.

This example shows how text in the color `rgb(255, 210, 255)` looks like.

```
.text, #text, p{  
    color:rgb(255, 210, 255)  
}
```

If you want to add a text shadow in that color use the text-shadow property, you can generate a text shadow directly with our [CSS Text Shadow Generator](#).

Here you see how black text with a 4 pixel rgb(255, 210, 255) colored shadow looks like.

```
.shadow{ text-shadow: 4px 4px 2px rgb(255, 210, 255) }
```

Border

The CSS property to change the border of an element to XYZ 82.3366, 74.5732, 104.6622 is called "border". The border property can be set on classes, ids or directly on the HTML element.

This example shows the color as border, it can be applied via the CSS property "border" or "border-color".

```
.border, #border, table{ border:4px solid rgb(255, 210, 255) }
```


If only the border color should be changed use the property `border-color`.

```
.border{ border-color:rgb(255, 210, 255) }
```

If you want to add a box shadow in that color use:

Here you see how a box with a 4 pixel `rgb(255, 210, 255)` colored shadow looks like.

```
.boxshadow{ -moz-box-shadow:4px 4px 4px  
4px rgb(255, 210, 255); -webkit-box-  
shadow:4px 4px 4px 4px rgb(255, 210, 255);  
box-shadow:4px 4px 4px 4px rgb(255, 210,  
255) }
```

Background

The CSS property to change the background color of an element to XYZ 82.3366, 74.5732, 104.6622 is called "background". The background property can be set on classes, ids or directly on the HTML element.

```
.background, #background, body{  
background: rgb(255, 210, 255) }
```

If only the background color should be changed can be used:

```
.background{ background-color: rgb(255,  
210, 255) }
```

This example shows the color as background, it is applied via the CSS property "background".

To optimize and compress your CSS code, you can use our [online CSS compressor and optimizer](#) based on csstidy. If you want to create a linear or radial gradient as background or border, check our [CSS Gradient Generator](#).

Hey! You found this booklet interesting? Support Converting Colors with the new Membership Option!

The pro membership hides all ads, plus gives you double the colors in the color bucket, and more awesome pro features!

[Learn more, Memberships starting at \\$2.50/m!](#)

**Follow me
on Twitter!**

@ConvertingColor