

Converting Colors

XYZ(143.3861, 100.0000,
174.7960)

Have a look what the booklet for
XYZ(143.3861, 100.0000, 174.7960)
contains.

XYZ(79.2563, 68.4125, 103.6354)	3
<i>Conversions</i>	4
<i>Details</i>	6
<i>Harmonies</i>	12
<i>Previews</i>	24
<i>Color Blindness Simulation</i>	28
<i>CSS Examples</i>	31

Color

**XYZ(79.2563, 68.4125,
103.6354)**

Conversions

Conversions Part 1

Format	Color
Hex	FFC5FF
RGB	255, 197, 255
RGB Percent	100%, 77%, 100%
CMY	0.0000, 0.2274, 0.0000
CMYK	0.00, 0.23, 0.00, 0.00
HSL	300°, 100%, 89%
HSV	300°, 23%, 100%
XYZ	79.2563, 68.4125, 103.6354
YIQ	220.9540, 15.9500, 30.3340

Conversions

Conversions Part 2

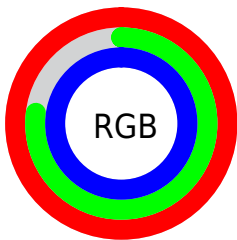
Format	Color
R _Y B	255, 197, 255
Decimal	16762367
CIE _{Lab}	86.21, 30.05, -20.51
CIE _{LCh}	86, 36.378, 325.689
Y _{xy}	68.4125, 0.3154, 0.2722
Android (android.graphics.Color)	4294952447 (0xFFFFC5FF)
YUV	220.9540, 16.7847, 29.8583
Hunter-Lab	82.7118, 26.2969, -16.3902

Details

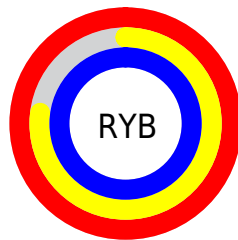
The XYZ color **79.2563, 68.4125, 103.6354** is a light color, and the websafe version is hex **FFCCFF**. A complement of this color would be **68.8661, 87.4226, 66.0713**, and the grayscale version is **68.5744, 72.1456, 78.5666**.

A 20% lighter version of the original color is **94.7318, 99.3636, 108.7939**, and **43.3042, 35.7279, 58.0399** is the 20% darker color. If you saturate the color by 10%, you get **73.9486, 57.7972, 101.8662**, and if you desaturate by 10%, it is **85.5458, 80.9916, 105.7319**.

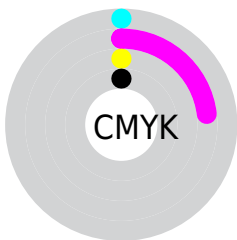
Distribution



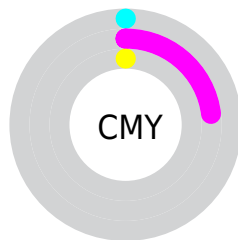
- Red (100%)
- Green (77%)
- Blue (100%)



- Red (100%)
- Yellow (77%)
- Blue (100%)



- Cyan (0%)
- Magenta (23%)
- Yellow (0%)
- Black (0%)



- Cyan (0%)
- Magenta (23%)
- Yellow (0%)

Brightness & Saturation Gradients

These gradients show how the XYZ color 79.2563, 68.4125, 103.6354 changes by changing the brightness by 10 percent. The first figure shows a shift by +10% for each color and the second figure -10%.

Similar to the brightness gradients but the following saturation gradients show a change of the XYZ color 79.2563, 68.4125, 103.6354 by changing the saturation by 10% instead.

79.2563, 68.4125,
103.6354

79.2563, 68.4125,
103.6354

481.1978,
454.9561, 593.1322

59.4129, 50.2334,
78.7063

131.2756,
116.9421, 168.2394

43.1933, 35.5989,
58.1345

164.1823,
148.0613, 208.7515

30.2320, 24.1246,
41.5014

202.1741,
184.2627, 255.2949

20.1637, 15.4260,
28.3884

245.6164,
225.9307, 308.2883

12.6230, 9.1189,
18.3771

294.8746,
273.4496, 368.1502

7.2447, 4.8188,
11.0488

350.3140,

3.6633, 2.1414,

327.2039, 435.2991

5.9851

412.2999,
387.5780, 510.1536

■ 1.5135, 0.6877,
2.7674

■ 0.3350, 0.0000,
0.9771

■ 79.2563, 68.4125,
103.6354

■ 79.2563, 68.4125,
103.6354

■ 73.9486, 57.7972,
101.8662

■ 85.5458, 80.9916,
105.7319

■ 69.5698, 49.0395,
100.4066

■ 92.8591, 95.6183,
108.1697

■ 66.0674, 42.0349,
99.2391

95.0500, 100.0000,
108.9000

■ 63.3827, 36.6654,
98.3442

■ 61.4494, 32.7987,
97.6998

■ 60.1909, 30.2818,
97.2803

■ 59.5146, 28.9292,
97.0549

■ 59.2900, 28.4800,
96.9800

Harmonies

Analogous

The Analogous color harmony consists of three colors that are next to each other on the color wheel.



72.2590, 68.4125, 124.2724



79.2563, 68.4125, 103.6354



82.4443, 68.4125, 78.0115

Triad

The Triadic color harmony groups three colors that are evenly spaced from another and form a triangle on the color wheel.



79.2563, 68.4125, 103.6354



66.2424, 68.4125, 37.3094



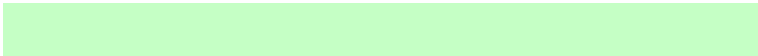
51.5622, 68.4125, 96.3285

Complementary

The Complementary color scheme is a pair of colors which are on the opposite of each other on the color wheel.



79.2563, 68.4125, 103.6354



68.8661, 87.4226, 66.0713

Split Complementary

Split-complementary colors differ from the complementary color scheme. The scheme consists of three colors, the original color and two neighbors of the complement color.



50.2486, 68.4125, 71.0753



79.2563, 68.4125, 103.6354



58.2888, 68.4125, 40.1728

Square

The Square scheme is like the rectangle color scheme, but the four colors are evenly spaced on the color wheel.



79.2563, 68.4125, 103.6354



74.5326, 68.4125, 42.5146



52.6065, 68.4125, 51.3951



56.3606, 68.4125, 119.4579

Rectangle

The Rectangle color scheme consists of four colors that form a rectangle on the color wheel.



79.2563, 68.4125, 103.6354



81.7965, 68.4125, 62.6990



52.6065, 68.4125, 51.3951



50.7170, 68.4125, 87.6727

Sweetspot

The Sweet Spot groups the original color and five complimentary colors.



79.2575, 68.4151, 103.6358



89.6176, 89.1353, 107.0892



61.0450, 59.0261, 102.7835



19.0868, 18.8885, 22.8898



0.0000, 0.0000, 0.0000



20.3446, 21.4041, 23.3091

Same Dimension

The Same Dimension uses a secret algorithm to generate beautiful new colors.



79.2575, 68.4151, 103.6358



76.8805, 63.6610, 102.8435



74.9354, 66.6862, 80.8757



18.7928, 18.3004, 22.7918



30.9803, 14.8814, 50.6741



3.0164, 1.4490, 4.9340

Inverse Universe

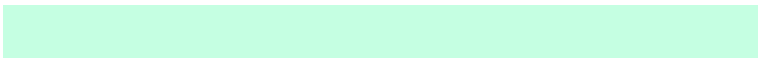
The Inverse Universe completely reimagines the original color for something new.



79.2575, 68.4151, 103.6358



76.8805, 63.6610, 102.8435



72.5153, 88.8822, 85.2876



18.7928, 18.3004, 22.7918



30.9803, 14.8814, 50.6741



3.0164, 1.4490, 4.9340

Previews

White Background



This preview shows how the XYZ color 79.2563, 68.4125, 103.6354 looks on a white background.

Color Contrast Check

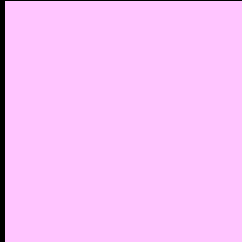
Large Text (above 18pt) WCAG AA × Fail

Any Text WCAG AA × Fail

Large Text (above 18pt) WCAG AAA × Fail

Any Text WCAG AAA × Fail

Black Background



This preview shows how the XYZ color 79.2563, 68.4125, 103.6354 looks on a black background.

Color Contrast Check

Large Text (above 18pt) WCAG AA ✓ Pass

Any Text WCAG AA ✓ Pass

Large Text (above 18pt) WCAG AAA ✓ Pass

Any Text WCAG AAA ✓ Pass

If you want to check with other color combinations, try the [Color Contrast Checker](#).

XYZ 79.2563, 68.4125, 103.6354

Background



This preview shows how black text looks on a background with the XYZ color 79.2563, 68.4125, 103.6354.

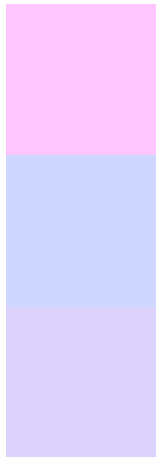


This preview shows how white text looks on a background with the XYZ color 79.2563, 68.4125,

Color Blindness Simulation

Color vision deficiency is a very complex topic, and I could not describe the different causes any better than Wikipedia does, so if you want to learn more, you should check out their [article about color blindness](#).

Dichromacy



Original Color

79.2563, 68.4125, 103.6354

Protanopia

67.8287, 68.5785, 104.2698

Deuteranopia

70.0784, 68.6769, 101.6579



Tritanopia

73.5665, 68.1503, 76.2948

Trichromacy



Original Color

79.2563, 68.4125, 103.6354



Protanomaly

71.3463, 68.1790, 104.0073



Deuteranomaly

73.0796, 68.3903, 102.2774



Tritanomaly

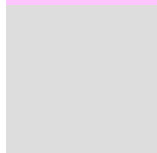
75.5970, 68.2949, 85.5418

Monochromacy



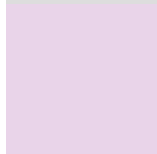
Original Color

79.2563, 68.4125, 103.6354



Achromatopsia

68.7264, 72.3055, 78.7407



Achromatomaly

71.8557, 70.2938, 86.8716

CSS Examples

Text

The CSS property to change the color of the text to XYZ 79.2563, 68.4125, 103.6354 is called "color". The color property can be set on classes, ids or directly on the HTML element.

This example shows how text in the color `rgb(255, 197, 255)` looks like.

```
.text, #text, p{  
    color:rgb(255, 197, 255)  
}
```

If you want to add a text shadow in that color use the text-shadow property, you can generate a text shadow directly with our [CSS Text Shadow Generator](#).

Here you see how black text with a 4 pixel rgb(255, 197, 255) colored shadow looks like.

```
.shadow{ text-shadow: 4px 4px 2px rgb(255, 197, 255) }
```

Border

The CSS property to change the border of an element to XYZ 79.2563, 68.4125, 103.6354 is called "border". The border property can be set on classes, ids or directly on the HTML element.

This example shows the color as border, it can be applied via the CSS property "border" or "border-color".

```
.border, #border, table{ border:4px solid rgb(255, 197, 255) }
```


If only the border color should be changed use the property `border-color`.

```
.border{ border-color:rgb(255, 197, 255) }
```

If you want to add a box shadow in that color use:

Here you see how a box with a 4 pixel `rgb(255, 197, 255)` colored shadow looks like.

```
.boxshadow{ -moz-box-shadow:4px 4px 4px  
4px rgb(255, 197, 255); -webkit-box-  
shadow:4px 4px 4px 4px rgb(255, 197, 255);  
box-shadow:4px 4px 4px 4px rgb(255, 197,  
255) }
```

Background

The CSS property to change the background color of an element to XYZ 79.2563, 68.4125, 103.6354 is called "background". The background property can be set on classes, ids or directly on the HTML element.

```
.background, #background, body{  
background: rgb(255, 197, 255) }
```

If only the background color should be changed can be used:

```
.background{ background-color: rgb(255,  
197, 255) }
```

This example shows the color as background, it is applied via the CSS property "background".

To optimize and compress your CSS code, you can use our [online CSS compressor and optimizer](#) based on csstidy. If you want to create a linear or radial gradient as background or border, check our [CSS Gradient Generator](#).

Hey! You found this booklet interesting? Support Converting Colors with the new Membership Option!

The pro membership hides all ads, plus gives you double the colors in the color bucket, and more awesome pro features!

[Learn more, Memberships starting at \\$2.50/m!](#)

**Follow me
on Twitter!**

@ConvertingColor