

# Converting Colors

XYZ(149.7542, 100.0000,  
178.2041)

Have a look what the booklet for  
XYZ(149.7542, 100.0000, 178.2041)  
contains.

<b>XYZ(77.0603, 64.0206, 102.9034)</b> .....	3
<b><i>Conversions</i></b> .....	4
<b><i>Details</i></b> .....	6
<b><i>Harmonies</i></b> .....	12
<b><i>Previews</i></b> .....	24
<b><i>Color Blindness Simulation</i></b> .....	28
<b><i>CSS Examples</i></b> .....	31

# Color

**XYZ(77.0603, 64.0206,  
102.9034)**

# Conversions

## Conversions Part 1

Format	Color
Hex	FFBBFF
RGB	255, 187, 255
RGB Percent	100%, 73%, 100%
CMY	0.0000, 0.2666, 0.0000
CMYK	0.00, 0.27, 0.00, 0.00
HSL	300°, 100%, 87%
HSV	300°, 27%, 100%
XYZ	77.0603, 64.0206, 102.9034
YIQ	215.0840, 18.7000, 35.5640

# Conversions

## Conversions Part 2

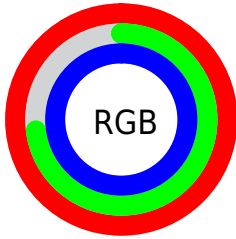
<b>Format</b>	<b>Color</b>
R <sub>Y</sub> B	255, 187, 255
Decimal	16759807
CIE <sub>Lab</sub>	83.98, 35.30, -23.90
CIE <sub>LCh</sub>	84, 42.626, 325.902
Y <sub>xy</sub>	64.0206, 0.3158, 0.2624
Android (android.graphics.Color)	4294949887 (0xFFFFBBFF)
YUV	215.0840, 19.6786, 35.0063
Hunter-Lab	80.0129, 31.8906, -20.2430

# Details

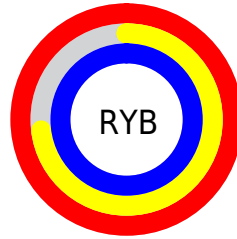
The XYZ color **77.0603, 64.0206, 102.9034** is a light color, and the websafe version is hex **FFCCFF**. A complement of this color would be **65.2251, 85.6736, 60.1158**, and the grayscale version is **64.5115, 67.8712, 73.9117**.

A 20% lighter version of the original color is **91.6407, 93.1814, 107.7636**, and **41.6065, 32.7226, 57.5493** is the 20% darker color. If you saturate the color by 10%, you get **72.1234, 54.1468, 101.2578**, and if you desaturate by 10%, it is **82.9601, 75.8201, 104.8700**.

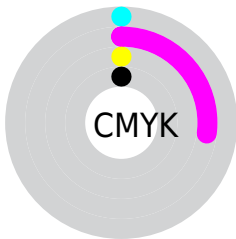
# Distribution



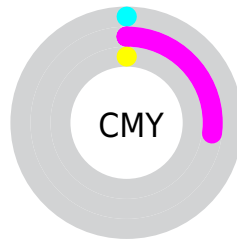
- Red (100%)
- Green (73%)
- Blue (100%)



- Red (100%)
- Yellow (73%)
- Blue (100%)



- Cyan (0%)
- Magenta (27%)
- Yellow (0%)
- Black (0%)



- Cyan (0%)
- Magenta (27%)
- Yellow (0%)

# Brightness & Saturation Gradients

These gradients show how the XYZ color 77.0603, 64.0206, 102.9034 changes by changing the brightness by 10 percent. The first figure shows a shift by +10% for each color and the second figure -10%.

Similar to the brightness gradients but the following saturation gradients show a change of the XYZ color 77.0603, 64.0206, 102.9034 by changing the saturation by 10% instead.



77.0603, 64.0206,  
102.9034

77.0603, 64.0206,  
102.9034

473.8584,  
439.2640, 590.7877

57.6025, 46.6674,  
78.0971

128.1970,  
110.6406, 167.2280

41.7312, 32.7728,  
57.6369

160.6066,  
140.6762, 207.5834

29.0810, 21.9524,  
41.1040

198.0641,  
175.7079, 253.9590

19.2867, 13.8219,  
28.0801

240.9349,  
216.1203, 306.7732

11.9829, 7.9969,  
18.1464

289.5844,  
262.2977, 366.4446

6.8041, 4.0930,  
10.8847

344.3779,

3.3851, 1.7257,

314.6246, 433.3918

5.8761

405.6808,  
373.4852, 508.0333

■ 1.3606, 0.4402,  
2.7023

■ 0.2279, 0.0000,  
0.9446

■ 77.0603, 64.0206,  
102.9034

■ 77.0603, 64.0206,  
102.9034

■ 72.1234, 54.1468,  
101.2578

■ 82.9601, 75.8201,  
104.8700

■ 68.0949, 46.0899,  
99.9150

■ 89.8662, 89.6323,  
107.1721

■ 64.9206, 39.7413,  
98.8569

95.0500, 100.0000,  
108.9000

■ 62.5389, 34.9779,  
98.0630

■ 60.8801, 31.6602,  
97.5100

■ 59.8622, 29.6244,  
97.1707

■ 59.3823, 28.6646,  
97.0108

■ 59.2900, 28.4800,  
96.9800

# Harmonies

## Analogous

The Analogous color harmony consists of three colors that are next to each other on the color wheel.



69.0832, 64.0206, 127.3409



77.0603, 64.0206, 102.9034



80.6957, 64.0206, 73.4689

# Triad

The Triadic color harmony groups three colors that are evenly spaced from another and form a triangle on the color wheel.



77.0603, 64.0206, 102.9034



62.1492, 64.0206, 29.8031



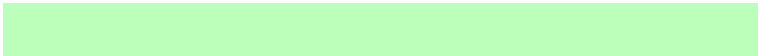
46.0092, 64.0206, 94.8257

# Complementary

The Complementary color scheme is a pair of colors which are on the opposite of each other on the color wheel.



77.0603, 64.0206, 102.9034



65.2251, 85.6736, 60.1158

# Split Complementary

Split-complementary colors differ from the complementary color scheme. The scheme consists of three colors, the original color and two neighbors of the complement color.



44.5576, 64.0206, 66.0769



77.0603, 64.0206, 102.9034



53.2978, 64.0206, 32.7697

# Square

The Square scheme is like the rectangle color scheme, but the four colors are evenly spaced on the color wheel.



77.0603, 64.0206, 102.9034



71.5442, 64.0206, 35.0552



47.0885, 64.0206, 44.5499



51.2778, 64.0206, 121.8978



# Rectangle

The Rectangle color scheme consists of four colors that form a rectangle on the color wheel.



77.0603, 64.0206, 102.9034



79.9198, 64.0206, 56.4769



47.0885, 64.0206, 44.5499



45.0835, 64.0206, 84.8583

# Sweetspot

The Sweet Spot groups the original color and five complimentary colors.



77.0615, 64.0230, 102.9038



88.8839, 87.6679, 106.8446



56.3164, 53.3285, 101.9330



18.7928, 18.3004, 22.7918



0.0000, 0.0000, 0.0000



20.3446, 21.4041, 23.3091



# Same Dimension

The Same Dimension uses a secret algorithm to generate beautiful new colors.



77.0615, 64.0230, 102.9038



74.3104, 58.5208, 101.9868



72.0630, 62.0236, 76.5822



18.7928, 18.3004, 22.7918



30.9803, 14.8814, 50.6741



3.0164, 1.4490, 4.9340



# Inverse Universe

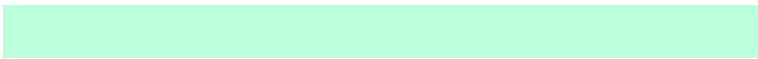
The Inverse Universe completely reimagines the original color for something new.



77.0615, 64.0230, 102.9038



74.3104, 58.5208, 101.9868



69.3064, 87.3061, 81.6075



18.7928, 18.3004, 22.7918



30.9803, 14.8814, 50.6741



3.0164, 1.4490, 4.9340



# Previews

## White Background



This preview shows how the XYZ color 77.0603, 64.0206, 102.9034 looks on a white background.

## Color Contrast Check

Large Text (above 18pt) WCAG AA × Fail

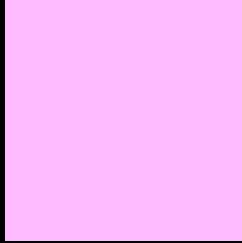
Any Text WCAG AA × Fail

Large Text (above 18pt) WCAG AAA × Fail

Any Text WCAG AAA × Fail



# Black Background



This preview shows how the XYZ color 77.0603, 64.0206, 102.9034 looks on a black background.

## Color Contrast Check

Large Text (above 18pt) WCAG AA ✓ Pass

Any Text WCAG AA ✓ Pass

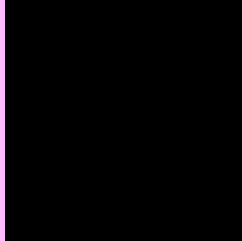
Large Text (above 18pt) WCAG AAA ✓ Pass

Any Text WCAG AAA ✓ Pass

If you want to check with other color combinations, try the [Color Contrast Checker](#).

# XYZ 77.0603, 64.0206, 102.9034

## Background



This preview shows how black text looks on a background with the XYZ color 77.0603, 64.0206, 102.9034.



This preview shows how white text looks on a background with the XYZ color 77.0603, 64.0206,



# Color Blindness Simulation

Color vision deficiency is a very complex topic, and I could not describe the different causes any better than Wikipedia does, so if you want to learn more, you should check out their [article about color blindness](#).

## Dichromacy



### Original Color

77.0603, 64.0206, 102.9034

### Protanopia

63.8946, 64.3375, 103.6585

### Deuteranopia

65.6965, 64.2462, 101.0336



## Tritanopia

70.2149, 63.8231, 69.5911

# Trichromacy



## Original Color

77.0603, 64.0206, 102.9034



## Protanomaly

67.9177, 63.5886, 103.3019



## Deuteranomaly

69.2877, 63.6488, 101.5621



## Tritanomaly

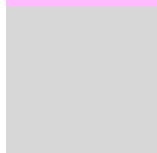
72.3608, 63.6995, 80.4329

# Monochromacy



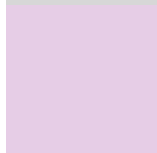
## Original Color

77.0603, 64.0206, 102.9034



## Achromatopsia

64.5905, 67.9542, 74.0022



## Achromatomaly

68.7474, 66.1988, 84.0172

# CSS Examples

## Text

The CSS property to change the color of the text to XYZ 77.0603, 64.0206, 102.9034 is called "color". The color property can be set on classes, ids or directly on the HTML element.

This example shows how text in the color `rgb(255, 187, 255)` looks like.

```
.text, #text, p{  
    color:rgb(255, 187, 255)  
}
```

If you want to add a text shadow in that color use the text-shadow property, you can generate a text shadow directly with our [CSS Text Shadow Generator](#).

Here you see how black text with a 4 pixel rgb(255, 187, 255) colored shadow looks like.

```
.shadow{ text-shadow: 4px 4px 2px rgb(255, 187, 255) }
```

## Border

The CSS property to change the border of an element to XYZ 77.0603, 64.0206, 102.9034 is called "border". The border property can be set on classes, ids or directly on the HTML element.

This example shows the color as border, it can be applied via the CSS property "border" or "border-color".

```
.border, #border, table{ border:4px solid rgb(255, 187, 255) }
```



If only the border color should be changed use the property `border-color`.

```
.border{ border-color:rgb(255, 187, 255) }
```

If you want to add a box shadow in that color use:

Here you see how a box with a 4 pixel `rgb(255, 187, 255)` colored shadow looks like.

```
.boxshadow{ -moz-box-shadow:4px 4px 4px  
4px rgb(255, 187, 255); -webkit-box-  
shadow:4px 4px 4px 4px rgb(255, 187, 255);  
box-shadow:4px 4px 4px 4px rgb(255, 187,  
255) }
```

# Background

The CSS property to change the background color of an element to XYZ 77.0603, 64.0206, 102.9034 is called "background". The background property can be set on classes, ids or directly on the HTML element.

```
.background, #background, body{  
background: rgb(255, 187, 255) }
```

If only the background color should be changed can be used:

```
.background{ background-color: rgb(255,  
187, 255) }
```

This example shows the color as background, it is applied via the CSS property "background".

To optimize and compress your CSS code, you can use our [online CSS compressor and optimizer](#) based on csstidy. If you want to create a linear or radial gradient as background or border, check our [CSS Gradient Generator](#).

Hey! You found this booklet interesting? Support Converting Colors with the new Membership Option!

The pro membership hides all ads, plus gives you double the colors in the color bucket, and more awesome pro features!

**[Learn more, Memberships starting at \\$2.50/m!](#)**

**Follow me  
on Twitter!**

@ConvertingColor