

Converting Colors

XYZ(15.1754, 13.4359, 12.7738)

Have a look what the booklet for
XYZ(15.1754, 13.4359, 12.7738)
contains.

XYZ(15.2316, 13.4191, 12.8537)	3
<i>Conversions</i>	4
<i>Details</i>	6
<i>Harmonies</i>	12
<i>Previews</i>	24
<i>Color Blindness Simulation</i>	28
<i>CSS Examples</i>	31

Color

**XYZ(15.2316, 13.4191,
12.8537)**

Conversions

Conversions Part 1

Format	Color
Hex	825D60
RGB	130, 93, 96
RGB Percent	51%, 36%, 38%
CMY	0.4902, 0.6353, 0.6235
CMYK	0.00, 0.28, 0.26, 0.49
HSL	355°, 17%, 44%
HSV	355°, 28%, 51%
XYZ	15.2316, 13.4191, 12.8537
YIQ	104.4050, 21.0890, 8.7770

Conversions

Conversions Part 2

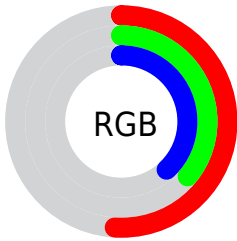
Format	Color
R_{YB}	130, 93, 96
Decimal	8543584
CIE _{Lab}	43.39, 15.60, 4.28
CIE _{LCh}	43, 16.179, 15.347
Yxy	13.4191, 0.3670, 0.3233
Android (android.graphics.Color)	4286733664 (0xFF825D60)
YUV	104.4050, -4.1437, 22.4468
Hunter-Lab	36.6321, 10.1140, 4.8384

Details

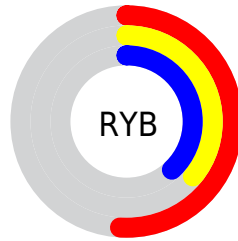
The XYZ color **15.2316, 13.4191, 12.8537** is a dark color, and the websafe version is hex **996666**. A complement of this color would be **16.3282, 19.8250, 23.0457**, and the grayscale version is **13.2739, 13.9652, 15.2081**.

A 20% lighter version of the original color is **34.9287, 32.2122, 31.5708**, and **4.9005, 3.9688, 3.5254** is the 20% darker color. If you saturate the color by 10%, you get **13.6772, 11.1246, 9.8250**, and if you desaturate by 10%, it is **17.0643, 16.1363, 16.3880**.

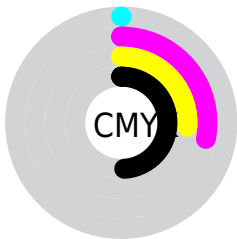
Distribution



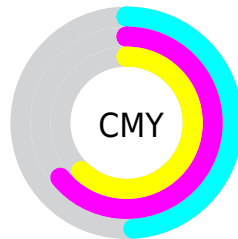
- Red (51%)
- Green (36%)
- Blue (38%)



- Red (51%)
- Yellow (36%)
- Blue (38%)



- Cyan (0%)
- Magenta (28%)
- Yellow (26%)
- Black (49%)



- Cyan (49%)
- Magenta (64%)
- Yellow (62%)

Brightness & Saturation Gradients

These gradients show how the XYZ color 15.2316, 13.4191, 12.8537 changes by changing the brightness by 10 percent. The first figure shows a shift by +10% for each color and the second figure -10%.

Similar to the brightness gradients but the following saturation gradients show a change of the XYZ color 15.2316, 13.4191, 12.8537 by changing the saturation by 10% instead.

■ 15.2316, 13.4191,
12.8537

■ 15.2316, 13.4191,
12.8537

218.1245,
213.5864, 221.1527

■ 9.0695, 7.7178,
7.1983

■ 34.8273, 32.0547,
31.7280

■ 4.8440, 3.9149,
3.5061

■ 48.9916, 45.7577,
45.7841

■ 2.1898, 1.6261,
1.3585

■ 66.5539, 62.8968,
63.4774

■ 0.7374, 0.3751,
0.1090

■ 87.8797, 83.8563,
85.2266

■ 0.0000, 0.0000,
0.0000

113.3343,
109.0206, 111.4502

143.2831,

138.7742, 142.5667

178.0913,
173.5013, 178.9947

■ 15.2316, 13.4191,
12.8537

■ 15.2316, 13.4191,
12.8537

■ 13.6772, 11.1246,
9.8250

■ 17.0643, 16.1363,
16.3880

■ 12.3865, 9.2299,
7.2779

■ 19.1870, 19.2939,
20.4486

■ 11.3451, 7.7124,
5.1879

■ 21.6117, 22.9110,
25.0561

■ 10.5369, 6.5471,
3.5278

■ 24.3498, 27.0049,
30.2299

■ 9.9438, 5.7055,
2.2677

■ 27.4118, 31.5922,
35.9882

■ 9.5450, 5.1549,
1.3736

■ 30.8078, 36.6884,
42.3485

■ 9.2963, 4.8168,
0.7997

■ 34.5477, 42.3086,
49.3276

■ 9.2637, 4.7689,
0.7348

■ 38.6405, 48.4670,
56.9416

■ 43.0954, 55.1776,
65.2060

Harmonies

Analogous

The Analogous color harmony consists of three colors that are next to each other on the color wheel.



15.2401, 13.4191, 16.4342



15.2316, 13.4191, 12.8537



14.5307, 13.4191, 10.2172

Triad

The Triadic color harmony groups three colors that are evenly spaced from another and form a triangle on the color wheel.



15.2316, 13.4191, 12.8537



11.1103, 13.4191, 10.2640



12.1524, 13.4191, 22.3883

Complementary

The Complementary color scheme is a pair of colors which are on the opposite of each other on the color wheel.



15.2316, 13.4191, 12.8537



16.3282, 19.8250, 23.0457

Split Complementary

Split-complementary colors differ from the complementary color scheme. The scheme consists of three colors, the original color and two neighbors of the complement color.



11.1292, 13.4191, 20.1126



15.2316, 13.4191, 12.8537



10.5549, 13.4191, 12.9281

Square

The Square scheme is like the rectangle color scheme, but the four colors are evenly spaced on the color wheel.



15.2316, 13.4191, 12.8537



12.1251, 13.4191, 8.8981



10.5616, 13.4191, 16.5218



13.4052, 13.4191, 22.3595

Rectangle

The Rectangle color scheme consists of four colors that form a rectangle on the color wheel.



15.2316, 13.4191, 12.8537



13.7900, 13.4191, 9.1771



10.5616, 13.4191, 16.5218



11.7720, 13.4191, 21.8530

Sweetspot

The Sweet Spot groups the original color and five complimentary colors.



15.2320, 13.4197, 12.8540



33.4931, 33.5362, 35.4459



16.6840, 13.9467, 22.9318



7.4706, 7.4263, 7.8123



62.3462, 65.5931, 71.4309



8.4577, 8.8982, 9.6901

Same Dimension

The Same Dimension uses a secret algorithm to generate beautiful new colors.



15.2320, 13.4197, 12.8540



25.0411, 20.9980, 19.1690



16.5887, 16.3499, 12.6383



4.3408, 4.3495, 4.5993



8.8836, 4.5732, 0.7111



0.0000, 0.0000, 0.0000

Inverse Universe

The Inverse Universe completely reimagines the original color for something new.



15.2320, 13.4197, 12.8540



25.0411, 20.9980, 19.1690



14.6274, 16.1061, 23.4570



4.3408, 4.3495, 4.5993



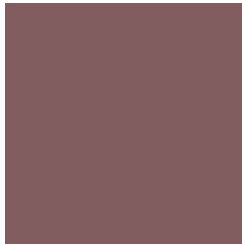
8.8836, 4.5732, 0.7111



0.0000, 0.0000, 0.0000

Previews

White Background



This preview shows how the XYZ color 15.2316, 13.4191, 12.8537 looks on a white background.

Color Contrast Check

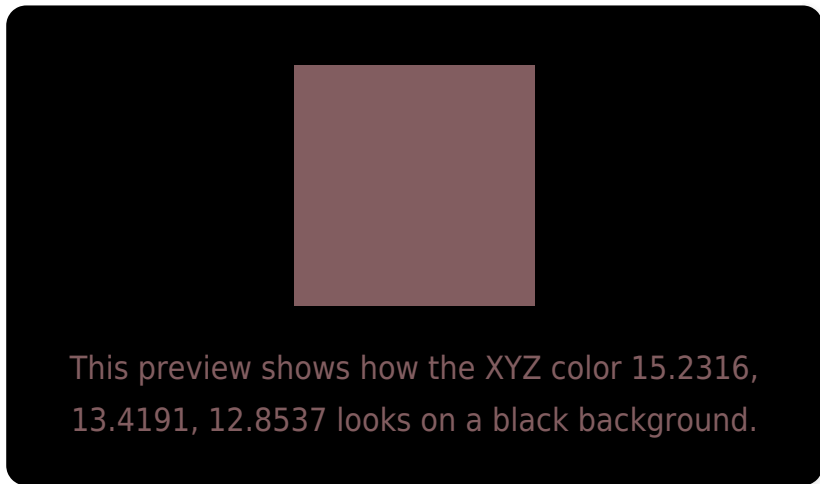
Large Text (above 18pt) WCAG AA ✓ Pass

Any Text WCAG AA ✓ Pass

Large Text (above 18pt) WCAG AAA ✓ Pass

Any Text WCAG AAA × Fail

Black Background



Color Contrast Check

Large Text (above 18pt) WCAG AA ✓ Pass

Any Text WCAG AA × Fail

Large Text (above 18pt) WCAG AAA × Fail

Any Text WCAG AAA × Fail

If you want to check with other color combinations, try the [Color Contrast Checker](#).

XYZ 15.2316, 13.4191, 12.8537

Background



This preview shows how black text looks on a background with the XYZ color 15.2316, 13.4191, 12.8537.



This preview shows how white text looks on a background with the XYZ color 15.2316, 13.4191,

Color Blindness Simulation

Color vision deficiency is a very complex topic, and I could not describe the different causes any better than Wikipedia does, so if you want to learn more, you should check out their [article about color blindness](#).

Dichromacy



Original Color

15.2316, 13.4191, 12.8537

Protanopia

12.9260, 13.4456, 14.2259

Deuteranopia

13.7299, 13.4629, 12.7014



Tritanopia

15.3333, 13.3202, 13.8195

Trichromacy



Original Color

15.2316, 13.4191, 12.8537

Protanomaly

13.6534, 13.4019, 13.6716

Deuteranomaly

14.2254, 13.4406, 12.6710

Tritanomaly

15.2852, 13.3010, 13.5661

Monochromacy



Original Color

15.2316, 13.4191, 12.8537

Achromatopsia

13.1579, 13.8432, 15.0752

Achromatomaly

13.7162, 13.5646, 14.2072

CSS Examples

Text

The CSS property to change the color of the text to XYZ 15.2316, 13.4191, 12.8537 is called "color". The color property can be set on classes, ids or directly on the HTML element.

This example shows how text in the color `rgb(130, 93, 96)` looks like.

```
.text, #text, p{  
    color:rgb(130, 93, 96)  
}
```

If you want to add a text shadow in that color use the text-shadow property, you can generate a text shadow directly with our [CSS Text Shadow Generator](#).

Here you see how black text with a 4 pixel rgb(130, 93, 96) colored shadow looks like.

```
.shadow{ text-shadow: 4px 4px 2px rgb(130, 93, 96) }
```

Border

The CSS property to change the border of an element to XYZ 15.2316, 13.4191, 12.8537 is called "border". The border property can be set on classes, ids or directly on the HTML element.

This example shows the color as border, it can be applied via the CSS property "border" or "border-color".

```
.border, #border, table{ border:4px solid rgb(130, 93, 96) }
```


If only the border color should be changed use the property border-color.

```
.border{ border-color:rgb(130, 93, 96) }
```

If you want to add a box shadow in that color use:

Here you see how a box with a 4 pixel rgb(130, 93, 96) colored shadow looks like.

```
.boxshadow{ -moz-box-shadow:4px 4px 4px  
4px rgb(130, 93, 96); -webkit-box-  
shadow:4px 4px 4px 4px rgb(130, 93, 96);  
box-shadow:4px 4px 4px 4px rgb(130, 93,  
96) }
```

Background

The CSS property to change the background color of an element to XYZ 15.2316, 13.4191, 12.8537 is called "background". The background property can be set on classes, ids or directly on the HTML element.

```
.background, #background, body{  
background: rgb(130, 93, 96) }
```

If only the background color should be changed can be used:

```
.background{ background-color: rgb(130, 93,  
96) }
```

This example shows the color as background, it is applied via the CSS property "background".

To optimize and compress your CSS code, you can use our [online CSS compressor and optimizer](#) based on csstidy. If you want to create a linear or radial gradient as background or border, check our [CSS Gradient Generator](#).

Hey! You found this booklet interesting? Support Converting Colors with the new Membership Option!

The pro membership hides all ads, plus gives you double the colors in the color bucket, and more awesome pro features!

[Learn more, Memberships starting at \\$2.50/m!](#)

**Follow me
on Twitter!**

@ConvertingColor