

Converting Colors

XYZ(15.3156, 14.8027, 11.0136)

Have a look what the booklet for
XYZ(15.3156, 14.8027, 11.0136)
contains.

XYZ(15.2241, 14.7029, 11.0524)	3
<i>Conversions</i>	4
<i>Details</i>	6
<i>Harmonies</i>	12
<i>Previews</i>	24
<i>Color Blindness Simulation</i>	28
<i>CSS Examples</i>	31

Color

**XYZ(15.2241, 14.7029,
11.0524)**

Conversions

Conversions Part 1

Format	Color
Hex	7F6657
RGB	127, 102, 87
RGB Percent	50%, 40%, 34%
CMY	0.5020, 0.6000, 0.6588
CMYK	0.00, 0.20, 0.31, 0.50
HSL	23°, 19%, 42%
HSV	23°, 31%, 50%
XYZ	15.2241, 14.7029, 11.0524
YIQ	107.7650, 19.7150, 0.6350

Conversions

Conversions Part 2

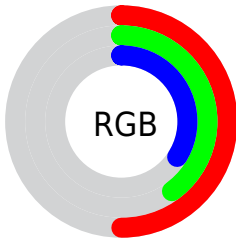
Format	Color
R_{YB}	127, 111, 87
Decimal	8349271
CIE Lab	45.22, 7.64, 12.26
CIE LCh	45, 14.450, 58.073
Yxy	14.7029, 0.3715, 0.3588
Android (android.graphics.Color)	4286539351 (0xFF7F6657)
YUV	107.7650, -10.2371, 16.8691
Hunter-Lab	38.3444, 3.7683, 9.7513

Details

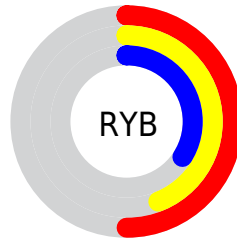
The XYZ color **15.2241, 14.7029, 11.0524** is a dark color, and the websafe version is hex **996666**. A complement of this color would be **13.5553, 15.1465, 22.2879**, and the grayscale version is **14.2123, 14.9524, 16.2832**.

A 20% lighter version of the original color is **34.7290, 34.2919, 28.4555**, and **4.8447, 4.4773, 2.7994** is the 20% darker color. If you saturate the color by 10%, you get **14.0073, 13.0278, 8.3082**, and if you desaturate by 10%, it is **16.6077, 16.5653, 14.3030**.

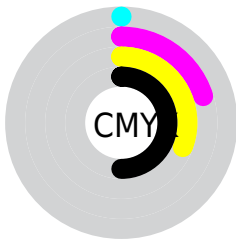
Distribution



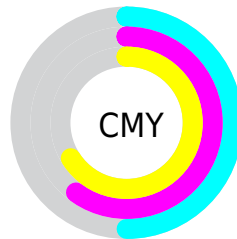
- Red (50%)
- Green (40%)
- Blue (34%)



- Red (50%)
- Yellow (44%)
- Blue (34%)



- Cyan (0%)
- Magenta (20%)
- Yellow (31%)
- Black (50%)



- Cyan (50%)
- Magenta (60%)
- Yellow (66%)

Brightness & Saturation Gradients

These gradients show how the XYZ color 15.2241, 14.7029, 11.0524 changes by changing the brightness by 10 percent. The first figure shows a shift by +10% for each color and the second figure -10%.

Similar to the brightness gradients but the following saturation gradients show a change of the XYZ color 15.2241, 14.7029, 11.0524 by changing the saturation by 10% instead.

■ 15.2241, 14.7029,
11.0524

■ 15.2241, 14.7029,
11.0524

218.0802,
221.5608, 208.7770

■ 9.0642, 8.6111,
5.9875

■ 34.8143, 34.3311,
28.3952

■ 4.8405, 4.4884,
2.7688

■ 48.9752, 48.6364,
41.5101

■ 2.1878, 1.9504,
0.9778

■ 66.5339, 66.4483,
58.1454

■ 0.7363, 0.5784,
0.0000

■ 87.8556, 88.1512,
78.7196

■ 0.0000, 0.0000,
0.0000

■ 113.3057,
114.1295, 103.6514

143.2496,

144.7676, 133.3592

178.0527,
180.4499, 168.2615

■ 15.2241, 14.7029,
11.0524

■ 15.2241, 14.7029,
11.0524

■ 14.0073, 13.0278,
8.3082

■ 16.6077, 16.5653,
14.3030

■ 12.9492, 11.5318,
6.0436

■ 18.1634, 18.6187,
18.0830

■ 12.0429, 10.2092,
4.2306

■ 19.8976, 20.8693,
22.4154

■ 11.2802, 9.0531,
2.8381

■ 21.8161, 23.3225,
27.3212

■ 10.6522, 8.0561,
1.8307

■ 23.9244, 25.9832,
32.8205

■ 10.1488, 7.2099,
1.1673

■ 26.2277, 28.8564,
38.9324

■ 9.7945, 6.5961,
0.7569

■ 28.7311, 31.9467,
45.6751

■ 31.4395, 35.2588,
53.0661

■ 34.3574, 38.7970,
61.1221

Harmonies

Analogous

The Analogous color harmony consists of three colors that are next to each other on the color wheel.



16.0995, 14.7029, 13.1101



15.2241, 14.7029, 11.0524



14.0520, 14.7029, 10.2964

Triad

The Triadic color harmony groups three colors that are evenly spaced from another and form a triangle on the color wheel.



15.2241, 14.7029, 11.0524



11.8037, 14.7029, 15.7890



15.0830, 14.7029, 22.5385

Complementary

The Complementary color scheme is a pair of colors which are on the opposite of each other on the color wheel.



15.2241, 14.7029, 11.0524



13.5553, 15.1465, 22.2879

Split Complementary

Split-complementary colors differ from the complementary color scheme. The scheme consists of three colors, the original color and two neighbors of the complement color.



13.8976, 14.7029, 23.5193



15.2241, 14.7029, 11.0524



12.0455, 14.7029, 19.3064

Square

The Square scheme is like the rectangle color scheme, but the four colors are evenly spaced on the color wheel.



15.2241, 14.7029, 11.0524



12.1155, 14.7029, 12.7779



12.7955, 14.7029, 22.2620



16.0149, 14.7029, 19.7434

Rectangle

The Rectangle color scheme consists of four colors that form a rectangle on the color wheel.



15.2241, 14.7029, 11.0524



13.2745, 14.7029, 10.5372



12.7955, 14.7029, 22.2620



14.6990, 14.7029, 23.1074

Sweetspot

The Sweet Spot groups the original color and five complimentary colors.



15.2245, 14.7036, 11.0527



33.2062, 34.2296, 34.0637



15.1040, 12.5059, 17.0447



7.6864, 7.8991, 7.7571



62.3462, 65.5931, 71.4309



8.4577, 8.8982, 9.6901

Same Dimension

The Same Dimension uses a secret algorithm to generate beautiful new colors.



15.2245, 14.7036, 11.0527



25.6205, 24.0758, 16.0670



17.3915, 19.0376, 11.7750



4.4497, 4.5880, 4.5712



9.8767, 6.6498, 0.7630



0.0000, 0.0000, 0.0000

Inverse Universe

The Inverse Universe completely reimagines the original color for something new.



13.5553, 15.1465, 22.2879



22.1185, 24.9974, 39.6155



11.6175, 11.2709, 21.6420



4.3151, 4.6242, 5.4784



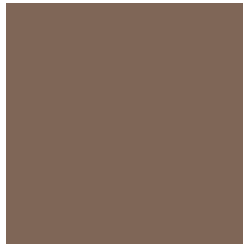
6.7087, 7.2359, 21.2930



0.0000, 0.0000, 0.0000

Previews

White Background



This preview shows how the XYZ color 15.2241, 14.7029, 11.0524 looks on a white background.

Color Contrast Check

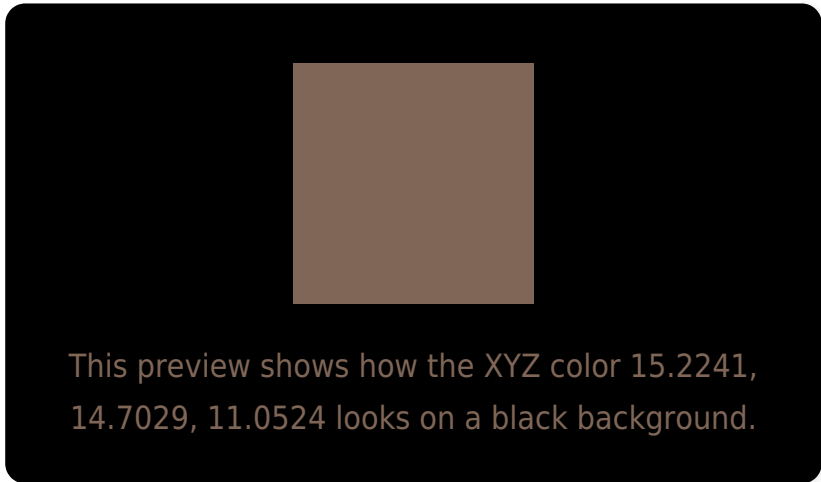
Large Text (above 18pt) WCAG AA ✓ Pass

Any Text WCAG AA ✓ Pass

Large Text (above 18pt) WCAG AAA ✓ Pass

Any Text WCAG AAA × Fail

Black Background



Color Contrast Check

Large Text (above 18pt) WCAG AA ✓ Pass

Any Text WCAG AA × Fail

Large Text (above 18pt) WCAG AAA × Fail

Any Text WCAG AAA × Fail

If you want to check with other color combinations, try the [Color Contrast Checker](#).

XYZ 15.2241, 14.7029, 11.0524

Background



This preview shows how black text looks on a background with the XYZ color 15.2241, 14.7029, 11.0524.



This preview shows how white text looks on a background with the XYZ color 15.2241, 14.7029,

Color Blindness Simulation

Color vision deficiency is a very complex topic, and I could not describe the different causes any better than Wikipedia does, so if you want to learn more, you should check out their [article about color blindness](#).

Dichromacy



Original Color

15.2241, 14.7029, 11.0524

Protanopia

13.8709, 14.7474, 11.5666

Deuteranopia

15.0280, 14.7486, 11.0715



Tritanopia

16.1689, 14.6523, 15.8859

Trichromacy



Original Color

15.2241, 14.7029, 11.0524

Protanomaly

14.2842, 14.6593, 11.3092

Deuteranomaly

15.1747, 14.8242, 11.0784

Tritanomaly

15.7595, 14.6236, 14.0486

Monochromacy



Original Color

15.2241, 14.7029, 11.0524

Achromatopsia

14.2537, 14.9960, 16.3306

Achromatomaly

14.5245, 14.8730, 14.1618

CSS Examples

Text

The CSS property to change the color of the text to XYZ 15.2241, 14.7029, 11.0524 is called "color". The color property can be set on classes, ids or directly on the HTML element.

This example shows how text in the color `rgb(127, 102, 87)` looks like.

```
.text, #text, p{  
    color:rgb(127, 102, 87)  
}
```

If you want to add a text shadow in that color use the text-shadow property, you can generate a text shadow directly with our [CSS Text Shadow Generator](#).

Here you see how black text with a 4 pixel rgb(127, 102, 87) colored shadow looks like.

```
.shadow{ text-shadow: 4px 4px 2px rgb(127, 102, 87) }
```

Border

The CSS property to change the border of an element to XYZ 15.2241, 14.7029, 11.0524 is called "border". The border property can be set on classes, ids or directly on the HTML element.

This example shows the color as border, it can be applied via the CSS property "border" or "border-color".

```
.border, #border, table{ border:4px solid rgb(127, 102, 87) }
```


If only the border color should be changed use the property `border-color`.

```
.border{ border-color:rgb(127, 102, 87) }
```

If you want to add a box shadow in that color use:

Here you see how a box with a 4 pixel `rgb(127, 102, 87)` colored shadow looks like.

```
.boxshadow{ -moz-box-shadow:4px 4px 4px  
4px rgb(127, 102, 87); -webkit-box-  
shadow:4px 4px 4px 4px rgb(127, 102, 87);  
box-shadow:4px 4px 4px 4px rgb(127, 102,  
87) }
```

Background

The CSS property to change the background color of an element to XYZ 15.2241, 14.7029, 11.0524 is called "background". The background property can be set on classes, ids or directly on the HTML element.

```
.background, #background, body{  
background: rgb(127, 102, 87) }
```

If only the background color should be changed can be used:

```
.background{ background-color: rgb(127,  
102, 87) }
```

This example shows the color as background, it is applied via the CSS property "background".

To optimize and compress your CSS code, you can use our [online CSS compressor and optimizer](#) based on csstidy. If you want to create a linear or radial gradient as background or border, check our [CSS Gradient Generator](#).

Hey! You found this booklet interesting? Support Converting Colors with the new Membership Option!

The pro membership hides all ads, plus gives you double the colors in the color bucket, and more awesome pro features!

[Learn more, Memberships starting at \\$2.50/m!](#)

**Follow me
on Twitter!**

@ConvertingColor