

Converting Colors

XYZ(15.3277, 14.4337, 14.0248)

Have a look what the booklet for
XYZ(15.3277, 14.4337, 14.0248)
contains.

XYZ(15.3149, 14.3944, 14.0278)	3
<i>Conversions</i>	4
<i>Details</i>	6
<i>Harmonies</i>	12
<i>Previews</i>	24
<i>Color Blindness Simulation</i>	28
<i>CSS Examples</i>	31

Color

**XYZ(15.3149, 14.3944,
14.0278)**

Conversions

Conversions Part 1

Format	Color
Hex	7D6464
RGB	125, 100, 100
RGB Percent	49%, 39%, 39%
CMY	0.5098, 0.6078, 0.6078
CMYK	0.00, 0.20, 0.20, 0.51
HSL	0°, 11%, 44%
HSV	0°, 20%, 49%
XYZ	15.3149, 14.3944, 14.0278
YIQ	107.4750, 14.9000, 5.3000

Conversions

Conversions Part 2

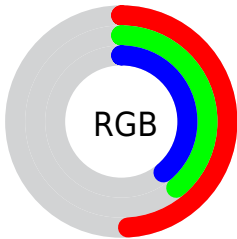
Format	Color
RYB	125, 100, 100
Decimal	8217700
CIELab	44.79, 10.04, 3.80
CIElCh	45, 10.736, 20.753
Yxy	14.3944, 0.3502, 0.3291
Android (android.graphics.Color)	4286407780 (0xFF7D6464)
YUV	107.4750, -3.6852, 15.3694
Hunter-Lab	37.9400, 5.6587, 4.6363

Details

The XYZ color **15.3149, 14.3944, 14.0278** is a dark color, and the websafe version is hex **666666**. A complement of this color would be **16.2908, 18.8569, 22.1834**, and the grayscale version is **14.1145, 14.8495, 16.1711**.

A 20% lighter version of the original color is **35.0126, 33.8326, 33.9631**, and **4.8962, 4.3397, 3.9478** is the 20% darker color. If you saturate the color by 10%, you get **13.6475, 11.9547, 10.7126**, and if you desaturate by 10%, it is **17.2599, 17.2405, 17.8939**.

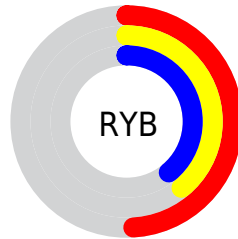
Distribution



Red (49%)

Green (39%)

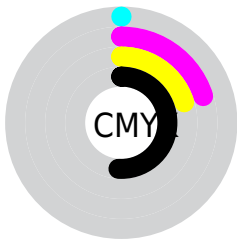
Blue (39%)



Red (49%)

Yellow (39%)

Blue (39%)

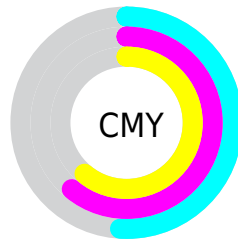


Cyan (0%)

Magenta (20%)

Yellow (20%)

Black (51%)



Cyan (51%)

Magenta (61%)

Yellow (61%)

Brightness & Saturation Gradients

These gradients show how the XYZ color 15.3149, 14.3944, 14.0278 changes by changing the brightness by 10 percent. The first figure shows a shift by +10% for each color and the second figure -10%.

Similar to the brightness gradients but the following saturation gradients show a change of the XYZ color 15.3149, 14.3944, 14.0278 by changing the saturation by 10% instead.

■ 15.3149, 14.3944,
14.0278

■ 15.3149, 14.3944,
14.0278

218.6152,
219.6708, 228.8381

■ 9.1284, 8.3955,
8.0010

■ 34.9718, 33.7872,
33.8562

■ 4.8828, 4.3490,
4.0078

■ 49.1730, 47.9499,
48.4949

■ 2.2127, 1.8707,
1.6296

■ 66.7764, 65.6026,
66.8413

■ 0.7494, 0.5306,
0.3118

■ 88.1475, 87.1298,
89.3140

■ 0.0000, 0.0000,
0.0000

113.6515,
112.9158, 116.3315

143.6539,

143.3451, 148.3123

178.5200,
178.8019, 185.6750

■ 15.3149, 14.3944,
14.0278

■ 15.3149, 14.3944,
14.0278

■ 13.6475, 11.9547,
10.7126

■ 17.2599, 17.2405,
17.8939

■ 12.2440, 9.9009,
7.9224

■ 19.4930, 20.5082,
22.3334

■ 11.0911, 8.2139,
5.6306

■ 22.0258, 24.2144,
27.3687

■ 10.1742, 6.8721,
3.8079

■ 24.8688, 28.3744,
33.0207

■ 9.4769, 5.8517,
2.4218

■ 28.0320, 33.0029,
39.3092

■ 8.9809, 5.1259,
1.4358

■ 31.5249, 38.1139,
46.2532

■ 8.6648, 4.6633,
0.8075

■ 35.3566, 43.7207,
53.8710

■ 8.4577, 4.3603,
0.3959

■ 39.5361, 49.8363,
62.1800

■ 8.4577, 4.3603,
0.3958

■ 44.0717, 56.4730,
71.1970

Harmonies

Analogous

The Analogous color harmony consists of three colors that are next to each other on the color wheel.



15.4092, 14.3944, 16.4597



15.3149, 14.3944, 14.0278



14.7731, 14.3944, 12.2316

Triad

The Triadic color harmony groups three colors that are evenly spaced from another and form a triangle on the color wheel.



15.3149, 14.3944, 14.0278



12.4201, 14.3944, 12.8194



13.4130, 14.3944, 20.9230

Complementary

The Complementary color scheme is a pair of colors which are on the opposite of each other on the color wheel.



15.3149, 14.3944, 14.0278



16.2908, 18.8569, 22.1834

Split Complementary

Split-complementary colors differ from the complementary color scheme. The scheme consists of three colors, the original color and two neighbors of the complement color.



12.6449, 14.3944, 19.7062



15.3149, 14.3944, 14.0278



12.0880, 14.3944, 14.9119

Square

The Square scheme is like the rectangle color scheme, but the four colors are evenly spaced on the color wheel.



15.3149, 14.3944, 14.0278



13.0942, 14.3944, 11.5872



12.1685, 14.3944, 17.4422



14.2860, 14.3944, 20.6215

Rectangle

The Rectangle color scheme consists of four colors that form a rectangle on the color wheel.



15.3149, 14.3944, 14.0278



14.2433, 14.3944, 11.5519



12.1685, 14.3944, 17.4422



13.1346, 14.3944, 20.6735

Sweetspot

The Sweet Spot groups the original color and five complimentary colors.



15.3153, 14.3951, 14.0281



32.3871, 33.0376, 34.9839



16.7165, 14.9552, 21.4079



7.3224, 7.4497, 7.8691



60.6688, 63.8283, 69.5090



7.9400, 8.3535, 9.0970

Same Dimension

The Same Dimension uses a secret algorithm to generate beautiful new colors.



15.3153, 14.3951, 14.0281



25.9975, 23.6879, 22.2814



16.6074, 16.9793, 14.4588



4.3278, 4.3443, 4.5306



8.8272, 4.5508, 0.4131



0.0000, 0.0000, 0.0000

Inverse Universe

The Inverse Universe completely reimagines the original color for something new.



16.2908, 18.8569, 22.1834



28.0777, 33.2032, 39.6734



14.8069, 15.8892, 21.6888



4.4464, 4.8868, 5.5222



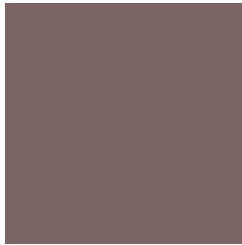
11.5161, 16.8507, 22.8955



0.0000, 0.0000, 0.0000

Previews

White Background



This preview shows how the XYZ color 15.3149, 14.3944, 14.0278 looks on a white background.

Color Contrast Check

Large Text (above 18pt) WCAG AA ✓ Pass

Any Text WCAG AA ✓ Pass

Large Text (above 18pt) WCAG AAA ✓ Pass

Any Text WCAG AAA × Fail

Black Background



This preview shows how the XYZ color 15.3149, 14.3944, 14.0278 looks on a black background.

Color Contrast Check

Large Text (above 18pt) WCAG AA ✓ Pass

Any Text WCAG AA × Fail

Large Text (above 18pt) WCAG AAA × Fail

Any Text WCAG AAA × Fail

If you want to check with other color combinations, try the [Color Contrast Checker](#).

XYZ 15.3149, 14.3944, 14.0278

Background



This preview shows how black text looks on a background with the XYZ color 15.3149, 14.3944, 14.0278.



This preview shows how white text looks on a background with the XYZ color 15.3149, 14.3944,

Color Blindness Simulation

Color vision deficiency is a very complex topic, and I could not describe the different causes any better than Wikipedia does, so if you want to learn more, you should check out their [article about color blindness](#).

Dichromacy



Original Color

15.3149, 14.3944, 14.0278

Protanopia

13.9089, 14.5386, 14.9051

Deuteranopia

14.6594, 14.3448, 14.0528



Tritanopia

15.7199, 14.4208, 15.8649

Trichromacy



Original Color

15.3149, 14.3944, 14.0278

Protanomaly

14.4188, 14.5048, 14.6101

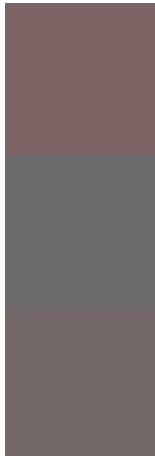
Deuteranomaly

14.8391, 14.2924, 14.0332

Tritanomaly

15.5647, 14.3588, 15.0479

Monochromacy



Original Color

15.3149, 14.3944, 14.0278

Achromatopsia

13.9749, 14.7027, 16.0113

Achromatomaly

14.3884, 14.4775, 15.1328

CSS Examples

Text

The CSS property to change the color of the text to XYZ 15.3149, 14.3944, 14.0278 is called "color". The color property can be set on classes, ids or directly on the HTML element.

This example shows how text in the color `rgb(125, 100, 100)` looks like.

```
.text, #text, p{  
    color:rgb(125, 100, 100)  
}
```

If you want to add a text shadow in that color use the text-shadow property, you can generate a text shadow directly with our [CSS Text Shadow Generator](#).

Here you see how black text with a 4 pixel rgb(125, 100, 100) colored shadow looks like.

```
.shadow{ text-shadow: 4px 4px 2px rgb(125, 100, 100) }
```

Border

The CSS property to change the border of an element to XYZ 15.3149, 14.3944, 14.0278 is called "border". The border property can be set on classes, ids or directly on the HTML element.

This example shows the color as border, it can be applied via the CSS property "border" or "border-color".

```
.border, #border, table{ border:4px solid rgb(125, 100, 100) }
```


If only the border color should be changed use the property border-color.

```
.border{ border-color:rgb(125, 100, 100) }
```

If you want to add a box shadow in that color use:

Here you see how a box with a 4 pixel rgb(125, 100, 100) colored shadow looks like.

```
.boxshadow{ -moz-box-shadow:4px 4px 4px  
4px rgb(125, 100, 100); -webkit-box-  
shadow:4px 4px 4px 4px rgb(125, 100, 100);  
box-shadow:4px 4px 4px 4px rgb(125, 100,  
100) }
```

Background

The CSS property to change the background color of an element to XYZ 15.3149, 14.3944, 14.0278 is called "background". The background property can be set on classes, ids or directly on the HTML element.

```
.background, #background, body{  
background: rgb(125, 100, 100) }
```

If only the background color should be changed can be used:

```
.background{ background-color: rgb(125,  
100, 100) }
```

This example shows the color as background, it is applied via the CSS property "background".

To optimize and compress your CSS code, you can use our [online CSS compressor and optimizer](#) based on csstidy. If you want to create a linear or radial gradient as background or border, check our [CSS Gradient Generator](#).

Hey! You found this booklet interesting? Support Converting Colors with the new Membership Option!

The pro membership hides all ads, plus gives you double the colors in the color bucket, and more awesome pro features!

[Learn more, Memberships starting at \\$2.50/m!](#)

**Follow me
on Twitter!**

@ConvertingColor