

# Converting Colors

XYZ(15.7206, 15.4730, 11.1751)

Have a look what the booklet for  
XYZ(15.7206, 15.4730, 11.1751)  
contains.

<b>XYZ(15.6740, 15.3805, 11.1594)</b> .....	3
<b><i>Conversions</i></b> .....	4
<b><i>Details</i></b> .....	6
<b><i>Harmonies</i></b> .....	12
<b><i>Previews</i></b> .....	24
<b><i>Color Blindness Simulation</i></b> .....	28
<b><i>CSS Examples</i></b> .....	31

# Color

**XYZ(15.6740, 15.3805,  
11.1594)**

# Conversions

## Conversions Part 1

<b>Format</b>	<b>Color</b>
Hex	806957
RGB	128, 105, 87
RGB Percent	50%, 41%, 34%
CMY	0.4980, 0.5882, 0.6588
CMYK	0.00, 0.18, 0.32, 0.50
HSL	26°, 19%, 42%
HSV	26°, 32%, 50%
XYZ	15.6740, 15.3805, 11.1594
YIQ	109.8250, 19.4860, -0.7220

# Conversions

## Conversions Part 2

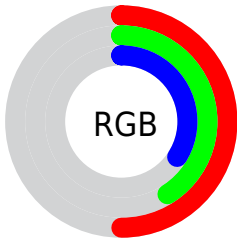
<b>Format</b>	<b>Color</b>
<b>R<sub>YB</sub></b>	128, 119, 87
Decimal	8415575
CIE Lab	46.15, 6.30, 13.56
CIE LCh	46, 14.952, 65.092
Yxy	15.3805, 0.3713, 0.3643
Android (android.graphics.Color)	4286605655 (0xFF806957)
YUV	109.8250, -11.2527, 15.9395
Hunter-Lab	39.2180, 2.7085, 10.5817

# Details

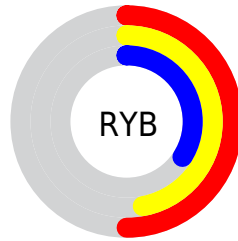
The XYZ color **15.6740, 15.3805, 11.1594** is a dark color, and the websafe version is hex **666666**. A complement of this color would be **13.4025, 14.7361, 22.5602**, and the grayscale version is **14.7985, 15.5692, 16.9549**.

A 20% lighter version of the original color is **35.4599, 35.4068, 28.6322**, and **5.0729, 4.8130, 2.8521** is the 20% darker color. If you saturate the color by 10%, you get **14.4962, 13.7888, 8.4115**, and if you desaturate by 10%, it is **17.0071, 17.1343, 14.4170**.

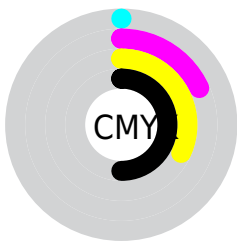
# Distribution



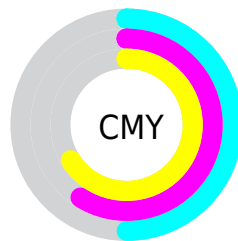
- Red (50%)
- Green (41%)
- Blue (34%)



- Red (50%)
- Yellow (47%)
- Blue (34%)



- Cyan (0%)
- Magenta (18%)
- Yellow (32%)
- Black (50%)



- Cyan (50%)
- Magenta (59%)
- Yellow (66%)

# Brightness & Saturation Gradients

These gradients show how the XYZ color 15.6740, 15.3805, 11.1594 changes by changing the brightness by 10 percent. The first figure shows a shift by +10% for each color and the second figure -10%.

Similar to the brightness gradients but the following saturation gradients show a change of the XYZ color 15.6740, 15.3805, 11.1594 by changing the saturation by 10% instead.



■ 15.6740, 15.3805,  
11.1594

■ 15.6740, 15.3805,  
11.1594

220.7187,  
225.6579, 209.5344

■ 9.3831, 9.0869,  
6.0586

■ 35.5934, 35.5193,  
28.5957

■ 5.0510, 4.7979,  
2.8114

■ 49.9526, 50.1333,  
41.7683

■ 2.3123, 2.1292,  
0.9992

■ 67.7319, 68.2895,  
58.4686

■ 0.8009, 0.6810,  
0.0000

■ 89.2968, 90.3723,  
79.1151

■ 0.0000, 0.0000,  
0.0000

■ 115.0126,  
116.7662, 104.1264

145.2446,

147.8555, 133.9211

180.3582,  
184.0246, 168.9175

■ 15.6740, 15.3805,  
11.1594

■ 15.6740, 15.3805,  
11.1594

■ 14.4962, 13.7888,  
8.4115

■ 17.0071, 17.1343,  
14.4170

■ 13.4660, 12.3520,  
6.1461

■ 18.5004, 19.0526,  
18.2077

■ 12.5771, 11.0655,  
4.3347

■ 20.1599, 21.1409,  
22.5546

■ 11.8217, 9.9236,  
2.9455

■ 21.9908, 23.4034,  
27.4793

■ 11.1914, 8.9203,  
1.9426

■ 23.9985, 25.8443,  
33.0021

■ 10.6766, 8.0488,  
1.2838

■ 26.1876, 28.4676,  
39.1423

■ 10.3262, 7.4374,  
0.8913

■ 28.5630, 31.2772,  
45.9184

■ 31.1291, 34.2768,  
53.3481

■ 33.8902, 37.4701,  
61.4482

# Harmonies

## Analogous

The Analogous color harmony consists of three colors that are next to each other on the color wheel.



16.7143, 15.3805, 13.0313



15.6740, 15.3805, 11.1594



14.4025, 15.3805, 10.6898

# Triad

The Triadic color harmony groups three colors that are evenly spaced from another and form a triangle on the color wheel.



15.6740, 15.3805, 11.1594



12.3137, 15.3805, 17.3767



16.0715, 15.3805, 23.1623

# Complementary

The Complementary color scheme is a pair of colors which are on the opposite of each other on the color wheel.



15.6740, 15.3805, 11.1594



13.4025, 14.7361, 22.5602

# Split Complementary

Split-complementary colors differ from the complementary color scheme. The scheme consists of three colors, the original color and two neighbors of the complement color.



14.8370, 15.3805, 24.7445



15.6740, 15.3805, 11.1594



12.7060, 15.3805, 21.1087

# Square

The Square scheme is like the rectangle color scheme, but the four colors are evenly spaced on the color wheel.



15.6740, 15.3805, 11.1594



12.5091, 15.3805, 13.9645



13.6119, 15.3805, 23.9434



16.9530, 15.3805, 19.8760



# Rectangle

The Rectangle color scheme consists of four colors that form a rectangle on the color wheel.



15.6740, 15.3805, 11.1594



13.6051, 15.3805, 11.1667



13.6119, 15.3805, 23.9434



15.6815, 15.3805, 23.9312

# Sweetspot

The Sweet Spot groups the original color and five complimentary colors.



15.6744, 15.3812, 11.1597



33.0770, 34.1848, 33.3621



15.1376, 12.5366, 16.4407



7.6664, 7.9050, 7.6095



62.3462, 65.5931, 71.4309



8.4577, 8.8982, 9.6901



# Same Dimension

The Same Dimension uses a secret algorithm to generate beautiful new colors.



15.6744, 15.3812, 11.1597



26.1487, 25.1322, 16.2430



17.9899, 20.0123, 11.9316



4.4710, 4.6308, 4.5783



10.2405, 7.3774, 0.8842



0.0000, 0.0000, 0.0000



# Inverse Universe

The Inverse Universe completely reimagines the original color for something new.



13.4025, 14.7361, 22.5602



21.5285, 23.8175, 39.4188



11.4606, 10.8523, 21.9129



4.2932, 4.5805, 5.4711



6.1496, 6.1177, 21.1067

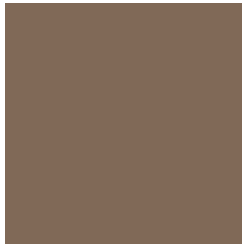


0.0000, 0.0000, 0.0000



# Previews

## White Background



This preview shows how the XYZ color 15.6740, 15.3805, 11.1594 looks on a white background.

## Color Contrast Check

Large Text (above 18pt) WCAG AA ✓ Pass

Any Text WCAG AA ✓ Pass

Large Text (above 18pt) WCAG AAA ✓ Pass

Any Text WCAG AAA × Fail



# Black Background



This preview shows how the XYZ color 15.6740, 15.3805, 11.1594 looks on a black background.

## Color Contrast Check

Large Text (above 18pt) WCAG AA ✓ Pass

Any Text WCAG AA × Fail

Large Text (above 18pt) WCAG AAA × Fail

Any Text WCAG AAA × Fail

If you want to check with other color combinations, try the [Color Contrast Checker](#).

# XYZ 15.6740, 15.3805, 11.1594

## Background



This preview shows how black text looks on a background with the XYZ color 15.6740, 15.3805, 11.1594.



This preview shows how white text looks on a background with the XYZ color 15.6740, 15.3805,



# Color Blindness Simulation

Color vision deficiency is a very complex topic, and I could not describe the different causes any better than Wikipedia does, so if you want to learn more, you should check out their [article about color blindness](#).

## Dichromacy



### Original Color

15.6740, 15.3805, 11.1594

### Protanopia

14.4743, 15.3716, 11.6553

### Deuteranopia

15.6740, 15.3805, 11.1594



## Tritanopia

16.7718, 15.3744, 16.8354

# Trichromacy



## Original Color

15.6740, 15.3805, 11.1594

## Protanomaly

14.8697, 15.4228, 11.4257

## Deuteranomaly

15.6740, 15.3805, 11.1594

## Tritanomaly

16.3018, 15.3269, 14.6696

# Monochromacy



## Original Color

15.6740, 15.3805, 11.1594

## Achromatopsia

14.8208, 15.5926, 16.9804

## Achromatomaly

15.0970, 15.4663, 14.7600

# CSS Examples

## Text

The CSS property to change the color of the text to XYZ 15.6740, 15.3805, 11.1594 is called "color". The color property can be set on classes, ids or directly on the HTML element.

This example shows how text in the color `rgb(128, 105, 87)` looks like.

```
.text, #text, p{  
    color:rgb(128, 105, 87)  
}
```

If you want to add a text shadow in that color use the text-shadow property, you can generate a text shadow directly with our [CSS Text Shadow Generator](#).

Here you see how black text with a 4 pixel rgb(128, 105, 87) colored shadow looks like.

```
.shadow{ text-shadow: 4px 4px 2px rgb(128, 105, 87) }
```

## Border

The CSS property to change the border of an element to XYZ 15.6740, 15.3805, 11.1594 is called "border". The border property can be set on classes, ids or directly on the HTML element.

This example shows the color as border, it can be applied via the CSS property "border" or "border-color".

```
.border, #border, table{ border:4px solid rgb(128, 105, 87) }
```



If only the border color should be changed use the property border-color.

```
.border{ border-color:rgb(128, 105, 87) }
```

If you want to add a box shadow in that color use:

Here you see how a box with a 4 pixel rgb(128, 105, 87) colored shadow looks like.

```
.boxshadow{ -moz-box-shadow:4px 4px 4px  
4px rgb(128, 105, 87); -webkit-box-  
shadow:4px 4px 4px 4px rgb(128, 105, 87);  
box-shadow:4px 4px 4px 4px rgb(128, 105,  
87) }
```

# Background

The CSS property to change the background color of an element to XYZ 15.6740, 15.3805, 11.1594 is called "background". The background property can be set on classes, ids or directly on the HTML element.

```
.background, #background, body{  
background: rgb(128, 105, 87) }
```

If only the background color should be changed can be used:

```
.background{ background-color: rgb(128,  
105, 87) }
```

This example shows the color as background, it is applied via the CSS property "background".

To optimize and compress your CSS code, you can use our [online CSS compressor and optimizer](#) based on csstidy. If you want to create a linear or radial gradient as background or border, check our [CSS Gradient Generator](#).

Hey! You found this booklet interesting? Support Converting Colors with the new Membership Option!

The pro membership hides all ads, plus gives you double the colors in the color bucket, and more awesome pro features!

**[Learn more, Memberships starting at \\$2.50/m!](#)**

**Follow me  
on Twitter!**

@ConvertingColor