

Converting Colors

XYZ(15.8086, 14.9318, 9.1576)

Have a look what the booklet for
XYZ(15.8086, 14.9318, 9.1576)
contains.

XYZ(15.8248, 14.9115, 9.0653)	3
<i>Conversions</i>	4
<i>Details</i>	6
<i>Harmonies</i>	12
<i>Previews</i>	24
<i>Color Blindness Simulation</i>	28
<i>CSS Examples</i>	31

Color

**XYZ(15.8248, 14.9115,
9.0653)**

Conversions

Conversions Part 1

Format	Color
Hex	86654D
RGB	134, 101, 77
RGB Percent	53%, 40%, 30%
CMY	0.4745, 0.6039, 0.6980
CMYK	0.00, 0.25, 0.43, 0.47
HSL	25°, 27%, 41%
HSV	25°, 43%, 53%
XYZ	15.8248, 14.9115, 9.0653
YIQ	108.1310, 27.3720, -0.4680

Conversions

Conversions Part 2

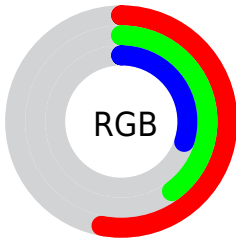
Format	Color
RYB	134, 118, 77
Decimal	8807757
CIELab	45.51, 9.92, 18.72
CIELCh	46, 21.193, 62.075
Yxy	14.9115, 0.3976, 0.3746
Android (android.graphics.Color)	4286997837 (0xFF86654D)
YUV	108.1310, -15.3476, 22.6871
Hunter-Lab	38.6154, 5.5733, 13.1120

Details

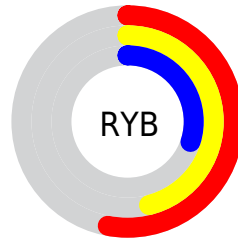
The XYZ color **15.8248, 14.9115, 9.0653** is a dark color, and the websafe version is hex **996666**. A complement of this color would be **12.9394, 14.4505, 24.6617**, and the grayscale version is **14.3273, 15.0734, 16.4150**.

A 20% lighter version of the original color is **35.7332, 34.6542, 24.5443**, and **5.1472, 4.5816, 1.9796** is the 20% darker color. If you saturate the color by 10%, you get **14.6817, 13.3060, 6.5856**, and if you desaturate by 10%, it is **17.1373, 16.6997, 12.0827**.

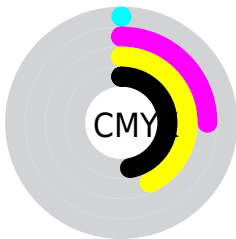
Distribution



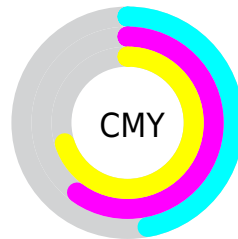
- Red (53%)
- Green (40%)
- Blue (30%)



- Red (53%)
- Yellow (46%)
- Blue (30%)



- Cyan (0%)
- Magenta (25%)
- Yellow (43%)
- Black (47%)



- Cyan (47%)
- Magenta (60%)
- Yellow (70%)

Brightness & Saturation Gradients

These gradients show how the XYZ color 15.8248, 14.9115, 9.0653 changes by changing the brightness by 10 percent. The first figure shows a shift by +10% for each color and the second figure -10%.

Similar to the brightness gradients but the following saturation gradients show a change of the XYZ color 15.8248, 14.9115, 9.0653 by changing the saturation by 10% instead.

■ 15.8248, 14.9115,
9.0653

■ 15.8248, 14.9115,
9.0653

221.5964,
222.8299, 194.1003

■ 9.4903, 8.7573,
4.6864

■ 35.8537, 34.6979,
24.6016

■ 5.1220, 4.5832,
2.0090

■ 50.2788, 49.0988,
36.5962

■ 2.3545, 2.0049,
0.5608

■ 68.1315, 67.0174,
51.9663

■ 0.8223, 0.6103,
0.0000

■ 89.7772, 88.8382,
71.1306

■ 0.0000, 0.0000,
0.0000

■ 115.5812,
114.9454, 94.5076

145.9088,

145.7235, 122.5159

181.1254,
181.5569, 155.5739

■ 15.8248, 14.9115,
9.0653

■ 15.8248, 14.9115,
9.0653

■ 14.6817, 13.3060,
6.5856

■ 17.1373, 16.6997,
12.0827

■ 13.6988, 11.8746,
4.6104

■ 18.6254, 18.6743,
15.6666

■ 12.8677, 10.6114,
3.1039

■ 20.2965, 20.8418,
19.8448

■ 12.1788, 9.5089,
2.0253

■ 22.1570, 23.2076,
24.6429

■ 11.6208, 8.5592,
1.3268

■ 24.2131, 25.7768,
30.0852

■ 11.2666, 7.9383,
0.9384

■ 26.4707, 28.5544,
36.1945

■ 28.9354, 31.5452,
42.9925

■ 31.6126, 34.7538,
50.5000

■ 34.5074, 38.1847,
58.7369

Harmonies

Analogous

The Analogous color harmony consists of three colors that are next to each other on the color wheel.



17.2521, 14.9115, 11.5966



15.8248, 14.9115, 9.0653



14.0502, 14.9115, 8.3225

Triad

The Triadic color harmony groups three colors that are evenly spaced from another and form a triangle on the color wheel.



15.8248, 14.9115, 9.0653



11.0407, 14.9115, 16.5911



16.0553, 14.9115, 25.9586

Complementary

The Complementary color scheme is a pair of colors which are on the opposite of each other on the color wheel.



15.8248, 14.9115, 9.0653



12.9394, 14.4505, 24.6617

Split Complementary

Split-complementary colors differ from the complementary color scheme. The scheme consists of three colors, the original color and two neighbors of the complement color.



14.2964, 14.9115, 28.0344



15.8248, 14.9115, 9.0653



11.4838, 14.9115, 21.9725

Square

The Square scheme is like the rectangle color scheme, but the four colors are evenly spaced on the color wheel.



15.8248, 14.9115, 9.0653



11.3772, 14.9115, 12.0912



12.6402, 14.9115, 26.4436



17.3928, 14.9115, 21.2340

Rectangle

The Rectangle color scheme consists of four colors that form a rectangle on the color wheel.



15.8248, 14.9115, 9.0653



12.9337, 14.9115, 8.7837



12.6402, 14.9115, 26.4436



15.4889, 14.9115, 27.0289

Sweetspot

The Sweet Spot groups the original color and five complimentary colors.



15.8252, 14.9122, 9.0656



35.5282, 36.4229, 34.3755



15.3137, 11.5075, 16.2375



7.8716, 8.0350, 7.4095



64.0503, 67.3860, 73.3833



8.9945, 9.4630, 10.3052

Same Dimension

The Same Dimension uses a secret algorithm to generate beautiful new colors.



15.8252, 14.9122, 9.0656



25.9453, 23.5548, 11.7663



19.0545, 21.3708, 10.1420



4.8218, 4.9872, 4.9379



10.5686, 7.4598, 0.8829



0.0436, 0.0398, 0.0054

Inverse Universe

The Inverse Universe completely reimagines the original color for something new.



12.9394, 14.4505, 24.6617



20.1516, 22.6159, 43.0416



10.3623, 9.2961, 23.8026



4.6416, 4.9589, 5.9133



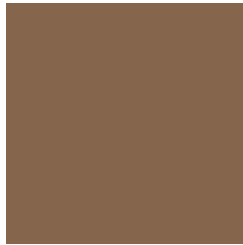
6.5681, 6.6841, 22.0807



0.0300, 0.0376, 0.0789

Previews

White Background



This preview shows how the XYZ color 15.8248, 14.9115, 9.0653 looks on a white background.

Color Contrast Check

Large Text (above 18pt) WCAG AA ✓ Pass

Any Text WCAG AA ✓ Pass

Large Text (above 18pt) WCAG AAA ✓ Pass

Any Text WCAG AAA × Fail

Black Background



This preview shows how the XYZ color 15.8248, 14.9115, 9.0653 looks on a black background.

Color Contrast Check

Large Text (above 18pt) WCAG AA ✓ Pass

Any Text WCAG AA × Fail

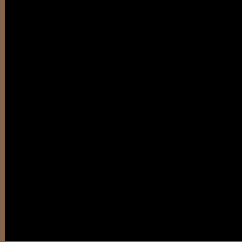
Large Text (above 18pt) WCAG AAA × Fail

Any Text WCAG AAA × Fail

If you want to check with other color combinations, try the [Color Contrast Checker](#).

XYZ 15.8248, 14.9115, 9.0653

Background



This preview shows how black text looks on a background with the XYZ color 15.8248, 14.9115, 9.0653.



This preview shows how white text looks on a background with the XYZ color 15.8248, 14.9115,

Color Blindness Simulation

Color vision deficiency is a very complex topic, and I could not describe the different causes any better than Wikipedia does, so if you want to learn more, you should check out their [article about color blindness](#).

Dichromacy



Original Color

15.8248, 14.9115, 9.0653

Protanopia

14.0130, 15.0173, 9.7495

Deuteranopia

15.0919, 14.8255, 9.0874



Tritanopia

17.1410, 14.8877, 15.3348

Trichromacy



Original Color

15.8248, 14.9115, 9.0653

Protanomaly

14.6312, 14.8786, 9.4978

Deuteranomaly

15.2968, 14.7844, 9.0686

Tritanomaly

16.5866, 14.7958, 12.8081

Monochromacy



Original Color

15.8248, 14.9115, 9.0653

Achromatopsia

14.2537, 14.9960, 16.3306

Achromatomaly

14.5454, 14.7481, 13.3893

CSS Examples

Text

The CSS property to change the color of the text to XYZ 15.8248, 14.9115, 9.0653 is called "color". The color property can be set on classes, ids or directly on the HTML element.

This example shows how text in the color `rgb(134, 101, 77)` looks like.

```
.text, #text, p{  
    color:rgb(134, 101, 77)  
}
```

If you want to add a text shadow in that color use the text-shadow property, you can generate a text shadow directly with our [CSS Text Shadow Generator](#).

Here you see how black text with a 4 pixel rgb(134, 101, 77) colored shadow looks like.

```
.shadow{ text-shadow: 4px 4px 2px rgb(134, 101, 77) }
```

Border

The CSS property to change the border of an element to XYZ 15.8248, 14.9115, 9.0653 is called "border". The border property can be set on classes, ids or directly on the HTML element.

This example shows the color as border, it can be applied via the CSS property "border" or "border-color".

```
.border, #border, table{ border:4px solid rgb(134, 101, 77) }
```


If only the border color should be changed use the property border-color.

```
.border{ border-color:rgb(134, 101, 77) }
```

If you want to add a box shadow in that color use:

Here you see how a box with a 4 pixel rgb(134, 101, 77) colored shadow looks like.

```
.boxshadow{ -moz-box-shadow:4px 4px 4px  
4px rgb(134, 101, 77); -webkit-box-  
shadow:4px 4px 4px 4px rgb(134, 101, 77);  
box-shadow:4px 4px 4px 4px rgb(134, 101,  
77) }
```

Background

The CSS property to change the background color of an element to XYZ 15.8248, 14.9115, 9.0653 is called "background". The background property can be set on classes, ids or directly on the HTML element.

```
.background, #background, body{  
background: rgb(134, 101, 77) }
```

If only the background color should be changed can be used:

```
.background{ background-color: rgb(134,  
101, 77) }
```

This example shows the color as background, it is applied via the CSS property "background".

To optimize and compress your CSS code, you can use our [online CSS compressor and optimizer](#) based on csstidy. If you want to create a linear or radial gradient as background or border, check our [CSS Gradient Generator](#).

Hey! You found this booklet interesting? Support Converting Colors with the new Membership Option!

The pro membership hides all ads, plus gives you double the colors in the color bucket, and more awesome pro features!

[Learn more, Memberships starting at \\$2.50/m!](#)

**Follow me
on Twitter!**

@ConvertingColor