

Converting Colors

XYZ(16.3018, 15.1444, 16.3324)

Have a look what the booklet for
XYZ(16.3018, 15.1444, 16.3324)
contains.

XYZ(16.3602, 15.1746, 16.2541)	3
<i>Conversions</i>	4
<i>Details</i>	6
<i>Harmonies</i>	12
<i>Previews</i>	24
<i>Color Blindness Simulation</i>	28
<i>CSS Examples</i>	31

Color

**XYZ(16.3602, 15.1746,
16.2541)**

Conversions

Conversions Part 1

Format	Color
Hex	80666C
RGB	128, 102, 108
RGB Percent	50%, 40%, 42%
CMY	0.4980, 0.6000, 0.5765
CMYK	0.00, 0.20, 0.16, 0.50
HSL	346°, 11%, 45%
HSV	346°, 20%, 50%
XYZ	16.3602, 15.1746, 16.2541
YIQ	110.4580, 13.5700, 7.3780

Conversions

Conversions Part 2

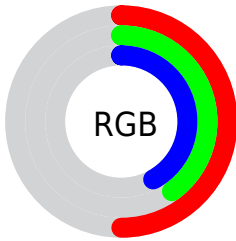
Format	Color
R_{YB}	128, 102, 108
Decimal	8414828
CIE Lab	45.87, 11.44, 0.58
CIE LCh	46, 11.457, 2.906
Yxy	15.1746, 0.3423, 0.3175
Android (android.graphics.Color)	4286604908 (0xFF80666C)
YUV	110.4580, -1.2118, 15.3843
Hunter-Lab	38.9546, 6.7961, 2.5290

Details

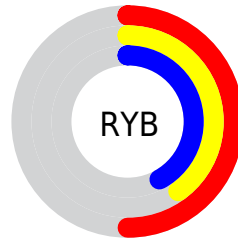
The XYZ color **16.3602, 15.1746, 16.2541** is a dark color, and the websafe version is hex **666666**. A complement of this color would be **16.7121, 19.6686, 21.3288**, and the grayscale version is **14.9536, 15.7324, 17.1326**.

A 20% lighter version of the original color is **36.7053, 35.1094, 37.6431**, and **5.3504, 4.6890, 5.0380** is the 20% darker color. If you saturate the color by 10%, you get **14.7033, 12.6526, 13.2606**, and if you desaturate by 10%, it is **18.2714, 18.1102, 19.6248**.

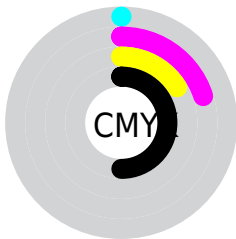
Distribution



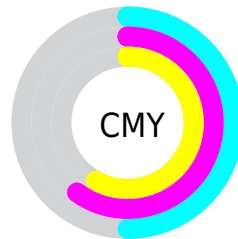
- Red (50%)
- Green (40%)
- Blue (42%)



- Red (50%)
- Yellow (40%)
- Blue (42%)



- Cyan (0%)
- Magenta (20%)
- Yellow (16%)
- Black (50%)



- Cyan (50%)
- Magenta (60%)
- Yellow (58%)

Brightness & Saturation Gradients

These gradients show how the XYZ color 16.3602, 15.1746, 16.2541 changes by changing the brightness by 10 percent. The first figure shows a shift by +10% for each color and the second figure -10%.

Similar to the brightness gradients but the following saturation gradients show a change of the XYZ color 16.3602, 15.1746, 16.2541 by changing the saturation by 10% instead.

■ 16.3602, 15.1746,
16.2541

■ 16.3602, 15.1746,
16.2541

224.6867,
224.4206, 242.7332

■ 9.8719, 8.9420,
9.5478

■ 36.7748, 35.1592,
37.8117

■ 5.3757, 4.7034,
4.9985

■ 51.4318, 49.6800,
53.5001

■ 2.5063, 2.0743,
2.1877

■ 69.5424, 67.7323,
73.0196

■ 0.8985, 0.6501,
0.6672

■ 91.4720, 89.7005,
96.7888

■ 0.0000, 0.0000,
0.0000

117.5858,
115.9691, 125.2262

148.2493,

146.9224, 158.7504

183.8278,
182.9447, 197.7799

■ 16.3602, 15.1746,
16.2541

■ 16.3602, 15.1746,
16.2541

■ 14.7033, 12.6526,
13.2606

■ 18.2714, 18.1102,
19.6248

■ 13.2886, 10.5235,
10.6302

■ 20.4459, 21.4747,
23.3843

■ 12.1049, 8.7681,
8.3489

■ 22.8936, 25.2851,
27.5451

■ 11.1396, 7.3646,
6.4018

■ 25.6237, 29.5571,
32.1185

■ 10.3787, 6.2890,
4.7728

■ 28.6449, 34.3052,
37.1157

■ 9.8068, 5.5143,
3.4443

■ 31.9655, 39.5437,
42.5472

■ 9.4060, 5.0090,
2.3968

■ 35.5936, 45.2860,
48.4232

■ 9.1305, 4.6806,
1.6193

■ 39.5367, 51.5452,
54.7537

■ 43.8024, 58.3338,
61.5483

Harmonies

Analogous

The Analogous color harmony consists of three colors that are next to each other on the color wheel.



16.1419, 15.1746, 19.0676



16.3602, 15.1746, 16.2541



16.0405, 15.1746, 13.7959

Triad

The Triadic color harmony groups three colors that are evenly spaced from another and form a triangle on the color wheel.



16.3602, 15.1746, 16.2541



13.4366, 15.1746, 12.4441



13.5929, 15.1746, 21.7294

Complementary

The Complementary color scheme is a pair of colors which are on the opposite of each other on the color wheel.



16.3602, 15.1746, 16.2541



16.7121, 19.6686, 21.3288

Split Complementary

Split-complementary colors differ from the complementary color scheme. The scheme consists of three colors, the original color and two neighbors of the complement color.



12.9180, 15.1746, 19.5867



16.3602, 15.1746, 16.2541



12.8307, 15.1746, 14.2147

Square

The Square scheme is like the rectangle color scheme, but the four colors are evenly spaced on the color wheel.



16.3602, 15.1746, 16.2541



14.3290, 15.1746, 11.7558



12.6451, 15.1746, 16.7940



14.5175, 15.1746, 22.4298

Rectangle

The Rectangle color scheme consists of four colors that form a rectangle on the color wheel.



16.3602, 15.1746, 16.2541



15.5734, 15.1746, 12.6297



12.6451, 15.1746, 16.7940



13.3307, 15.1746, 21.1430

Sweetspot

The Sweet Spot groups the original color and five complimentary colors.



16.3606, 15.1753, 16.2544



33.7094, 34.2636, 37.2295



16.6647, 15.1946, 22.4767



7.8464, 7.9510, 8.6369



62.3462, 65.5931, 71.4309



8.4577, 8.8982, 9.6901

Same Dimension

The Same Dimension uses a secret algorithm to generate beautiful new colors.



16.3606, 15.1753, 16.2544



27.5141, 24.7475, 26.3028



16.7623, 16.4721, 14.8671



4.3653, 4.3593, 4.7281



9.0540, 4.6413, 1.6082



0.0000, 0.0000, 0.0000

Inverse Universe

The Inverse Universe completely reimagines the original color for something new.



16.3606, 15.1753, 16.2544



27.5141, 24.7475, 26.3028



16.2217, 18.0747, 23.0560



4.3653, 4.3593, 4.7281



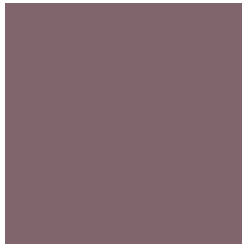
9.0540, 4.6413, 1.6082



0.0000, 0.0000, 0.0000

Previews

White Background



This preview shows how the XYZ color 16.3602, 15.1746, 16.2541 looks on a white background.

Color Contrast Check

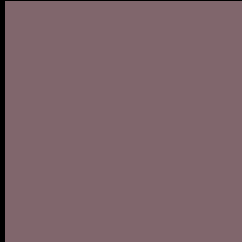
Large Text (above 18pt) WCAG AA ✓ Pass

Any Text WCAG AA ✓ Pass

Large Text (above 18pt) WCAG AAA ✓ Pass

Any Text WCAG AAA × Fail

Black Background



This preview shows how the XYZ color 16.3602, 15.1746, 16.2541 looks on a black background.

Color Contrast Check

Large Text (above 18pt) WCAG AA ✓ Pass

Any Text WCAG AA ✗ Fail

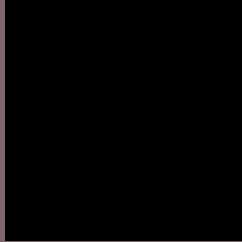
Large Text (above 18pt) WCAG AAA ✗ Fail

Any Text WCAG AAA ✗ Fail

If you want to check with other color combinations, try the [Color Contrast Checker](#).

XYZ 16.3602, 15.1746, 16.2541

Background



This preview shows how black text looks on a background with the XYZ color 16.3602, 15.1746, 16.2541.



This preview shows how white text looks on a background with the XYZ color 16.3602, 15.1746,

Color Blindness Simulation

Color vision deficiency is a very complex topic, and I could not describe the different causes any better than Wikipedia does, so if you want to learn more, you should check out their [article about color blindness](#).

Dichromacy



Original Color

16.3602, 15.1746, 16.2541

Protanopia

14.7176, 15.2100, 17.4894

Deuteranopia

15.4511, 15.1578, 16.0213



Tritanopia

16.4679, 15.2177, 16.8212

Trichromacy



Original Color

16.3602, 15.1746, 16.2541

Protanomaly

15.3594, 15.2377, 17.1706

Deuteranomaly

15.7725, 15.1731, 16.0073

Tritanomaly

16.4138, 15.1961, 16.5360

Monochromacy



Original Color

16.3602, 15.1746, 16.2541

Achromatopsia

14.8208, 15.5926, 16.9804

Achromatomaly

15.3541, 15.4014, 16.6315

CSS Examples

Text

The CSS property to change the color of the text to XYZ 16.3602, 15.1746, 16.2541 is called "color". The color property can be set on classes, ids or directly on the HTML element.

This example shows how text in the color `rgb(128, 102, 108)` looks like.

```
.text, #text, p{  
    color:rgb(128, 102, 108)  
}
```

If you want to add a text shadow in that color use the text-shadow property, you can generate a text shadow directly with our [CSS Text Shadow Generator](#).

Here you see how black text with a 4 pixel rgb(128, 102, 108) colored shadow looks like.

```
.shadow{ text-shadow: 4px 4px 2px rgb(128, 102, 108) }
```

Border

The CSS property to change the border of an element to XYZ 16.3602, 15.1746, 16.2541 is called "border". The border property can be set on classes, ids or directly on the HTML element.

This example shows the color as border, it can be applied via the CSS property "border" or "border-color".

```
.border, #border, table{ border:4px solid rgb(128, 102, 108) }
```


If only the border color should be changed use the property `border-color`.

```
.border{ border-color:rgb(128, 102, 108) }
```

If you want to add a box shadow in that color use:

Here you see how a box with a 4 pixel `rgb(128, 102, 108)` colored shadow looks like.

```
.boxshadow{ -moz-box-shadow:4px 4px 4px  
4px rgb(128, 102, 108); -webkit-box-  
shadow:4px 4px 4px 4px rgb(128, 102, 108);  
box-shadow:4px 4px 4px 4px rgb(128, 102,  
108) }
```

Background

The CSS property to change the background color of an element to XYZ 16.3602, 15.1746, 16.2541 is called "background". The background property can be set on classes, ids or directly on the HTML element.

```
.background, #background, body{  
background: rgb(128, 102, 108) }
```

If only the background color should be changed can be used:

```
.background{ background-color: rgb(128,  
102, 108) }
```

This example shows the color as background, it is applied via the CSS property "background".

To optimize and compress your CSS code, you can use our [online CSS compressor and optimizer](#) based on csstidy. If you want to create a linear or radial gradient as background or border, check our [CSS Gradient Generator](#).

Hey! You found this booklet interesting? Support Converting Colors with the new Membership Option!

The pro membership hides all ads, plus gives you double the colors in the color bucket, and more awesome pro features!

[Learn more, Memberships starting at \\$2.50/m!](#)

**Follow me
on Twitter!**

@ConvertingColor