

Converting Colors

XYZ(16.5003, 16.0598, 14.8006)

Have a look what the booklet for
XYZ(16.5003, 16.0598, 14.8006)
contains.

XYZ(16.5581, 16.0639, 14.7983)	3
<i>Conversions</i>	4
<i>Details</i>	6
<i>Harmonies</i>	12
<i>Previews</i>	24
<i>Color Blindness Simulation</i>	28
<i>CSS Examples</i>	31

Color

**XYZ(16.5581, 16.0639,
14.7983)**

Conversions

Conversions Part 1

Format	Color
Hex	806B66
RGB	128, 107, 102
RGB Percent	50%, 42%, 40%
CMY	0.4980, 0.5804, 0.6000
CMYK	0.00, 0.16, 0.20, 0.50
HSL	12°, 11%, 45%
HSV	12°, 20%, 50%
XYZ	16.5581, 16.0639, 14.7983
YIQ	112.7090, 14.1210, 2.8970

Conversions

Conversions Part 2

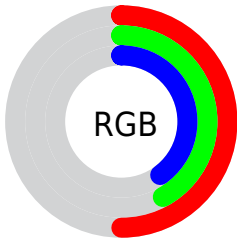
Format	Color
R_{YB}	128, 108, 102
Decimal	8416102
CIE Lab	47.06, 7.45, 5.89
CIE LCh	47, 9.497, 38.349
Yxy	16.0639, 0.3492, 0.3388
Android (android.graphics.Color)	4286606182 (0xFF806B66)
YUV	112.7090, -5.2795, 13.4102
Hunter-Lab	40.0798, 3.6038, 6.1647

Details

The XYZ color **16.5581, 16.0639, 14.7983** is a dark color, and the websafe version is hex **666666**. A complement of this color would be **16.4587, 18.5489, 23.1352**, and the grayscale version is **15.6224, 16.4360, 17.8988**.

A 20% lighter version of the original color is **37.0327, 36.5774, 35.2453**, and **5.4473, 5.1273, 4.3170** is the 20% darker color. If you saturate the color by 10%, you get **14.9577, 13.8017, 11.3711**, and if you desaturate by 10%, it is **18.3863, 18.6246, 18.7855**.

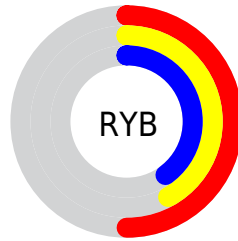
Distribution



Red (50%)

Green (42%)

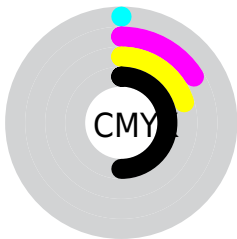
Blue (40%)



Red (50%)

Yellow (42%)

Blue (40%)

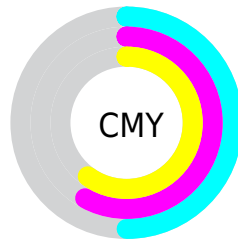


Cyan (0%)

Magenta (16%)

Yellow (20%)

Black (50%)



Cyan (50%)

Magenta (58%)

Yellow (60%)

Brightness & Saturation Gradients

These gradients show how the XYZ color 16.5581, 16.0639, 14.7983 changes by changing the brightness by 10 percent. The first figure shows a shift by +10% for each color and the second figure -10%.

Similar to the brightness gradients but the following saturation gradients show a change of the XYZ color 16.5581, 16.0639, 14.7983 by changing the saturation by 10% instead.

■ 16.5581, 16.0639,
14.7983

■ 16.5581, 16.0639,
14.7983

225.8190,
229.7185, 233.7407

■ 10.0133, 9.5694,
8.5329

■ 37.1141, 36.7091,
35.2362

■ 5.4701, 5.1144,
4.3452

■ 51.8560, 51.6286,
50.2458

■ 2.5632, 2.3145,
1.8165

■ 70.0609, 70.1252,
69.0073

■ 0.9272, 0.7814,
0.4388

■ 92.0943, 92.5832,
91.9391

■ 0.0000, 0.0000,
0.0000

118.3214,
119.3872, 119.4598

149.1077,

150.9215, 151.9879

184.8184,
187.5704, 189.9420

■ 16.5581, 16.0639,
14.7983

■ 16.5581, 16.0639,
14.7983

■ 14.9577, 13.8017,
11.3711

■ 18.3863, 18.6246,
18.7855

■ 13.5748, 11.8248,
8.4777

■ 20.4495, 21.4917,
23.3551

■ 12.4001, 10.1225,
6.0914

■ 22.7561, 24.6759,
28.5298

■ 11.4234, 8.6826,
4.1828

■ 25.3139, 28.1864,
34.3305

■ 10.6333, 7.4917,
2.7194

■ 28.1301, 32.0322,
40.7772

■ 10.0174, 6.5355,
1.6646

■ 31.2118, 36.2220,
47.8890

■ 9.5616, 5.7979,
0.9760

■ 34.5658, 40.7639,
55.6843

■ 9.2419, 5.2687,
0.5299

■ 38.1985, 45.6661,
64.1807

■ 42.1162, 50.9363,
73.3950

Harmonies

Analogous

The Analogous color harmony consists of three colors that are next to each other on the color wheel.



16.9071, 16.0639, 16.8337



16.5581, 16.0639, 14.7983



15.8664, 16.0639, 13.5672

Triad

The Triadic color harmony groups three colors that are evenly spaced from another and form a triangle on the color wheel.



16.5581, 16.0639, 14.7983



13.8285, 16.0639, 15.8537



15.5018, 16.0639, 22.4291

Complementary

The Complementary color scheme is a pair of colors which are on the opposite of each other on the color wheel.



16.5581, 16.0639, 14.7983



16.4587, 18.5489, 23.1352

Split Complementary

Split-complementary colors differ from the complementary color scheme. The scheme consists of three colors, the original color and two neighbors of the complement color.



14.6854, 16.0639, 22.1063



16.5581, 16.0639, 14.7983



13.7389, 16.0639, 18.1649

Square

The Square scheme is like the rectangle color scheme, but the four colors are evenly spaced on the color wheel.



16.5581, 16.0639, 14.7983



14.2966, 16.0639, 14.1369



14.0472, 16.0639, 20.4917



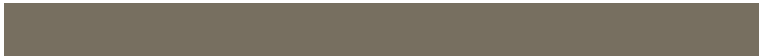
16.2829, 16.0639, 21.3373

Rectangle

The Rectangle color scheme consists of four colors that form a rectangle on the color wheel.



16.5581, 16.0639, 14.7983



15.3144, 16.0639, 13.2976



14.0472, 16.0639, 20.4917



15.2222, 16.0639, 22.4842

Sweetspot

The Sweet Spot groups the original color and five complimentary colors.



16.5585, 16.0646, 14.7986



33.8366, 34.8315, 36.3057



17.2435, 15.5281, 20.9042



7.8785, 8.0943, 8.4037



62.3462, 65.5931, 71.4309



8.4577, 8.8982, 9.6901

Same Dimension

The Same Dimension uses a secret algorithm to generate beautiful new colors.



16.5585, 16.0646, 14.7986



27.9107, 26.5319, 23.3786



17.9890, 18.9256, 15.2755



4.3896, 4.4679, 4.5512



9.1647, 5.2259, 0.5257



0.0000, 0.0000, 0.0000

Inverse Universe

The Inverse Universe completely reimagines the original color for something new.



16.4587, 18.5489, 23.1352



27.7031, 31.6640, 40.6079



14.9771, 15.5858, 22.6413



4.3783, 4.7507, 5.4995



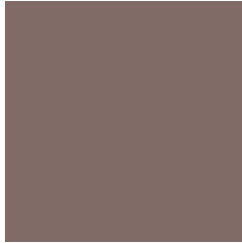
8.7106, 11.2397, 21.9603



0.0000, 0.0000, 0.0000

Previews

White Background



This preview shows how the XYZ color 16.5581, 16.0639, 14.7983 looks on a white background.

Color Contrast Check

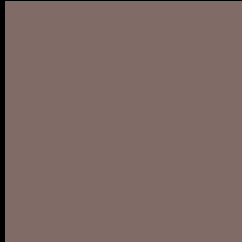
Large Text (above 18pt) WCAG AA ✓ Pass

Any Text WCAG AA ✓ Pass

Large Text (above 18pt) WCAG AAA ✓ Pass

Any Text WCAG AAA × Fail

Black Background



This preview shows how the XYZ color 16.5581, 16.0639, 14.7983 looks on a black background.

Color Contrast Check

Large Text (above 18pt) WCAG AA ✓ Pass

Any Text WCAG AA × Fail

Large Text (above 18pt) WCAG AAA × Fail

Any Text WCAG AAA × Fail

If you want to check with other color combinations, try the [Color Contrast Checker](#).

XYZ 16.5581, 16.0639, 14.7983

Background



This preview shows how black text looks on a background with the XYZ color 16.5581, 16.0639, 14.7983.

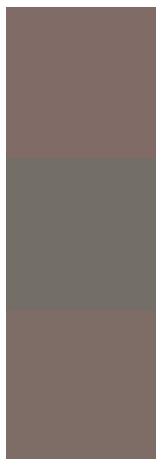


This preview shows how white text looks on a background with the XYZ color 16.5581, 16.0639,

Color Blindness Simulation

Color vision deficiency is a very complex topic, and I could not describe the different causes any better than Wikipedia does, so if you want to learn more, you should check out their [article about color blindness](#).

Dichromacy



Original Color

16.5581, 16.0639, 14.7983

Protanopia

15.2534, 16.0132, 15.3836

Deuteranopia

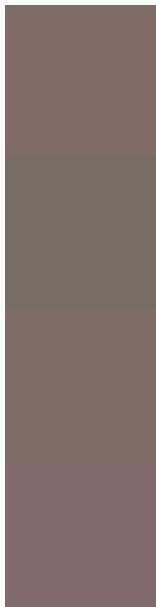
16.3650, 16.1201, 14.8193



Tritanopia

17.0855, 15.9625, 17.8034

Trichromacy



Original Color

16.5581, 16.0639, 14.7983

Protanomaly

15.7698, 16.1242, 15.1131

Deuteranomaly

16.5132, 16.1965, 14.8263

Tritanomaly

16.9676, 16.0793, 16.6773

Monochromacy



Original Color

16.5581, 16.0639, 14.7983

Achromatopsia

15.6958, 16.5132, 17.9829

Achromatomaly

15.9160, 16.3246, 16.7801

CSS Examples

Text

The CSS property to change the color of the text to XYZ 16.5581, 16.0639, 14.7983 is called "color". The color property can be set on classes, ids or directly on the HTML element.

This example shows how text in the color `rgb(128, 107, 102)` looks like.

```
.text, #text, p{  
    color:rgb(128, 107, 102)  
}
```

If you want to add a text shadow in that color use the text-shadow property, you can generate a text shadow directly with our [CSS Text Shadow Generator](#).

Here you see how black text with a 4 pixel rgb(128, 107, 102) colored shadow looks like.

```
.shadow{ text-shadow: 4px 4px 2px rgb(128, 107, 102) }
```

Border

The CSS property to change the border of an element to XYZ 16.5581, 16.0639, 14.7983 is called "border". The border property can be set on classes, ids or directly on the HTML element.

This example shows the color as border, it can be applied via the CSS property "border" or "border-color".

```
.border, #border, table{ border:4px solid rgb(128, 107, 102) }
```


If only the border color should be changed use the property border-color.

```
.border{ border-color:rgb(128, 107, 102) }
```

If you want to add a box shadow in that color use:

Here you see how a box with a 4 pixel rgb(128, 107, 102) colored shadow looks like.

```
.boxshadow{ -moz-box-shadow:4px 4px 4px  
4px rgb(128, 107, 102); -webkit-box-  
shadow:4px 4px 4px 4px rgb(128, 107, 102);  
box-shadow:4px 4px 4px 4px rgb(128, 107,  
102) }
```

Background

The CSS property to change the background color of an element to XYZ 16.5581, 16.0639, 14.7983 is called "background". The background property can be set on classes, ids or directly on the HTML element.

```
.background, #background, body{  
background: rgb(128, 107, 102) }
```

If only the background color should be changed can be used:

```
.background{ background-color: rgb(128,  
107, 102) }
```

This example shows the color as background, it is applied via the CSS property "background".

To optimize and compress your CSS code, you can use our [online CSS compressor and optimizer](#) based on csstidy. If you want to create a linear or radial gradient as background or border, check our [CSS Gradient Generator](#).

Hey! You found this booklet interesting? Support Converting Colors with the new Membership Option!

The pro membership hides all ads, plus gives you double the colors in the color bucket, and more awesome pro features!

[Learn more, Memberships starting at \\$2.50/m!](#)

**Follow me
on Twitter!**

@ConvertingColor