

Converting Colors

XYZ(16.9022, 14.7372, 8.3465)

Have a look what the booklet for
XYZ(16.9022, 14.7372, 8.3465)
contains.

XYZ(16.9205, 14.7894, 8.4414)	3
<i>Conversions</i>	4
<i>Details</i>	6
<i>Harmonies</i>	12
<i>Previews</i>	24
<i>Color Blindness Simulation</i>	28
<i>CSS Examples</i>	31

Color

**XYZ(16.9205, 14.7894,
8.4414)**

Conversions

Conversions Part 1

Format	Color
Hex	90604A
RGB	144, 96, 74
RGB Percent	56%, 38%, 29%
CMY	0.4353, 0.6235, 0.7098
CMYK	0.00, 0.33, 0.49, 0.44
HSL	19°, 32%, 43%
HSV	19°, 49%, 56%
XYZ	16.9205, 14.7894, 8.4414
YIQ	107.8440, 35.6700, 3.3340

Conversions

Conversions Part 2

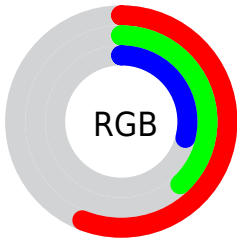
Format	Color
RYB	144, 106, 74
Decimal	9461834
CIELab	45.34, 16.86, 20.49
CIELCh	45, 26.530, 50.549
Yxy	14.7894, 0.4214, 0.3683
Android (android.graphics.Color)	4287651914 (0xFF90604A)
YUV	107.8440, -16.6851, 31.7088
Hunter-Lab	38.4570, 11.2376, 13.9056

Details

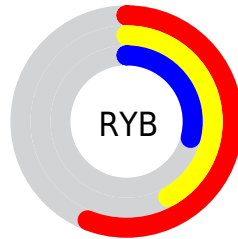
The XYZ color **16.9205, 14.7894, 8.4414** is a dark color, and the websafe version is hex **996666**. A complement of this color would be **14.8174, 17.3879, 28.9608**, and the grayscale version is **14.2487, 14.9907, 16.3249**.

A 20% lighter version of the original color is **37.8283, 34.5769, 23.4191**, and **5.6470, 4.5145, 1.8021** is the 20% darker color. If you saturate the color by 10%, you get **15.6449, 12.9277, 5.8906**, and if you desaturate by 10%, it is **18.4211, 16.9233, 11.6155**.

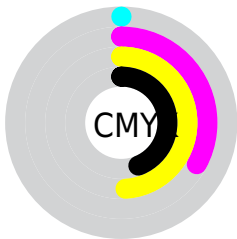
Distribution



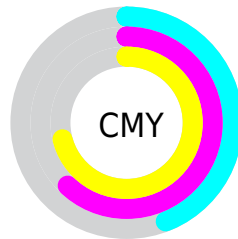
- Red (56%)
- Green (38%)
- Blue (29%)



- Red (56%)
- Yellow (42%)
- Blue (29%)



- Cyan (0%)
- Magenta (33%)
- Yellow (49%)
- Black (44%)



- Cyan (44%)
- Magenta (62%)
- Yellow (71%)

Brightness & Saturation Gradients

These gradients show how the XYZ color 16.9205, 14.7894, 8.4414 changes by changing the brightness by 10 percent. The first figure shows a shift by +10% for each color and the second figure -10%.

Similar to the brightness gradients but the following saturation gradients show a change of the XYZ color 16.9205, 14.7894, 8.4414 by changing the saturation by 10% instead.

■ 16.9205, 14.7894,
8.4414

■ 16.9205, 14.7894,
8.4414

227.8790,
222.0880, 189.2163

■ 10.2728, 8.6717,
4.2869

■ 37.7337, 34.4833,
23.3796

■ 5.6438, 4.5277,
1.7840

■ 52.6299, 48.8283,
35.0004

■ 2.6683, 1.9729,
0.4174

■ 71.0064, 66.6845,
49.9470

■ 0.9809, 0.5917,
0.0000

■ 93.2283, 88.4364,
68.6380

■ 0.0000, 0.0000,
0.0000

■ 119.6612,
114.4683, 91.4918

150.6704,

145.1646, 118.9271

186.6212,
180.9097, 151.3624

■ 16.9205, 14.7894,
8.4414

■ 16.9205, 14.7894,
8.4414

■ 15.6449, 12.9277,
5.8906

■ 18.4211, 16.9233,
11.6155

■ 14.5813, 11.3246,
3.9203

■ 20.1565, 19.3380,
15.4499

■ 13.7170, 9.9685,
2.4838

■ 22.1373, 22.0443,
19.9798

■ 13.0371, 8.8459,
1.5264

■ 24.3729, 25.0517,
25.2378

■ 12.5146, 7.9377,
0.9300

■ 26.8723, 28.3693,
31.2540

■ 12.4501, 7.8262,
0.8544

■ 29.6442, 32.0060,
38.0573

■ 32.6966, 35.9700,
45.6746

■ 36.0373, 40.2694,
54.1319

■ 39.6739, 44.9120,
63.4540

Harmonies

Analogous

The Analogous color harmony consists of three colors that are next to each other on the color wheel.



18.4028, 14.7894, 12.2131



16.9205, 14.7894, 8.4414



14.7631, 14.7894, 6.8635

Triad

The Triadic color harmony groups three colors that are evenly spaced from another and form a triangle on the color wheel.



16.9205, 14.7894, 8.4414



10.2826, 14.7894, 14.1943



15.5950, 14.7894, 30.3238

Complementary

The Complementary color scheme is a pair of colors which are on the opposite of each other on the color wheel.



16.9205, 14.7894, 8.4414



14.8174, 17.3879, 28.9608

Split Complementary

Split-complementary colors differ from the complementary color scheme. The scheme consists of three colors, the original color and two neighbors of the complement color.



13.3735, 14.7894, 31.2582



16.9205, 14.7894, 8.4414



10.4555, 14.7894, 20.7422

Square

The Square scheme is like the rectangle color scheme, but the four colors are evenly spaced on the color wheel.



16.9205, 14.7894, 8.4414



11.0362, 14.7894, 9.5653



11.5361, 14.7894, 27.3897



17.5838, 14.7894, 25.0955

Rectangle

The Rectangle color scheme consists of four colors that form a rectangle on the color wheel.



16.9205, 14.7894, 8.4414



13.2964, 14.7894, 6.8863



11.5361, 14.7894, 27.3897



14.8459, 14.7894, 31.1955

Sweetspot

The Sweet Spot groups the original color and five complimentary colors.



16.9209, 14.7901, 8.4417



40.2968, 40.5734, 38.1581



17.5256, 12.2570, 20.1811



9.0754, 9.0808, 8.3637



69.3244, 72.9347, 79.4259



10.7221, 11.2805, 12.2844

Same Dimension

The Same Dimension uses a secret algorithm to generate beautiful new colors.



16.9209, 14.7901, 8.4417



27.4753, 22.6255, 10.1612



20.7203, 22.3890, 9.7082



5.5386, 5.6835, 5.6945



10.8610, 6.8536, 0.7504



0.1219, 0.1016, 0.0132

Inverse Universe

The Inverse Universe completely reimagines the original color for something new.



14.8174, 17.3879, 28.9608



23.2986, 27.7046, 50.6576



11.3479, 10.4491, 27.8043



5.4192, 5.8342, 6.8693



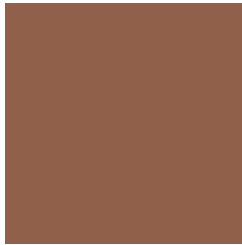
8.2691, 9.5241, 24.3796



0.0988, 0.1306, 0.2397

Previews

White Background



This preview shows how the XYZ color 16.9205, 14.7894, 8.4414 looks on a white background.

Color Contrast Check

Large Text (above 18pt) WCAG AA ✓ Pass

Any Text WCAG AA ✓ Pass

Large Text (above 18pt) WCAG AAA ✓ Pass

Any Text WCAG AAA × Fail

Black Background



This preview shows how the XYZ color 16.9205, 14.7894, 8.4414 looks on a black background.

Color Contrast Check

Large Text (above 18pt) WCAG AA ✓ Pass

Any Text WCAG AA × Fail

Large Text (above 18pt) WCAG AAA × Fail

Any Text WCAG AAA × Fail

If you want to check with other color combinations, try the [Color Contrast Checker](#).

XYZ 16.9205, 14.7894, 8.4414

Background



This preview shows how black text looks on a background with the XYZ color 16.9205, 14.7894, 8.4414.



This preview shows how white text looks on a background with the XYZ color 16.9205, 14.7894,

8.4414.

Color Blindness Simulation

Color vision deficiency is a very complex topic, and I could not describe the different causes any better than Wikipedia does, so if you want to learn more, you should check out their [article about color blindness](#).

Dichromacy



Original Color

16.9205, 14.7894, 8.4414

Protanopia

13.9763, 15.0026, 9.5563

Deuteranopia

15.1061, 14.8487, 8.3732



Tritanopia

18.0687, 14.8598, 13.9725

Trichromacy



Original Color

16.9205, 14.7894, 8.4414

Protanomaly

14.8941, 14.8721, 9.1068

Deuteranomaly

15.5913, 14.6637, 8.3120

Tritanomaly

17.5681, 14.7805, 11.8245

Monochromacy



Original Color

16.9205, 14.7894, 8.4414

Achromatopsia

14.2537, 14.9960, 16.3306

Achromatomaly

14.9468, 14.8101, 13.1372

CSS Examples

Text

The CSS property to change the color of the text to XYZ 16.9205, 14.7894, 8.4414 is called "color". The color property can be set on classes, ids or directly on the HTML element.

This example shows how text in the color `rgb(144, 96, 74)` looks like.

```
.text, #text, p{  
    color:rgb(144, 96, 74)  
}
```

If you want to add a text shadow in that color use the text-shadow property, you can generate a text shadow directly with our [CSS Text Shadow Generator](#).

Here you see how black text with a 4 pixel rgb(144, 96, 74) colored shadow looks like.

```
.shadow{ text-shadow: 4px 4px 2px rgb(144, 96, 74) }
```

Border

The CSS property to change the border of an element to XYZ 16.9205, 14.7894, 8.4414 is called "border". The border property can be set on classes, ids or directly on the HTML element.

This example shows the color as border, it can be applied via the CSS property "border" or "border-color".

```
.border, #border, table{ border:4px solid rgb(144, 96, 74) }
```


If only the border color should be changed use the property `border-color`.

```
.border{ border-color:rgb(144, 96, 74) }
```

If you want to add a box shadow in that color use:

Here you see how a box with a 4 pixel `rgb(144, 96, 74)` colored shadow looks like.

```
.boxshadow{ -moz-box-shadow:4px 4px 4px  
4px rgb(144, 96, 74); -webkit-box-  
shadow:4px 4px 4px 4px rgb(144, 96, 74);  
box-shadow:4px 4px 4px 4px rgb(144, 96,  
74) }
```

Background

The CSS property to change the background color of an element to XYZ 16.9205, 14.7894, 8.4414 is called "background". The background property can be set on classes, ids or directly on the HTML element.

```
.background, #background, body{  
background: rgb(144, 96, 74) }
```

If only the background color should be changed can be used:

```
.background{ background-color: rgb(144, 96,  
74) }
```

This example shows the color as background, it is applied via the CSS property "background".

To optimize and compress your CSS code, you can use our [online CSS compressor and optimizer](#) based on csstidy. If you want to create a linear or radial gradient as background or border, check our [CSS Gradient Generator](#).

Hey! You found this booklet interesting? Support Converting Colors with the new Membership Option!

The pro membership hides all ads, plus gives you double the colors in the color bucket, and more awesome pro features!

[Learn more, Memberships starting at \\$2.50/m!](#)

**Follow me
on Twitter!**

@ConvertingColor