

Converting Colors

XYZ(17.8610, 16.1594, 9.7018)

Have a look what the booklet for
XYZ(17.8610, 16.1594, 9.7018)
contains.

XYZ(17.8764, 16.1017, 9.7552)	3
<i>Conversions</i>	4
<i>Details</i>	6
<i>Harmonies</i>	12
<i>Previews</i>	24
<i>Color Blindness Simulation</i>	28
<i>CSS Examples</i>	31

Color

**XYZ(17.8764, 16.1017,
9.7552)**

Conversions

Conversions Part 1

Format	Color
Hex	916650
RGB	145, 102, 80
RGB Percent	57%, 40%, 31%
CMY	0.4314, 0.6000, 0.6863
CMYK	0.00, 0.30, 0.45, 0.43
HSL	20°, 29%, 44%
HSV	20°, 45%, 57%
XYZ	17.8764, 16.1017, 9.7552
YIQ	112.3490, 32.6900, 2.2740

Conversions

Conversions Part 2

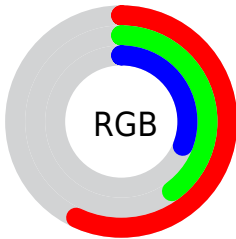
Format	Color
R_{YB}	145, 113, 80
Decimal	9528912
CIE _{Lab}	47.11, 14.46, 19.31
CIE _{LCh}	47, 24.125, 53.182
Yxy	16.1017, 0.4088, 0.3682
Android (android.graphics.Color)	4287718992 (0xFF916650)
YUV	112.3490, -15.9481, 28.6349
Hunter-Lab	40.1269, 9.2990, 13.6749

Details

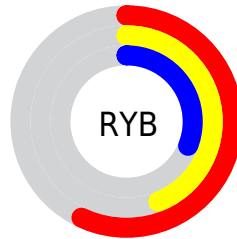
The XYZ color **17.8764, 16.1017, 9.7552** is a dark color, and the websafe version is hex **996666**. A complement of this color would be **15.5017, 17.9150, 29.4289**, and the grayscale version is **15.5428, 16.3522, 17.8076**.

A 20% lighter version of the original color is **39.4411, 36.7850, 25.7903**, and **6.0832, 5.1290, 2.2595** is the 20% darker color. If you saturate the color by 10%, you get **16.5087, 14.1332, 6.9354**, and if you desaturate by 10%, it is **19.4696, 18.3362, 13.2210**.

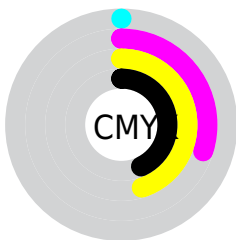
Distribution



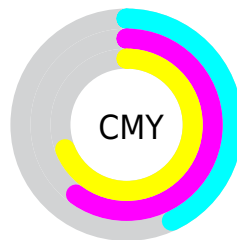
- Red (57%)
- Green (40%)
- Blue (31%)



- Red (57%)
- Yellow (44%)
- Blue (31%)



- Cyan (0%)
- Magenta (30%)
- Yellow (45%)
- Black (43%)



- Cyan (43%)
- Magenta (60%)
- Yellow (69%)

Brightness & Saturation Gradients

These gradients show how the XYZ color 17.8764, 16.1017, 9.7552 changes by changing the brightness by 10 percent. The first figure shows a shift by +10% for each color and the second figure -10%.

Similar to the brightness gradients but the following saturation gradients show a change of the XYZ color 17.8764, 16.1017, 9.7552 by changing the saturation by 10% instead.

■ 17.8764, 16.1017,
9.7552

■ 17.8764, 16.1017,
9.7552

233.2325,
229.9411, 199.3368

■ 10.9604, 9.5961,
5.1335

■ 39.3583, 36.7747,
25.9346

■ 6.1073, 5.1320,
2.2657

■ 54.6550, 51.7109,
38.3294

■ 2.9517, 2.3249,
0.7119

■ 73.4760, 70.2261,
54.1522

■ 1.1283, 0.7869,
0.0000

■ 96.1866, 92.7047,
73.8217

■ 0.0486, 0.0000,
0.0000

■ 123.1522,
119.5311, 97.7564

■ 0.0000, 0.0000,
0.0000

154.7382,

151.0897, 126.3747

191.3098,
187.7649, 160.0954

■ 17.8764, 16.1017,
9.7552

■ 17.8764, 16.1017,
9.7552

■ 16.5087, 14.1332,
6.9354

■ 19.4696, 18.3362,
13.2210

■ 15.3542, 12.4179,
4.7197

■ 21.2975, 20.8442,
17.3691

■ 14.4008, 10.9455,
3.0632

■ 23.3702, 23.6356,
22.2342

■ 13.6349, 9.7038,
1.9135

■ 25.6968, 26.7193,
27.8481

■ 13.0394, 8.6788,
1.2033

■ 28.2859, 30.1037,
34.2411

■ 12.7789, 8.2234,
0.9138

■ 31.1457, 33.7968,
41.4416

■ 34.2839, 37.8064,
49.4765

■ 37.7082, 42.1399,
58.3715

■ 41.4257, 46.8046,
68.1513

Harmonies

Analogous

The Analogous color harmony consists of three colors that are next to each other on the color wheel.



19.3609, 16.1017, 13.3302



17.8764, 16.1017, 9.7552



15.7927, 16.1017, 8.3148

Triad

The Triadic color harmony groups three colors that are evenly spaced from another and form a triangle on the color wheel.



17.8764, 16.1017, 9.7552



11.6066, 16.1017, 16.1838



16.9638, 16.1017, 30.5858

Complementary

The Complementary color scheme is a pair of colors which are on the opposite of each other on the color wheel.



17.8764, 16.1017, 9.7552



15.5017, 17.9150, 29.4289

Split Complementary

Split-complementary colors differ from the complementary color scheme. The scheme consists of three colors, the original color and two neighbors of the complement color.



14.8259, 16.1017, 31.8478



17.8764, 16.1017, 9.7552



11.8579, 16.1017, 22.5352

Square

The Square scheme is like the rectangle color scheme, but the four colors are evenly spaced on the color wheel.



17.8764, 16.1017, 9.7552



12.2703, 16.1017, 11.4309



12.9914, 16.1017, 28.6231



18.8009, 16.1017, 25.4904

Rectangle

The Rectangle color scheme consists of four colors that form a rectangle on the color wheel.



17.8764, 16.1017, 9.7552



14.3942, 16.1017, 8.4523



12.9914, 16.1017, 28.6231



16.2517, 16.1017, 31.5143

Sweetspot

The Sweet Spot groups the original color and five complimentary colors.



17.8768, 16.1025, 9.7555



42.4708, 43.1524, 41.2928



18.1418, 13.1956, 20.4394



9.2713, 9.3638, 8.7644



69.3244, 72.9347, 79.4259



10.7221, 11.2805, 12.2844

Same Dimension

The Same Dimension uses a secret algorithm to generate beautiful new colors.



17.8768, 16.1025, 9.7555



29.4975, 25.2122, 12.2862



21.6732, 23.6952, 11.0210



5.5488, 5.7039, 5.6979



10.9831, 7.0979, 0.7912



0.1239, 0.1056, 0.0139

Inverse Universe

The Inverse Universe completely reimagines the original color for something new.



15.5017, 17.9150, 29.4289



24.6544, 28.8571, 52.2441



12.1461, 11.2037, 28.3103



5.4086, 5.8130, 6.8657



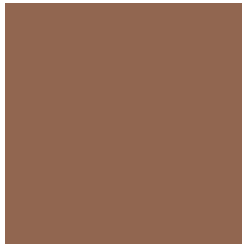
7.9895, 8.9650, 24.2864



0.0968, 0.1266, 0.2390

Previews

White Background



This preview shows how the XYZ color 17.8764, 16.1017, 9.7552 looks on a white background.

Color Contrast Check

Large Text (above 18pt) WCAG AA ✓ Pass

Any Text WCAG AA ✓ Pass

Large Text (above 18pt) WCAG AAA ✓ Pass

Any Text WCAG AAA × Fail

Black Background



This preview shows how the XYZ color 17.8764, 16.1017, 9.7552 looks on a black background.

Color Contrast Check

Large Text (above 18pt) WCAG AA ✓ Pass

Any Text WCAG AA × Fail

Large Text (above 18pt) WCAG AAA × Fail

Any Text WCAG AAA × Fail

If you want to check with other color combinations, try the [Color Contrast Checker](#).

XYZ 17.8764, 16.1017, 9.7552

Background



This preview shows how black text looks on a background with the XYZ color 17.8764, 16.1017, 9.7552.



This preview shows how white text looks on a background with the XYZ color 17.8764, 16.1017,

Color Blindness Simulation

Color vision deficiency is a very complex topic, and I could not describe the different causes any better than Wikipedia does, so if you want to learn more, you should check out their [article about color blindness](#).

Dichromacy



Original Color

17.8764, 16.1017, 9.7552

Protanopia

15.1401, 16.2215, 10.7206

Deuteranopia

16.3418, 16.0664, 9.6370



Tritanopia

19.0018, 15.9790, 15.7184

Trichromacy



Original Color

17.8764, 16.1017, 9.7552

Protanomaly

15.9772, 16.0168, 10.4331

Deuteranomaly

16.7794, 15.9860, 9.5984

Tritanomaly

18.4736, 15.8977, 13.4042

Monochromacy



Original Color

17.8764, 16.1017, 9.7552

Achromatopsia

15.4009, 16.2029, 17.6450

Achromatomaly

15.9750, 15.9303, 14.2895

CSS Examples

Text

The CSS property to change the color of the text to XYZ 17.8764, 16.1017, 9.7552 is called "color". The color property can be set on classes, ids or directly on the HTML element.

This example shows how text in the color `rgb(145, 102, 80)` looks like.

```
.text, #text, p{  
    color:rgb(145, 102, 80)  
}
```

If you want to add a text shadow in that color use the text-shadow property, you can generate a text shadow directly with our [CSS Text Shadow Generator](#).

Here you see how black text with a 4 pixel rgb(145, 102, 80) colored shadow looks like.

```
.shadow{ text-shadow: 4px 4px 2px rgb(145, 102, 80) }
```

Border

The CSS property to change the border of an element to XYZ 17.8764, 16.1017, 9.7552 is called "border". The border property can be set on classes, ids or directly on the HTML element.

This example shows the color as border, it can be applied via the CSS property "border" or "border-color".

```
.border, #border, table{ border:4px solid rgb(145, 102, 80) }
```


If only the border color should be changed use the property `border-color`.

```
.border{ border-color:rgb(145, 102, 80) }
```

If you want to add a box shadow in that color use:

Here you see how a box with a 4 pixel `rgb(145, 102, 80)` colored shadow looks like.

```
.boxshadow{ -moz-box-shadow:4px 4px 4px  
4px rgb(145, 102, 80); -webkit-box-  
shadow:4px 4px 4px 4px rgb(145, 102, 80);  
box-shadow:4px 4px 4px 4px rgb(145, 102,  
80) }
```

Background

The CSS property to change the background color of an element to XYZ 17.8764, 16.1017, 9.7552 is called "background". The background property can be set on classes, ids or directly on the HTML element.

```
.background, #background, body{  
background: rgb(145, 102, 80) }
```

If only the background color should be changed can be used:

```
.background{ background-color: rgb(145,  
102, 80) }
```

This example shows the color as background, it is applied via the CSS property "background".

To optimize and compress your CSS code, you can use our [online CSS compressor and optimizer](#) based on csstidy. If you want to create a linear or radial gradient as background or border, check our [CSS Gradient Generator](#).

Hey! You found this booklet interesting? Support Converting Colors with the new Membership Option!

The pro membership hides all ads, plus gives you double the colors in the color bucket, and more awesome pro features!

[Learn more, Memberships starting at \\$2.50/m!](#)

**Follow me
on Twitter!**

@ConvertingColor