

Converting Colors

XYZ(17.9662, 17.2062, 11.2930)

Have a look what the booklet for
XYZ(17.9662, 17.2062, 11.2930)
contains.

XYZ(18.0042, 17.2008, 11.3880)	3
<i>Conversions</i>	4
<i>Details</i>	6
<i>Harmonies</i>	12
<i>Previews</i>	24
<i>Color Blindness Simulation</i>	28
<i>CSS Examples</i>	31

Color

**XYZ(18.0042, 17.2008,
11.3880)**

Conversions

Conversions Part 1

Format	Color
Hex	8C6D57
RGB	140, 109, 87
RGB Percent	55%, 43%, 34%
CMY	0.4510, 0.5725, 0.6588
CMYK	0.00, 0.22, 0.38, 0.45
HSL	25°, 23%, 45%
HSV	25°, 38%, 55%
XYZ	18.0042, 17.2008, 11.3880
YIQ	115.7610, 25.5380, -0.2700

Conversions

Conversions Part 2

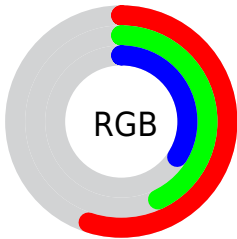
Format	Color
R_{YB}	140, 125, 87
Decimal	9203031
CIE Lab	48.51, 9.08, 17.00
CIE LCh	49, 19.273, 61.875
Yxy	17.2008, 0.3864, 0.3692
Android (android.graphics.Color)	4287393111 (0xFF8C6D57)
YUV	115.7610, -14.1792, 21.2576
Hunter-Lab	41.4738, 4.9094, 12.7517

Details

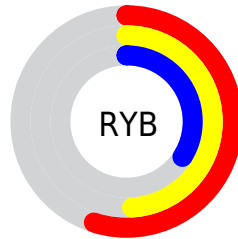
The XYZ color **18.0042, 17.2008, 11.3880** is a dark color, and the websafe version is hex **996666**. A complement of this color would be **15.1425, 16.8762, 27.2705**, and the grayscale version is **16.5642, 17.4268, 18.9778**.

A 20% lighter version of the original color is **39.7659, 38.8980, 29.0791**, and **6.0935, 5.5723, 2.8522** is the 20% darker color. If you saturate the color by 10%, you get **16.6537, 15.3281, 8.3844**, and if you desaturate by 10%, it is **19.5479, 19.2823, 15.0038**.

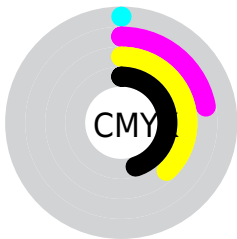
Distribution



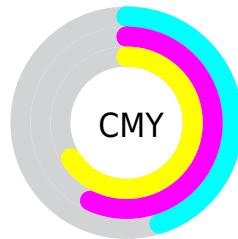
- Red (55%)
- Green (43%)
- Blue (34%)



- Red (55%)
- Yellow (49%)
- Blue (34%)



- Cyan (0%)
- Magenta (22%)
- Yellow (38%)
- Black (45%)



- Cyan (45%)
- Magenta (57%)
- Yellow (66%)

Brightness & Saturation Gradients

These gradients show how the XYZ color 18.0042, 17.2008, 11.3880 changes by changing the brightness by 10 percent. The first figure shows a shift by +10% for each color and the second figure -10%.

Similar to the brightness gradients but the following saturation gradients show a change of the XYZ color 18.0042, 17.2008, 11.3880 by changing the saturation by 10% instead.

■ 18.0042, 17.2008,
11.3880

■ 18.0042, 17.2008,
11.3880

233.9398,
236.3269, 211.1425

■ 11.0527, 10.3778,
6.2110

■ 39.5745, 38.6707,
29.0230

■ 6.1699, 5.6501,
2.9029

■ 54.9240, 54.0863,
42.3181

■ 2.9903, 2.6335,
1.0453

■ 73.8036, 73.1350,
59.1562

■ 1.1486, 0.9436,
0.0000

■ 96.5786, 96.2010,
79.9560

■ 0.0652, 0.0000,
0.0000

■ 123.6144,
123.6688, 105.1360

■ 0.0000, 0.0000,
0.0000

155.2763,

155.9228, 135.1148

191.9296,
193.3474, 170.3107

■ 18.0042, 17.2008,
11.3880

■ 18.0042, 17.2008,
11.3880

■ 16.6537, 15.3281,
8.3844

■ 19.5479, 19.2823,
15.0038

■ 15.4865, 13.6547,
5.9572

■ 21.2916, 21.5768,
19.2626

■ 14.4935, 12.1740,
4.0686

■ 23.2433, 24.0914,
24.1944

■ 13.6644, 10.8780,
2.6758

■ 25.4100, 26.8320,
29.8270

■ 12.9874, 9.7578,
1.7293

■ 27.7986, 29.8046,
36.1866

■ 12.4411, 8.8007,
1.1292

■ 30.4155, 33.0145,
43.2981

■ 12.3344, 8.6137,
1.0125

■ 33.2668, 36.4672,
51.1853

■ 36.3586, 40.1678,
59.8706

■ 39.6966, 44.1213,
69.3758

Harmonies

Analogous

The Analogous color harmony consists of three colors that are next to each other on the color wheel.



19.4088, 17.2008, 14.0438



18.0042, 17.2008, 11.3880



16.2379, 17.2008, 10.5863

Triad

The Triadic color harmony groups three colors that are evenly spaced from another and form a triangle on the color wheel.



18.0042, 17.2008, 11.3880



13.1812, 17.2008, 19.0491



18.2104, 17.2008, 28.2723

Complementary

The Complementary color scheme is a pair of colors which are on the opposite of each other on the color wheel.



18.0042, 17.2008, 11.3880



15.1425, 16.8762, 27.2705

Split Complementary

Split-complementary colors differ from the complementary color scheme. The scheme consists of three colors, the original color and two neighbors of the complement color.



16.4603, 17.2008, 30.2414



18.0042, 17.2008, 11.3880



13.6287, 17.2008, 24.3545

Square

The Square scheme is like the rectangle color scheme, but the four colors are evenly spaced on the color wheel.



18.0042, 17.2008, 11.3880



13.5304, 17.2008, 14.5041



14.7982, 17.2008, 28.6936



19.5338, 17.2008, 23.7030

Rectangle

The Rectangle color scheme consists of four colors that form a rectangle on the color wheel.



18.0042, 17.2008, 11.3880



15.1147, 17.2008, 11.0691



14.7982, 17.2008, 28.6936



17.6484, 17.2008, 29.2938

Sweetspot

The Sweet Spot groups the original color and five complimentary colors.



18.0046, 17.2016, 11.3883



39.7756, 40.9336, 39.5850



17.5414, 13.7192, 19.1136



9.0711, 9.3110, 8.8826



67.5393, 71.0566, 77.3807



10.1266, 10.6539, 11.6021

Same Dimension

The Same Dimension uses a secret algorithm to generate beautiful new colors.



18.0046, 17.2016, 11.3883



29.7900, 27.6265, 15.7120



21.1579, 23.5081, 12.4394



5.1923, 5.3675, 5.3148



10.9783, 7.6909, 0.9059



0.0868, 0.0789, 0.0106

Inverse Universe

The Inverse Universe completely reimagines the original color for something new.



15.1425, 16.8762, 27.2705



24.0237, 26.9618, 47.6809



12.5175, 11.6263, 26.3955



5.0017, 5.3463, 6.3742



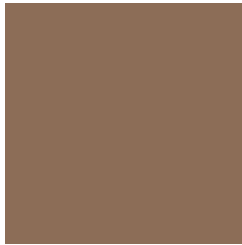
6.8987, 7.0678, 23.0463



0.0603, 0.0759, 0.1579

Previews

White Background



This preview shows how the XYZ color 18.0042, 17.2008, 11.3880 looks on a white background.

Color Contrast Check

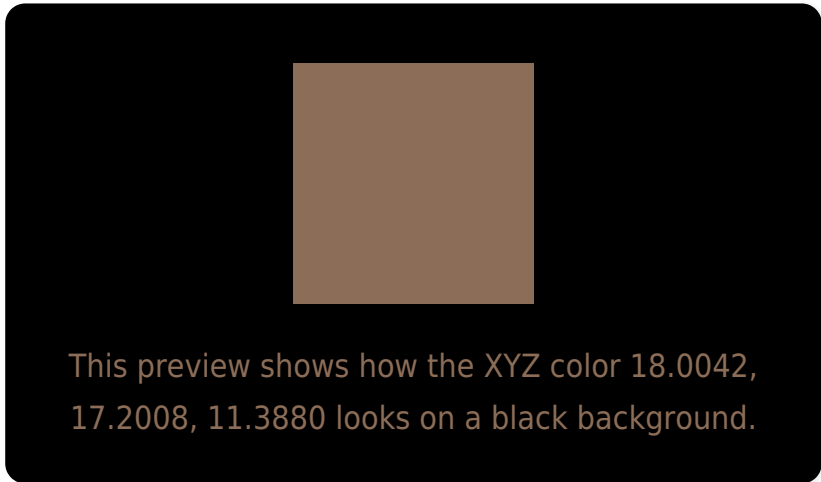
Large Text (above 18pt) WCAG AA ✓ Pass

Any Text WCAG AA ✓ Pass

Large Text (above 18pt) WCAG AAA ✓ Pass

Any Text WCAG AAA × Fail

Black Background



Color Contrast Check

Large Text (above 18pt) WCAG AA ✓ Pass

Any Text WCAG AA × Fail

Large Text (above 18pt) WCAG AAA × Fail

Any Text WCAG AAA × Fail

If you want to check with other color combinations, try the [Color Contrast Checker](#).

XYZ 18.0042, 17.2008, 11.3880

Background



This preview shows how black text looks on a background with the XYZ color 18.0042, 17.2008, 11.3880.



This preview shows how white text looks on a background with the XYZ color 18.0042, 17.2008,

Color Blindness Simulation

Color vision deficiency is a very complex topic, and I could not describe the different causes any better than Wikipedia does, so if you want to learn more, you should check out their [article about color blindness](#).

Dichromacy



Original Color

18.0042, 17.2008, 11.3880

Protanopia

16.1446, 17.2106, 12.1439

Deuteranopia

17.5581, 17.2912, 11.4290



Tritanopia

19.3599, 17.1350, 17.9098

Trichromacy



Original Color

18.0042, 17.2008, 11.3880

Protanomaly

16.7616, 17.1987, 11.8874

Deuteranomaly

17.6128, 17.1583, 11.4004

Tritanomaly

18.8081, 17.0583, 15.3980

Monochromacy



Original Color

18.0042, 17.2008, 11.3880

Achromatopsia

16.6002, 17.4647, 19.0191

Achromatomaly

16.9124, 17.1901, 15.7913

CSS Examples

Text

The CSS property to change the color of the text to XYZ 18.0042, 17.2008, 11.3880 is called "color". The color property can be set on classes, ids or directly on the HTML element.

This example shows how text in the color `rgb(140, 109, 87)` looks like.

```
.text, #text, p{  
    color:rgb(140, 109, 87)  
}
```

If you want to add a text shadow in that color use the text-shadow property, you can generate a text shadow directly with our [CSS Text Shadow Generator](#).

Here you see how black text with a 4 pixel rgb(140, 109, 87) colored shadow looks like.

```
.shadow{ text-shadow: 4px 4px 2px rgb(140, 109, 87) }
```

Border

The CSS property to change the border of an element to XYZ 18.0042, 17.2008, 11.3880 is called "border". The border property can be set on classes, ids or directly on the HTML element.

This example shows the color as border, it can be applied via the CSS property "border" or "border-color".

```
.border, #border, table{ border:4px solid rgb(140, 109, 87) }
```


If only the border color should be changed use the property `border-color`.

```
.border{ border-color:rgb(140, 109, 87) }
```

If you want to add a box shadow in that color use:

Here you see how a box with a 4 pixel `rgb(140, 109, 87)` colored shadow looks like.

```
.boxshadow{ -moz-box-shadow:4px 4px 4px  
4px rgb(140, 109, 87); -webkit-box-  
shadow:4px 4px 4px 4px rgb(140, 109, 87);  
box-shadow:4px 4px 4px 4px rgb(140, 109,  
87) }
```

Background

The CSS property to change the background color of an element to XYZ 18.0042, 17.2008, 11.3880 is called "background". The background property can be set on classes, ids or directly on the HTML element.

```
.background, #background, body{  
background: rgb(140, 109, 87) }
```

If only the background color should be changed can be used:

```
.background{ background-color: rgb(140,  
109, 87) }
```

This example shows the color as background, it is applied via the CSS property "background".

To optimize and compress your CSS code, you can use our [online CSS compressor and optimizer](#) based on csstidy. If you want to create a linear or radial gradient as background or border, check our [CSS Gradient Generator](#).

Hey! You found this booklet interesting? Support Converting Colors with the new Membership Option!

The pro membership hides all ads, plus gives you double the colors in the color bucket, and more awesome pro features!

[Learn more, Memberships starting at \\$2.50/m!](#)

**Follow me
on Twitter!**

@ConvertingColor