

Converting Colors

XYZ(18.5590, 17.7033, 12.4948)

Have a look what the booklet for
XYZ(18.5590, 17.7033, 12.4948)
contains.

XYZ(18.6007, 17.8043, 12.5814)	3
<i>Conversions</i>	4
<i>Details</i>	6
<i>Harmonies</i>	12
<i>Previews</i>	24
<i>Color Blindness Simulation</i>	28
<i>CSS Examples</i>	31

Color

**XYZ(18.6007, 17.8043,
12.5814)**

Conversions

Conversions Part 1

Format	Color
Hex	8D6F5C
RGB	141, 111, 92
RGB Percent	55%, 44%, 36%
CMY	0.4471, 0.5647, 0.6392
CMYK	0.00, 0.21, 0.35, 0.45
HSL	23°, 21%, 46%
HSV	23°, 35%, 55%
XYZ	18.6007, 17.8043, 12.5814
YIQ	117.8040, 23.9790, 0.4510

Conversions

Conversions Part 2

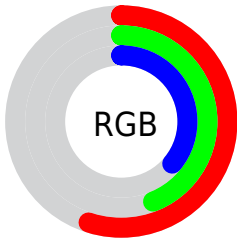
Format	Color
R_{YB}	141, 123, 92
Decimal	9269084
CIE _{Lab}	49.26, 9.01, 15.10
CIE _{LCh}	49, 17.582, 59.184
Yxy	17.8043, 0.3797, 0.3635
Android (android.graphics.Color)	4287459164 (0xFF8D6F5C)
YUV	117.8040, -12.7214, 20.3429
Hunter-Lab	42.1951, 4.8459, 11.8580

Details

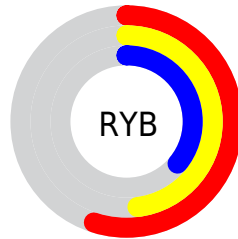
The XYZ color **18.6007, 17.8043, 12.5814** is a dark color, and the websafe version is hex **996666**. A complement of this color would be **16.1806, 18.1168, 27.8434**, and the grayscale version is **17.1922, 18.0876, 19.6973**.

A 20% lighter version of the original color is **40.7446, 39.8831, 31.1419**, and **6.4871, 5.9259, 3.3867** is the 20% darker color. If you saturate the color by 10%, you get **17.1441, 15.7874, 9.3328**, and if you desaturate by 10%, it is **20.2640, 20.0508, 16.4654**.

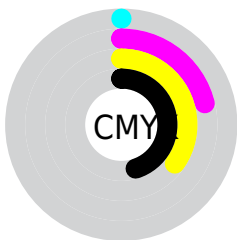
Distribution



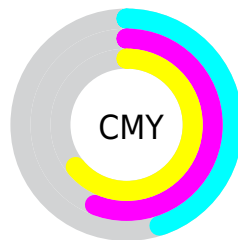
- Red (55%)
- Green (44%)
- Blue (36%)



- Red (55%)
- Yellow (48%)
- Blue (36%)



- Cyan (0%)
- Magenta (21%)
- Yellow (35%)
- Black (45%)



- Cyan (45%)
- Magenta (56%)
- Yellow (64%)

Brightness & Saturation Gradients

These gradients show how the XYZ color 18.6007, 17.8043, 12.5814 changes by changing the brightness by 10 percent. The first figure shows a shift by +10% for each color and the second figure -10%.

Similar to the brightness gradients but the following saturation gradients show a change of the XYZ color 18.6007, 17.8043, 12.5814 by changing the saturation by 10% instead.

■ 18.6007, 17.8043,
12.5814

■ 18.6007, 17.8043,
12.5814

237.2161,
239.7657, 219.3300

■ 11.4844, 10.8096,
7.0136

■ 40.5804, 39.7036,
31.2298

■ 6.4633, 5.9389,
3.3920

■ 56.1745, 55.3769,
45.1474

■ 3.1721, 2.8080,
1.2981

■ 75.3252, 74.7119,
62.6854

■ 1.2454, 1.0323,
0.0603

■ 98.3980, 98.0930,
84.2624

■ 0.1418, 0.0000,
0.0000

125.7581,
125.9045, 110.2967

■ 0.0000, 0.0000,
0.0000

157.7709,

158.5308, 141.2071

194.8018,
196.3564, 177.4120

■ 18.6007, 17.8043,
12.5814

■ 18.6007, 17.8043,
12.5814

■ 17.1441, 15.7874,
9.3328

■ 20.2640, 20.0508,
16.4654

■ 15.8839, 13.9899,
6.6840

■ 22.1410, 22.5318,
21.0154

■ 14.8108, 12.4045,
4.5976

■ 24.2399, 25.2550,
26.2616

■ 13.9143, 11.0225,
3.0315

■ 26.5683, 28.2269,
32.2317

■ 13.1823, 9.8343,
1.9375

■ 29.1332, 31.4541,
38.9521

■ 12.6000, 8.8288,
1.2526

■ 31.9413, 34.9425,
46.4478

■ 12.3357, 8.3650,
0.9645

■ 34.9991, 38.6981,
54.7427

■ 38.3128, 42.7267,
63.8595

■ 41.8885, 47.0337,
73.8201

Harmonies

Analogous

The Analogous color harmony consists of three colors that are next to each other on the color wheel.



19.8469, 17.8043, 15.2834



18.6007, 17.8043, 12.5814



16.9677, 17.8043, 11.6446

Triad

The Triadic color harmony groups three colors that are evenly spaced from another and form a triangle on the color wheel.



18.6007, 17.8043, 12.5814



13.9436, 17.8043, 19.2567



18.5175, 17.8043, 28.4521

Complementary

The Complementary color scheme is a pair of colors which are on the opposite of each other on the color wheel.



18.6007, 17.8043, 12.5814



16.1806, 18.1168, 27.8434

Split Complementary

Split-complementary colors differ from the complementary color scheme. The scheme consists of three colors, the original color and two neighbors of the complement color.



16.8773, 17.8043, 29.9670



18.6007, 17.8043, 12.5814



14.3004, 17.8043, 24.1637

Square

The Square scheme is like the rectangle color scheme, but the four colors are evenly spaced on the color wheel.



18.6007, 17.8043, 12.5814



14.3408, 17.8043, 15.0929



15.3483, 17.8043, 28.2853



19.7967, 17.8043, 24.4242

Rectangle

The Rectangle color scheme consists of four colors that form a rectangle on the color wheel.



18.6007, 17.8043, 12.5814



15.9010, 17.8043, 12.0069



15.3483, 17.8043, 28.2853



17.9868, 17.8043, 29.2985

Sweetspot

The Sweet Spot groups the original color and five complimentary colors.



18.6012, 17.8051, 12.5818



41.3061, 42.5088, 41.7399



18.3380, 14.7277, 20.3591



9.1237, 9.3617, 9.0683



67.5393, 71.0566, 77.3807



10.1266, 10.6539, 11.6021

Same Dimension

The Same Dimension uses a secret algorithm to generate beautiful new colors.



18.6012, 17.8051, 12.5818



31.1581, 28.9112, 17.7073



21.6199, 23.8426, 13.5880



5.5697, 5.7457, 5.7048



11.2624, 7.6564, 0.8842



0.1280, 0.1138, 0.0152

Inverse Universe

The Inverse Universe completely reimagines the original color for something new.



16.1806, 18.1168, 27.8434



26.1171, 29.5486, 49.4548



13.5627, 12.8810, 26.9708



5.3870, 5.7698, 6.8585



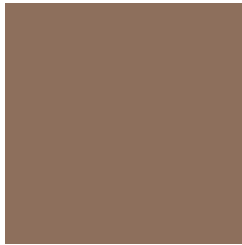
7.4569, 7.8997, 24.1089



0.0927, 0.1184, 0.2376

Previews

White Background



This preview shows how the XYZ color 18.6007, 17.8043, 12.5814 looks on a white background.

Color Contrast Check

Large Text (above 18pt) WCAG AA ✓ Pass

Any Text WCAG AA ✓ Pass

Large Text (above 18pt) WCAG AAA ✓ Pass

Any Text WCAG AAA × Fail

Black Background



This preview shows how the XYZ color 18.6007, 17.8043, 12.5814 looks on a black background.

Color Contrast Check

Large Text (above 18pt) WCAG AA ✓ Pass

Any Text WCAG AA ✓ Pass

Large Text (above 18pt) WCAG AAA ✓ Pass

Any Text WCAG AAA × Fail

If you want to check with other color combinations, try the [Color Contrast Checker](#).

XYZ 18.6007, 17.8043, 12.5814

Background



This preview shows how black text looks on a background with the XYZ color 18.6007, 17.8043, 12.5814.



This preview shows how white text looks on a background with the XYZ color 18.6007, 17.8043,

Color Blindness Simulation

Color vision deficiency is a very complex topic, and I could not describe the different causes any better than Wikipedia does, so if you want to learn more, you should check out their [article about color blindness](#).

Dichromacy



Original Color

18.6007, 17.8043, 12.5814

Protanopia

16.7390, 17.8339, 13.3865

Deuteranopia

18.1534, 17.9013, 12.6237



Tritanopia

19.8426, 17.8257, 18.9179

Trichromacy



Original Color

18.6007, 17.8043, 12.5814

Protanomaly

17.3570, 17.8154, 13.1136

Deuteranomaly

18.2072, 17.7643, 12.5944

Tritanomaly

19.2778, 17.7496, 16.3199

Monochromacy



Original Color

18.6007, 17.8043, 12.5814

Achromatopsia

17.2197, 18.1164, 19.7288

Achromatomaly

17.4952, 17.8012, 16.9819

CSS Examples

Text

The CSS property to change the color of the text to XYZ 18.6007, 17.8043, 12.5814 is called "color". The color property can be set on classes, ids or directly on the HTML element.

This example shows how text in the color `rgb(141, 111, 92)` looks like.

```
.text, #text, p{  
    color:rgb(141, 111, 92)  
}
```

If you want to add a text shadow in that color use the text-shadow property, you can generate a text shadow directly with our [CSS Text Shadow Generator](#).

Here you see how black text with a 4 pixel rgb(141, 111, 92) colored shadow looks like.

```
.shadow{ text-shadow: 4px 4px 2px rgb(141, 111, 92) }
```

Border

The CSS property to change the border of an element to XYZ 18.6007, 17.8043, 12.5814 is called "border". The border property can be set on classes, ids or directly on the HTML element.

This example shows the color as border, it can be applied via the CSS property "border" or "border-color".

```
.border, #border, table{ border:4px solid rgb(141, 111, 92) }
```


If only the border color should be changed use the property `border-color`.

```
.border{ border-color:rgb(141, 111, 92) }
```

If you want to add a box shadow in that color use:

Here you see how a box with a 4 pixel `rgb(141, 111, 92)` colored shadow looks like.

```
.boxshadow{ -moz-box-shadow:4px 4px 4px  
4px rgb(141, 111, 92); -webkit-box-  
shadow:4px 4px 4px 4px rgb(141, 111, 92);  
box-shadow:4px 4px 4px 4px rgb(141, 111,  
92) }
```

Background

The CSS property to change the background color of an element to XYZ 18.6007, 17.8043, 12.5814 is called "background". The background property can be set on classes, ids or directly on the HTML element.

```
.background, #background, body{  
background: rgb(141, 111, 92) }
```

If only the background color should be changed can be used:

```
.background{ background-color: rgb(141,  
111, 92) }
```

This example shows the color as background, it is applied via the CSS property "background".

To optimize and compress your CSS code, you can use our [online CSS compressor and optimizer](#) based on csstidy. If you want to create a linear or radial gradient as background or border, check our [CSS Gradient Generator](#).

Hey! You found this booklet interesting? Support Converting Colors with the new Membership Option!

The pro membership hides all ads, plus gives you double the colors in the color bucket, and more awesome pro features!

[Learn more, Memberships starting at \\$2.50/m!](#)

**Follow me
on Twitter!**

@ConvertingColor